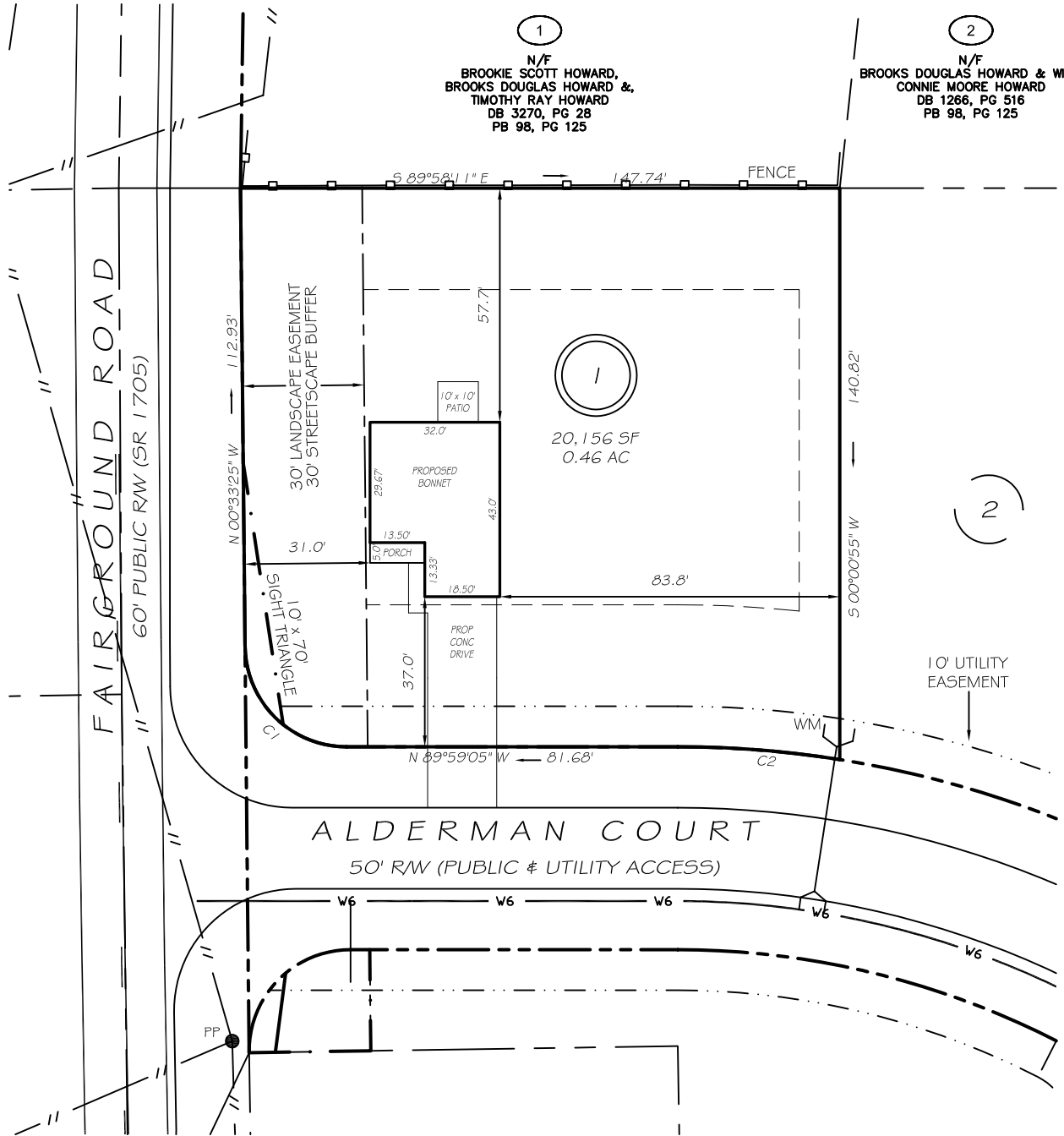


I, MICHAEL P. GRIFFIN, certify that under my direction and supervision this map was drawn from an actual field survey; that the error of closure of the survey as calculated by coordinates is 1: 10,000+; that the area shown hereon was calculated by coordinates.

Witness my hand and seal this day of MONTH 2024.

BK 2023 PAGE 561
HARNETT CO. REGISTRY



C1 R=25.00' L=39.02' S45°16'15"E 35.18'
C2 R=255.00' L=40.10' S85°28'48"E 40.06'

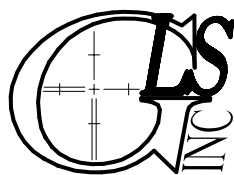
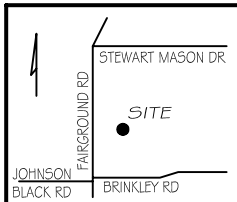
REVISION: MOVE LEFT 7/22/24
REVISION: MOVE RIGHT 6/21/24

ZONING: RA-20M
SETBACKS
FRONT 35'
REAR 25'
SIDE 10'
CORNER SIDE 20'

PRELIMINARY
NOT FOR RECORDATION,
SALES OR CONVEYANCE

LEGEND

EIP	EXISTING IRON PIPE	FES	FLARED END SECTION
IPS	IRON PIPE SET	WM	WATER METER
R/W	RIGHT OF WAY	CO	CLEAN OUT
N/F	NOW OR FORMERLY	FH	FIRE HYDRANT
EIS	EXISTING IRON STAKE	CB	CATCH BASIN



GRIFFIN LAND SURVEYING, INC.

P.O. BOX 148
FUQUAY-VARINA, NC 27526
(919) - 567 - 1963

PLOT PLAN
FOR
BEN STOUT
CONSTRUCTION
FAIRGROUND FARMS
LOT 1
ALDERMAN COURT
DUNN, N.C.
HARNETT COUNTY AVERASBORO TOWNSHIP

DRAWN BY **KDF**

DATE **5/22/24**

CHECKED BY **MPG**

SCALE **1" = 40'**