

I, MICHAEL P. GRIFFIN, certify that under my direction and supervision this map was drawn from an actual field survey; that the error of closure of the survey as calculated by coordinates is 1: 10,000+; that the area shown hereon was calculated by coordinates.

Witness my hand and seal this day of MONTH 2023.

HARNETT CO. REGISTRY
 BM 2023 PGS 14-15, 306-307

VICKIE WEAVER
 KAREN KELLY
 PIN #0528-49-2134.000
 D.B. 2417 PG. 851

TONY A. BROWN
 PIN #0529-81-5050.000
 D.B. 1519 PG. 720

DAVID & VIRGINIA SPAHR
 PIN #0528-69-9115.000
 D.B. 2420 PG. 218
 M.P. #2003-853

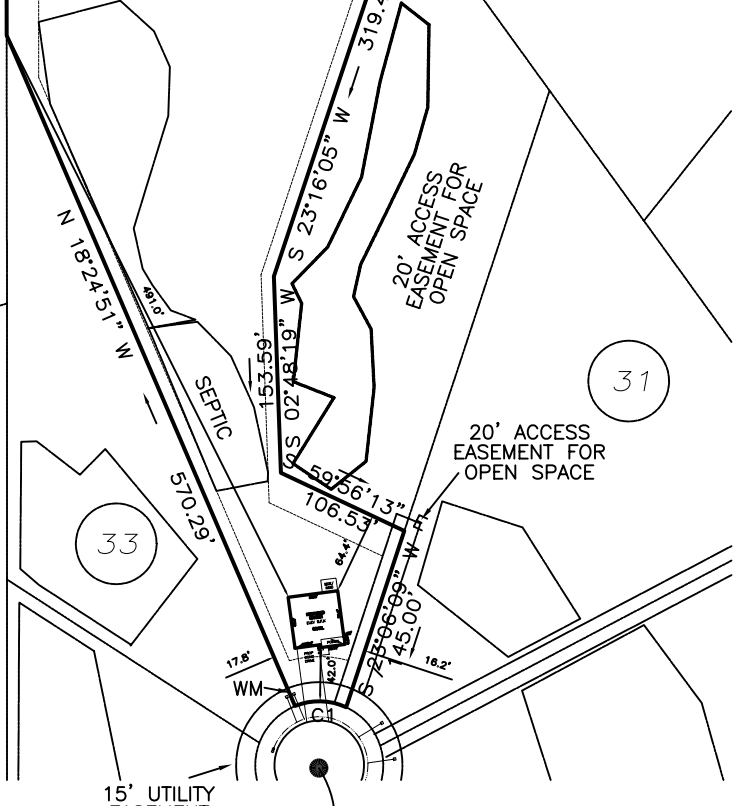
RYAN & MELINDA MARTIN
 PIN #0528-58-3533.000
 D.B. 3973 PG. 159

N 04°46'46" E — 543.28'

S 31°04'02" E — 529.11'

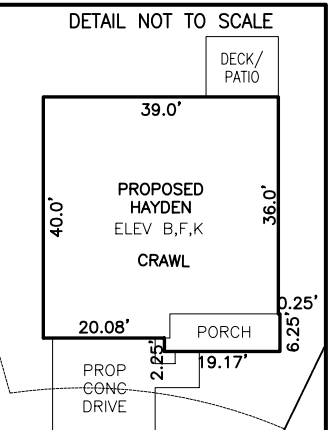
32
 3.896 AC.

31



REVISION: MOVE BACK 1/11/24

THERESA McNEILL
 LASHONE GREEN
 PIN #0528-57-4887.000
 D.B. 2664 PG. 314



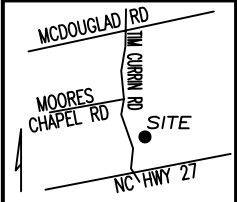
SETBACKS

FRONT	35'
REAR	25'
SIDE	10'
CORNER SIDE	20'

HAWKSMOORE LANE
 50' PUBLIC R/W & UTILITY

C1 R=50.00' L=41.15' N83°46'55"W 40.00'
LEGEND

EIP	EXISTING IRON PIPE	FES	FLARED END SECTION
IPS	IRON PIPE SET	WM	WATER METER
R/W	RIGHT OF WAY	CO	CLEAN OUT
N/F	NOW OR FORMERLY	FH	FIRE HYDRANT
EIS	EXISTING IRON STAKE	CB	CATCH BASIN



PRELIMINARY
 NOT FOR RECORDATION,
 SALES OR CONVEYANCE

GLS INC GRIFFIN LAND SURVEYING, INC.
 P.O. BOX 148
 FUQUAY-VARINA, NC 27526
 (919) - 567 - 1963

PLOT PLAN
 FOR
D.R. HORTON
 MCKAY PLACE
 LOT 32
 HAWKSMOORE LANE
 LILLINGTON, N.C.
 HARNETT COUNTY UPPER LITTLE RIVER TOWNSHIP

DRAWN BY KDF	DATE 9/29/23
CHECKED BY MPG	SCALE 1" = 150'