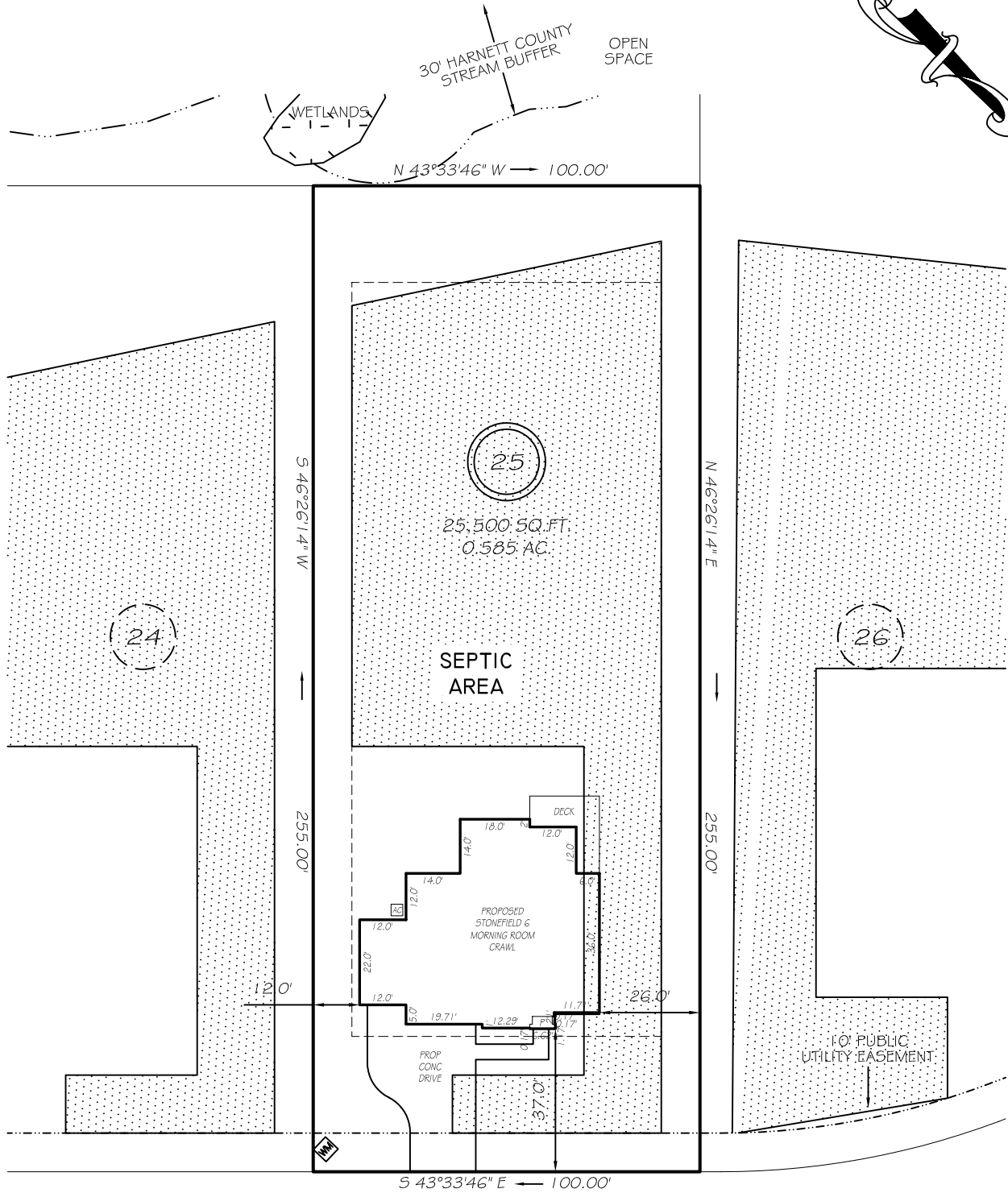


I, MICHAEL P. GRIFFIN, certify that under my direction and supervision this map was drawn from an actual field survey; that the error of closure of the survey as calculated by coordinates is 1: 10,000+; that the area shown hereon was calculated by coordinates.

Witness my hand and seal this day of MONTH 2024.

BM 2023 PAGE 248-249  
HARNETT CO. REGISTRY



IMPERVIOUS AREAS ADAMS POINTE COURT

HOUSE	2600 SQ. FT.
DRIVE & WALKS	999 SQ. FT.
AVC PAD	9 SQ. FT.
<b>TOTAL</b>	<b>3608 SQ. FT.</b>
<b>ALLOWED</b>	<b>4130 SQ. FT.</b>

50' PUBLIC R/W & UTILITY

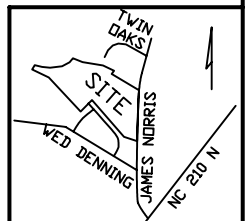
ZONING RA-30  
SETBACKS

FRONT	35'
REAR	25'
SIDE	10'
CORNER SIDE	20'

**P R E L I M I N A R Y**  
NOT FOR RECORDATION,  
SALES OR CONVEYANCE

LEGEND

EIP	EXISTING IRON PIPE	FES	FLARED END SECTION
IPS	IRON PIPE SET	WM	WATER METER
R/W	RIGHT OF WAY	CO	CLEAN OUT
N/F	NOW OR FORMERLY	FH	FIRE HYDRANT
EIS	EXISTING IRON STAKE	CB	CATCH BASIN



GRIFFIN LAND SURVEYING, INC.

P.O. BOX 148  
FUQUAY-VARINA, NC 27526  
(919) - 567 - 1963

PLOT PLAN  
FOR

**DRB HOMES**

HONEYCUTT HILLS

LOT 25

ADAMS POINTE COURT

ANGIER, N.C.

HARNETT COUNTY BLACK RIVER TOWNSHIP

DRAWN BY KDF

DATE 4/15/24

CHECKED BY MPG

SCALE 1" = 40'