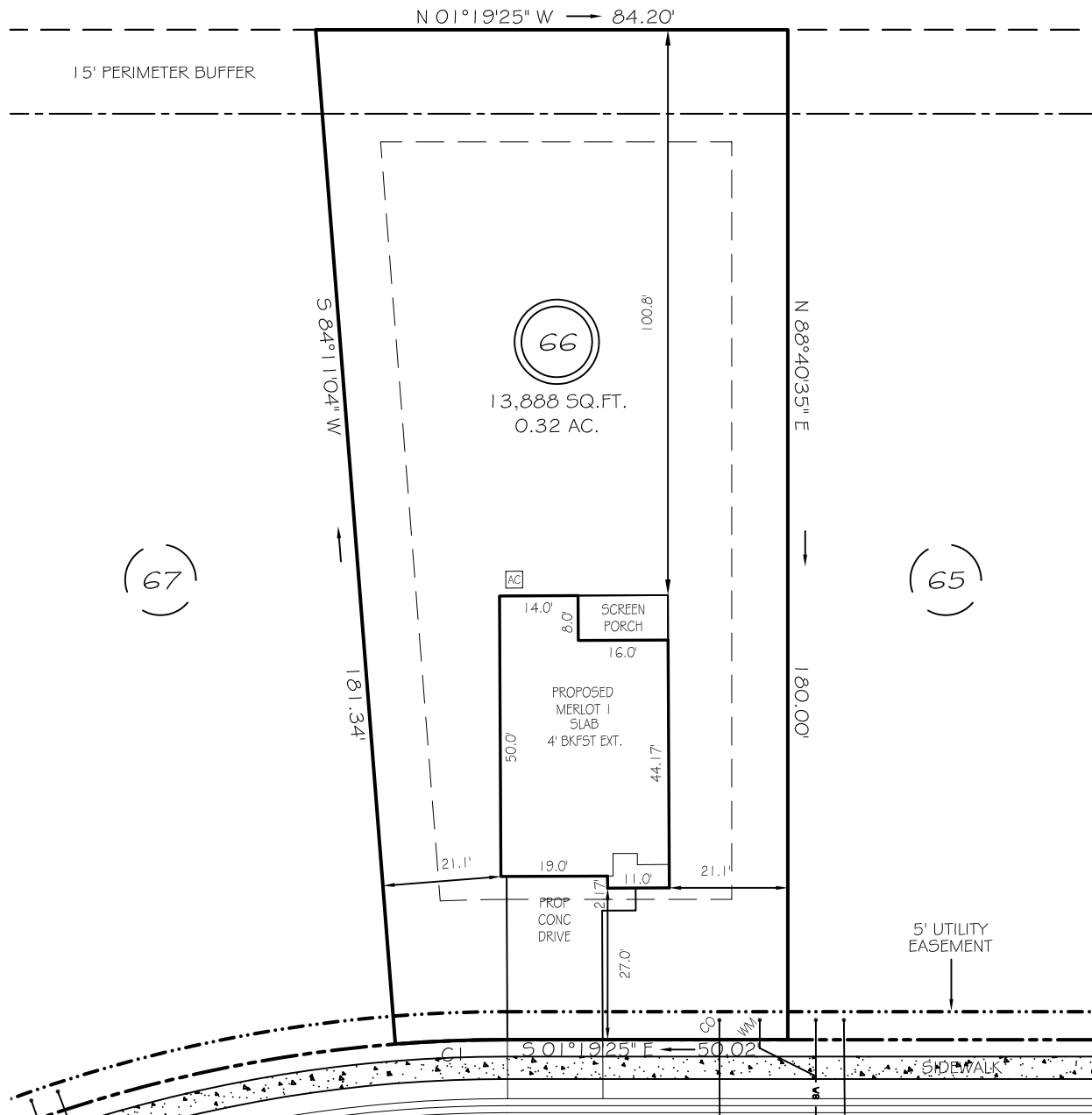


I, MICHAEL P. GRIFFIN, certify that under my direction and supervision this map was drawn from an actual field survey; that the error of closure of the survey as calculated by coordinates is 1: 10,000+; that the area shown hereon was calculated by coordinates.

Witness my hand and seal this day of MONTH 2024.

BK 2023 PG5 658-660
HARNETT CO. REGISTRY

N / F
TRAVIS WESTER
ESTATE 92E, PG 105
DB 304, PG 30
PB 2021, PG 41



WINDING CREEK DRIVE

IMPERVIOUS AREAS

50' PUBLIC RW & UTILITY ACCESS

SETBACKS

HOUSE	1396 SQ. FT.
DRIVE & WALKS	521 SQ. FT.
SCREEN PORCH	128 SQ. FT.
A/C PAD	9 SQ. FT.

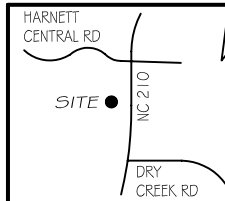
FRONT	25'
REAR	20'
SIDE	10'
CORNER SIDE	20'

TOTAL	2054 SQ. FT.
ALLOWED	3800 SQ. FT.

CI R=255.00' L=19.99' S03°34'11"E 19.99'

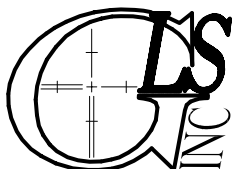
LEGEND

EIP	EXISTING IRON PIPE	FES	FLARED END SECTION
IPS	IRON PIPE SET	WM	WATER METER
RAW	RIGHT OF WAY	CO	CLEAN OUT
N/F	NOW OR FORMERLY	FH	FIRE HYDRANT
EIS	EXISTING IRON STAKE	CB	CATCH BASIN



PRELIMINARY

NOT FOR RECORDATION,
SALES OR CONVEYANCE



GRIFFIN LAND SURVEYING, INC.

P. O. BOX 148
FUQUAY-VARINA, NC 27526
(919) - 567-1963

PLOT PLAN

FOR

DRB HOMES

THE FARM AT
NEILLS CREEK

LOT 66

373 WINDING CREEK DRIVE

NORTH CAROLINA

HARNETT COUNTY NEILL'S CREEK TWSHP

DRAWN BY KDF

DATE 5/7/24

CHECKED BY MPG

SCALE 1" = 30'