

SOUTHEASTERN SOIL & ENVIRONMENTAL ASSOC., INC.

PROPOSED SUBSURFACE WASTE DISPOSAL SYSTEM DETAIL SHEET

SUBDIVISION: BLAKE POND

LOT 93

INITIAL SYSTEM: ^{pump to} APPROVED 25% REDUCTION

REPAIR: ^{pump to} APPROVED 25% REDUCTION

DISTRIBUTION: SERIAL

DISTRIBUTION SERIAL

BENCHMARK: 100.0

LOCATION PC 93/94

NO. BEDROOMS: 4

LTAR 0.3 GPD/FT²

SEPTIC TANK SIZE: 1000

PUMP TANK SIZE: 1000

<u>LINE</u>	<u>FLAG COLOR</u>	<u>ELEVATION</u>	<u>LENGTH</u>
1	G	98.25	65'
2	R	98.00	70'
3	G	97.84	70'
4	R	97.58	75'
5	G	97.42	80'
6A	R	97.25	40'
			<u>400'</u>
6B	R	97.25	45'
7	G	97.17	90'
8	R	97.08	90'
9	G	97.00	90'
10	R	96.84	90'
			<u>405'</u>

BY: M EAKER

DATE 12/2022

TYPICAL PROFILE

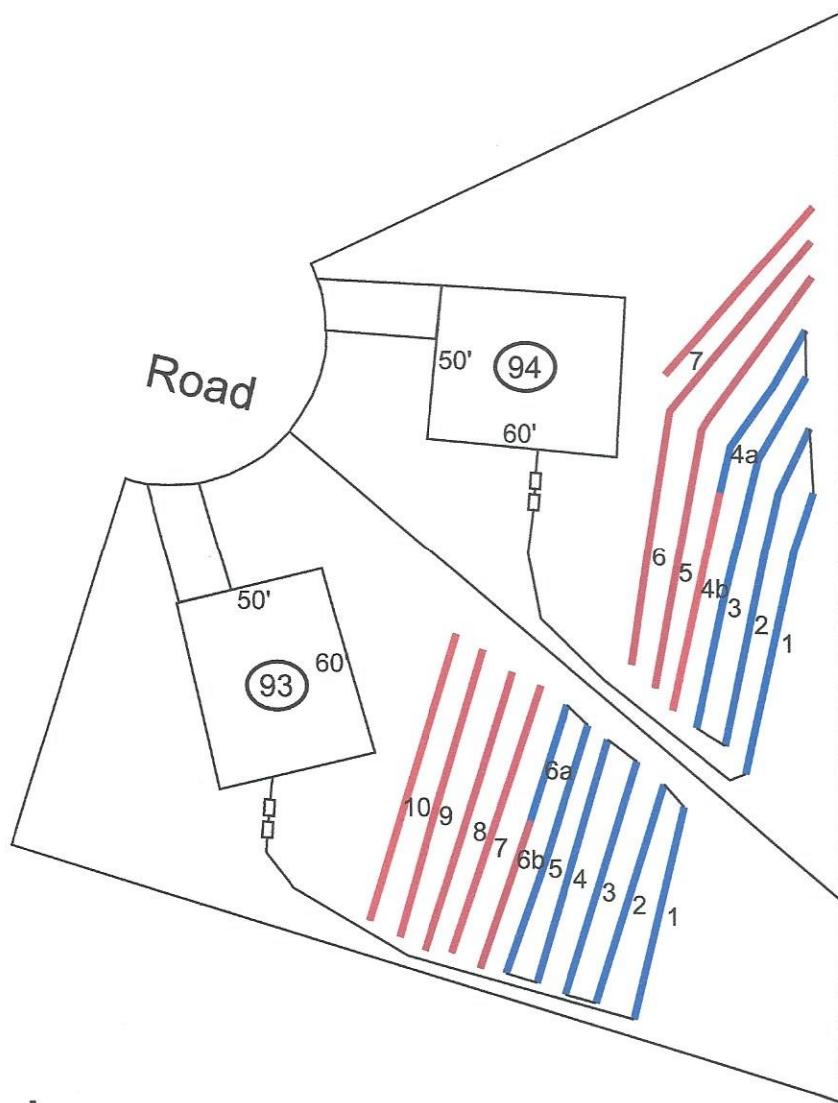
0-10 US (VF, un-)
10-48 SCL (F, shk)
CR 2 248"
INSTALL AT 18-24"

THERE SHALL BE NO GRADING,
CUTTING, LOGGING OR OTHER SOIL
DISTURBANCE IN SEPTIC AREA

HEALTH DEPARTMENT USE ONLY.
 DESIGNS DO NOT GUARANTEE FUNCTIONALITY

Southeastern Soil & Environmental Associates, Inc.

P.O. Box 9321
Fayetteville, NC 28311
Phone/Fax (910) 822-4540
Email mike@southeasternsoil.com



Scale
1:60