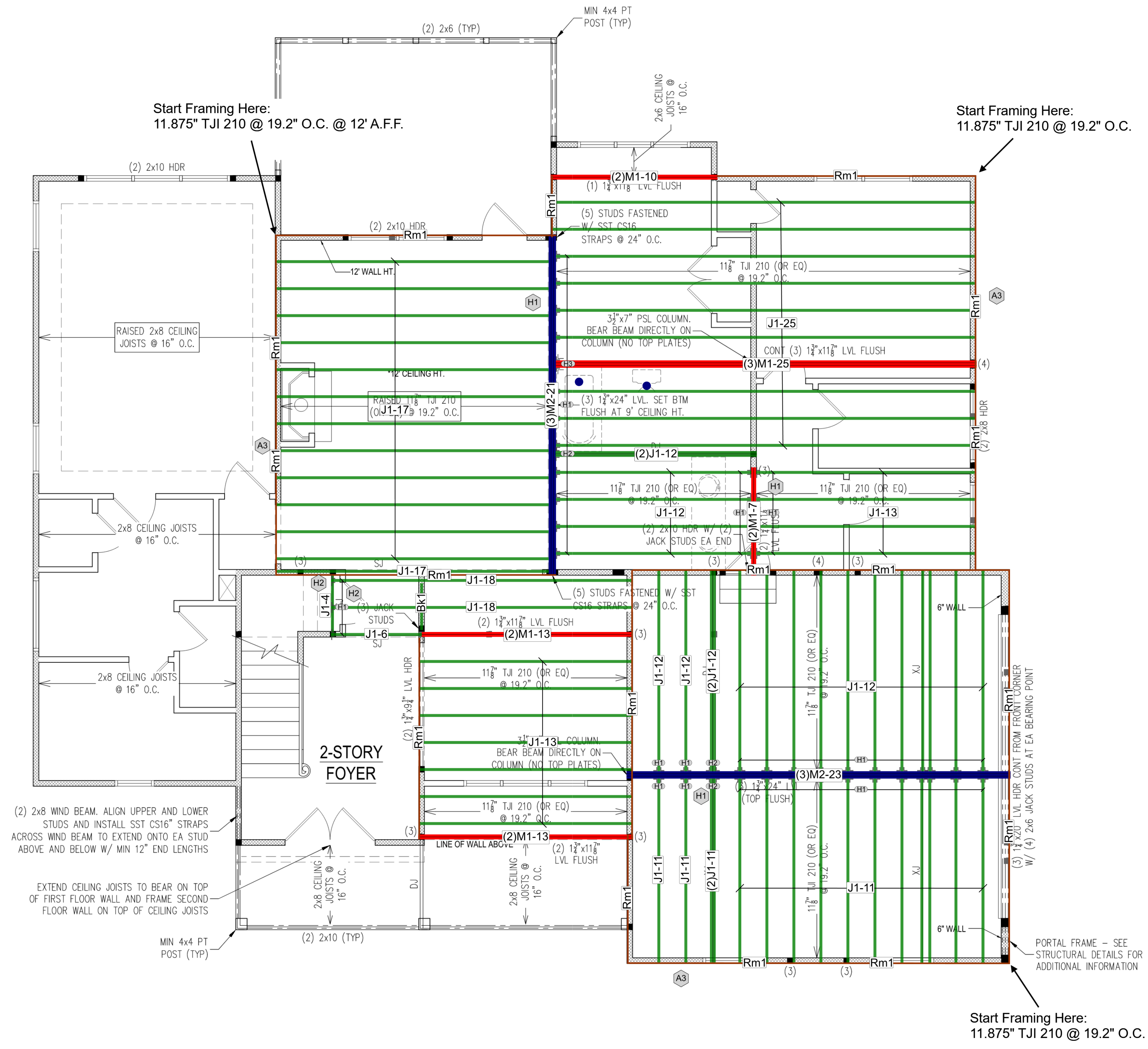


Tag	Qty	Product	Len	Cut Logic
Floor Joist				
J1	9	2-1/16"x11-7/8" TJI@ 210	26'9x(1/25)	
J1	15	2-1/16"x11-7/8" TJI@ 210	18'2x(1/18) 13x(1/17)	
J1	14	1-1/2"x11-7/8" TJI@ 210	14'11x(1/3)	
J1	36	2-1/16"x11-7/8" TJI@ 210	12'21x(1/12) 15x(1/11)	
J1	12	1-1/2"x11-7/8" TJI@ 210	6'1x(1/6)	
J1	12	1-1/2"x11-7/8" TJI@ 210	4'11x(1/4)	
Floor Joist Blocking				
Bx1	4	2-1/16"x11-7/8" TJI@ 210	R/L	
Beam				
M1	3	1-3/4"x11-7/8" Microllam@ LVL	26'3x(1/25)	
M1	5	1-3/4"x11-7/8" Microllam@ LVL	14'1x(2/7) 4x(1/13)	
M1	2	1-3/4"x11-7/8" Microllam@ LVL	10'2x(1/10)	
M2	3	1-3/4"x24" Microllam@ LVL	24'3x(1/23)	
M2	3	1-3/4"x24" Microllam@ LVL	22'3x(1/21)	
Rim				
Rm1	13	1-1/8"x11-7/8" TJI@ Rim Board	16'13/16	
Hanger				
H1	48	1/2" x 10d Simpson Strong Tie		
H2	3	MIL4 28/11 Simpson Strong Tie		
H3	1	HGUS5.50/12 Simpson Strong Tie		



Start Framing Here:
 11.875" TJI 210 @ 19.2" O.C. @ 12' A.F.F.

Start Framing Here:
 11.875" TJI 210 @ 19.2" O.C.

Start Framing Here:
 11.875" TJI 210 @ 19.2" O.C.

(2) 2x8 WIND BEAM. ALIGN UPPER AND LOWER STUDS AND INSTALL SST CS16™ STRAPS ACROSS WIND BEAM TO EXTEND ONTO EA STUD ABOVE AND BELOW W/ MIN 12" END LENGTHS

EXTEND CEILING JOISTS TO BEAR ON TOP OF FIRST FLOOR WALL AND FRAME SECOND FLOOR WALL ON TOP OF CEILING JOISTS

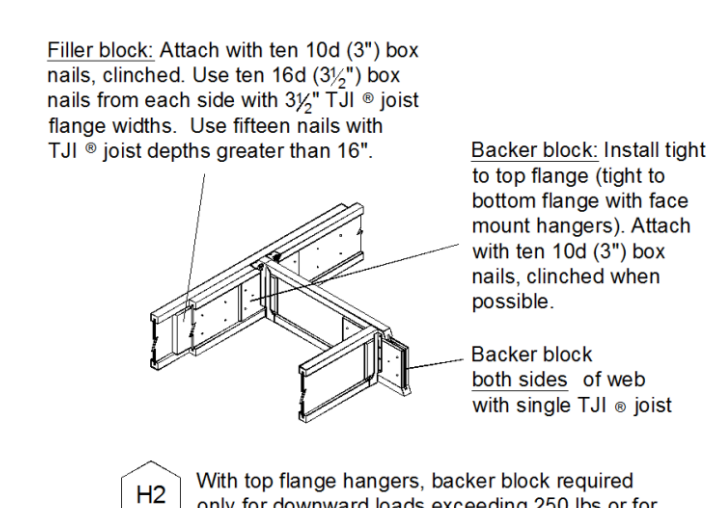
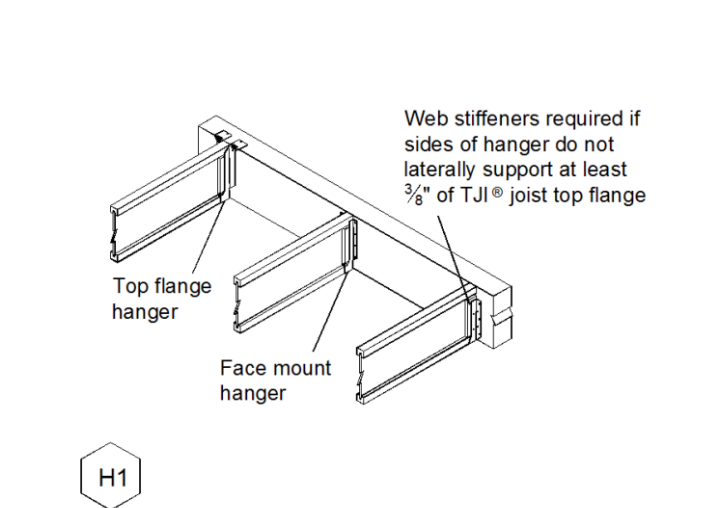
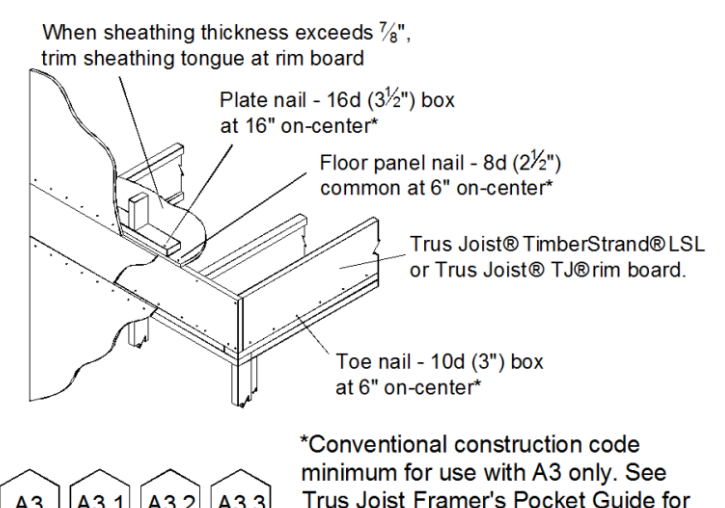
PORTAL FRAME – SEE STRUCTURAL DETAILS FOR ADDITIONAL INFORMATION

GENERAL NOTES:

- Joists may be shifted up to 3" from on center spacing to avoid hanger interference, flush beams and/or plumbing drops. **DO NOT CUT JOIST FLANGES.**
- All EWP beams have been designed assuming full width support of the members/piles, unless noted otherwise.
- This drawing may contain deviations from the original project documents. It is the responsibility of the contractor to notify the project Design Professional of these deviations to verify conformance with the original design intent of the project.

GENERAL NOTES:

- This layout is intended for the use of TrusJoist engineered wood products only. The substitution of other wood products with this layout is NOT PERMITTED. Please identify the TJI®, TimberStrand® LSL, Microllam® LVL and Parallam® PSL stamps on the product to ensure that this layout is valid for the products actually installed.
- Only header openings and roof loads which affect Weyerhaeuser product sizes have been denoted on this layout. In addition to and 'CS' detail callouts shown, solid blocking and/or squash blocks are required to provide vertical load transfer from all concentrated load locations to foundation below. See Pocket Framers Guide for appropriate detail(s)



These joist placement layouts have been prepared for the specification of this project only. This service is solely intended for product application assurance and is not intended to circumvent the need for a design professional as determined by the building codes. The designer of record and/or builder/framer is responsible to assure these drawings are compatible with the overall project.