

# HATTERAS

## HATTERAS

### REVISION LIST - STRUCTURAL:

1. CODE UPDATE TO 2018 NGR. (1-19)
2. CALLED OUT JOIST SERIES/SPACING SECOND FLOOR FRAMING AND CRAWL. ADDED EXTRA JOISTS (1-19)
3. (2) 2 x 6 HEADERS WHERE APPLICABLE (1-19)
4. 2 x 6 GARAGE WING WALLS AND (3) PLY HEADERS (1-19)
5. EXTERIOR WALLS CHANGED FROM 2X6 TO 2X4 EXCEPT WHERE SHADED (08-01-20)
6. SQUARE FOOTAGE CHANGES DUE TO FIXES OF MISCALCULATIONS (08-01-20)

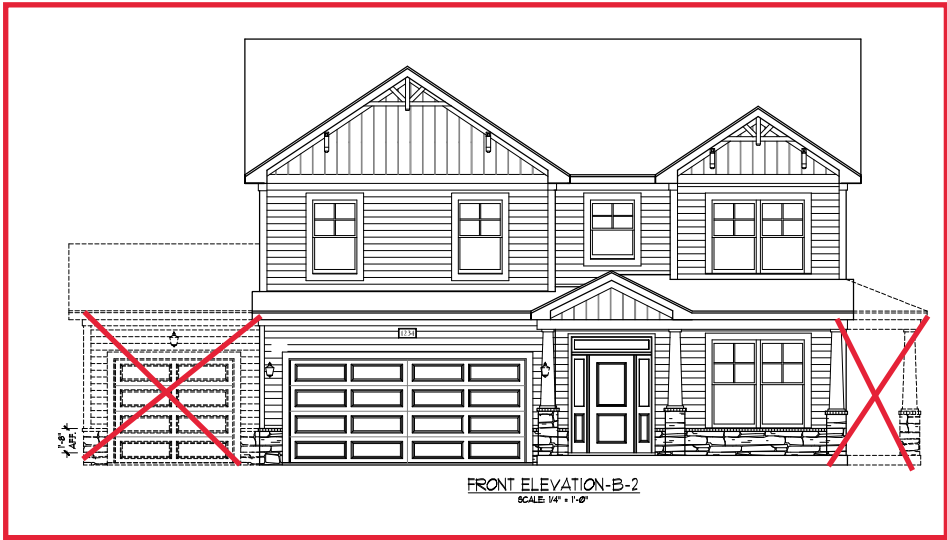
## HATTERAS

### REVISION LIST - ARCHITECTURAL:

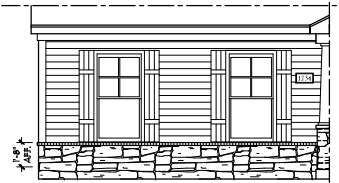
#### CHANGES 0801-20

1. REMOVED ALL SHINGLE HATCHES FROM ELEVATIONS
2. REMOVED ALL GRIDS FROM SIDE AND REAR ELEVATIONS
3. REMOVED GRIDS FROM SIDELIGHTS AND TRANSOM ABOVE FRONT DOOR
4. CHANGED ALL CORNER BOARDS ON ELEVATIONS TO 4" INSTEAD OF 6"
5. CHANGED NOTE FOR GARAGE DOORS ON ALL ELEVATIONS
6. VERIFIED COACH LIGHT LOCATIONS
7. SHOWED 'X/2'/'X/3' ELEVATIONS WITH BOTH BRICK AND STONE
8. HATCHED ROWLOCK WHERE NEEDED
9. ADDED COLUMN DETAIL TO SHEET A-2 & A-4
10. REMOVED HARDWARE FROM GARAGE ON ALL B- ELEVATIONS
11. REMOVED ALL HARDWARE FROM SHUTTERS AND GARAGE DOOR ON C- ELEVATIONS AND MADE THEM B&B
12. VERIFIED SQUARE FOOTAGE OF ALL ELEVATIONS AND UPDATED ON SHEET A-6. PORCH SIZES DIFFER DUE TO COLUMN CHOICES.
13. MOVED ALL OPTIONS TO SEPARATE SHEET
14. CHANGED STANDARD PATIO TO 12'X10'
15. REMOVED 'FLEX ROOM' AND MADE IT STANDARD 'STUDY'
16. CREATED PARTIAL PLANS FOR ALL ELEVATIONS TO SHOW BRICK/STONE
17. ADDED INSULATION DETAIL (SEE AD-1)
18. ADDED OPTIONAL GOURMET KITCHEN
19. REMOVED FLOOR HATCHING
20. REMOVED STAIR NUMBERS
21. REMOVED VAULTS FROM BEDROOMS
22. ADDED TRAY CEILING TO OWNER'S BEDROOM
23. CHANGED OWNER'S BATH TO SHOW OWNER'S BATH 1 OPTION. ADDED OWNER'S BATH 2 & OWNER'S BATH 3 OPTIONS
24. REMOVED NUMBER SIGNS FROM ALL ROOM TITLES
25. VERIFIED ROOM SIZES
26. ADDED SLAB INTERFACE SHEET (SEE A-4)
27. ADDED CONDUIT LINE IN KITCHEN
28. NOTED PENDANT LIGHTS IN KITCHEN AS 'OPTIONAL PENDANTS'
29. CHANGED KITCHEN LIGHT TO 'STD 3-BULB'
30. CHANGED LIGHT OVER KITCHEN SINK TO CEILING MOUNT LIGHT
31. ADDED NOTE TO ALL CEILING FANS 'STD LIGHT, OPT FAN/LT PREWIRE'
32. REMOVED WORD 'KEYLESS' IN GARAGE
33. PLACED OPTIONAL FLOOR OUTLETS IN FAMILY ROOM
34. REMOVED ALL OUTLETS (EXCEPT FLOOR OUTLETS IN FAMILY ROOM, TV OUTLETS, & PHONE OUTLETS
35. PLACED CO2 DETECTORS WHERE NEEDED
36. REMOVED CEILING MOUNT LIGHT IN BATH 2
37. ROOF VENT CALCULATIONS ADDED TO ROOF PLAN
38. VERIFIED VENTILATION AND LIGHT REQUIREMENTS AT OWNER'S BEDROOM MEETS CODE. (2020-08-01)

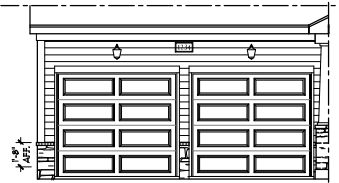




FRONT ELEVATION-B-2  
SCALE 1/4" = 1'-0"



SIDE LOAD  
GARAGE OPTION  
(NOT AVAILABLE WITH OPTIONAL ONE-CAR GARAGE)  
SCALE 1/4" = 1'-0"



DOUBLE GARAGE  
DOOR OPTION  
SCALE 1/4" = 1'-0"



FRONT ELEVATION-B-3  
SCALE 1/4" = 1'-0"

BRICK OR STONE  
LEDGE AS SPEC. (TYP.)



PRICE, PROMOTIONS, INCENTIVES, FEATURES, OPTIONS, FINISHES AND MATERIALS ARE SUBJECT TO CHANGE WITHOUT NOTICE. DIMENSIONS ARE SUBJECT TO CHANGE WITHOUT NOTICE. ALL DIMENSIONS ARE TO FACE UNLESS OTHERWISE NOTED. MATERIALS AND FINISHES ARE TO BE DETERMINED BY THE ARCHITECT. THIS SET OF DRAWINGS IS NOT TO BE USED FOR CONSTRUCTION OF HOUSES OR LOT SHALL BE ESTABLISHED BY THE SITE PLAN. THIS SET OF DRAWINGS IS NOT TO BE USED FOR CONSTRUCTION OF HOUSES OR LOT SHALL BE ESTABLISHED BY THE SITE PLAN. ANY USE, REPRODUCTION, ADAPTATION OR DISPLAY OF THESE DRAWINGS WITHOUT THE WRITTEN PERMISSION OF DREAM FINDERS HOMES IS STRICTLY PROHIBITED. SALES CONSULTANT FOR CURRENT DETAILS. COPYRIGHT © DREAM FINDERS HOMES.

DREAM FINDERS HOMES  
HATTERAS

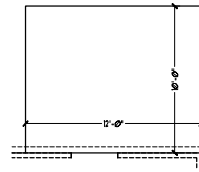
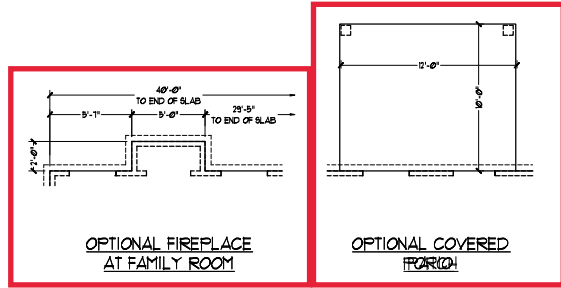
DATE: JANUARY 15, 2019  
REV: AUGUST 01, 2020  
SCALE: AS NOTED  
DRAWN BY: \_\_\_\_\_  
ENGINEERED BY: \_\_\_\_\_  
REVIEWED BY: \_\_\_\_\_

B-2 & B-3  
ELEVATIONS W/  
STONE

A-2.2

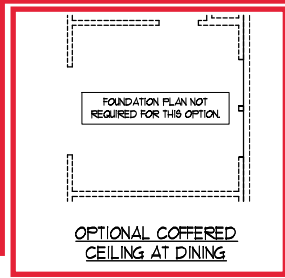
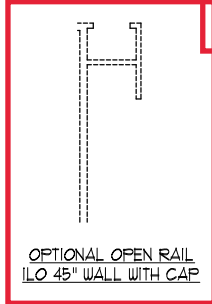
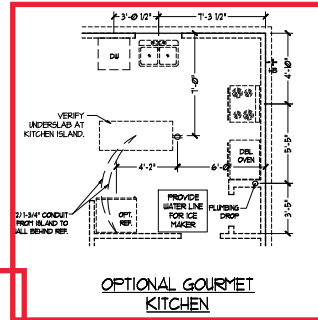






FOUNDATION PLAN NOT REQUIRED FOR THIS OPTION.

OPTIONAL WINDOW AT FAMILY ROOM

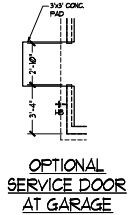
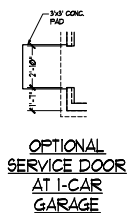
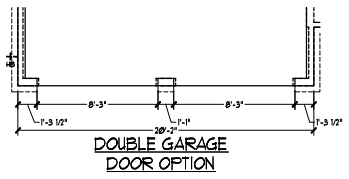
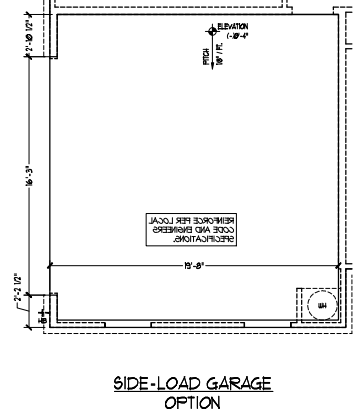
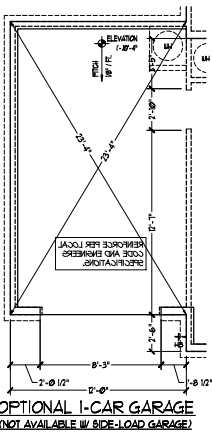
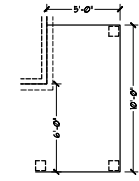


FOUNDATION PLAN NOT REQUIRED FOR THIS OPTION.

OPTIONAL OPENING TO STUDY

FOUNDATION PLAN NOT REQUIRED FOR THIS OPTION.

OPTIONAL BISSING DOORS AT STUDY

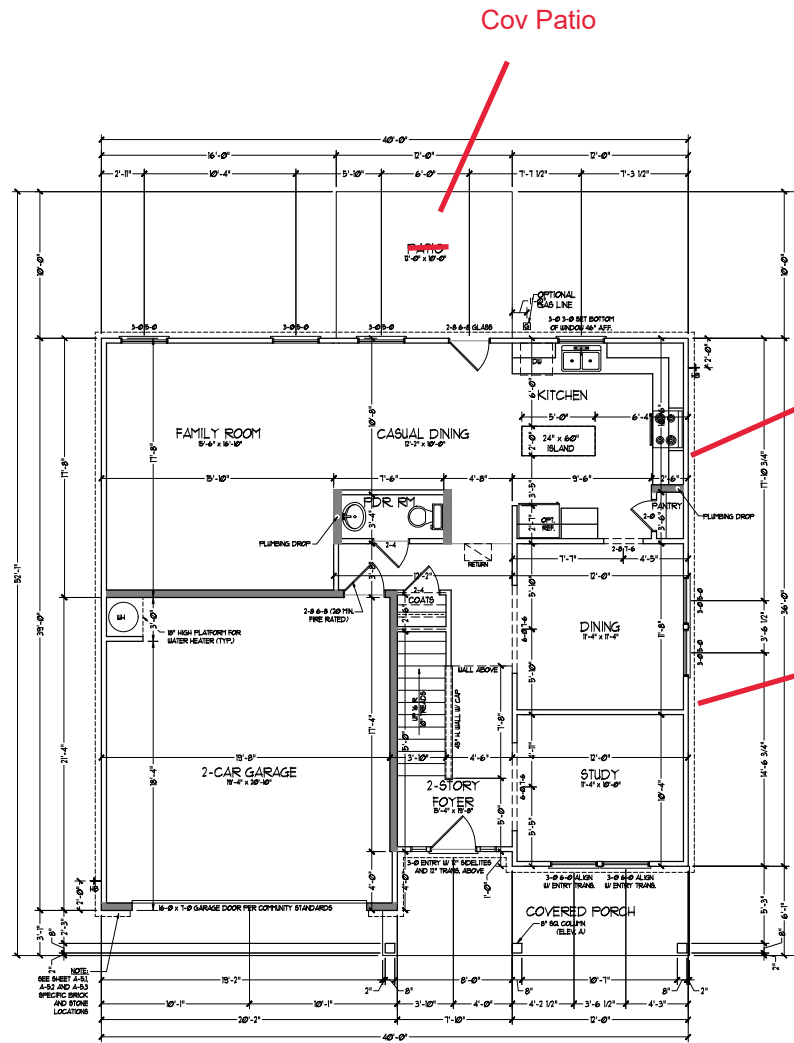


PRICE, PROMOTIONS, INCENTIVES, FEATURES, OPTIONS, FINISHES, AND MATERIALS ARE SUBJECT TO CHANGE WITHOUT NOTICE. DIMENSIONS ARE SUBJECT TO CHANGE WITHOUT NOTICE. THIS IS A PRELIMINARY PLAN. ALL DIMENSIONS ARE TO FACE UNLESS OTHERWISE NOTED. ALL WALLS IN ACTUAL CONSTRUCTION ARE TO BE FINISHED. THIS PLAN OR PORTION THEREOF WILL BE INTERFERED BY THE DATE PLAN IS REVISED. THIS PLAN IS THE PROPERTY OF DREAM FINDERS HOMES. ANY USE, REPRODUCTION, ADAPTATION OR DISPLAY OF THIS PLAN WITHOUT THE WRITTEN PERMISSION OF DREAM FINDERS HOMES IS STRICTLY PROHIBITED. © 2019 DREAM FINDERS HOMES.

DREAM FINDERS HOMES  
HATTERAS

DATE: JANUARY 15, 2019  
REV: AUGUST 01, 2020  
SCALE: 1/4"=1'-0"  
DRAWN BY:  
ENGINEERED BY:  
REVIEWED BY:

SLAB INTERFACE PLAN  
A-4.1



FIRST FLOOR PLAN  
(A1)

SQUARE FOOTAGE	
1st FLOOR	3771 SQ. FT.
2nd FLOOR	1971 SQ. FT.
TOTAL	5742 SQ. FT.
GARAGE:	
FRONT PORCH (ELEV. A + C1)	157 SQ. FT.
FRONT PORCH (ELEV. B1)	145 SQ. FT.
STD. REAR PATIO	50 SQ. FT.
1st FLOOR OPTIONS:	
OPT. COVERED PORCH	50 SQ. FT.
OPT. PORCHICE	10 SQ. FT.
INSULATED OPTIONS:	
OPT. 1-CAR GARAGE	248 SQ. FT.
OPT. 17'-0" x 17'-0" EXTENDED PORCH	150 SQ. FT.

SQUARE FOOTAGE BY FULL BRICK	
1st FLOOR	193 SQ. FT.
2nd FLOOR	162 SQ. FT.
TOTAL	355 SQ. FT.
GARAGE:	
FRONT PORCH (ELEV. A + C1)	157 SQ. FT.
FRONT PORCH (ELEV. B1)	145 SQ. FT.
STD. REAR PATIO	50 SQ. FT.
1st FLOOR OPTIONS:	
OPT. COVERED PORCH	50 SQ. FT.
OPT. PORCHICE	10 SQ. FT.
INSULATED OPTIONS:	
OPT. 1-CAR GARAGE	248 SQ. FT.
OPT. 17'-0" x 17'-0" EXTENDED PORCH	150 SQ. FT.

NOTE: ALL EXTERIOR WALLS AND ATTIC WALLS ARE TO BE 2" x 4" @ 16" O.C. (MAX). ALL INTERIOR LOAD BEARING WALLS ARE TO BE 2" x 4" @ 16" O.C. (MAX) AND NON-LOAD BEARING INTERIOR WALLS ARE TO BE 2" x 4" @ 16" O.C. (MAX).

2x6 WALL

SHADED WALLS ARE TO BE 2" x 6" @ 16" O.C. (LOAD BEARING) OR 2" x 4" @ 16" O.C. (NON-LOAD BEARING) REGARDLESS OF EXTERIOR WALL CONDITION.

\* PROVIDE MINIMUM INSULATION IN CEILING AND WALLS PER SECTION N 1002

PRICE, PROMOTIONS, INCENTIVES, FEATURES, OPTIONS, FINISHES, MATERIALS, AND SCHEDULES ARE SUBJECT TO CHANGE WITHOUT NOTICE. PERMITS ARE SUBJECT TO CHANGE WITHOUT NOTICE. SCHEDULES ARE SUBJECT TO CHANGE WITHOUT NOTICE. SCHEDULES ARE SUBJECT TO CHANGE WITHOUT NOTICE. SCHEDULES ARE SUBJECT TO CHANGE WITHOUT NOTICE. SCHEDULES ARE SUBJECT TO CHANGE WITHOUT NOTICE. SCHEDULES ARE SUBJECT TO CHANGE WITHOUT NOTICE.



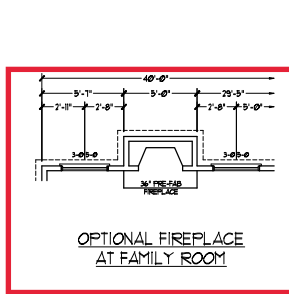
DREAM FINDERS HOMES  
HATTERAS

DATE: JANUARY 15, 2019  
REV: AUGUST 01, 2020  
SCALE: 1/4" = 1'-0"  
DRAWN BY:  
ENGINEERED BY:  
REVIEWED BY:

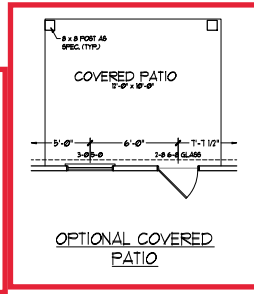
FIRST FLOOR PLAN  
A-6



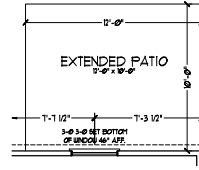
OPTIONAL WINDOW  
AT FAMILY ROOM



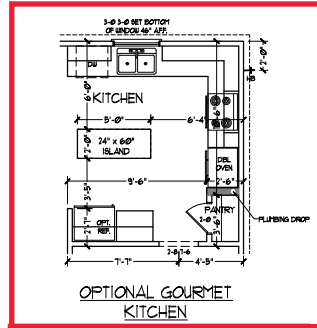
OPTIONAL FIREPLACE  
AT FAMILY ROOM



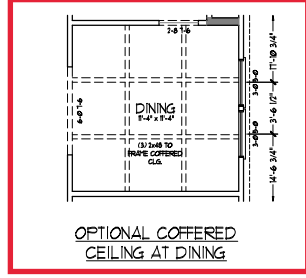
OPTIONAL COVERED  
PATIO



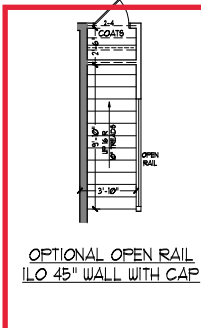
OPTIONAL EXTENDED  
PATIO



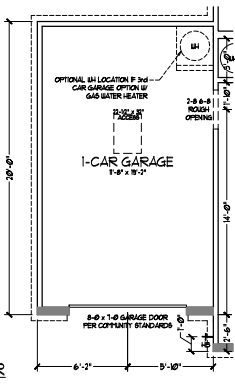
OPTIONAL GOURMET  
KITCHEN



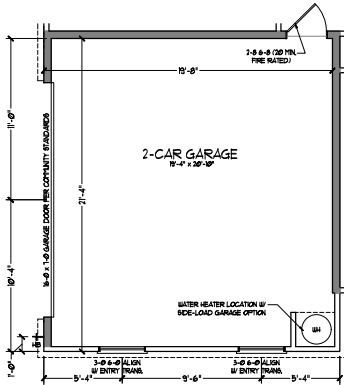
OPTIONAL COVERED  
CEILING AT DINING



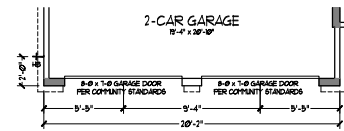
OPTIONAL OPEN RAIL  
ILO 45" WALL WITH CAP



OPTIONAL 1-CAR GARAGE  
(NOT AVAILABLE W/ SIDE-LOAD GARAGE)



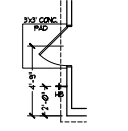
SIDE-LOAD GARAGE  
OPTION



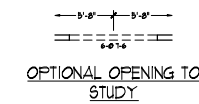
DOUBLE GARAGE  
DOOR OPTION



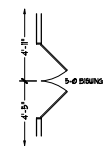
OPTIONAL  
SERVICE DOOR  
AT 1-CAR  
GARAGE



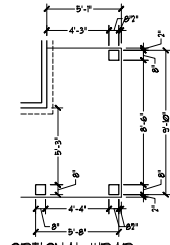
OPTIONAL  
SERVICE DOOR  
AT GARAGE



OPTIONAL OPENING TO  
STUDY



OPTIONAL BISWING  
DOORS AT STUDY



OPTIONAL WRAP  
DOORS AROUND PORCH  
(A-1)



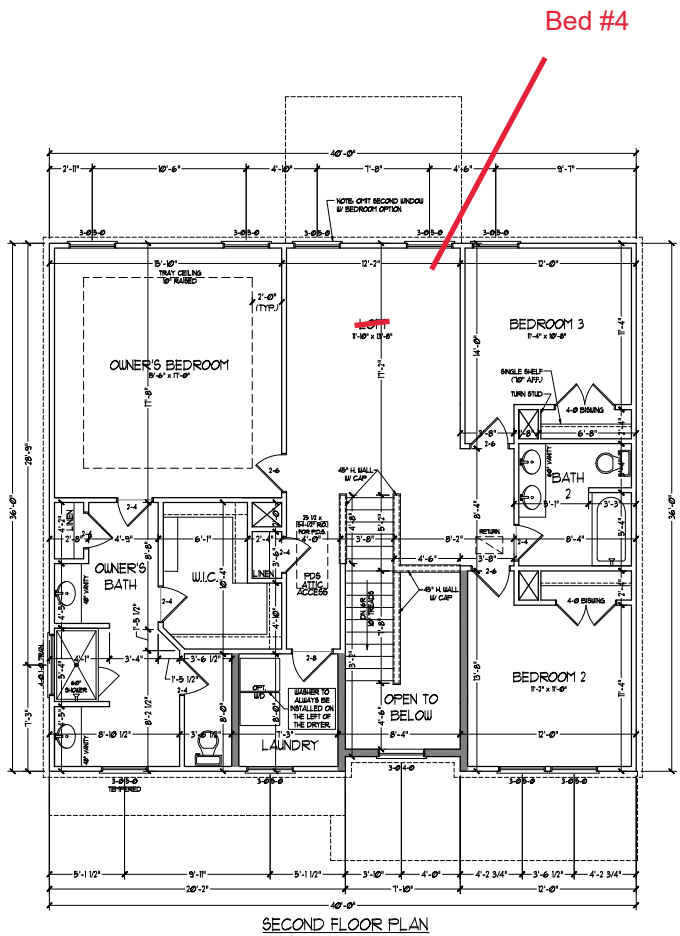
DREAM FINDERS HOMES

DREAM FINDERS HOMES  
HATTERAS

DATE: JANUARY 15, 2019  
REV: AUGUST 01, 2020  
SCALE: 1/4"=1'-0"  
DRAWN BY:  
ENGINEERED BY:  
REVIEWED BY:

FIRST FLOOR  
PLAN - OPTIONS  
A-6.1





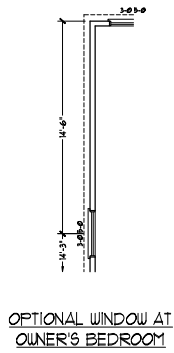
SIZES: ALL EXTERIOR WALLS AND ATTIC WALLS ARE TO BE 2 x 4 @ 16" O.C. (INS.). ALL INTERIOR LOAD BEARING WALLS ARE TO BE 2 x 4 @ 16" O.C. (INS.) AND NON-LOAD BEARING INTERIOR WALLS ARE TO BE 2 x 4 @ 24" O.C. (INS.)  
 2x6 WALL  
 SHARED WALLS ARE TO BE 2 x 6 @ 16" O.C. (LOAD BEARING) OR 2 x 6 @ 24" O.C. (NON-LOAD BEARING) REGARDLESS OF EXTERIOR WALL CONDITION.  
 PROVIDE MINIMUM INSULATION IN CEILINGS AND WALLS PER SECTION N 102.1

  
**DREAM FINDERS HOMES**  

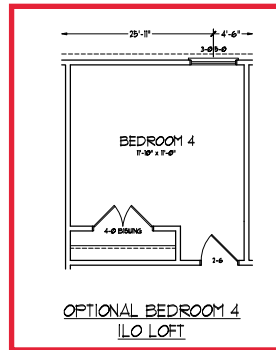
 PRICE, PROMOTIONS, INCENTIVES, FEATURES, OPTIONS, DIMENSIONS ARE SUBJECT TO CHANGE WITHOUT NOTICE. THIS PLAN IS A GENERAL CONCEPTUAL REPRESENTATION AND MAY VARY IN ACTUAL CONSTRUCTION. THE FINISHES OR HOUSE LOT WILL BE DETERMINED BY THE SITE PLAN. DIMENSIONS ARE ARTIST CONCEPTIONS. FLOOR PLANS ARE FOR INFORMATION ONLY. ANY USE, REPRODUCTION, ADAPTATION OR DISPLAY OF THIS PLAN WITHOUT THE WRITTEN PERMISSION OF DREAM FINDERS HOMES IS STRICTLY PROHIBITED. © DREAM FINDERS HOMES.

**DREAM FINDERS HOMES**  
**HATTERAS**  
 DATE: JANUARY 15, 2019  
 REV: AUGUST 01, 2020  
 SCALE: 1/4" = 1'-0"  
 DRAWN BY: \_\_\_\_\_  
 ENGINEERED BY: \_\_\_\_\_  
 REVIEWED BY: \_\_\_\_\_

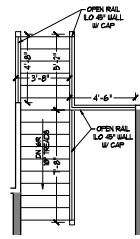
SECOND FLOOR PLAN  
**A-7**



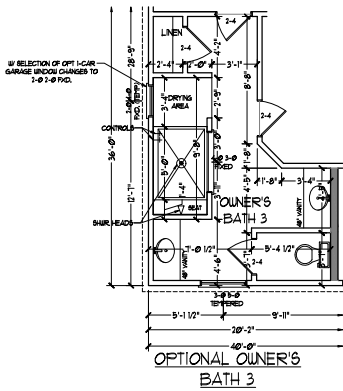
OPTIONAL WINDOW AT OWNER'S BEDROOM



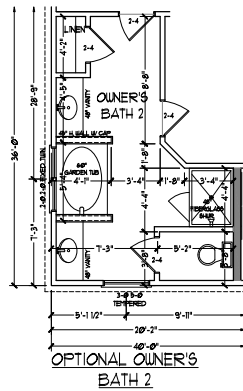
OPTIONAL BEDROOM 4 ILO LOFT



OPTIONAL OPEN RAIL ILO 45° WALL W/ CAP



OPTIONAL OWNER'S BATH 3



OPTIONAL OWNER'S BATH 2

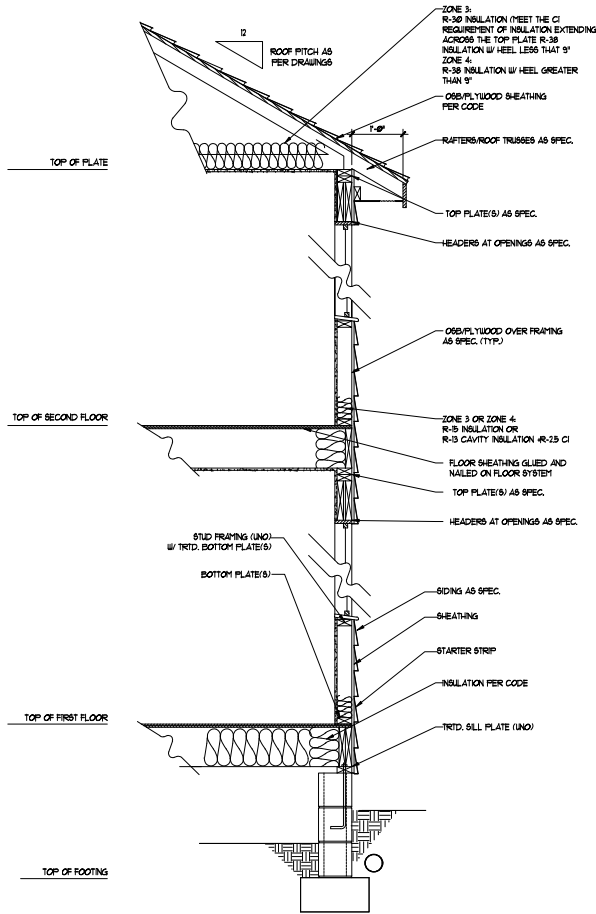


PRICE, PROMOTIONS, INCENTIVES, FEATURES, OPTIONS, FINISHES, AND MATERIALS ARE SUBJECT TO CHANGE WITHOUT NOTICE. DIMENSIONS ARE SUBJECT TO CHANGE WITHOUT NOTICE. ALL DIMENSIONS ARE TO FACE UNLESS OTHERWISE NOTED. MEASUREMENTS IN ACTUAL CONSTRUCTION MAY VARY FROM THOSE SHOWN ON THESE DRAWINGS. THE USE OF THESE DRAWINGS IS LIMITED TO THE PROJECT AND SITE SPECIFICALLY IDENTIFIED. ANY USE, REPRODUCTION, ADAPTATION, OR DISPLAY OF THESE DRAWINGS FOR ANY OTHER PROJECT WITHOUT THE WRITTEN CONSENT OF DREAM FINDERS HOMES IS STRICTLY PROHIBITED. © 2019 DREAM FINDERS HOMES.

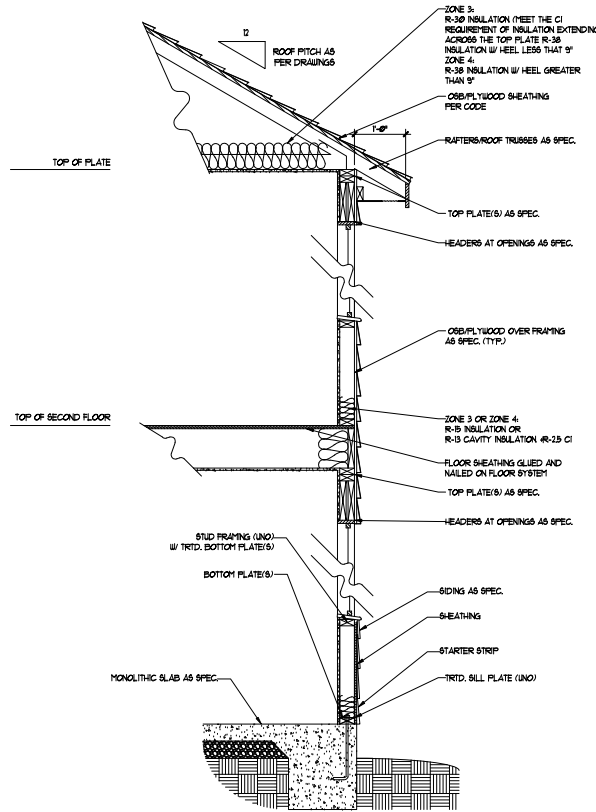
DREAM FINDERS HOMES  
HATTERAS

DATE: JANUARY 15, 2019  
REV: AUGUST 01, 2020  
SCALE: 1/4"=1'-0"  
DRAWN BY:  
ENGINEERED BY:  
REVIEWED BY:

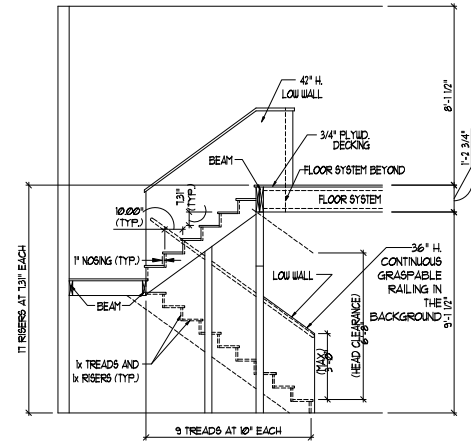
SECOND FLOOR PLAN - OPTIONS  
A-7.1



WALL SECTION W/ CRAWL SPACE  
W/ STD. SIDING SHOWN (NTS)



WALL SECTION W/ SLAB  
W/ STD. SIDING SHOWN (NTS)



TYPICAL STAIR DETAIL  
(NTS)

\* \* \* \* \*

**STAIR NOTES:**

RAILING

BALUSTERS SHALL BE SPACED SO THAT A 4" SPHERE CANNOT PASS THROUGH.

THE TRIANGULAR OPENINGS FORMED BY THE RISER, TREAD AND BOTTOM RAIL OF A GUARD AT THE OPEN SIDE OF A STAIRWAY ARE PERMITTED TO BE A SUCH A SIZE THAT A SPHERE OF 6" INCHES CANNOT PASS THROUGH.

OPENINGS FOR REQUIRED GUARDS ON THE SIDES OF STAIR TREADS SHALL NOT ALLOW A SPHERE 4 3/8 INCHES TO PASS THROUGH.

HANDRAILS

HANDRAILS FOR STAIRWAYS SHALL BE CONTINUOUS FOR THE FULL LENGTH OF THE FLIGHT FROM A POINT DIRECTLY ABOVE THE TOP RISER OF THE FLIGHT TO A POINT DIRECTLY ABOVE THE LOWEST RISER. HANDRAIL ENDS SHALL BE RETURNED OR SHALL TERMINATE IN NEEL POSTS OR SAFETY TERMINALS.

HANDRAILS ADJACENT TO A WALL SHALL HAVE A SPACE OF NOT LESS THAN 1/2" INCH BETWEEN THE WALL AND HANDRAIL.

CONTINUOUS GRASPABLE HANDRAIL MUST MEET ONE OR TYPE TWO CRITERIA

\* \* \* \* \*



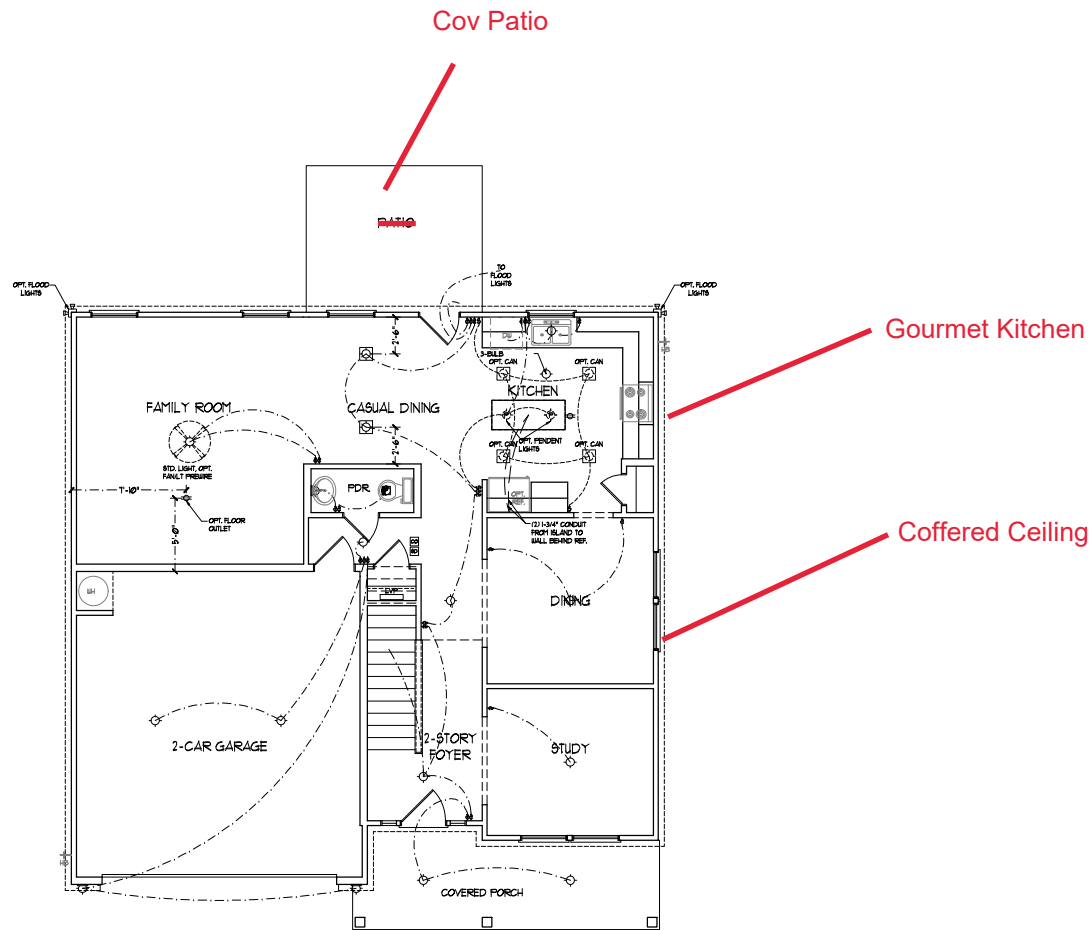
DREAM FINDERS  
HOMES

PRICE, PROMOTIONS, INCENTIVES, FEATURES, OPTIONS, FINISHES, MATERIALS, AND CONSTRUCTION METHODS ARE SUBJECT TO CHANGE WITHOUT NOTICE. DIMENSIONS ARE SUBJECT TO CHANGE WITHOUT NOTICE. MEASUREMENTS ARE TO FACE UNLESS OTHERWISE NOTED. ALL DIMENSIONS SHALL BE IN ACCORDANCE WITH THE INTERNATIONAL RESIDENTIAL CODE BOOK (IRC) AND THE INTERNATIONAL BUILDING CODE (IBC) UNLESS OTHERWISE NOTED. ALL DIMENSIONS SHALL BE IN ACCORDANCE WITH THE INTERNATIONAL RESIDENTIAL CODE BOOK (IRC) AND THE INTERNATIONAL BUILDING CODE (IBC) UNLESS OTHERWISE NOTED. ANY USE, REPRODUCTION, ADAPTATION OR DISPLAY OF THIS DOCUMENT WITHOUT THE WRITTEN PERMISSION OF DREAM FINDERS HOMES IS PROHIBITED. © 2019 DREAM FINDERS HOMES. ALL RIGHTS RESERVED.

DREAM FINDERS HOMES  
HATTERAS

DATE: JANUARY 15, 2019  
REV: AUGUST 01, 2020  
SCALE: 1/4"=1'-0"  
DRAWN BY: \_\_\_\_\_  
ENGINEERED BY: \_\_\_\_\_  
REVIEWED BY: \_\_\_\_\_  
WALL SECTIONS  
AND STAIR  
DETAIL

AD-1



FIRST FLOOR PLAN  
(A1)

**ELECTRICAL LAYOUT NOTES:**

- 1) BLOCK AND WIRE FOR ALL CEILING FAN PER PLAN
- 2) VANITY LIGHTS TO BE RET # 8" APX (TYP)
- 3) ADDITIONAL EXTERIOR QUELITS REQUIRED BY CODE TO BE LOCATED BY ELECTRICAL
- 4) PLACE SWITCHES 8" MIN FROM ROOM OPENING

ELECTRICAL LEGEND	
	15 V OUTLET
	WALL MOUNT LIGHT
	CEILING MOUNT LIGHT
	PENDANT LIGHT
	RECESSED CAN LIGHT
	PIN CAN LIGHT
	EYEBALL LIGHT
	FLUORESCENT LIGHT
	2 LAMP FLUORESCENT LIGHT
	FLOOD LIGHT
	SWITCH
	3-WAY SWITCH
	4-WAY SWITCH
	DIMMER SWITCH
	CONDUIT FOR COMPONENT WIRING
	SPEAKER
	DOORBELL CHIME
	80 V SMOKE DETECTOR
	CO DETECTOR
	EXHAUST FAN
	LOW VOLTAGE PANEL
	CEILING FAN
	CEILING FAN W LIGHT

  
**DREAM FINDERS  
HOMES**

PRICE, PROMOTIONS, INCENTIVES, FEATURES, OPTIONS, FINANCING AND CONSTRUCTION SCHEDULES ARE SUBJECT TO CHANGE WITHOUT NOTICE. ALL DIMENSIONS ARE IN FEET AND INCHES UNLESS OTHERWISE NOTED. MEASUREMENTS TO FACE UNLESS OTHERWISE NOTED. THIS DRAWING IS THE PROPERTY OF DREAM FINDERS HOMES. NO PART OF THIS DRAWING OR ANY INFORMATION CONTAINED HEREIN IS TO BE REPRODUCED OR TRANSMITTED IN ANY FORM OR BY ANY MEANS, ELECTRONIC OR MECHANICAL, INCLUDING PHOTOCOPYING, RECORDING, OR BY ANY INFORMATION STORAGE AND RETRIEVAL SYSTEM, WITHOUT THE WRITTEN PERMISSION OF DREAM FINDERS HOMES. © 2019 DREAM FINDERS HOMES.

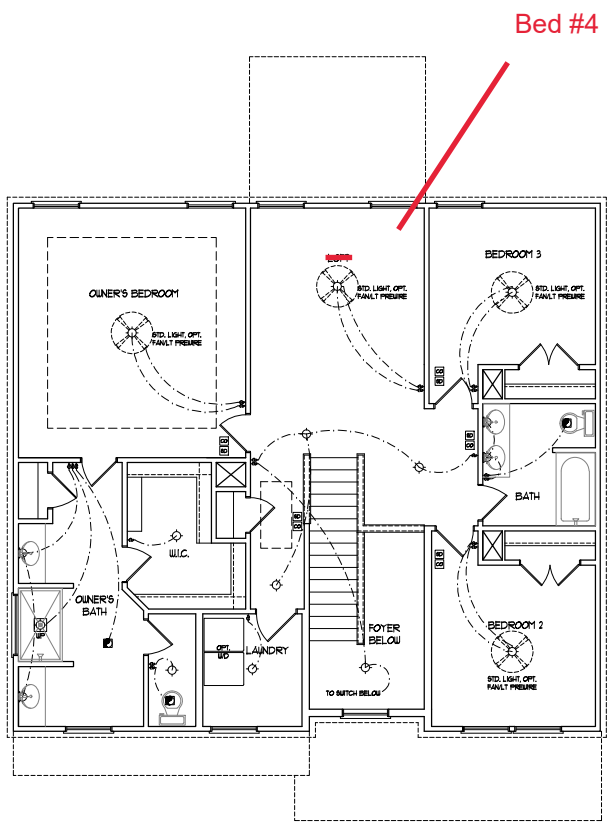
**DREAM FINDERS HOMES  
HATTERAS**

DATE: JANUARY 15, 2019  
 REV: AUGUST 01, 2020  
 SCALE: 1/4"=1'-0"  
 DRAWN BY: \_\_\_\_\_  
 ENGINEERED BY: \_\_\_\_\_  
 REVIEWED BY: \_\_\_\_\_  
 FIRST FLOOR ELECTRICAL PLAN









SECOND FLOOR PLAN

**ELECTRICAL LAYOUT NOTES:**

- 1) BLOCK AND WIRE FOR ALL CEILING FAN PER PLAN
- 2) VANITY LIGHTS TO BE MET # 80' APX. (TYP)
- 3) ADDITIONAL EXTERIOR OUTLETS REQUIRED BY CODE TO BE LOCATED BY ELECTRICAL
- 4) PLACE SWITCHES IF (MIN) FROM ROOM OPENING

**ELECTRICAL LEGEND**

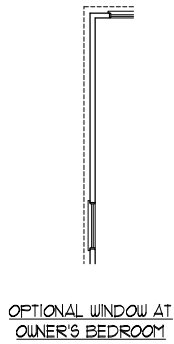
	18 V OUTLET
	WALL MOUNT LIGHT
	CEILING MOUNT LIGHT
	PERCENT LIGHT
	RECESSED CAN LIGHT
	PIN CAN LIGHT
	FLUORESCENT LIGHT
	2 LAMP FLUORESCENT LIGHT
	FLOOD LIGHT
	SWITCH
	3-WAY SWITCH
	4-WAY SWITCH
	DIFFER SWITCH
	CONDUIT FOR COMPONENT WIRE
	SPEAKER
	DOORBELL CHIME
	80 V SMOKE DETECTOR
	CO DETECTOR
	EXHAUST FAN
	LOW VOLTAGE PANEL
	CEILING FAN
	CEILING FAN W LIGHT



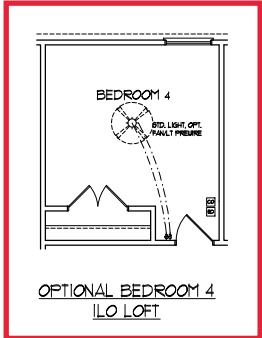
PRICE, PROMOTIONS, INCENTIVES, FEATURES, OPTIONS, FINANCING, AND CONSTRUCTION ARE SUBJECT TO CHANGE WITHOUT NOTICE. PERMITS ARE SUBJECT TO CHANGE WITHOUT NOTICE. ALL WORK SHALL BE IN ACCORDANCE WITH THE LATEST EDITION OF THE NATIONAL ELECTRICAL CODE (NEC) AND THE NATIONAL FIRE ALARM AND SIGNALING CODE (NFPA 72). THE CONTRACTOR SHALL BE RESPONSIBLE FOR OBTAINING ALL NECESSARY PERMITS AND INSURANCE. THE CONTRACTOR SHALL BE RESPONSIBLE FOR OBTAINING ALL NECESSARY PERMITS AND INSURANCE. THE CONTRACTOR SHALL BE RESPONSIBLE FOR OBTAINING ALL NECESSARY PERMITS AND INSURANCE. THE CONTRACTOR SHALL BE RESPONSIBLE FOR OBTAINING ALL NECESSARY PERMITS AND INSURANCE.

DREAM FINDER'S HOMES  
HATTERAS

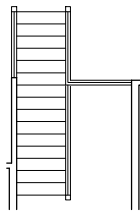
DATE: JANUARY 15, 2019  
 REV: AUGUST 01, 2020  
 SCALE: 1/4" = 1'-0"  
 DRAWN BY:  
 ENGINEERED BY:  
 REVIEWED BY:  
 SECOND FLOOR ELECTRICAL PLAN



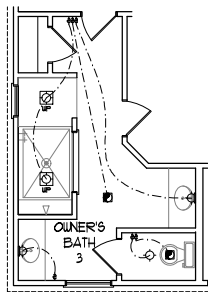
OPTIONAL WINDOW AT  
OWNER'S BEDROOM



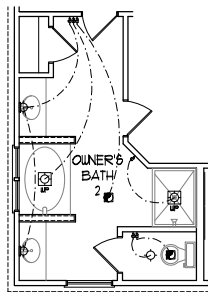
OPTIONAL BEDROOM 4  
ILO LOFT



OPTIONAL OPEN RAIL ILO  
45° WALL W/ CAP



OPTIONAL OWNER'S  
BATH 3



OPTIONAL OWNER'S  
BATH 2

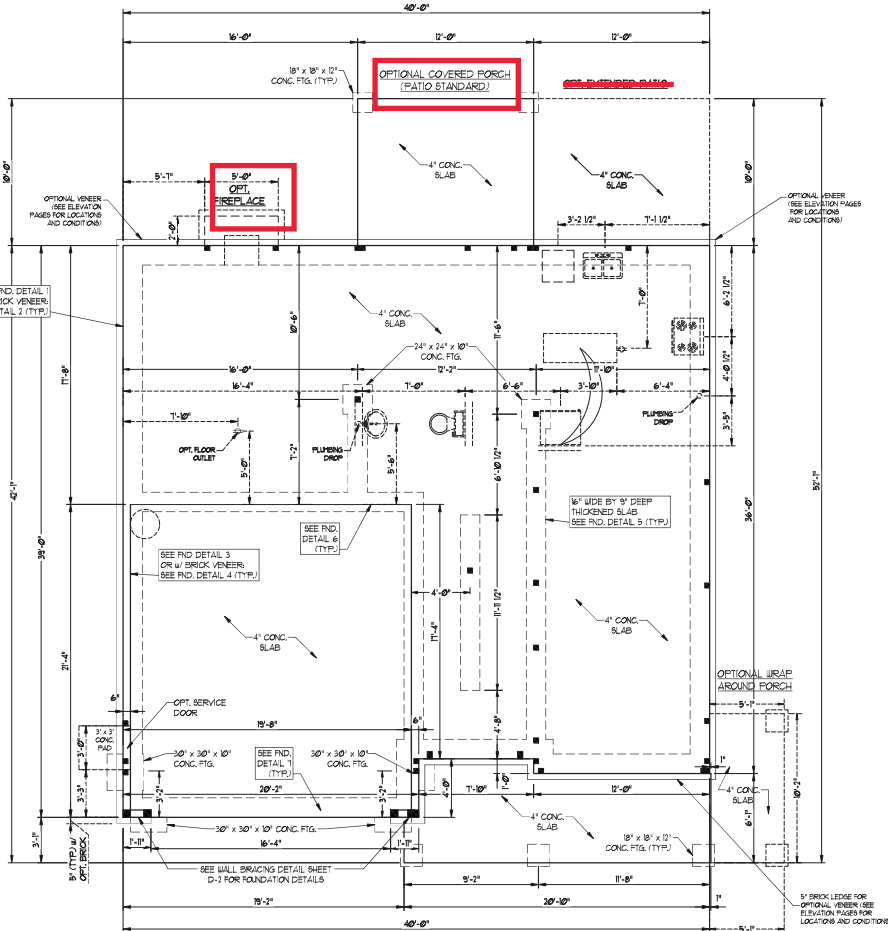


PRICE, PROMOTIONS, INCENTIVES, FEATURES, OPTIONS, FINISHES, AND MATERIALS ARE SUBJECT TO CHANGE WITHOUT NOTICE. PERMITS ARE SUBJECT TO CHANGE WITHOUT NOTICE. ALL MEASUREMENTS ARE IN FEET AND INCHES. DIMENSIONS MAY VARY IN ACTUAL CONSTRUCTION. ELECTRICAL AND MECHANICAL SYMBOLS ARE SHOWN FOR INFORMATION ONLY. HOUSES ON LOT WILL BE ENTIRELY DETERMINED BY THE SITE PLAN. ALL DIMENSIONS ARE TO FACE UNLESS OTHERWISE NOTED. DIMENSIONS ARE ARTIST CONCEPTIONS; FLOOR PLANS ARE NOT TO SCALE. ANY USE, REPRODUCTION, ADAPTATION OR DISPLAY OF THIS DOCUMENT WITHOUT THE WRITTEN PERMISSION OF DREAM FINDERS HOMES IS PROHIBITED. SALES CONSULT FOR CURRENT DETAILS. COPYRIGHT © DREAM FINDERS HOMES

DREAM FINDERS HOMES  
HATTERAS

DATE: JANUARY 15, 2019  
REV: AUGUST 01, 2020  
SCALE: 1/4"=1'-0"  
DRAWN BY:  
ENGINEERED BY:  
REVIEWED BY:

SECOND FLOOR  
ELECTRICAL  
PLAN - OPTIONS



- 30 MPH ULTIMATE DESIGN WIND SPEED, NOTES FOR LESS THAN 30' MEAN ROOF HEIGHT:**
- ENGINEER'S SEAL APPLIES ONLY TO STRUCTURAL COMPONENTS. ENGINEER'S SEAL DOES NOT CERTIFY DIMENSIONAL ACCURACY OR ARCHITECTURAL LAYOUT INCLUDING ROOF SYSTEM.
  - STRUCTURAL DESIGN PER NORTH CAROLINA RESIDENTIAL CODE 2008 EDITION WITH SPECIAL CONSIDERATION TO CHAPTER 16-1104 AND 2008 FOR 500 MPH WINDS.
  - BUILDER IS TO PROVIDE FINISH CONNECTION AS REQUIRED BY CHAPTER 16-1104 AND 2008 FOR 500 MPH WINDS OF THE NORTH CAROLINA RESIDENTIAL CODE 2008 EDITION.
  - FOUNDATION ANCHORAGE TO CONFORM WITH SECTION 1604.4 OF THE NORTH CAROLINA RESIDENTIAL CODE 2008 EDITION.
  - MEAN ROOF HEIGHT IS LESS THAN 30 FEET.
  - WALL CLADDING DESIGNED FOR 40 PSF AND 30 PSF (+/- INDICATE POSITIVE / NEGATIVE PRESSURE (TYP.)).
  - ROOF CLADDING DESIGNED FOR 40 PSF AND 30 PSF FOR ROOF PITCHES 1/2 TO 3/12 AND 40 PSF AND 30 PSF FOR ROOF PITCHES 3/12 TO 12/12.
  - 1"X6 OSB SHEATHING IS REQUIRED ON ALL EXTERIOR WALLS.
  - WALLS TO BE BRICKED IN ACCORDANCE WITH SECTION 1604.3 OF THE NORTH CAROLINA RESIDENTIAL CODE 2008 EDITION AND AS NOTED ON PLANS.
  - ENERGY EFFICIENCY COMPLIANCE AND INSULATION VALUES OF THE BUILDING TO BE IN ACCORDANCE WITH CHAPTER 1 OF THE NRC 2008 EDITION.

- 30 MPH ULTIMATE DESIGN WIND SPEED, NOTES FOR LESS THAN 30' MEAN ROOF HEIGHT:**
- ENGINEER'S SEAL APPLIES ONLY TO STRUCTURAL COMPONENTS. ENGINEER'S SEAL DOES NOT CERTIFY DIMENSIONAL ACCURACY OR ARCHITECTURAL LAYOUT INCLUDING ROOF SYSTEM.
  - STRUCTURAL DESIGN PER NORTH CAROLINA RESIDENTIAL CODE 2008 EDITION.
  - INSTALL 1/2" ANCHOR BOLTS @ 4' O.C. AND WITH 1" PLY MASONRY OR CONCRETE LOCATED 18" FROM TOP OF EACH PLATE BOLT.
  - MEAN ROOF HEIGHT IS LESS THAN 30 FEET.
  - EXTERIOR WALLS DESIGNED FOR 50 MPH WINDS.
  - WALL CLADDING DESIGNED FOR 40 PSF AND 30 PSF (+/- INDICATE POSITIVE / NEGATIVE PRESSURE (TYP.)).
  - ROOF CLADDING DESIGNED FOR 40 PSF AND 30 PSF FOR ROOF PITCHES 1/2 TO 3/12 AND 40 PSF AND 30 PSF FOR ROOF PITCHES 3/12 TO 12/12.
  - INSTALL 1"X6 OSB SHEATHING ON ALL EXTERIOR WALLS OF ALL 9' OR LESS IN ACCORDANCE WITH SECTION 1604.3 OF THE NRC 2008 EDITION. SEE THE WALL BRACING NOTES AND DETAIL SHEET FOR MORE INFORMATION.
  - ENERGY EFFICIENCY COMPLIANCE AND INSULATION VALUES OF THE BUILDING TO BE IN ACCORDANCE WITH CHAPTER 1 OF THE NRC 2008 EDITION.
  - REFER TO NOTES AND DETAIL SHEETS FOR ADDITIONAL STRUCTURAL INFORMATION.

**J.S. THOMPSON  
ENGINEERING, INC.**  
1501 HATTERAS DRIVE, SUITE 100  
MILLSBORO, NC 28450  
PHONE: (919) 759-9949 FAX: (919) 759-9921  
N.C. LICENSE NO. C-1733

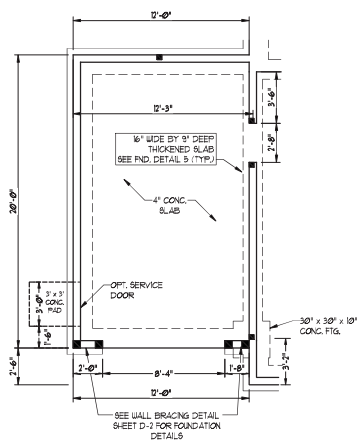
**HATTERAS  
H&H HOMES**

DATE: OCTOBER 16, 2020  
SCALE: 1/4" = 1'-0"  
DRAWN BY: HSH  
ENGINEERED BY: WFB

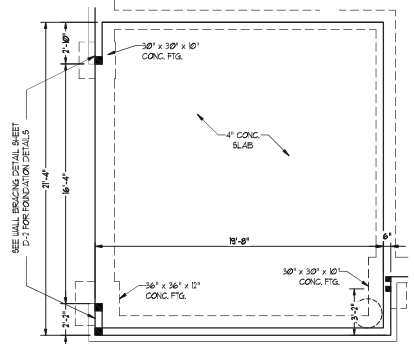


SHEET 5 OF 11  
S-1.3a  
MONO SLAB  
FOUNDATION PLAN

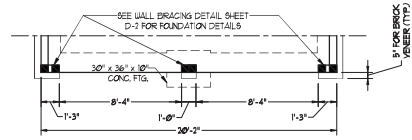
10/19/2020



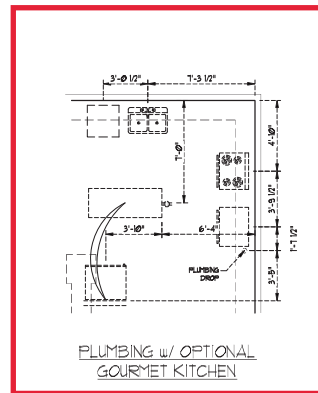
OPTIONAL 1-CAR GARAGE  
(NOT AVAILABLE W/ SIDE-LOAD GARAGE)



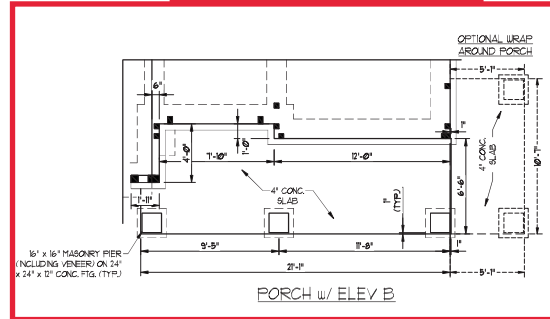
SIDE-LOAD GARAGE OPTION



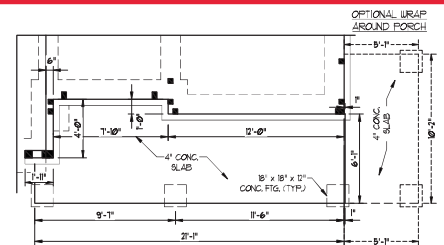
DOUBLE GARAGE  
DOOR OPTION



PLUMBING w/ OPTIONAL  
GOURMET KITCHEN



PORCH w/ ELEV B



PORCH w/ ELEV C



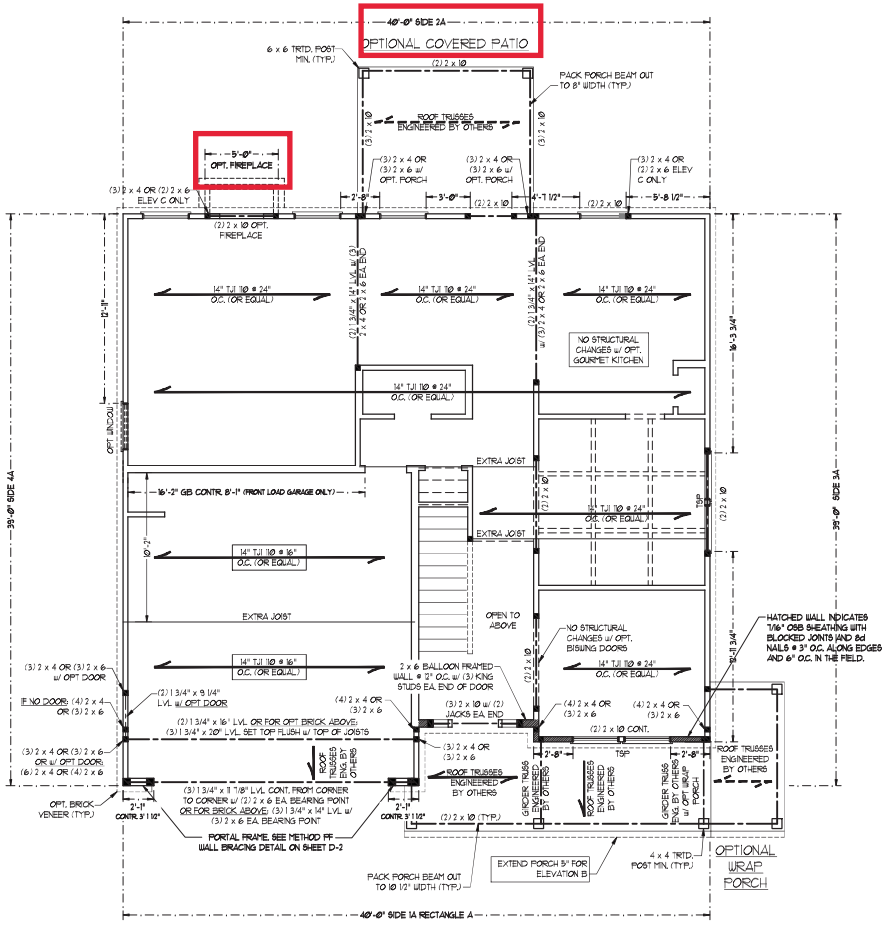
10/19/2020

**J.S. THOMPSON  
ENGINEERING, INC.**  
151188.DWG  
10/19/2020  
PHONE: (919) 789-9919 FAX: (919) 789-9921  
N.C. LICENSE NO. C-113

HATTERAS  
H&H HOMES

DATE: OCTOBER 16, 2020
SCALE: 1/4" = 1'-0"
DRAWN BY: H&H
ENGINEERED BY: WTB

SHEET 6 OF 11  
S-1.3b  
MONO SLAB  
FOUNDATION PLAN



NOTE: BCI 4500A-18 JOISTS MAY BE INSTALLED IN LIEU OF 12" I/O JOISTS AT THE DEPTH AND SPACING INDICATED ON THE PLAN

NOTE: ALL EXTERIOR WALLS AND ATTIC WALLS ARE TO BE 2 x 6 @ 16" O.C. (UNO). 2 x 4 @ 16" O.C. EXTERIOR WALLS MAY BE CONSTRUCTED IN LIEU OF 2 x 6 WALLS (UNO). ALL INTERIOR LOAD BEARING WALLS ARE TO BE 2 x 4 @ 16" O.C. (UNO) AND NON-LOAD BEARING INTERIOR WALLS ARE TO BE 2 x 4 @ 24" O.C. (UNO).

**BRACED WALL DESIGN NOTES:**

- BRACED WALL DESIGN PER SECTION R602.10 OF THE NRC 2008 EDITION
- CS-4UP REFERS TO "CONTINUOUS SHEATHING - WOOD STRUCTURAL PANELS" CONTRACTOR IS TO INSTALL 1/2" OSB ON ALL EXTERIOR WALLS ATTACHED W/ 8d NAILS SPACED 4" O.C. ALONG PANEL EDGES AND 12" O.C. IN THE FIELD.
- CS-B REFERS TO "GYPSUM BOARD" CONTRACTOR IS TO INSTALL 1/2" MIN. GYPSUM WALL BOARD WHERE NOTED ON THE PLANS. FASTEN GB WITH 1 1/4" SCREWS OR 1 5/8" NAILS SPACED 7" O.C. ALONG PANEL EDGES AND IN THE FIELD INCLUDING TOP AND BOTTOM PLATES.
- BRACED WALL DESIGN APPLIED IN WIND ZONES UP TO 130 MPH. FOR HIGH WIND ZONES BRACE WALLS ARE TO BE CONSTRUCTED IN ACCORDANCE WITH CHAPTER 45 OF THE NRC 2008 EDITION.
- SEE NOTES AND DETAIL SHEETS FOR ADDITIONAL BRACED WALL INFORMATION.

**BRACED WALL DESIGN**

**RECTANGLE A**  
SIDE 1A (WIND LOAD)  
METHOD: CS-4UP/FP  
TOTAL REQUIRED LENGTH 16'2"  
TOTAL PROVIDED LENGTH 15'1"

**SIDE 2A**  
METHOD: CS-4UP  
TOTAL REQUIRED LENGTH 16'2"  
TOTAL PROVIDED LENGTH 21'

**SIDE 3A**  
METHOD: CS-4UP  
TOTAL REQUIRED LENGTH 16'6"  
TOTAL PROVIDED LENGTH 23'3"

**SIDE 4A (SIDE LOAD)**  
METHOD: CS-4UP/FP  
TOTAL REQUIRED LENGTH 16'6"  
TOTAL PROVIDED LENGTH 20'10"



10/19/2020

LINTEL SCHEDULE FOR BRICK/NATURAL STONE SUPPORT

LENGTH (FT)	SIZE OF LINTEL
UP TO 4 FT.	L 3 1/2 x 3 1/2 x 1/4
4-8	L 5 x 3 1/2 x 5/16 LLY
8 AND GREATER	L 6 x 4 x 5/16 LLY

**BRICK SUPPORT NOTES:**

LINTEL SCHEDULE APPLIES TO ALL OPENINGS IN BRICK VENEER (UNO). SEE ARCH. DRAWG FOR SIZE AND LOCATION OF OPENINGS.

- LLVY - LONG LEGS VERTICAL
- LENGTH + CLEAR OPENING
- EMBED ALL ANGLE IRONS MIN. 4" EACH SIDE INTO VENEER TO PROVIDE BEARING
- FOR ALL HEADERS 8" O.D. AND GREATER IN LENGTH ATTACH STEEL ANGLE TO HEADER W/ 2" LAG SCREWS @ 12" O.C. STAGGERED.
- FOR ALL BRICK SUPPORT & ROOF LINES, FASTEN (2) 2" x 10 BLOCKING BETWEEN STUDS W/ (4) 10d NAILS PER PLY. FASTEN 4 6" x 4" x 3/8" STEEL ANGLE TO (2) 2" x 10 BLOCKING W/ (2) 1/2" LAG SCREWS @ 12" O.C. STAGGERED. SEE SECTION R702.2(2) OF THE 2008 NRC FOR ADDITIONAL BRICK SUPPORT INFORMATION.
- PRECAST REINFORCED CONCRETE LINTELS ENGINEERED BY OTHERS MAY BE USED IN LIEU OF STEEL LINTELS.

TABLE R602.15  
MINIMUM NUMBER OF FULL HEIGHT STUDS AT EACH END OF HEADERS IN EXTERIOR WALLS

HEADER SPAN (FEET)	MINIMUM NUMBER OF STUDS	MAXIMUM STUD SPACING (INCHES) (PER TABLE R602.15)
UP TO 3'	1	24"
4'	1	24"
6'	2	24"
8'	3	24"
10'	3	24"
12'	4	24"

**STRUCTURAL NOTES:**

- ALL FRAMING LUMBER TO BE SPF # (UNO). ALL TREATED LUMBER TO BE SPF # (UNO)
- ALL LOAD BEARING HEADERS TO BE (2) 2" x 10 (UNO)
- INSTALL AN EXTRA JOIST UNDER WALLS PARALLEL TO FLOOR JOISTS WHERE NOTED ON THE PLANS.
- WINDOW AND DOOR HEADERS TO BE SUPPORTED W/ (1) JACK STUD AND (1) KING STUD EA END (UNO). SEE TABLE R602.15 FOR ADDITIONAL KING STUD REQUIREMENTS.
- SQUARES DENOTE POINT LOADS WHICH REQUIRE SOLID BLOCKING TO GIRDER OR FOUNDATION. ALL SQUARES TO BE (2) STUDS (UNO)
- FOR HIGH WIND ZONES ALL EXTERIOR WALLS TO BE SHEATHED WITH 1/2" OSB SHEATHING WITH JOINTS BLOCKED AND SECURED WITH 8d NAILS AT 3" O.C. ALONG EDGES AND 6" O.C. IN THE FIELD.
- FOR HIGH WIND ZONES SECURE ALL EXTERIOR WALL SHEATHING PANELS TO DOUBLE TOP PLATES, BANDS, JOISTS, AND GIRDERS WITH (2) ROWS OF 8d NAILS STAGGERED AT 3" O.C. PANELS SHALL EXTEND 1" BEYOND CONSTRUCTION JOINTS AND SHALL OVERLAP GIRDERS AND DOUBLE TOP PLATES THEIR FULL DEPTH.
- ALL 4 x 4 POSTS SHALL BE ANCHORED TO SLABS W/ SHORON 4544 POST BASES (OR EQUAL) AND 6 x 6 POSTS W/ ABUS6 POST BASES (OR EQUAL) (UNO). ALL 4 x 4 AND 6 x 6 POSTS TO BE INSTALLED WITH 100% CAPACITY UPLIFT CONNECTORS AT TOP (UNO)
- FOR FIBERGLASS ALUMINUM OR COPPER ENG. BY OTHERS, SECURE TO SLABS W/ (2) METAL ANGLES USING 7" CONC. SCREWS, FASTEN ANGLES TO COLUMNS W/ 1/4" THROUGH BOLTS W/ NUTS AND WASHERS. LOCATE ANGLES ON OPPOSITE SIDES OF COLUMN. THROUGH BOLTS MUST BE INSTALLED PRIOR TO SETTING COLUMN.
- REFER TO NOTES AND DETAIL SHEETS FOR ADDITIONAL STRUCTURAL INFORMATION.

**J.S. THOMPSON ENGINEERING, INC.**  
1000 W. HATTERAS AVENUE, SUITE 100  
HATTERAS, NC 28540  
PHONE: (919) 759-9919 FAX: (919) 759-9921  
N.C. LICENSE NO. C-113

**HATTERAS H&H HOMES**

DATE: OCTOBER 16, 2020  
SCALE: 1/8" = 1'-0"  
DRAWN BY: HSH  
EXAMINED BY: WTB

SHEET 7 OF 11  
S-2a  
SECOND FLOOR FRAMING PLAN

**NOTE: ALL EXTERIOR WALLS AND ATTIC WALLS ARE TO BE 2 x 6 @ 16" O.C. (UNO). 2 x 4 @ 16" O.C. EXTERIOR WALLS MAY BE CONSTRUCTED IN LIEU OF 2 x 6 WALLS (UNO). ALL INTERIOR LOAD BEARING WALLS ARE TO BE 2 x 4 @ 16" O.C. (UNO) AND NON-LOAD BEARING INTERIOR WALLS ARE TO BE 2 x 4 @ 24" O.C. (UNO).**

- BRACED WALL DESIGN NOTES:**
- BRACED WALL DESIGN PER SECTION R6-0210 OF THE NRC 2018 EDITION.
  - CS-10P REFERS TO "CONTINUOUS SHEATHING - WOOD STRUCTURAL PANELS" CONTRACTOR IS TO INSTALL 1/8" OSB ON ALL EXTERIOR WALLS ATTACHED W/ 8d NAILS SPACED 6" O.C. ALONG PANEL EDGES AND 12" O.C. IN THE FIELD.
  - GSB REFERS TO "GYPSUM BOARD" CONTRACTOR IS TO INSTALL 1/2" (MNU GYPSUM WALL BOARD WHERE NOTED ON THE PLANS, FASTEN GSB WITH 1 1/4" SCREWS OR 1 3/8" NAILS SPACED 12" O.C. ALONG PANEL EDGES AND IN THE FIELD INCLUDING TOP AND BOTTOM PLATES.
  - BRACED WALL DESIGN APPLIED IN WIND ZONES UP TO 130 MPH. FOR HIGH WIND ZONES, BRACE WALLS ARE TO BE CONSTRUCTED IN ACCORDANCE WITH CHAPTER 45 OF THE NRC 2018 EDITION. SEE NOTES AND DETAIL SHEETS FOR ADDITIONAL BRACED WALL INFORMATION.

- NOTE:**
- PER SECTION R6-0233 OF THE 2018 NRC, THE AMOUNT OF BRACING ON THE SECOND FLOOR EXCEEDS THE AMOUNT REQUIRED FOR THE FIRST FLOOR AND NO BRACED WALL ANALYSIS IS REQUIRED.
  - SHEATH ALL EXTERIOR WALLS WITH 1/8" OSB SHEATHING ATTACHED WITH 8d NAILS AT 6" O.C. ALONG PANEL EDGES AND 12" O.C. IN THE FIELD.

**LINTEL SCHEDULE FOR BRICK/NATURAL STONE SUPPORT**

LENGTH (FT.)	SIZE OF LINTEL
UP TO 4 FT.	L 3 1/2 x 3 1/2 x 14
4-8	L 5 x 3 1/2 x 5/16 LLV
8 AND GREATER	L 6 x 4 x 5/16 LLV

- BRICK SUPPORT NOTES:**
- LINTEL SCHEDULE APPLIES TO ALL OPENINGS IN BRICK VENEER (UNO). SEE ARCH. DETAILS FOR SIZE AND LOCATION OF OPENINGS.
  - (LLV) = LONG LEG VERTICAL
  - LENGTH = CLEAR OPENING
  - FIELD ALL ANGLE IRON IN 4" EACH SIDE INTO VENEER TO PROVIDE BEARING.
  - FOR ALL HEADERS 8" AND GREATER IN LENGTH, ATTACH STEEL ANGLE TO HEADER W/ 1/2" LAG SCREWS @ 12" O.C. STAGGERED.
  - FOR ALL BRICK SUPPORT \* ROOF LINES, FASTEN (2) 2 x 4 @ BLOCKING BETWEEN STUDS W/ (4) 10d NAILS PER X. FASTEN A 6" x 4" x 5/16" STEEL ANGLE TO (2) 2 x 4 @ BLOCKING W/ (2) 1/2" LAG SCREWS @ 12" O.C. STAGGERED. SEE SECTION R7-0321 OF THE 2018 NRC FOR ADDITIONAL BRICK SUPPORT INFORMATION.
- PRECAST REINFORCED CONCRETE**  
 LINTELS ENGINEERED BY OTHERS MAY BE USED IN LIEU OF STEEL LINTELS.

- STRUCTURAL NOTES:**
- ALL FRAMING LUMBER TO BE SPF #1 (UNO). ALL TREATED LUMBER TO BE SYP #1 (UNO).
  - ALL LOAD BEARING HEADERS TO BE (2) 2 x 6 (UNO).
  - WINDOW AND DOOR HEADERS TO BE SUPPORTED W/ (1) JACK STUD AND (1) KING STUD EACH END (UNO). SEE TABLE R6-0115 FOR ADDITIONAL KING STUD REQUIREMENTS.
  - SQUARES DENOTE POINT LOADS WHICH REQUIRE SOLID BLOCKING TO GROUND OR FOUNDATION. ALL SQUARES TO BE (2) STUDS (UNO).
  - FOR HIGH WIND ZONES, ALL EXTERIOR WALLS TO BE SHEATHED WITH 1/8" OSB SHEATHING WITH JOINTS BLOCKED AND SECURED WITH 8d NAILS AT 3" O.C. ALONG EDGES AND 6" O.C. IN THE FIELD.
  - FOR HIGH WIND ZONES, SECURE ALL EXTERIOR WALL SHEATHING PANELS TO DOUBLE TOP PLATES, BANDS, JOISTS, AND GIRDERS WITH (2) ROWS OF 8d NAILS STAGGERED AT 3" O.C. PANELS SHALL EXTEND 12" BEYOND CONSTRUCTION JOINTS AND SHALL OVERLAP GIRDERS AND DOUBLE END PLATES THEIR FULL DEPTH. REFER TO NOTES AND DETAIL SHEETS FOR ADDITIONAL STRUCTURAL INFORMATION.
- TSP - TRIPLE STUD POCKET

**TABLE R6-0115  
MINIMUM NUMBER OF FULL HEIGHT STUDS AT EACH END OF HEADERS IN EXTERIOR WALLS**

HEADER SPAN (FEET)	MINIMUM STUD SPACING (INCHES) PER TABLE R6-0115	W	D
UP TO 3'	1	1	1
4'	2	1	1
6'	3	2	2
7'	5	3	3
8'	6	4	4

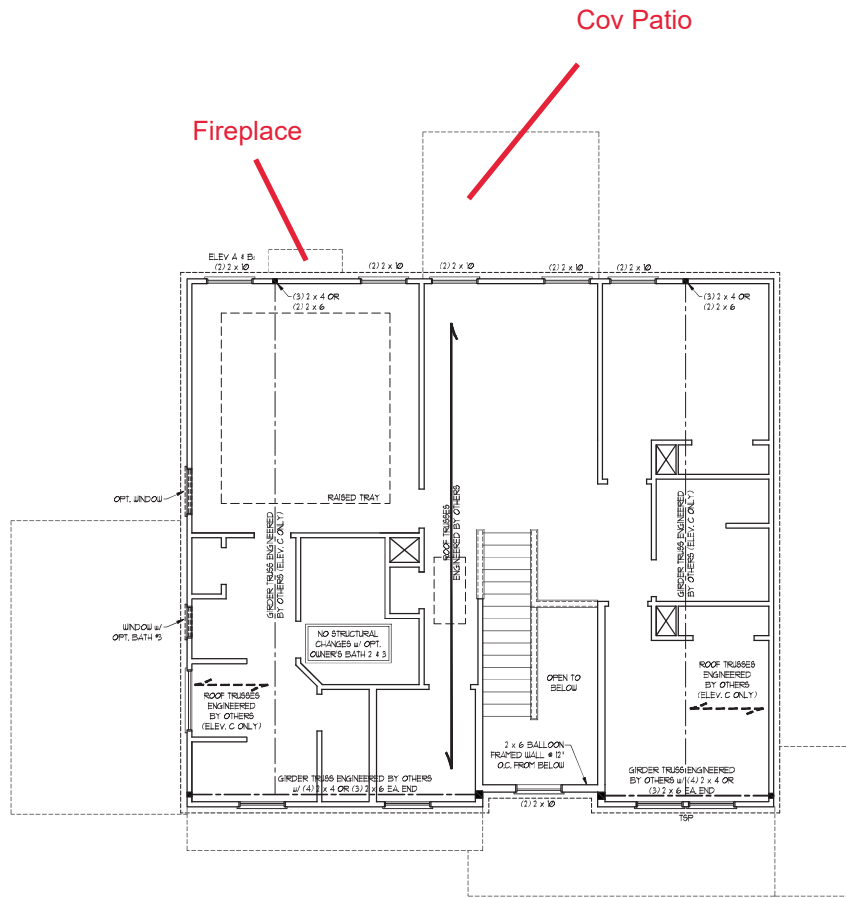
**J.S. THOMPSON ENGINEERING, INC.**  
 650 W. HATTERAS AVENUE, SUITE 100  
 HATTERAS, NC 28540  
 PHONE: (919) 789-9919 FAX: (919) 789-9921  
 N.C. LICENSE NO. C-173

**HATTERAS H&H HOMES**

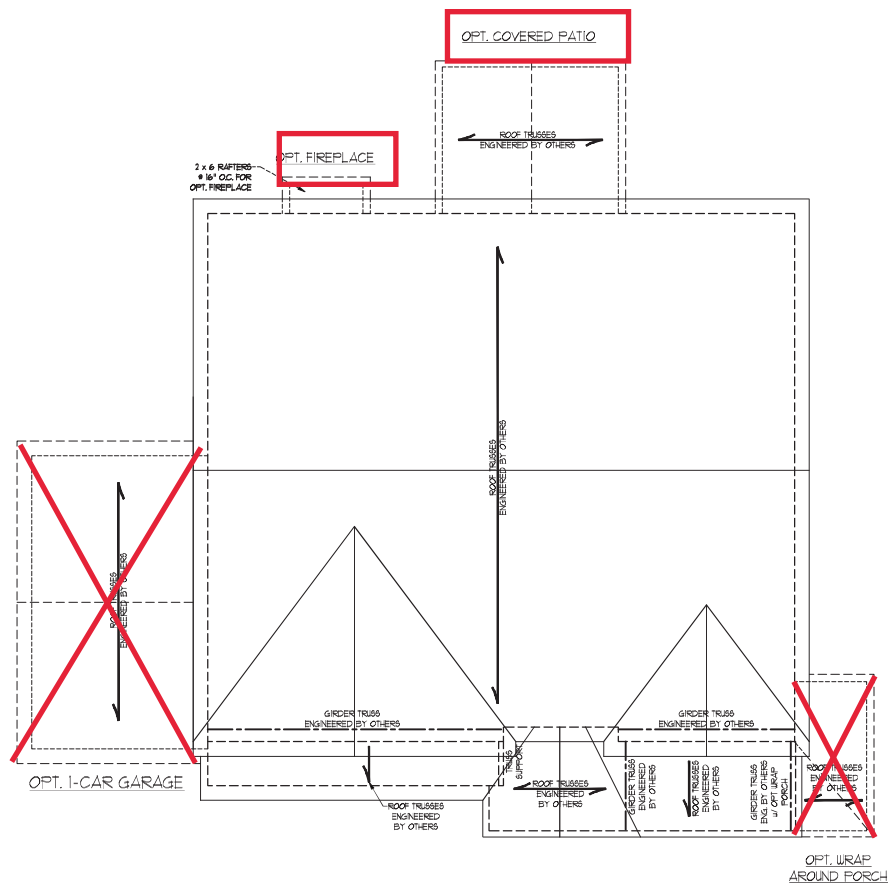
DATE: OCTOBER 16, 2020  
 SCALE: 1/4" = 1'-0"  
 DRAWN BY: HSH  
 ENGINEERED BY: WTB



SHEET 9 OF 11  
**S-3**  
 ATTIC FLOOR FRAMING PLAN  
 10/19/2020







ELEVATION A & B

- STRUCTURAL NOTES:**
1. ALL FRAMING LUMBER TO BE #1 SFF (UND).
  2. CIRCLES DENOTE (3) 2 x 4 POSTS FOR ROOF SUPPORT.
  3. FRAME CORNER WALLS ON TOP OF DOUBLE OR TRIPLE RAFTERS.
  4. HIP BRICES ARE TO BE SPACED A MIN. OF 8'-0". FASTEN MEMBERS WITH THREE ROWS OF 10d NAILS # 18" O.C. (TYP).
  5. STICK FRAME OVER-FRAMED ROOF SECTIONS W/ 2 x 8 RIDGES, 2 x 6 RAFTERS # 18" O.C. AND FLAT 2 x 6 VALLEYS OR 6x6 VALLEY TRUSSES.
  6. FASTEN FLAT VALLEYS TO RAFTERS OR TRUSSES WITH SIMPSON H2BA HURRICANE TIES # 3/4" O.C. MAX. PASS HURRICANE TIES THROUGH NOTCH IN ROOF SHEATHING. EACH RAFTER IS TO BE FASTENED TO THE FLAT VALLEY WITH A MIN. OF (6) 10d TOE NAILS.
  7. REFER TO SECTION 186011 OF THE 2018 NRC FOR REQUIRED UPLIFT RESISTANCE AT RAFTERS AND TRUSSES.
  8. REFER TO NOTES AND DETAIL SHEETS FOR ADDITIONAL STRUCTURAL INFORMATION.

- BRICK SUPPORT NOTE:**
1. FASTEN (2) 2 x 10 BLOCKING BETWEEN WALL STUDS w/ (4) 10d NAILS PER FLY. FASTEN A 6" x 4" x 5/8" STEEL ANGLE TO (2) 2 x 10 BLOCKING w/ (2) 1/2" LAG SCREWS # 1" O.C. STAGGERED. SEE SECTION 1808.2.1 OF THE 2018 NRC FOR ADDITIONAL BRICK SUPPORT INFORMATION.
  2. WHERE ROOF SLOPES EXCEED 1:10, INSTALL 3" x 3" x 1/4" STEEL PLATE STOPS AT 14" O.C. PER SECTION R108.2.2 OF THE NORTH CAROLINA RESIDENTIAL CODE, 2018 EDITION.

**J.S. THOMPSON ENGINEERING, INC.**  
 605 W. HARRIS STREET, SUITE 100  
 WILMINGTON, NC 28403  
 PHONE: (919) 789-9919 • FAX: (919) 789-9921  
 N.C. LICENSE NO. C-131

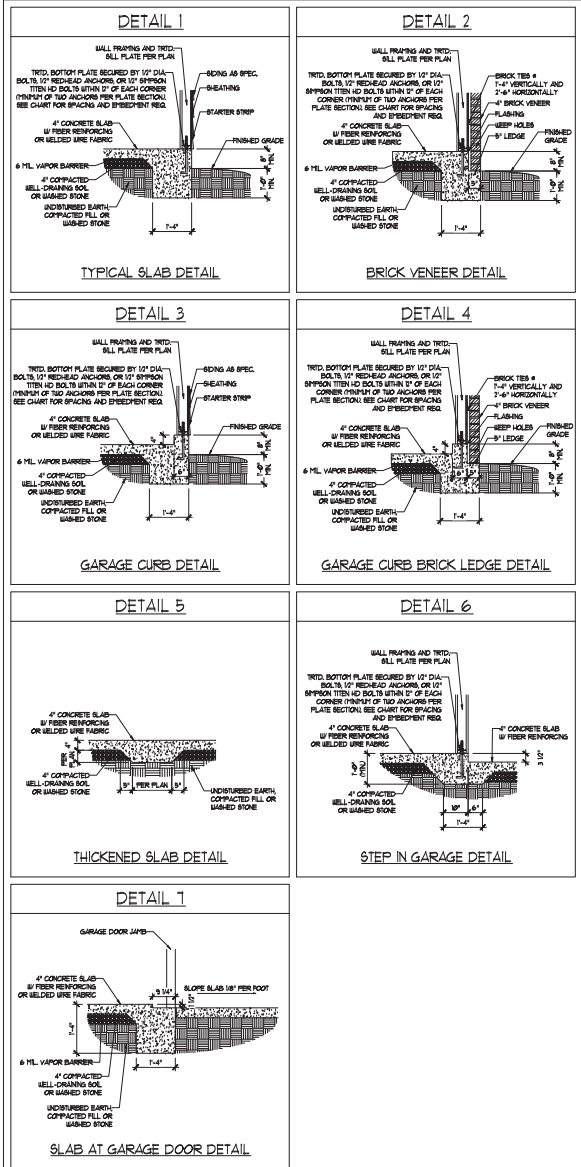
HATTERAS  
 H&H HOMES

DATE: OCTOBER 16, 2020  
 SCALE: 1/4" = 1'-0"  
 DRAWN BY: ESH  
 ENGINEERED BY: WTH

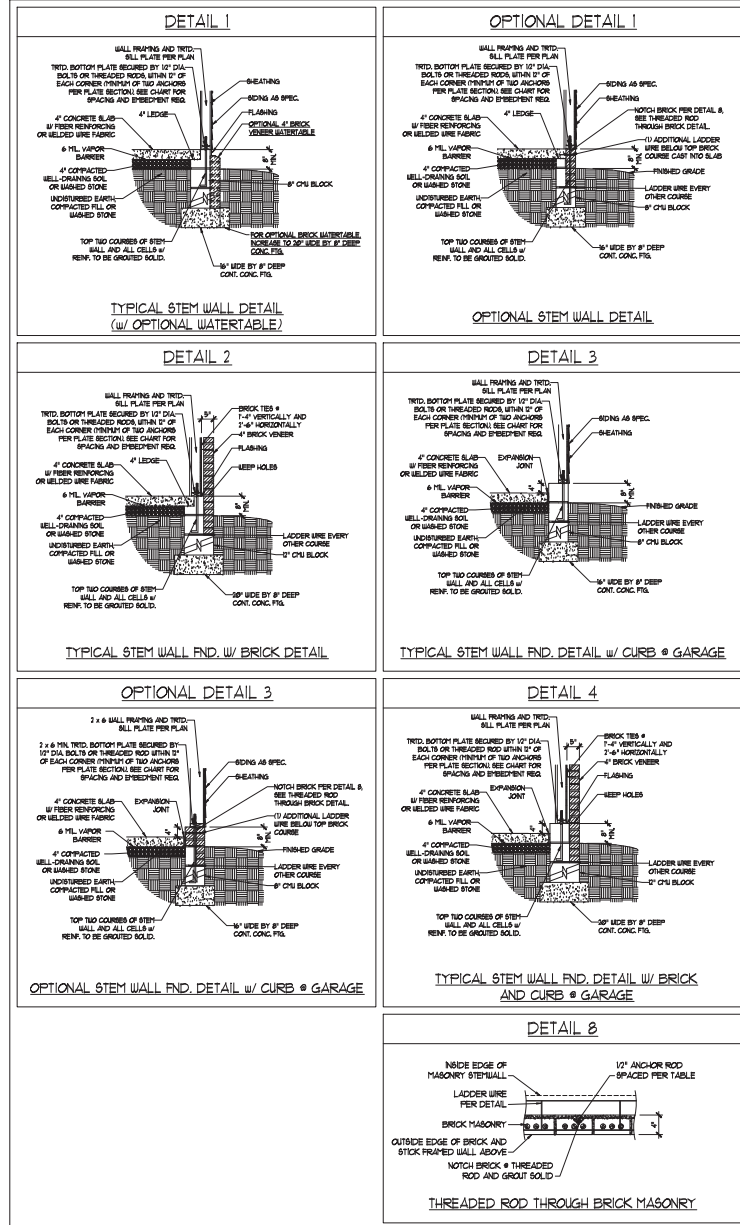


10/19/2020

### MONOLITHIC SLAB DETAILS



### STEMWALL DETAILS



#### MASONRY STEMWALL SPECIFICATIONS

WALL HEIGHT (FEET)	MASONRY WALL TYPE			
	8" CMU	4" BRICK AND 4" CMU	4" BRICK AND 8" CMU	12" CMU
2 AND BELOW	UNGRAOUTED	GROUT SOLID	UNGRAOUTED	UNGRAOUTED
3	UNGRAOUTED	GROUT SOLID	UNGRAOUTED	UNGRAOUTED
4	GROUT SOLID	GROUT SOLID w/ 4" REBAR @ 48" O.C.	GROUT SOLID	GROUT SOLID w/ 4" REBAR @ 64" O.C.
5	GROUT SOLID w/ 4" REBAR @ 36" O.C.	NOT APPLICABLE	GROUT SOLID w/ 4" REBAR @ 36" O.C.	GROUT SOLID w/ 4" REBAR @ 64" O.C.
6	GROUT SOLID w/ 4" REBAR @ 24" O.C.	NOT APPLICABLE	GROUT SOLID w/ 4" REBAR @ 24" O.C.	GROUT SOLID w/ 4" REBAR @ 64" O.C.
7 AND GREATER	ENGINEERED DESIGN BASED ON SITE CONDITIONS			

- #### STRUCTURAL NOTES
- WALL HEIGHT MEASURED FROM TOP OF FOOTING TO TOP OF THE WALL.
  - THE MULTIPLE B-TIES TOGETHER WITH LADDER WIRE AT 16" O.C. VERTICALLY. FOUNDATION NOT COMMON TO HOUSE.
  - CHART APPLICABLE FOR HOUSE FOUNDATION ONLY. CONSULT ENGINEER FOR DESIGN OF GARAGE FOUNDATION.
  - BACKFILL OF CLEAN #51 / #1 WASHED STONE IS ALLOWABLE.
  - CLASSIFIED AS GROUP 1 ACCORDING TO UNFED SOIL CLASSIFICATION SYSTEM IN ACCORDANCE WITH TABLE (B-20) OF THE 2018 INTERNATIONAL RESIDENTIAL CODE ARE ALLOWABLE.
  - PREP SLAB PER 806.2.1 AND 806.2.2 BASE OF THE 2018 INTERNATIONAL RESIDENTIAL CODE. MINIMUM 2" LAP SPLICE LENGTH.
  - LOCATE REBAR IN CENTER OF FOUNDATION WALL.
  - WHERE REQUIRED, FULL BLOCK SOLID WITH TYPE "S" PORTLAND OR 3000 PSI GROUT. USE OF "LOW LIFT GROUTING" METHOD REQUIRED WHEN FILLING WALLS WITH GROUT AT HEIGHTS OF 5' AND GREATER.

#### ANCHOR SPACING AND EMBEDMENT

WIND ZONE	120 MPH	130 MPH
	SPACING	6'-0" O.C.
EMBEDMENT	1'	1" INTO MASONRY 1" INTO CONCRETE

**J.S. THOMPSON ENGINEERING, INC.**  
 15031 W. STATE ST. SUITE 100  
 WILMINGTON, NC 28403  
 PHONE: (919) 789-9919 FAX: (919) 789-9911  
 N.C. LICENSE NO. C-1731

120 MPH - 130 MPH ULTIMATE DESIGN WIND SPEED  
 FOUNDATION DETAILS

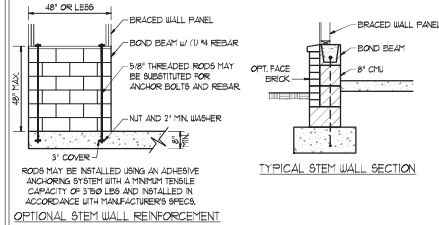
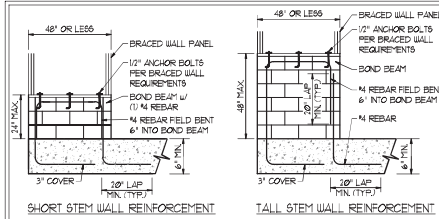
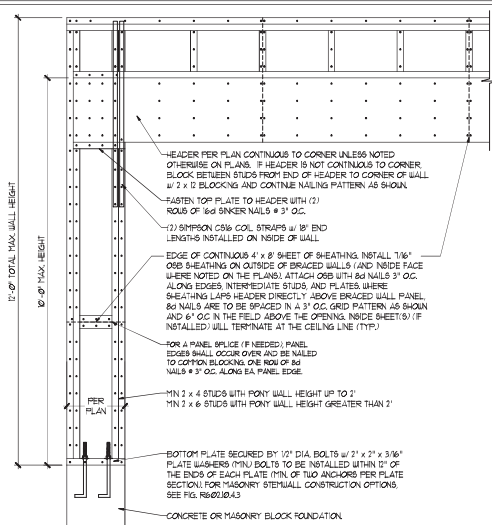
DATE: NOVEMBER 14, 2018  
 SCALE: NTS  
 DRAWN BY: JBT  
 ENGINEERED BY: JES



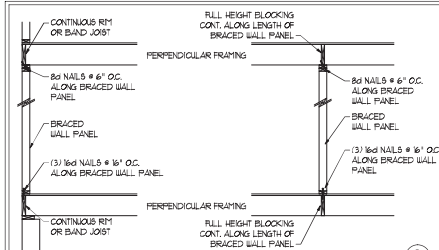
D-1  
 FOUNDATION DETAILS

**GENERAL WALL BRACING NOTES:**

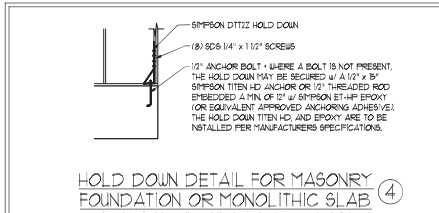
1. WALL BRACING DESIGNED IN ACCORDANCE WITH CHAPTER 6 OF THE 2018 NC RESIDENTIAL BUILDING CODE (NRC). TABLES AND FIGURES REFERENCED ARE FROM THE 2018 NRC.
2. SEE THIS SHEET FOR GENERAL DETAILS. REFER TO THE 2018 NRC FOR ADDITIONAL INFORMATION AS NEEDED.
3. SEE STRUCTURAL SHEETS FOR BRACED WALL DIMENSIONS, HOLD DOWN TIES AND LOCATIONS. BRACED WALL LINE KEY TYPICAL DESIGN SUMMARY OF REQUIRED PROVIDED TOTALS FOR EACH WALL LINE AND ANY SPECIAL NOTES OR REQUIREMENTS.
4. ALL EXTERIOR WALLS ARE TO BE SHEATHED WITH CS-48P IN ACCORDANCE WITH SECTION R602.10.3 UNLESS NOTED OTHERWISE.
5. ALL EXTERIOR AND INTERIOR WALLS TO HAVE 1/2" GYPSUM INSTALLED, WHEN NOT USING METHOD 'GB'. GYPSUM TO BE FASTENED PER TABLE R602.10.3. METHOD GB TO BE FASTENED PER TABLE R602.10.1.
6. CS-48P REFERS TO THE 'CONTINUOUS SHEATHING - WOOD STRUCTURAL PANELS' WALL BRACING METHOD. 1/8" OSB SHEATHING IS TO BE INSTALLED ON ALL EXTERIOR WALLS ATTACHED W/ 8d COMMON NAILS OR 8d 12" LONG x 8D19 DIAPHRAGM WALL BRACING 6" O.C. ALONG PANEL EDGES AND 24" O.C. IN THE FIELD (UNCL).
7. GB REFERS TO THE 'GYPSUM BOARD' WALL BRACING METHOD. 1/2" (MIN) GYPSUM WALL BOARD IS TO BE INSTALLED ON BOTH SIDES OF THE BRACED WALL, FASTENED WITH 1 1/4" SCREWS OR 1 3/8" NAILS SPACED 12" O.C. ALONG PANEL EDGES INCLUDING TOP AND BOTTOM PLATES AND INTERMEDIATE SUPPORTS (UNCL). VERIFY ALL FASTENER OPTIONS FOR 1/2" AND 3/8" GYPSUM PRIOR TO CONSTRUCTION. FOR INTERIOR FASTENER OPTIONS SEE TABLE R702.3.3. FOR EXTERIOR FASTENER OPTIONS SEE TABLE R602.3.1. EXTERIOR GB TO BE INSTALLED VERTICALLY.
8. REQUIRED BRACED WALL LENGTH FOR EACH SIDE OF THE CIRCUMSCRIBED RECTANGLE ARE INTERPOLATED PER TABLE R602.10.3. METHOD CS-48P CONTRIBUTES ITS ACTUAL LENGTH, METHOD GB CONTRIBUTES ITS ACTUAL LENGTH, AND METHOD FF CONTRIBUTES ITS ACTUAL LENGTH.



NOTE: GROUT BOND BEAMS AND ALL CELLS WHICH CONTAIN REBAR THREADED RODS AND ANCHOR BOLTS  
**MASONRY STEM WALLS SUPPORTING BRACED WALL PANELS** (2)  
 PER FIGURE R602.10.4.3

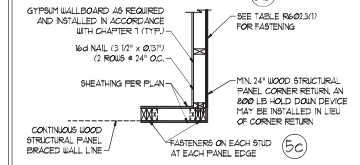
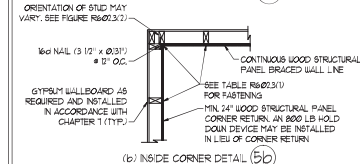
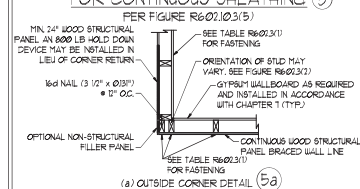


**BRACED WALL PANEL CONNECTION WHEN PERPENDICULAR TO FLOOR/CEILING FRAMING** (3)  
 PER FIGURE R602.10.4.4(1)



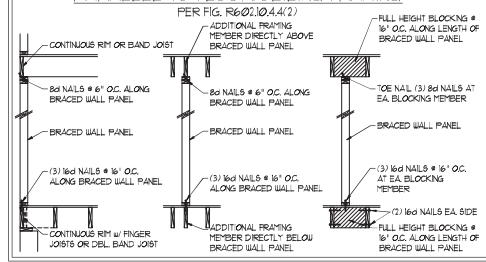
**HOLD DOWN DETAIL FOR MASONRY FOUNDATION OR MONOLITHIC SLAB** (4)  
 \* APPLICABLE ONLY WHERE SPECIFIED ON PLAN \*

**TYPICAL EXTERIOR CORNER FRAMING FOR CONTINUOUS SHEATHING** (5)

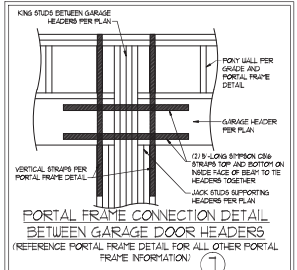


(c) GARAGE DOOR CORNER DETAIL (SEE PLAN FOR ADDITIONAL STRUCTURAL INFORMATION OR ALTERNATE CONFIGURATIONS)

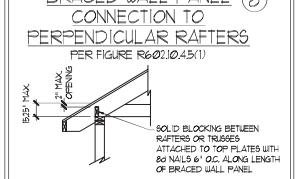
**BRACED WALL PANEL CONNECTION WHEN PARALLEL TO FLOOR/CEILING FRAMING** (6)



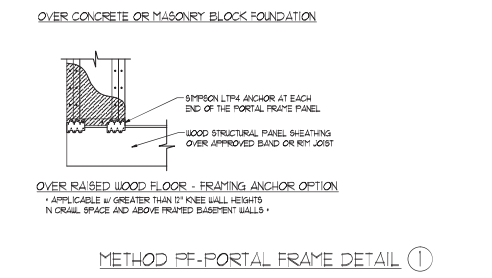
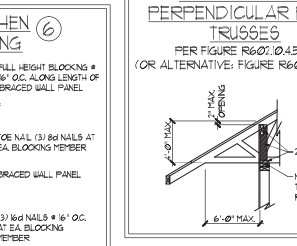
This sealed page is to be used in conjunction with a full plan set engineered by J.S. Thompson Engineering, Inc. only. Use of this individual sealed page within architectural plans or shop drawings by others is a punishable offense under N.C. Statute § 89C.23



**BRACED WALL PANEL CONNECTION TO PERPENDICULAR RAFTERS** (8)  
 PER FIGURE R602.10.4.5(1)



**BRACED WALL PANEL CONNECTION TO PERPENDICULAR ROOF TRUSSES** (9)



**METHOD FF-PORTAL FRAME DETAIL** (1)

**J.S. THOMPSON ENGINEERING, INC.**  
 605 W. HARRIS BLVD. SUITE 100  
 WAKEFORD, NC 27897  
 PHONE: (919) 799-9919 FAX: (919) 799-9921  
 N.C. LICENSE NO. C-173

**120 MPH - 130 MPH ULTIMATE DESIGN WIND SPEED WALL BRACING NOTES AND DETAILS**

DATE: NOVEMBER 14, 2018
SCALE: 1/8" = 1'-0"
DRAWN BY: JST
ENGINEERED BY: JST



D-2 BRACED WALL NOTES AND DETAILS AND FF DETAIL  
 10/19/2020

**GENERAL NOTES**

- ENGINEER'S SEAL APPLIES ONLY TO STRUCTURAL COMPONENTS INCLUDING ROOF RAFTERS, HIPs, VALLEYS, RIDGES, FLOORS, WALLS, BEAMS, HEADERS, COLLARS, CANTILEVERS, OFFSET LOAD BEARING WALLS, PIERS, GIRDER SYSTEM AND FOOTING. ENGINEER'S SEAL DOES NOT CERTIFY DIMENSIONAL ACCURACY OF ARCHITECTURAL LAYOUT INCLUDING ROOF. ENGINEER'S SEAL DOES NOT APPLY TO JOIST OR FLOOR/ROOF TRUSS LAYOUT DESIGN AND ANCHORAGE.
  - ALL CONSTRUCTION SHALL CONFORM TO THE LATEST REQUIREMENTS OF THE NORTH CAROLINA RESIDENTIAL CODE (NRC) 2018 EDITION, PLUS ALL LOCAL CODES AND REGULATIONS. THE STRUCTURAL ENGINEER IS NOT RESPONSIBLE FOR AND WILL NOT HAVE CONTROL OF CONSTRUCTION MEANS, METHODS, TECHNIQUES, SEQUENCES OR PROCEDURES OR SAFETY PRECAUTIONS AND PROGRAMS IN CONNECTION WITH THE CONSTRUCTION WORK. NOR WILL THE ENGINEER BE RESPONSIBLE FOR THE CONTRACTOR'S FAILURE TO CARRY OUT THE CONSTRUCTION WORK IN ACCORDANCE WITH THE CONTRACT DOCUMENTS.
  - STRUCTURAL DESIGN BASED ON THE PROVISIONS OF THE NRC 2018 EDITION (R602.4 - R602.1)
- | DESIGN CRITERIA                | LIVE LOAD (PSF)                                   | DEAD LOAD (PSF) | DEFLECTION (IN)                   |
|--------------------------------|---|-----------------|-----------------------------------|
| ATTIC WITH LIMITED STORAGE     | 20  | 10              | L/240 (L/360 w/ BRITTLE FINISHES) |
| ATTIC WITHOUT STORAGE          | 10  | 10              | L/360                             |
| DECKS                          | 40  | 10              | L/360                             |
| EXTERIOR BALCONIES             | 40  | 10              | L/360                             |
| FIRE ESCAPES                   | 40  | 10              | L/360                             |
| HANDRAILS/GUARDRAILS           | 100 LB OR 50 (PLF)                                | 10              | L/360                             |
| PASSENGER VEHICLE GARAGE       | 50  | 10              | L/360                             |
| ROOMS OTHER THAN SLEEPING ROOM | 40  | 10              | L/360                             |
| SLEEPING ROOMS                 | 30  | 10              | L/360                             |
| STAIRS                         | 40  | 10              | L/360                             |
| WIND LOAD                      | (BASED ON TABLE R602.4(4) WIND ZONE AND EXPOSURE) |                 |                                   |
| GROUND SNOW LOAD, Pg           | 20 (PSF)  |                 |                                   |
- 1-JOIST SYSTEMS DESIGNED WITH 12 PSF DEAD LOAD AND DEFLECTION (IN) OF L/480
  - FLOOR TRUSS SYSTEMS DESIGNED WITH 8 PSF DEAD LOAD
- FOR 15 AND 20 MPH WIND ZONES, FOUNDATION ANCHORAGE IS TO COMPLY WITH SECTION R602.6 OF THE NRC, 2018 EDITION. FOR 30 MPH, 40 MPH, AND 50 MPH WIND ZONES, FOUNDATION ANCHORAGE IS TO COMPLY WITH SECTION 4504 OF THE NRC, 2018 EDITION.
  - ENERGY EFFICIENCY COMPLIANCE AND INSULATION VALUES OF THE BUILDING TO BE IN ACCORDANCE WITH CHAPTER 1 OF THE NRC, 2018 EDITION.

**FOOTING AND FOUNDATION NOTES**

- FOUNDATION DESIGN BASED ON A MINIMUM ALLOWABLE BEARING CAPACITY OF 3000 PSF. CONTACT GEOTECHNICAL ENGINEER IF BEARING CAPACITY IS NOT ACHIEVED.
- FOR ALL CONCRETE SLABS AND FOOTINGS, THE AREA WITHIN THE PERIMETER OF THE BUILDING ENVELOPE SHALL HAVE ALL VEGETATION, TOP SOIL AND FOREIGN MATERIAL REMOVED. FILL MATERIAL SHALL BE FREE OF VEGETATION AND FOREIGN MATERIAL. THE FILL SHALL BE COMPACTED TO ASSURE UNIFORM SUPPORT OF THE SLAB, AND EXCEPT WHERE APPROVED, THE FILL DEPTHS SHALL NOT EXCEED 24" FOR CLEAN SAND OR GRAVEL. A 4" THICK BASE COURSE CONSISTING OF CLEAN GRADED SAND OR GRAVEL SHALL BE PLACED. A BASE COURSE IS NOT REQUIRED WHERE A CONCRETE SLAB IS INSTALLED ON WELL-DRAINED OR SAND-GRAVEL MIXTURE SOILS CLASSIFIED AS GROUP 1, ACCORDING TO THE UNITED SOIL CLASSIFICATION SYSTEM IN ACCORDANCE WITH TABLE R602.5 OF THE NRC, 2018 EDITION.
- PROPERLY DEWATER EXCAVATION PRIOR TO POURING CONCRETE WHEN BOTTOM OF CONCRETE SLAB IS AT OR BELOW WATER TABLE. IF APPLICABLE 3/4" - 1" DEEP CONTROL JOINTS ARE TO BE SALED WITHIN 4 TO 12 HOURS OF CONCRETE FINISHING AND WALL LOCATIONS HAVE BEEN MARKED. JOISTS WHERE NECESSARY.
- CONCRETE SHALL CONFORM TO SECTION R602.5 OF THE NRC, 2018 EDITION. CONCRETE REINFORCING STEEL TO BE ASTM A63 GRADE 60 WELDED WIRE FABRIC TO BE ASTM A95. MAINTAIN A MINIMUM CONCRETE COVER AROUND REINFORCING STEEL OF 3" IN FOOTINGS AND 1 1/2" IN SLABS. FOR POURED CONCRETE WALLS, CONCRETE COVER FOR REINFORCING STEEL MEASURED FROM THE INSIDE FACE OF THE WALL SHALL NOT BE LESS THAN 3/4". CONCRETE COVER FOR REINFORCING STEEL MEASURED FROM THE OUTSIDE FACE OF THE WALL SHALL NOT BE LESS THAN 1 1/2" FOR #5 BARS OR SMALLER, AND NOT LESS THAN 2" FOR #6 BARS OR LARGER.
- MASONRY UNITS TO CONFORM TO ACE 530/ASCE 5/11MS 402. MORTAR SHALL CONFORM TO ASTM C270.
- THE UNSUPPORTED HEIGHT OF MASONRY PIERS SHALL NOT EXCEED FOUR TIMES THEIR LEAST DIMENSION FOR UNFILLED HOLLOW CONCRETE MASONRY UNITS AND TEN TIMES THEIR LEAST DIMENSION FOR SOLID OR FILL HOLLOW PIERS. PIERS MAY BE FILLED SOLID WITH CONCRETE OR TYPE II OR S MORTAR. PIERS AND WALLS SHALL BE CAPPED WITH 8" OF SOLID MASONRY.
- THE CENTER OF EACH OF THE PIERS SHALL BEAR IN THE MIDDLE THIRD OF ITS RESPECTIVE FOOTING. EACH GIRDER SHALL BEAR IN THE MIDDLE THIRD OF THE PIERS.
- ALL CONCRETE AND MASONRY FOUNDATION WALLS ARE TO BE CONSTRUCTED IN ACCORDANCE WITH THE PROVISIONS OF SECTION R604 OF THE NRC, 2018 EDITION, OR IN ACCORDANCE WITH ACE 318, ACE 335, NCHA 1988-4 OR ACE 530/ASCE 5/11MS 402. MASONRY FOUNDATION WALLS ARE TO BE REINFORCED PER TABLE R604.1(1), R604.1(2), R604.1(3), OR R604.1(4) OF THE NRC, 2018 EDITION. CONCRETE FOUNDATION WALLS ARE TO BE REINFORCED PER TABLE R604.1(5) OF THE NRC, 2018 EDITION. STEEL CONCRETE FOUNDATION WALLS TO 2 x 6 FRAMED WALLS AT 6" OC, WHERE GRADE PERMITS (UNO).

This sealed page is to be used in conjunction with a full plan set engineered by J.S. Thompson Engineering, Inc. only. Use of this individual sealed page within architectural pages or shop drawings by others is a punishable offense under N.C. Statute § 89C-23

**FRAMING NOTES**

- ALL FRAMING LUMBER SHALL BE #2 SFF MINIMUM (F<sub>b</sub> = 875 PSI, F<sub>v</sub> = 375 PSI, E = 1600000 PSI) UNLESS NOTED OTHERWISE (UNO). ALL TREATED LUMBER SHALL BE #2 SFF MINIMUM (F<sub>b</sub> = 975 PSI, F<sub>v</sub> = 475 PSI, E = 1600000 PSI) UNLESS NOTED OTHERWISE (UNO).
- LAMINATED VENEER LUMBER (LVL) SHALL HAVE THE FOLLOWING MINIMUM PROPERTIES: F<sub>b</sub> = 2600 PSI, F<sub>v</sub> = 285 PSI, E = 1900000 PSI. LAMINATED STRAND LUMBER (LSL) SHALL HAVE THE FOLLOWING MINIMUM PROPERTIES: F<sub>b</sub> = 2325 PSI, F<sub>v</sub> = 330 PSI, E = 1900000 PSI. PARALLEL STRAND LUMBER (PSL) UP TO 1" DEPTH SHALL HAVE THE FOLLOWING MINIMUM PROPERTIES: F<sub>b</sub> = 2600 PSI, E = 1900000 PSI. PARALLEL STRAND LUMBER (PSL) MORE THAN 1" DEPTH SHALL HAVE THE FOLLOWING MINIMUM PROPERTIES: F<sub>b</sub> = 2300 PSI, E = 1900000 PSI. INSTALL ALL CONNECTIONS PER MANUFACTURER'S SPECIFICATIONS.
- STRUCTURAL STEEL SHALL CONFORM TO THE FOLLOWING ASTM SPECIFICATIONS:
  - A. W AND WT SHAPES: ASTM A992
  - B. CHANNELS AND ANGLES: ASTM A36
  - C. PLATES AND BARS: ASTM A36
  - D. HOLLOW STRUCTURAL SECTIONS: ASTM A500 GRADE B
  - E. STEEL PIPE: ASTM A53, GRADE B, TYPE E OR S
- STEEL BEAMS SHALL BE SUPPORTED AT EACH END WITH A MINIMUM BEARING LENGTH OF 3 1/2" AND FULL FLANGE WIDTH (UNO). PROVIDE SOLID BEARING FROM BEAM SUPPORT TO FOUNDATION. BEAMS SHALL BE ATTACHED AT THE BOTTOM FLANGE TO EACH SUPPORT AS FOLLOWS (UNO):
  - A. WOOD FRAMING (2) 1/2" DIA. x 4" LONG LAG SCREWS
  - B. CONCRETE (2) 1/2" DIA. x 4" WEDGE ANCHORS
  - C. MASONRY (FULLY GROUTED) (2) 1/2" DIA. x 4" LONG SIMPSON TITEN HD ANCHORS
 LATERAL SUPPORT IS CONSIDERED ADEQUATE PROVIDING THE JOISTS ARE TOE NAILED TO THE 2x NAILER ON TOP OF THE STEEL BEAM AND THE 2x NAILER IS SECURED TO THE TOP OF THE STEEL BEAM w/ (2) ROWS OF SELF TAPPING SCREWS # 16" OC, OR (2) ROWS OF 1/2" DIAMETER BOLTS # 1/4" OC. F 1/2" BOLTS ARE USED TO FASTEN THE NAILER. THE STEEL BEAM SHALL BE FABRICATED w/ (2) ROWS OF 9/16" DIAMETER HOLES # 1/4" OC.
- SQUARES DENOTE POINT LOADS WHICH REQUIRE SOLID BLOCKING TO GIRDER OR FOUNDATION. SHADED SQUARES DENOTE POINT LOADS FROM ABOVE WHICH REQUIRE SOLID BLOCKING TO SUPPORTING MEMBER BELOW.
- ALL LOAD BEARING HEADERS TO CONFORM TO TABLE R602.1(1) AND R602.1(2) OF THE NRC, 2018 EDITION, OR BE (2) 2 x 6 WITH (1) JACK AND (1) KING STUD EACH END (UNO). WHICHEVER IS GREATER, ALL HEADERS TO BE SECURED TO EACH JACK STUD WITH (4) 8d NAILS. ALL BEAMS TO BE SUPPORTED WITH (2) STUDS AT EACH BEARING POINT (UNO). INSTALL KING STUDS PER SECTION R602.3 OF THE NORTH CAROLINA RESIDENTIAL CODE, 2018 EDITION.
- ALL BEAM HEADERS OR GIRDER TRUSSES PARALLEL TO WALL ARE TO BEAR FULLY ON (1) JACK OR (2) STUDS MINIMUM OR THE NUMBER OF JACKS OR STUDS NOTED. ALL BEAMS OR GIRDER TRUSSES PERPENDICULAR TO WALL AND SUPPORTED BY (3) STUDS OR LESS ARE TO HAVE 1 1/2" MINIMUM BEARING (UNO). ALL BEAMS OR GIRDER TRUSSES PERPENDICULAR TO WALL AND SUPPORTED BY MORE THAN (3) STUDS OR OTHER NOTED COLUMN ARE TO BEAR FULLY ON SUPPORT COLUMN FOR ENTIRE WALL DEPTH (UNO). BEAM ENDS THAT BUTT INTO ONE ANOTHER ARE TO EACH BEAR EQUAL LENGTHS (UNO).
- FLITCH BEAMS SHALL BE BOLTED TOGETHER USING 1/2" DIAMETER BOLTS (ASTM A307) WITH WASHERS PLACED AT THREADED END OF BOLT. BOLTS SHALL BE BRACED AT 24" CENTERS (MAXIMUM) AND STAGGERED AT TOP AND BOTTOM OF BEAM (2" EDGE DISTANCE) WITH (2) BOLTS LOCATED AT 6" FROM EACH END (UNO).
- ALL 1-JOIST OR TRUSS LAYOUTS ARE TO BE IN COMPLIANCE WITH THE OVERALL DESIGN SPECIFIED ON THE PLANS. ALL DEVIATIONS ARE TO BE BROUGHT TO THE ATTENTION OF THE ENGINEER OF RECORD PRIOR TO INSTALLATION.
- BRACED WALL PANELS SHALL BE CONSTRUCTED ACCORDING TO THE NORTH CAROLINA RESIDENTIAL CODE 2018 EDITION WALL BRACING CRITERIA. THE AMOUNT, LENGTH, AND LOCATION OF BRACINGS SHALL COMPLY WITH ALL APPLICABLE TABLES IN SECTION R602.8.
- PROVIDE DOUBLE JOIST UNDER ALL WALLS PARALLEL TO FLOOR JOISTS. PROVIDE SUPPORT UNDER ALL WALLS PARALLEL TO FLOOR TRUSSES OR 1-JOISTS PER MANUFACTURER'S SPECIFICATIONS. INSTALL BLOCKING BETWEEN JOISTS OR TRUSSES FOR POINT LOAD SUPPORT FOR ALL POINT LOADS ALONG OFFSET LOAD LINES.
- FOR ALL HEADERS SUPPORTING BRICK VENEER THAT ARE LESS THAN 8'-0" IN LENGTH REST A 6" x 4" x 5/16" STEEL ANGLE WITH 6" MINIMUM OVERHANG AT SIDES FOR BRICK SUPPORT (UNO). FOR ALL HEADERS 8'-0" AND GREATER IN LENGTH, BOLT A 6" x 4" x 5/16" STEEL ANGLE TO HEADERS WITH 1/2" LAG SCREWS AT 2' OC. STAGGERED FOR BRICK SUPPORT. FOR ALL BRICK SUPPORT AT ROOF LINES, BOLT A 6" x 4" x 5/16" STEEL ANGLE TO (2) 2 x 10 BLOCKING INSTALLED w/ (4) 16d NAILS FL. PL. BETWEEN WALL STUDS WITH (2) ROWS OF 1/2" LAG SCREWS AT 2' OC. STAGGERED AND IN ACCORDANCE WITH SECTION R702.8.2 OF THE NRC, 2018 EDITION.
- FOR STICK FRAMED ROOFS, CIRCLES DENOTE (3) 2 x 4 POSTS FOR ROOF MEMBER SUPPORT. HIP SPLICES ARE TO BE SPACED A MINIMUM OF 8'-0". FASTEN MEMBERS WITH THREE ROWS OF 16d NAILS AT 16" OC. FRAME DORMER WALLS ON TOP OF DOUBLE OR TRIPLE RAFTERS AS SHOWN (UNO).
- FOR TRUSSED ROOFS, FRAME DORMER WALLS ON TOP OF 2 x 4 LADDER FRAMING AT 24" OC. BETWEEN ADJACENT ROOF TRUSSES. STICK FRAME OVER-FRAMED ROOF SECTIONS WITH 2 x 8 RIDGES, 2 x 6 RAFTERS AT 16" OC, AND FLAT 2 x 10 VALLEYS (UNO).
- ALL 4 x 4 AND 6 x 6 POSTS TO BE INSTALLED WITH 100 LB CAPACITY UPLIFT CONNECTORS TOP AND BOTTOM (UNO). POSTS MAY BE SECURED USING ONE SIMPSON H6 OR L157 UPLIFT CONNECTOR FASTENED TO THE BAND AT THE BOTTOM AND THE BEAM AT THE TOP OF EACH POST. ONE 16" SECTION OF SIMPSON C586 COLL STRAPPING WITH (8) 8d HDG NAILS AT EACH END MAY BE USED IN LIEU OF EACH TIGHT STRAP IF DESIRED. FOR MASONRY OR CONCRETE FOUNDATION USE SIMPSON POST BASE.



**J.S. THOMPSON ENGINEERING, INC.**  
 605 W. HARRIS STREET, SUITE 100  
 WAKE FOREST, NC 27158  
 PHONE: (919) 789-9991 FAX: (919) 789-9921  
 N.C. LICENSE NO. C-1131

**120 MPH - 1-30 MPH ULTIMATE DESIGN WIND SPEED  
 STANDARD STRUCTURAL NOTES**

DATE: NOVEMBER 14, 2018
SCALE: 1/8" = 1'-0"
DRAWN BY: JES
ENGINEERED BY: JST

S0  
 STRUCTURAL  
 NOTES