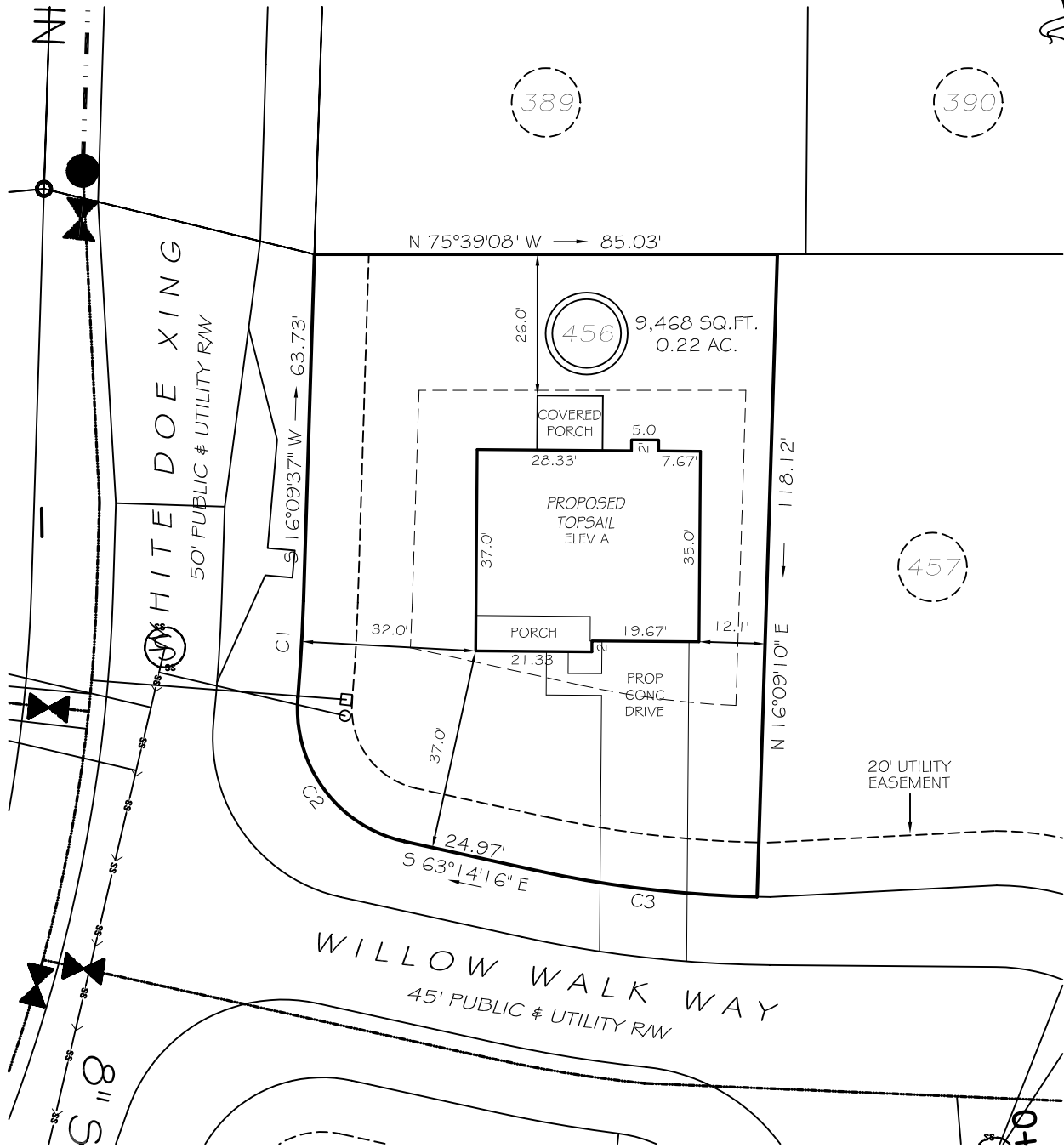


I, MICHAEL P. GRIFFIN, certify that under my direction and supervision this map was drawn from an actual field survey; that the error of closure of the survey as calculated by coordinates is 1: 10,000+; that the area shown hereon was calculated by coordinates.

Witness my hand and seal this day of MONTH 2024.

BK 2024 F09 159-160  
HARNETT CO. REGISTER



20' UTILITY EASEMENT

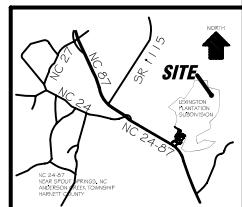
**SETBACKS**

FRONT	35'
REAR	25'
SIDE (ONE SIDE)	5'
SIDE (ONE SIDE)	10'
CORNER SIDE	20'

C1 R=335.00' L=17.70' S17°40'00"W 17.70'  
C2 R=25.00' L=35.96' N22°01'44"W 32.94'  
C3 R=207.50' L=40.78' N68°52'04"W 40.71'

**LEGEND**

EIP	EXISTING IRON PIPE	FES	FLARED END SECTION
IPS	IRON PIPE SET	WM	WATER METER
R/W	RIGHT OF WAY	CO	CLEAN OUT
N/F	NOW OR FORMERLY	FH	FIRE HYDRANT
EIS	EXISTING IRON STAKE	CB	CATCH BASIN



**P R E L I M I N A R Y**  
NOT FOR RECORDATION,  
SALES OR CONVEYANCE

**GLS** GRIFFIN LAND SURVEYING, INC.  
P.O. BOX 148  
FUQUAY-VARINA, NC 27526  
(919) - 567-1963

**PLOT PLAN**  
FOR  
**DREAM FINDERS HOMES, LLC**  
**LEXINGTON PLANTATION**  
**LOT 456**  
WILLOW WALK WAY  
NORTH CAROLINA  
HARNETT COUNTY ANDERSON CREEK TOWNSHIP

DRAWN BY <b>KDF</b>	DATE <b>5/2/24</b>
CHECKED BY <b>MPG</b>	SCALE <b>1" = 30'</b>