

Truss Connector Total List		
Manuf	Product	Qty
	HTU26	9
Simpson	LUS24	7

Products				
PlotID	Length	Product	Plies	Net Qty
BM-1	8' 0"	1-3/4" x 9-1/2" VERSA-LAM@ 2.0 3100 SP	2	2

▲ = LEFT END OF TRUSS

REVISIONS:



Moncks Corner/Easley, SC (800) 475-3999
Sparta, NC (336) 372-2226

FOR PERMIT

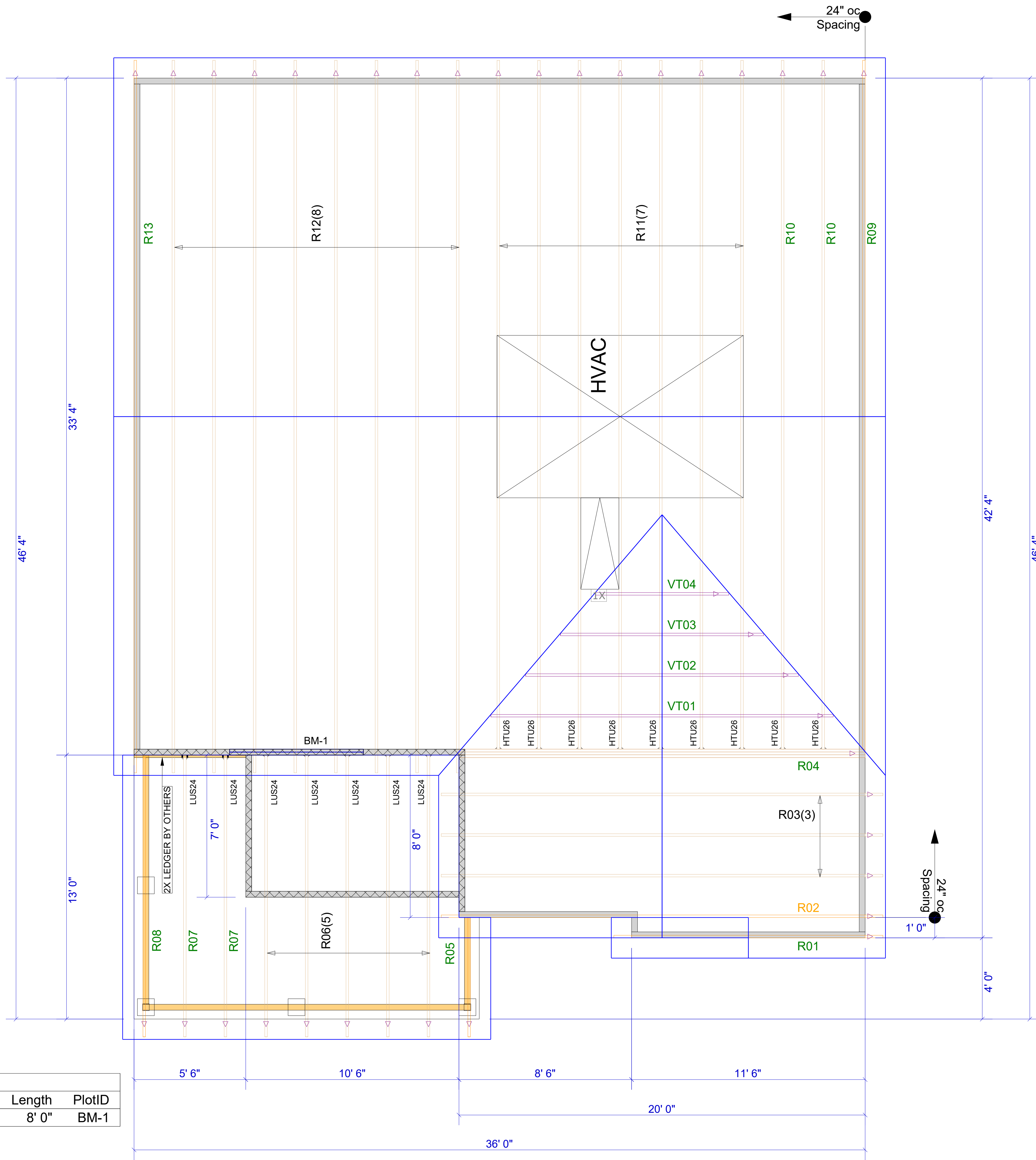
Client:	MATTAMY HOMES-RALEIGH
Job:	LOT 2 PROVIDENCE CREEK
Plan Information:	REDWOOD-FH
NOT TO SCALE	Date: 04/24/24
Drawn By: MBB	Job #: Sales Rep: KYLE GIBSON
	24-3770-R01 Phone:

ROOF

WARNING! Long span trusses, 60' or greater in length, require extreme care and experience for proper and safe handling and installation. For general handling and installation guidance, see the "Guide to Good Practice for Handling, Installing, Restraining & Bracing of Metal Plate Connected Wood Trusses ("BCSI"), JOINTLY PRODUCED BY SBCA and TPI. For project specific guidance, consult with a registered design professional. ATLANTIC assumes no responsibility for the handling, installation or bracing of trusses.

Net Qty	Plies	Product	Length	PlotID
2	2	1-3/4" x 9-1/2" VERSA-LAM® 2.0 3100 SP	8' 0"	BM-1

Truss Connector Total List		
Qty	Product	Manuf
9	HTU26	
7	LUS24	Simpson



▲ = LEFT END OF TRUSS

REVISIONS:



Moncks Corner/Easley, SC (800) 475-3999
Sparta, NC (336) 372-2226

FOR PERMIT

Client:	MATTAMY HOMES-RALEIGH
Job:	LOT 2 PROVIDENCE CREEK
Plan Information:	REDWOOD-FH
NOT TO SCALE	Date: 04/24/24
Drawn By: MBB	Job #: 24-3770-R01
	Sales Rep: KYLE GIBSON
	Phone: 24-3770-R01

ROOF

WARNING! Long span trusses, 60' or greater in length, require extreme care and experience for proper and safe handling and installation. For general handling and installation guidance, see the "Guide to Good Practice for Handling, Installing, Restraining & Bracing of Metal Plate Connected Wood Trusses ("BCSI"), JOINTLY PRODUCED BY SBCA and TPI. For project specific guidance, consult with a registered design professional. ATLANTIC assumes no responsibility for the handling, installation or bracing of trusses.