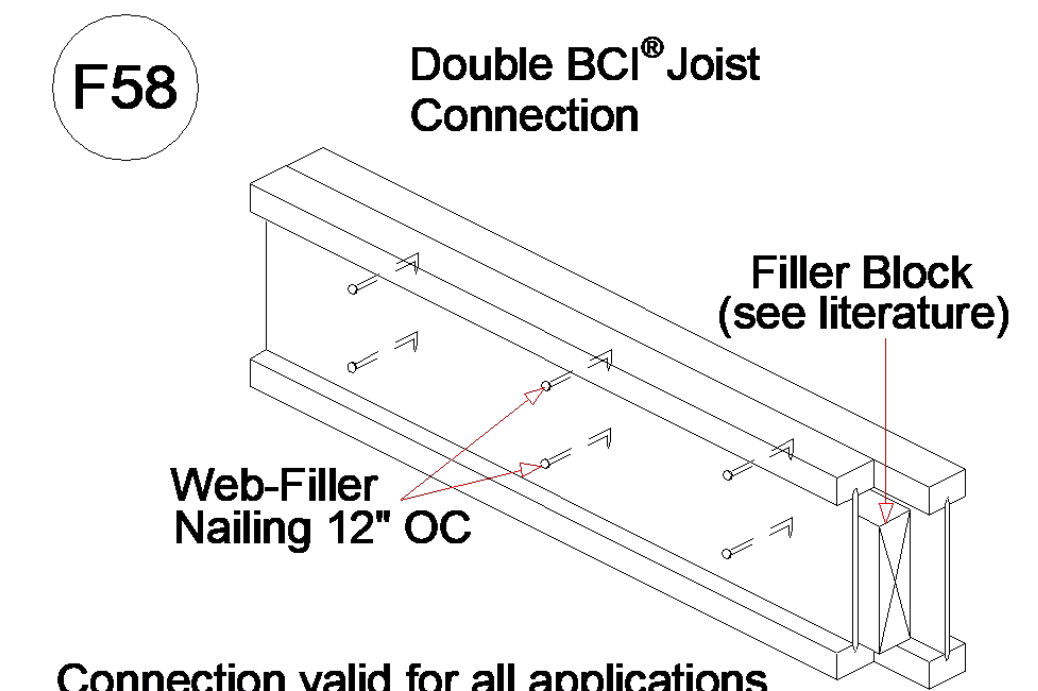


Products				
PlotID	Length	Product	Plies	Net Qty
J2-1	36-0-0	14" BCI® 6000s-1.8	1	7
J2-2	21-0-0	14" BCI® 6000s-1.8	1	3
J2-3	20-0-0	14" BCI® 6000s-1.8	1	4
J2-4	20-0-0	14" BCI® 6000s-1.8	2	4
J2-5	18-0-0	14" BCI® 6000s-1.8	1	7
J2-6	18-0-0	14" BCI® 6000s-1.8	2	2
J2-7	17-0-0	14" BCI® 6000s-1.8	1	13
J2-8	12-0-0	14" BCI® 6000s-1.8	1	3
J2-9	9-0-0	14" BCI® 6000s-1.8	1	1
J2-10	5-0-0	14" BCI® 6000s-1.8	1	3
J2-11	4-0-0	14" BCI® 6000s-1.8	1	11
BM2-1	10-0-0	1-3/4" x 11-7/8" VERSA-LAM® 2.0 3100 SP	2	2
BM2-2	20-0-0	1-3/4" x 14" VERSA-LAM® 2.0 3100 SP	2	2
BM2-3	12-0-0	1-3/4" x 14" VERSA-LAM® 2.0 3100 SP	2	4
BM2-4	8-0-0	1-3/4" x 14" VERSA-LAM® 2.0 3100 SP	2	2
Rim1	12-0-0	1-1/8" x 14" BC RIM BOARD OSB	1	16
Blk1	2-0-0	14" BLOCKING	1	24

Connector Summary			
Qty	Manuf	Product	Flange
21	Simpson	IUS2.37/14	None

Backer blocks are required for all hangers supported by I-Joists.



Connection valid for all applications. Contact Boise EWP Engineering for specific conditions.

**FOR PERMIT**

Client: **MATTAMY HOMES-RALEIGH**  
 Job: **LOT 2 PROVIDENCE CREEK**  
 Plan Information: **REDWOOD-FH**

NOT TO SCALE  
 Drawn By: MBB  
 Date: 04/24/24  
 Job #: Sales Rep: KYLE GIBSON  
 24-3770-J02 Phone: 843-729-3249

▲ = LEFT END OF TRUSS

REVISIONS:

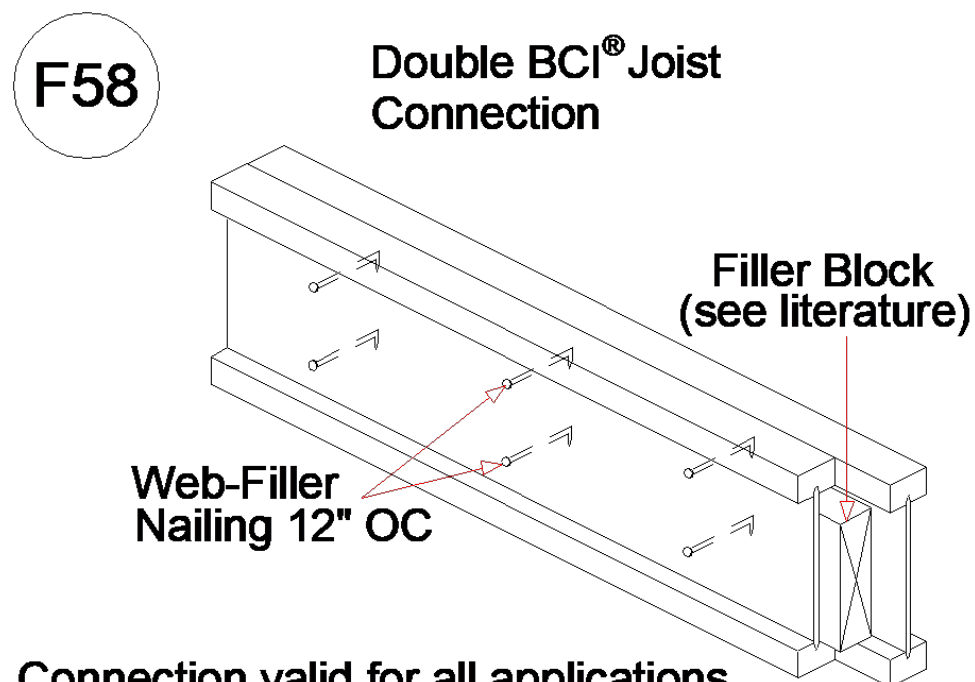


Moncks Corner/Easley, SC (800) 475-3999  
 Sparta, NC (336) 372-2226

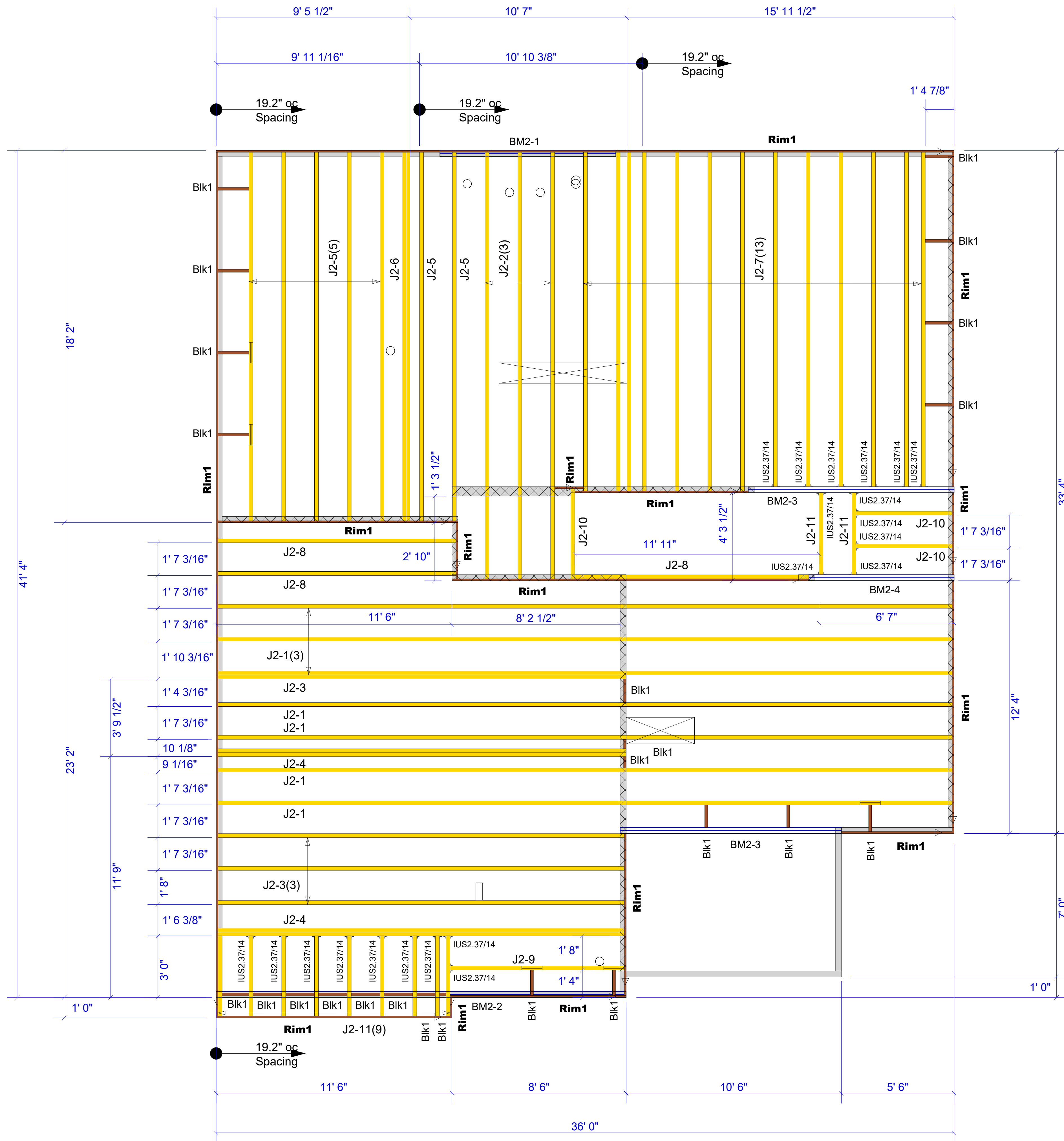
Products					
Net Qty	Plies	Product	Length	PlotID	
7	1	14" BCI® 6000s-1.8	36-0-0	J2-1	
3	1	14" BCI® 6000s-1.8	21-0-0	J2-2	
4	1	14" BCI® 6000s-1.8	20-0-0	J2-3	
4	2	14" BCI® 6000s-1.8	20-0-0	J2-4	
7	1	14" BCI® 6000s-1.8	18-0-0	J2-5	
2	2	14" BCI® 6000s-1.8	18-0-0	J2-6	
13	1	14" BCI® 6000s-1.8	17-0-0	J2-7	
3	1	14" BCI® 6000s-1.8	12-0-0	J2-8	
1	1	14" BCI® 6000s-1.8	9-0-0	J2-9	
3	1	14" BCI® 6000s-1.8	5-0-0	J2-10	
11	1	14" BCI® 6000s-1.8	4-0-0	J2-11	
2	2	1-3/4" x 11-7/8" VERSA-LAM® 2.0 3100 SP	10-0-0	BM2-1	
2	2	1-3/4" x 14" VERSA-LAM® 2.0 3100 SP	20-0-0	BM2-2	
4	2	1-3/4" x 14" VERSA-LAM® 2.0 3100 SP	12-0-0	BM2-3	
2	2	1-3/4" x 14" VERSA-LAM® 2.0 3100 SP	8-0-0	BM2-4	
16	1	1-1/8" x 14" BC RIM BOARD OSB	12-0-0	Rim1	
24	1	14" BLOCKING	2-0-0	Blk1	

Connector Summary			
Flange	Product	Manuf	Qty
None	IUS2.37/14	Simpson	21

Backer blocks are required for all hangers supported by I-Joists.



Connection valid for all applications. Contact Boise EWP Engineering for specific conditions.



**FOR PERMIT**

Client: **MATTAMY HOMES-RALEIGH**  
 Job: **LOT 2 PROVIDENCE CREEK**  
 Plan Information: **REDWOOD-FH**

NOT TO SCALE  
 Drawn By: MBB  
 Date: 04/24/24  
 Job #: 24-3770-J02  
 Sales Rep: KYLE GIBSON  
 Phone: 843-729-3249

▲ = LEFT END OF TRUSS

REVISIONS:



Moncks Corner/Easley, SC (800) 475-3999  
 Sparta, NC (336) 372-2226