

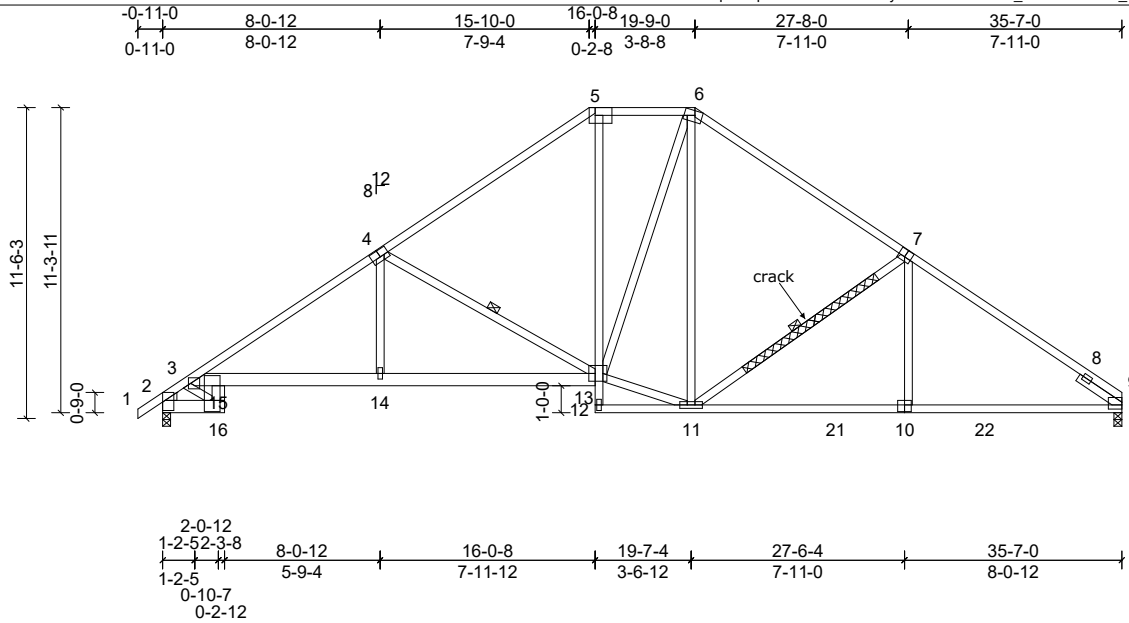
| | | | | | |
|---------------------|-------------|---------------------|----------|----------|---|
| Job 72411171REP2 | Truss A4 | Truss Type Truss | Qty 3 | Ply 1 | HH Hunt\CHATHAM FRMH A RF MR SP 3CG Job Reference (optional) |
|---------------------|-------------|---------------------|----------|----------|---|

UFP Mid Atlantic LLC, 5631 S. NC 62, Burlington, NC, c/m

Run: 8:73 S Jan 4 2024 Print: 8.730 S Jul 24 2024 MiTek Industries, Inc. Tue Aug 20 15:57:19

Page: 1

ID:iqElwApd64bO7I4sPdEntVy6klr-i39k3CAYnfc_LZHUTnNMtiH_C90fkel?5Wx4g4ylwJV



Repair for a crack in the web where indicated.

Attach 2x4 x 6' SP or SPF No.2 scab to each face of truss centered on crack with 2 rows of 10d (.131" x 3") nails spaced 4" oc

Plate Offsets (X, Y): [2:Edge,0-1-1], [3:0-4-0,0-2-8], [4:0-4-0,0-3-0], [5:0-7-8,Edge], [6:0-3-4,0-2-0], [7:0-3-0,0-3-4], [9:Edge,0-3-1], [10:0-3-0,0-3-0], [13:0-2-12,0-3-8], [16:0-5-0,0-3-8]

| Loading | (psf) | Spacing | 2-0-0 | CSI | DEFL | in | (loc) | l/defl | L/d | PLATES | GRIP |
|-------------|-------|-----------------|-----------------|------------|----------|-------|-------|--------|-----|----------------|----------|
| TCLL (roof) | 20.0 | Plate Grip DOL | 1.15 | TC | Vert(LL) | 0.21 | 14-15 | >999 | 240 | M18AHS | 186/179 |
| TCDL | 10.0 | Lumber DOL | 1.15 | BC | Vert(CT) | -0.42 | 14-15 | >999 | 180 | MT20 | 244/190 |
| BCLL | 0.0 * | Rep Stress Incr | YES | WB | Horz(CT) | 0.20 | 9 | n/a | n/a | | |
| BCDL | 10.0 | Code | IRC2015/TPI2014 | Matrix-MSH | | | | | | Weight: 235 lb | FT = 20% |

| LUMBER | | BRACING | |
|-----------|---|-----------|---|
| TOP CHORD | 2x4 SP No.2 *Except* T4:2x4 SP No.1 | TOP CHORD | Structural wood sheathing directly applied, except 2-0-0 oc purlins (4-11-1 max.); 5-6 Rigid ceiling directly applied or 10-0-0 oc bracing, Except: 8-1-14 oc bracing: 14-15 6-0-0 oc bracing: 11-12 1 Row at midpt |
| BOT CHORD | 2x4 SP No.2 *Except* B1:2x6 SP SS, B2:2x4 SP No.3, F1:2x6 SP No.2 | BOT CHORD | |
| WEBS | 2x4 SP No.3 *Except* W2:2x6 SP No.2 | WEBS | |
| WEDGE | Left: 2x4 SP No.2 | | |
| SLIDER | Right 2x4 SP No.3 - 1-11-0 | | |
| REACTIONS | (lb/size) 2=1475/0-3-8, (min. 0-1-12), 9=1430/0-3-8, (min. 0-1-11) Max Horiz 2=284 (LC 7) Max Uplift 2=-189 (LC 10), 9=-168 (LC 11) | | |
| FORCES | (lb) - Max. Comp./Max. Ten. - All forces 250 (lb) or less except when shown. | | |
| TOP CHORD | 2-3=-2028/393, 3-4=-2586/488, 4-5=-1672/428, 5-6=-1275/424, 6-7=-1540/425, 7-8=-2031/414, 8-9=-673/0 | | |
| BOT CHORD | 3-15=-321/2027, 14-15=-335/2123, 13-14=-335/2131, 5-13=-84/579, 11-21=-222/1608, 10-21=-222/1606, 10-22=-223/1606, 9-22=-223/1606, 2-16=-370/1635 | | |
| WEBS | 15-16=-195/963, 4-14=0/582, 4-13=-1017/341, 11-13=0/1144, 6-13=-143/422, 6-11=-134/290, 7-11=-746/291, 7-10=0/345, 3-16=-1947/440 | | |

- NOTES (10)**
- Unbalanced roof live loads have been considered for this design.
 - Wind: ASCE 7-10; Vult=130mph (3-second gust) Vasd=103mph; TC DL=6.0psf; BC DL=6.0psf; h=35ft; Cat. II; Exp B; Enclosed; MWFRS (envelope) exterior zone and C-C Exterior (2) zone; cantilever left and right exposed; end vertical left and right exposed; C-C for members and forces & MWFRS for reactions shown; Lumber DOL=1.60 plate grip DOL=1.60
 - Provide adequate drainage to prevent water ponding.
 - All plates are MT20 plates unless otherwise indicated.
 - This truss has been designed for a 10.0 psf bottom chord live load nonconcurrent with any other live loads.
 - * This truss has been designed for a live load of 20.0psf on the bottom chord in all areas where a rectangle 3-06-00 tall by 2-00-00 wide will fit between the bottom chord and any other members, with BCDL = 10.0psf.
 - Provide mechanical connection (by others) of truss to bearing plate capable of withstanding 189 lb uplift at joint 2 and 168 lb uplift at joint 9.
 - This truss is designed in accordance with the 2015 International Residential Code sections R502.11.1 and R802.10.2 and referenced standard ANSI/TPI 1.
 - Graphical purlin representation does not depict the size or the orientation of the purlin along the top and/or bottom chord.
 - This repair has been prepared based on information and use conditions supplied by client. Designer has made a good faith effort to outline damage and repair conditions as reported by client. When actual field conditions do not approximate those indicated on this drawing, client shall immediately inform the engineer and refrain from applying the repair.



This design is based upon parameters shown, and is for an individual building component to be installed and loaded vertically. Applicability of design parameters and proper incorporation of component is responsibility of the Building Designer. Building Designer shall verify all design information on this sheet for conformance with conditions and requirements of the specific building and governing codes and ordinances. Building Designer accepts responsibility for the correctness or accuracy of the design information as it may relate to a specific building. Certification is valid only when truss is fabricated by a UFPI plant. Bracing shown is for lateral support of truss members only and does not replace erection and permanent bracing. Refer to Building Component Safety Information (BCSI) for general guidance regarding storage, erection and bracing available from SBCA and Truss Plate Institute.