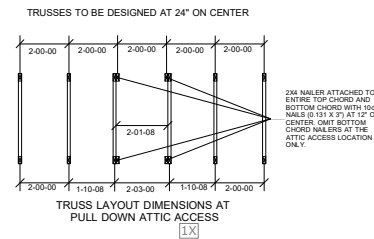
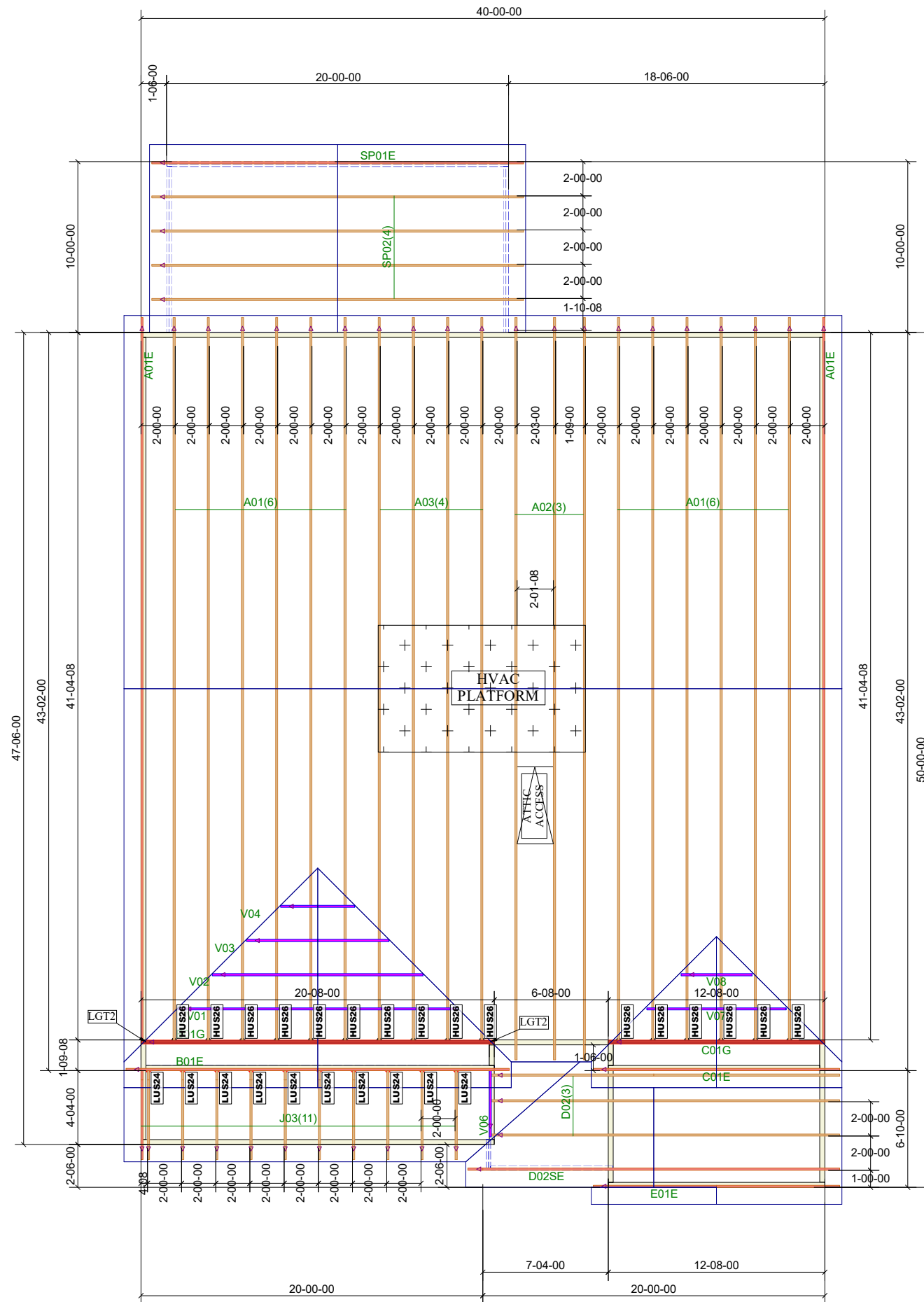


THE PURPOSE OF THIS DETAIL IS TO ILLUSTRATE HOW TO PROPERLY SPACE 24" O.C. ROOF TRUSSES TO ALLOW FOR A 25 1/2" OPENING FOR PULL DOWN ATTIC ACCESS



Truss Connector Total List		
Manuf	Product	Qty
Simpson	HUS26	16
Simpson	LUS24	10



84 Components
200 Emmett Rd
Dunn NC 28334
United States
Office: 770-787-8715

KB HOMES
179 BIRCHWOOD GROVE

179 BIRCHWOOD GROVE

Job# - P01525

Location	2383-Dunn* (Differs)
Designer	INIT

DO NOT CUT, NOTCH, OR BORE HOLES UNLESS SPECIFIC, WRITTEN PERMISSION IS PROVIDED BY AN AUTHORIZED REPRESENTATIVE OF 84 LUMBER.

TRUSS INSTALLATION REQUIRES TEMPORARY AND PERMANENT BRACING. GENERAL GUIDANCE IS PROVIDED IN SBCA DOC'S B-1 and B-3. THESE ARE INCLUDED WITH EACH JOB IN YOUR TRUSS PACKET.

Sheet # **1** of **1**

Roof Truss Placement Plan

NOT TO SCALE

DESIGNED DATE

5/1/2024