

All I-Joist and Versa-Lam Beams  
Must be installed per The  
Boise Cascade Installation Guide!

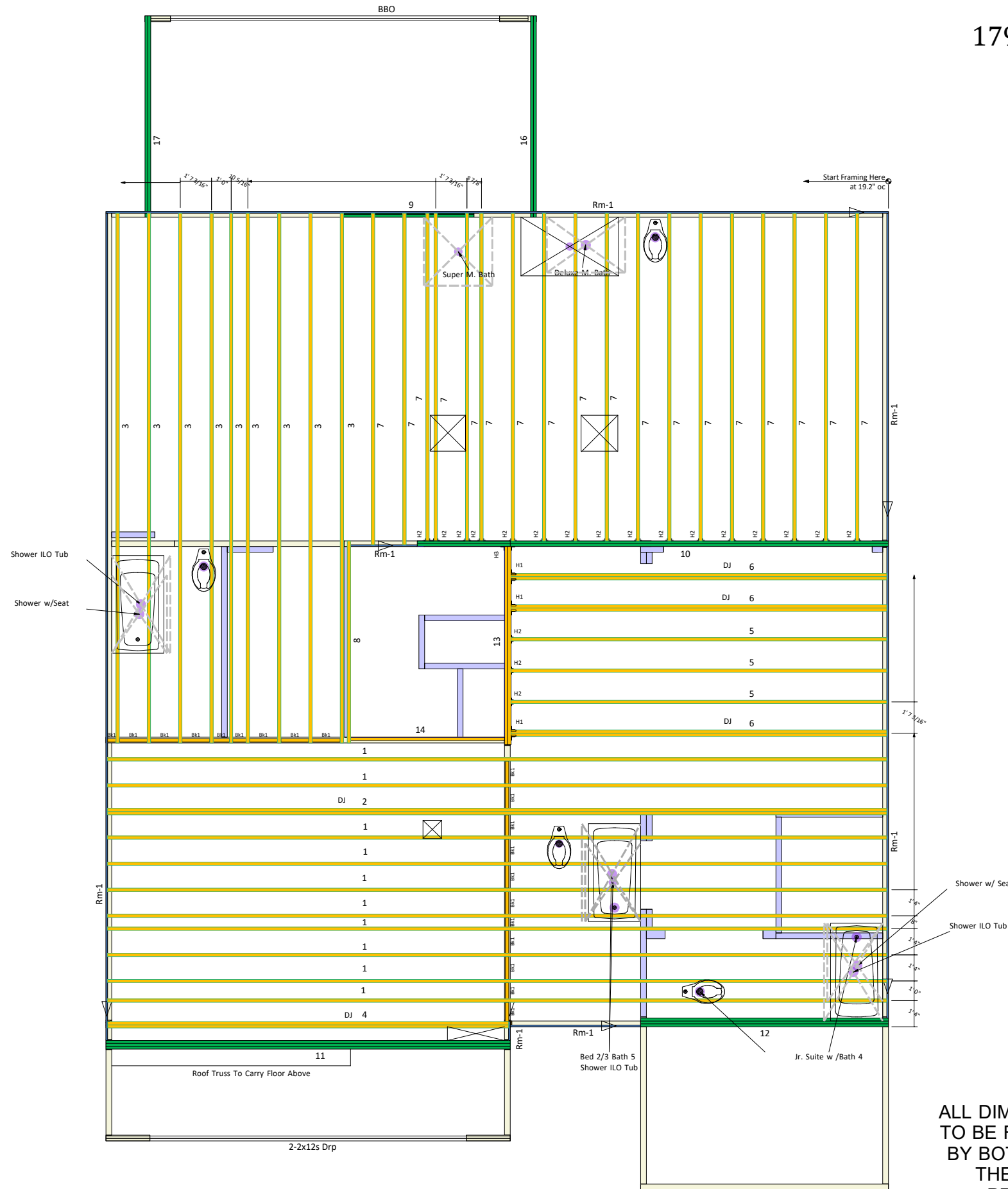
KB Homes  
3174 Elevs B  
179 Birchwood Grove

Revisions:	BY:



Connector Summary			
PlotID	Qty	Manuf	Product
H1	3	Simpson	HU4.12/11
H2	19	Simpson	IUS 2.06/14
H3	1	Simpson	LBV 4.12/14

Products					
PlotID	Length	Product	Plies	Net Qty	Fab Type
1	40' 0"	14" BCI* 5000s-1.8	1	10	MFD
2	40' 0"	14" BCI* 5000s-1.8	2	2	MFD
3	28' 0"	14" BCI* 5000s-1.8	1	9	MFD
4	21' 0"	14" BCI* 5000s-1.8	2	2	MFD
5	20' 0"	14" BCI* 5000s-1.8	1	3	MFD
6	20' 0"	14" BCI* 5000s-1.8	2	6	MFD
7	17' 0"	14" BCI* 5000s-1.8	1	18	MFD
8	11' 0"	14" BCI* 5000s-1.8	1	1	MFD
9	8' 0"	1-3/4" x 9-1/4" VERSA-LAM* 2.0 3100 SP	2	2	MFD
10	26' 0"	1-3/4" x 14" VERSA-LAM* 2.0 3100 SP	2	2	MFD
11	22' 0"	1-3/4" x 14" VERSA-LAM* 2.0 3100 SP	3	3	MFD
12	14' 0"	1-3/4" x 14" VERSA-LAM* 2.0 3100 SP	3	3	MFD
16	12' 0"	1-3/4" x 9-1/4" VERSA-LAM* LVL 2.1E 3100 SP	2	2	MFD
17	12' 0"	1-3/4" x 9-1/4" VERSA-LAM* LVL 2.1E 3100 SP	2	2	MFD
13	11' 0"	14" BCI* 5000s-1.8	2	2	MFD
14	8' 0"	14" BCI* 5000s-1.8	1	1	MFD
Rm-1	12' 0"	1" x 14" BC RIM BOARD OSB	1	12	MFD
Bk1	1' 5 7/16"	14" BCI* 5000s-1.8	1	20	MFD



Squash Blocks Required  
Under The Ends Of All LVL  
And Point Loads For Load  
Transfer - See Details

ALL DIMENSIONS AND CONDITIONS  
TO BE REVIEWED AND APPROVED  
BY BOTH THE CONTRACTOR AND  
THE ENGINEER OF RECORD  
PRIOR TO INSTALLATION

### Second Floor Layout

SALES PRESENTATION DRAWING  
No structural or dimensional check has been made of this design  
drawings of the building, therefore purchaser is to check and  
approve all dimensions, quantities, loads, and details carefully.  
This drawing has not been checked by Boise Engineering.

KB Homes  
3174 Elevs B  
179 Birchwood Grove  
84 Lumber EWP

BC FRAMER II
Plan Date: 07312018
Structural Date: 07062018
By: JP National
Sheet: 2/4