

GENERAL NOTES & DESIGN ASSUMPTIONS

ALL DIMENSIONAL DROPPED GIRDERS NOT INCLUDED W EWP PACKAGE

ALL CEILING JOISTS ARE 2x8 SPF #2 SPACING PER IRC (UNO)

ALL RAFTERS ARE 2x8 SPF #2 SPACING PER IRC (UNO)

ALL LOAD HEADERS, NOT SHOWN ON LAYOUT, ARE (2)2x10 SYP #2 (UNO)

ALL 2x4, 2x6 & 2x8 ARE SPF #2 (UNO)

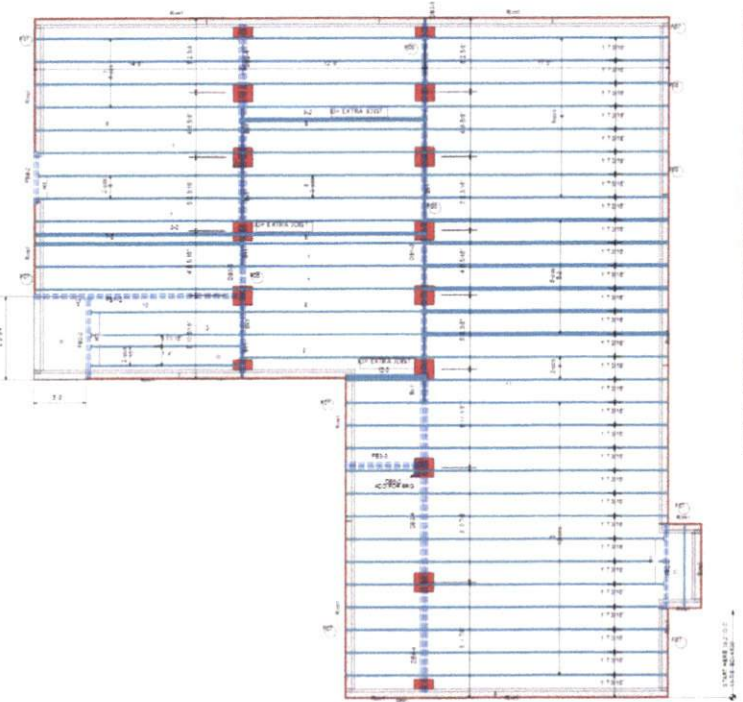
ALL 2x10 & 2x12 JOISTS ARE SYP #2 (UNO)

ALL RIDGES AND HIP RAFTERS ARE 2x10 or 2x12 (UNO)

ALL VALLEY RAFTERS ARE 2x12 (UNO)

NJ = NUMBER OF 2x4 SPF #2 JACK STUDS REQUIRED (LVL POST PT#)

1ST & 2ND FLOOR PLAN PER BUILDERS FIRST SOURCES DESIGN



PROD	Length	Product	Units	Net Qty
1	11'-2"	2x8 SPF #2	15	15
2	11'-2"	2x8 SPF #2	15	15
3	11'-2"	2x8 SPF #2	15	15
4	11'-2"	2x8 SPF #2	15	15
5	11'-2"	2x8 SPF #2	15	15
6	11'-2"	2x8 SPF #2	15	15
7	11'-2"	2x8 SPF #2	15	15
8	11'-2"	2x8 SPF #2	15	15
9	11'-2"	2x8 SPF #2	15	15
10	11'-2"	2x8 SPF #2	15	15
11	11'-2"	2x8 SPF #2	15	15
12	11'-2"	2x8 SPF #2	15	15
13	11'-2"	2x8 SPF #2	15	15
14	11'-2"	2x8 SPF #2	15	15
15	11'-2"	2x8 SPF #2	15	15
16	11'-2"	2x8 SPF #2	15	15
17	11'-2"	2x8 SPF #2	15	15
18	11'-2"	2x8 SPF #2	15	15
19	11'-2"	2x8 SPF #2	15	15
20	11'-2"	2x8 SPF #2	15	15
21	11'-2"	2x8 SPF #2	15	15
22	11'-2"	2x8 SPF #2	15	15
23	11'-2"	2x8 SPF #2	15	15
24	11'-2"	2x8 SPF #2	15	15
25	11'-2"	2x8 SPF #2	15	15
26	11'-2"	2x8 SPF #2	15	15
27	11'-2"	2x8 SPF #2	15	15
28	11'-2"	2x8 SPF #2	15	15
29	11'-2"	2x8 SPF #2	15	15
30	11'-2"	2x8 SPF #2	15	15
31	11'-2"	2x8 SPF #2	15	15
32	11'-2"	2x8 SPF #2	15	15
33	11'-2"	2x8 SPF #2	15	15
34	11'-2"	2x8 SPF #2	15	15
35	11'-2"	2x8 SPF #2	15	15
36	11'-2"	2x8 SPF #2	15	15
37	11'-2"	2x8 SPF #2	15	15
38	11'-2"	2x8 SPF #2	15	15
39	11'-2"	2x8 SPF #2	15	15
40	11'-2"	2x8 SPF #2	15	15
41	11'-2"	2x8 SPF #2	15	15
42	11'-2"	2x8 SPF #2	15	15
43	11'-2"	2x8 SPF #2	15	15
44	11'-2"	2x8 SPF #2	15	15
45	11'-2"	2x8 SPF #2	15	15
46	11'-2"	2x8 SPF #2	15	15
47	11'-2"	2x8 SPF #2	15	15
48	11'-2"	2x8 SPF #2	15	15
49	11'-2"	2x8 SPF #2	15	15
50	11'-2"	2x8 SPF #2	15	15
51	11'-2"	2x8 SPF #2	15	15
52	11'-2"	2x8 SPF #2	15	15
53	11'-2"	2x8 SPF #2	15	15
54	11'-2"	2x8 SPF #2	15	15
55	11'-2"	2x8 SPF #2	15	15
56	11'-2"	2x8 SPF #2	15	15
57	11'-2"	2x8 SPF #2	15	15
58	11'-2"	2x8 SPF #2	15	15
59	11'-2"	2x8 SPF #2	15	15
60	11'-2"	2x8 SPF #2	15	15
61	11'-2"	2x8 SPF #2	15	15
62	11'-2"	2x8 SPF #2	15	15
63	11'-2"	2x8 SPF #2	15	15
64	11'-2"	2x8 SPF #2	15	15
65	11'-2"	2x8 SPF #2	15	15
66	11'-2"	2x8 SPF #2	15	15
67	11'-2"	2x8 SPF #2	15	15
68	11'-2"	2x8 SPF #2	15	15
69	11'-2"	2x8 SPF #2	15	15
70	11'-2"	2x8 SPF #2	15	15
71	11'-2"	2x8 SPF #2	15	15
72	11'-2"	2x8 SPF #2	15	15
73	11'-2"	2x8 SPF #2	15	15
74	11'-2"	2x8 SPF #2	15	15
75	11'-2"	2x8 SPF #2	15	15
76	11'-2"	2x8 SPF #2	15	15
77	11'-2"	2x8 SPF #2	15	15
78	11'-2"	2x8 SPF #2	15	15
79	11'-2"	2x8 SPF #2	15	15
80	11'-2"	2x8 SPF #2	15	15
81	11'-2"	2x8 SPF #2	15	15
82	11'-2"	2x8 SPF #2	15	15
83	11'-2"	2x8 SPF #2	15	15
84	11'-2"	2x8 SPF #2	15	15
85	11'-2"	2x8 SPF #2	15	15
86	11'-2"	2x8 SPF #2	15	15
87	11'-2"	2x8 SPF #2	15	15
88	11'-2"	2x8 SPF #2	15	15
89	11'-2"	2x8 SPF #2	15	15
90	11'-2"	2x8 SPF #2	15	15
91	11'-2"	2x8 SPF #2	15	15
92	11'-2"	2x8 SPF #2	15	15
93	11'-2"	2x8 SPF #2	15	15
94	11'-2"	2x8 SPF #2	15	15
95	11'-2"	2x8 SPF #2	15	15
96	11'-2"	2x8 SPF #2	15	15
97	11'-2"	2x8 SPF #2	15	15
98	11'-2"	2x8 SPF #2	15	15
99	11'-2"	2x8 SPF #2	15	15
100	11'-2"	2x8 SPF #2	15	15

PROD	Length	Product	Units	Net Qty
AS1	11'-2"	2x8 SPF #2	15	15
AS2	11'-2"	2x8 SPF #2	15	15
AS3	11'-2"	2x8 SPF #2	15	15
AS4	11'-2"	2x8 SPF #2	15	15
AS5	11'-2"	2x8 SPF #2	15	15
AS6	11'-2"	2x8 SPF #2	15	15
AS7	11'-2"	2x8 SPF #2	15	15
AS8	11'-2"	2x8 SPF #2	15	15
AS9	11'-2"	2x8 SPF #2	15	15
AS10	11'-2"	2x8 SPF #2	15	15
AS11	11'-2"	2x8 SPF #2	15	15
AS12	11'-2"	2x8 SPF #2	15	15
AS13	11'-2"	2x8 SPF #2	15	15
AS14	11'-2"	2x8 SPF #2	15	15
AS15	11'-2"	2x8 SPF #2	15	15
AS16	11'-2"	2x8 SPF #2	15	15
AS17	11'-2"	2x8 SPF #2	15	15
AS18	11'-2"	2x8 SPF #2	15	15
AS19	11'-2"	2x8 SPF #2	15	15
AS20	11'-2"	2x8 SPF #2	15	15
AS21	11'-2"	2x8 SPF #2	15	15
AS22	11'-2"	2x8 SPF #2	15	15
AS23	11'-2"	2x8 SPF #2	15	15
AS24	11'-2"	2x8 SPF #2	15	15
AS25	11'-2"	2x8 SPF #2	15	15
AS26	11'-2"	2x8 SPF #2	15	15
AS27	11'-2"	2x8 SPF #2	15	15
AS28	11'-2"	2x8 SPF #2	15	15
AS29	11'-2"	2x8 SPF #2	15	15
AS30	11'-2"	2x8 SPF #2	15	15
AS31	11'-2"	2x8 SPF #2	15	15
AS32	11'-2"	2x8 SPF #2	15	15
AS33	11'-2"	2x8 SPF #2	15	15
AS34	11'-2"	2x8 SPF #2	15	15
AS35	11'-2"	2x8 SPF #2	15	15
AS36	11'-2"	2x8 SPF #2	15	15
AS37	11'-2"	2x8 SPF #2	15	15
AS38	11'-2"	2x8 SPF #2	15	15
AS39	11'-2"	2x8 SPF #2	15	15
AS40	11'-2"	2x8 SPF #2	15	15
AS41	11'-2"	2x8 SPF #2	15	15
AS42	11'-2"	2x8 SPF #2	15	15
AS43	11'-2"	2x8 SPF #2	15	15
AS44	11'-2"	2x8 SPF #2	15	15
AS45	11'-2"	2x8 SPF #2	15	15
AS46	11'-2"	2x8 SPF #2	15	15
AS47	11'-2"	2x8 SPF #2	15	15
AS48	11'-2"	2x8 SPF #2	15	15
AS49	11'-2"	2x8 SPF #2	15	15
AS50	11'-2"	2x8 SPF #2	15	15

Joist & Rafter Area Loads	Live Load psf	Dead Load psf
Primary Living	40	10
Secondary & Attic Permanent Stairs	30	10
Ceiling - Limited Storage	20	10
Ceiling - No Storage	10	5
Roof - No Ceiling Load	20	10
Flat Roof or Cathedral w/Drywall Ceiling	20	15

Builders FirstSource
www.bfs.com

17601 BOEING DRIVE
GREENSBORO, NC 27409
V (336) 894-4454

8875 FAUBOURG ROAD
CLEMONS, NC 27409
V (336) 712-9910

1135 ROBESON STREET
FAYETTEVILLE, NC 28405
V (910) 485-1111

3186 NC HIGHWAY 5
ABERDEEN, NC 28315
V (610) 944-2878

This layout and associated materials list has been prepared based on project plans and/or information provided to Builders FirstSource (BFS). It remains the responsibility of the builder, architect, designer, or other responsible persons to review this information to assure that it is appropriate, accurate, complete and conforms with applicable building codes.

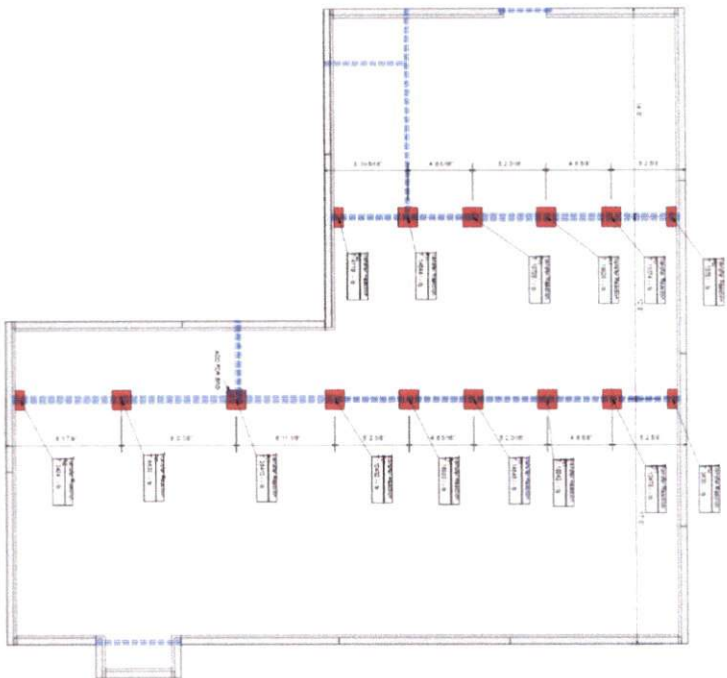
GENERAL NOTES:
1. READ THE INSTALLATION INSTRUCTIONS BEFORE FRAMING.
2. ALL DIMENSIONS ARE TO FACE UNLESS OTHERWISE NOTED.
3. OTHERS' WALLS NOT SHOWN ARE CONSIDERED PERMANENT.
4. MINIMUM HEADROOM SHALL BE MAINTAINED THROUGHOUT THE ENTIRE PROJECT.
5. BRACE CEMENT BLOCK WALLS SUPPORTED BY FOUNDATION.
6. VERIFY ALL DIMENSIONS BEFORE MAKING ANY ALTERATIONS OR ADJUSTMENTS. FAILURE TO DO SO MAY RESULT IN COSTLY REPAIRS.

Raul Garcia
Hoover Road
FIRST SOURCE PROJECT NUMBER
BUILDERS FIRSTSOURCE, CENTRAL CAROLINA MARKETS
DRAWN BY: LORIAN MARR
DATE: 4/10/24
JOB NUMBER: 240110
SCALE: 1/4" = 1'

MINIMUM DESIGN DATA
LIVE LOAD 40 PSF
DEAD LOAD 10 PSF
TOTAL LOAD 50 PSF
DOL = 100%
DEFLECTION CRITERIA LAMB (MINIMUM)
ARCHITECTURAL PLAN DATE XX-XX-XX
REVISED ARCH. PLAN DATE XX-XX-XX
Sheet 2 of 4

The layout and associated dimensions has been prepared based on project data. Builders FirstSource (BFS) is not responsible for the accuracy of the information provided by the other responsible persons to whom the information is being provided. BFS is not responsible for the accuracy of the information provided by the other responsible persons to whom the information is being provided. BFS is not responsible for the accuracy of the information provided by the other responsible persons to whom the information is being provided.

- GENERAL NOTES:**
- 1) READ THE INSTALLATION GUIDE BEFORE FRAMING
 - 2) ALL WALLS SHOWN ARE LOAD BEARING UNLESS NOTED OTHERWISE. WALLS NOT SHOWN ARE CONSIDERED NON-LOAD BEARING
 - 3) UNLESS STATED OTHERWISE ALL CEILING & ROOF LOADS SHALL BE DIRECTLY TO LOAD BEARING WALLS SUPPORTED BY FOUNDATION.
 - 4) CONTACT BUILDERS FIRSTSOURCE BEFORE MAKING ANY ALTERATIONS OR ADJUSTMENTS. FAILURE TO DO SO MAY RESULT IN COSTLY REPAIRS.

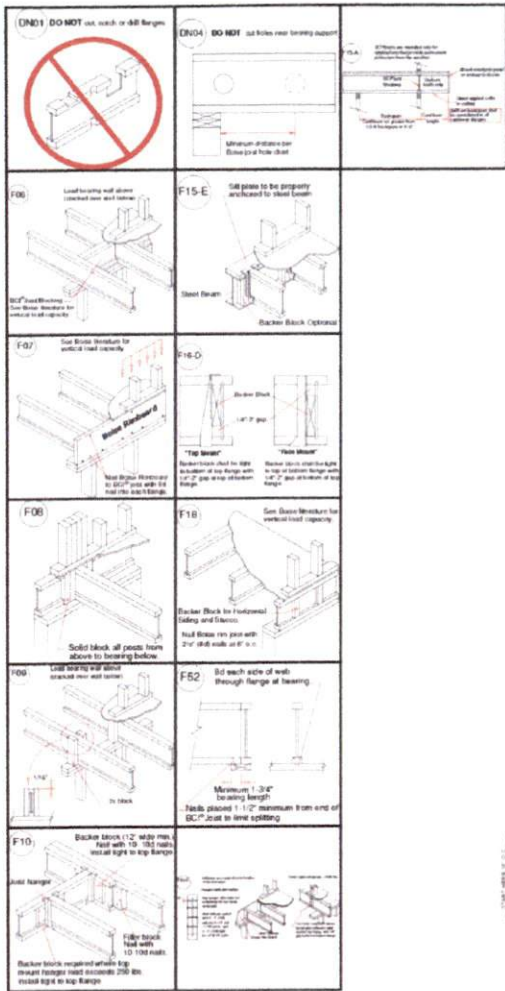


GENERAL NOTES & DESIGN ASSUMPTIONS
ALL DIMENSIONAL LUMBER-DROPPED GRIDERS ARE NOT INCLUDED WITH THE EWP PACKAGE AND NEED TO BE ORDERED BY CONTRACTOR

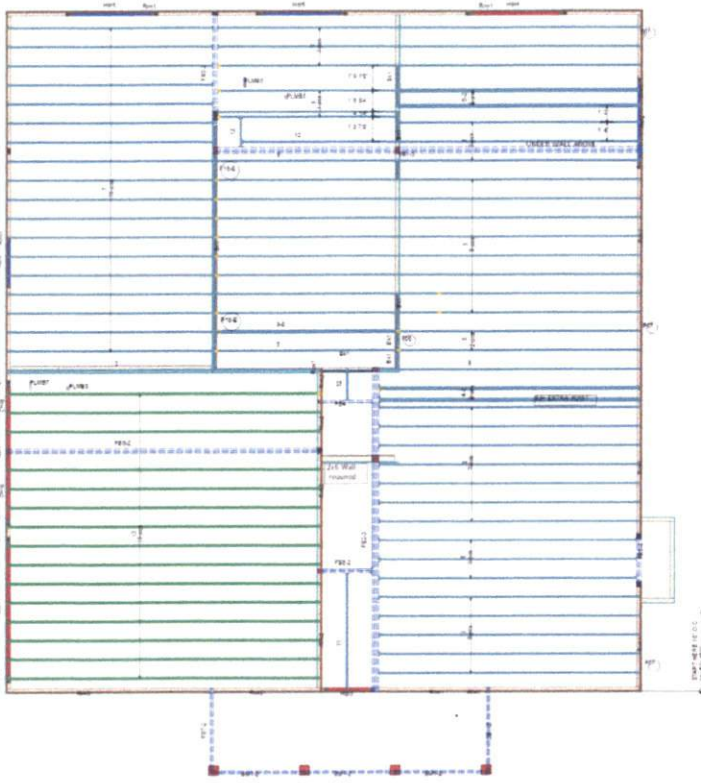
LOADING AT	FOOTING SIZE	MINIMUM FOUNDATION RECOMMENDATIONS	REINFORCEMENT
0 - 2,500	24" x 24" x 8"	8" x 16"	No. Rebar
2,500 - 12,000	32" x 32" x 10"	10" x 16"	No. Rebar
12,000 - 17,000	40" x 36" x 10"	10" x 16"	No. Rebar
17,000 - 21,000	40" x 36" x 12"	12" x 16"	No. Rebar
21,000 - 30,000	48" x 48" x 12"	12" x 16"	No. Rebar

Raul Garcia
Hoover Road
FOUNDATION PER-PLACEMENT PLAN
DRAWN BY: Lorena Maga DATE: 4/10/2024
SCALE: 1/4" = 1' JOB NUMBER: 384910

MINIMUM DESIGN DATA
LIVE LOAD: 40 PSF
DEAD LOAD: 10 PSF
TOTAL LOAD: 50 PSF
DOOR: 1200"
CEILING: 800"
WIND: 120 MPH
REVISIONS: NONE
SHEET: 1 OF 5



GENERAL NOTES & DESIGN ASSUMPTIONS
 ALL DIMENSIONAL DROPPED GIRDERS NOT INCLUDED W EWP PACKAGE
 ALL CEILING JOISTS ARE 2x8 SPF #2 SPACING PER IRC (UNO)
 ALL RAFTERS ARE 2x8 SPF #2 SPACING PER IRC (UNO)
 ALL LOAD HEADERS, NOT SHOWN ON LAYOUT, ARE (2)2x10 SYP #2 (UNO)
 ALL 2x4, 2x6 & 2x8 ARE SPF #2 (UNO)
 ALL 2x10 & 2x12 JOISTS ARE SYP #2 (UNO)
 ALL RIDGES AND HIP RAFTERS ARE 2x10 or 2x12 (UNO)
 ALL VALLEY RAFTERS ARE 2x12 (UNO)
 #J = NUMBER OF 2x4 SPF #2 JACK STUDS REQUIRED (LVL POST PT#)



1ST & 2ND FLOOR PLAN PER BUILDERS FIRST SOURCES DESIGN

Joist & Rafter Area Loads	Live Load psf	Dead Load psf
Primary Living	40	10
Secondary & Attic Permanent Stairs	30	10
Ceiling - Limited Storage	20	10
Ceiling - No Storage	10	5
Roof - No Ceiling Load	20	10
Flat Roof or Cathedral w/DrYWall Ceiling	20	15

Item	Length	Product	Pieces	Net Qty
F14-2	8' 0"	1-3/4" x 5-1/4" VERSA-LAMB LVL 2 IE 3100 SP	2	2
F14-3	4' 0"	1-3/4" x 5-1/4" VERSA-LAMB LVL 2 IE 3100 SP	2	2
F14-4	10' 0"	1-3/4" x 11-7/8" VERSA-LAMB LVL 2 IE 3100 SP	2	4
F14-5	8' 0"	2x10 SP No 2	2	2
F14-6	8' 0"	2x10 SP No 2	2	2
F14-8	4' 0"	2x10 SP No 2	2	2

Item	Length	Product	Pieces	Net Qty
F1	10' 0"	1" x 12" BCI-RM BOARD OSB	1	1
F2	20' 0"	1" x 12" BCI-RM BOARD OSB	1	1
F3	20' 0"	1" x 12" BCI-RM BOARD OSB	1	1
F4	8' 0"	1" x 12" BCI-RM BOARD OSB	1	1
F5	8' 0"	1" x 12" BCI-RM BOARD OSB	1	1
F6	14' 0"	1" x 12" BCI-RM BOARD OSB	1	1
F7	14' 0"	1" x 12" BCI-RM BOARD OSB	1	1
F8	14' 0"	1" x 12" BCI-RM BOARD OSB	1	1
F9	14' 0"	1" x 12" BCI-RM BOARD OSB	1	1
F10	14' 0"	1" x 12" BCI-RM BOARD OSB	1	1
F11	22' 0"	1" x 12" BCI-RM BOARD OSB	1	1
F12	22' 0"	1" x 12" BCI-RM BOARD OSB	1	1
F13	22' 0"	1" x 12" BCI-RM BOARD OSB	1	1
F14	22' 0"	1" x 12" BCI-RM BOARD OSB	1	1
F15	22' 0"	1" x 12" BCI-RM BOARD OSB	1	1
F16	22' 0"	1" x 12" BCI-RM BOARD OSB	1	1
F17	22' 0"	1" x 12" BCI-RM BOARD OSB	1	1
F18	22' 0"	1" x 12" BCI-RM BOARD OSB	1	1
F19	22' 0"	1" x 12" BCI-RM BOARD OSB	1	1
F20	22' 0"	1" x 12" BCI-RM BOARD OSB	1	1
F21	22' 0"	1" x 12" BCI-RM BOARD OSB	1	1
F22	22' 0"	1" x 12" BCI-RM BOARD OSB	1	1
F23	22' 0"	1" x 12" BCI-RM BOARD OSB	1	1
F24	22' 0"	1" x 12" BCI-RM BOARD OSB	1	1
F25	22' 0"	1" x 12" BCI-RM BOARD OSB	1	1
F26	22' 0"	1" x 12" BCI-RM BOARD OSB	1	1
F27	22' 0"	1" x 12" BCI-RM BOARD OSB	1	1
F28	22' 0"	1" x 12" BCI-RM BOARD OSB	1	1
F29	22' 0"	1" x 12" BCI-RM BOARD OSB	1	1
F30	22' 0"	1" x 12" BCI-RM BOARD OSB	1	1
F31	22' 0"	1" x 12" BCI-RM BOARD OSB	1	1
F32	22' 0"	1" x 12" BCI-RM BOARD OSB	1	1
F33	22' 0"	1" x 12" BCI-RM BOARD OSB	1	1
F34	22' 0"	1" x 12" BCI-RM BOARD OSB	1	1
F35	22' 0"	1" x 12" BCI-RM BOARD OSB	1	1
F36	22' 0"	1" x 12" BCI-RM BOARD OSB	1	1
F37	22' 0"	1" x 12" BCI-RM BOARD OSB	1	1
F38	22' 0"	1" x 12" BCI-RM BOARD OSB	1	1
F39	22' 0"	1" x 12" BCI-RM BOARD OSB	1	1
F40	22' 0"	1" x 12" BCI-RM BOARD OSB	1	1
F41	22' 0"	1" x 12" BCI-RM BOARD OSB	1	1
F42	22' 0"	1" x 12" BCI-RM BOARD OSB	1	1
F43	22' 0"	1" x 12" BCI-RM BOARD OSB	1	1
F44	22' 0"	1" x 12" BCI-RM BOARD OSB	1	1
F45	22' 0"	1" x 12" BCI-RM BOARD OSB	1	1
F46	22' 0"	1" x 12" BCI-RM BOARD OSB	1	1
F47	22' 0"	1" x 12" BCI-RM BOARD OSB	1	1
F48	22' 0"	1" x 12" BCI-RM BOARD OSB	1	1
F49	22' 0"	1" x 12" BCI-RM BOARD OSB	1	1
F50	22' 0"	1" x 12" BCI-RM BOARD OSB	1	1
F51	22' 0"	1" x 12" BCI-RM BOARD OSB	1	1
F52	22' 0"	1" x 12" BCI-RM BOARD OSB	1	1
F53	22' 0"	1" x 12" BCI-RM BOARD OSB	1	1
F54	22' 0"	1" x 12" BCI-RM BOARD OSB	1	1
F55	22' 0"	1" x 12" BCI-RM BOARD OSB	1	1
F56	22' 0"	1" x 12" BCI-RM BOARD OSB	1	1
F57	22' 0"	1" x 12" BCI-RM BOARD OSB	1	1
F58	22' 0"	1" x 12" BCI-RM BOARD OSB	1	1
F59	22' 0"	1" x 12" BCI-RM BOARD OSB	1	1
F60	22' 0"	1" x 12" BCI-RM BOARD OSB	1	1
F61	22' 0"	1" x 12" BCI-RM BOARD OSB	1	1
F62	22' 0"	1" x 12" BCI-RM BOARD OSB	1	1
F63	22' 0"	1" x 12" BCI-RM BOARD OSB	1	1
F64	22' 0"	1" x 12" BCI-RM BOARD OSB	1	1
F65	22' 0"	1" x 12" BCI-RM BOARD OSB	1	1
F66	22' 0"	1" x 12" BCI-RM BOARD OSB	1	1
F67	22' 0"	1" x 12" BCI-RM BOARD OSB	1	1
F68	22' 0"	1" x 12" BCI-RM BOARD OSB	1	1
F69	22' 0"	1" x 12" BCI-RM BOARD OSB	1	1
F70	22' 0"	1" x 12" BCI-RM BOARD OSB	1	1
F71	22' 0"	1" x 12" BCI-RM BOARD OSB	1	1
F72	22' 0"	1" x 12" BCI-RM BOARD OSB	1	1
F73	22' 0"	1" x 12" BCI-RM BOARD OSB	1	1
F74	22' 0"	1" x 12" BCI-RM BOARD OSB	1	1
F75	22' 0"	1" x 12" BCI-RM BOARD OSB	1	1
F76	22' 0"	1" x 12" BCI-RM BOARD OSB	1	1
F77	22' 0"	1" x 12" BCI-RM BOARD OSB	1	1
F78	22' 0"	1" x 12" BCI-RM BOARD OSB	1	1
F79	22' 0"	1" x 12" BCI-RM BOARD OSB	1	1
F80	22' 0"	1" x 12" BCI-RM BOARD OSB	1	1
F81	22' 0"	1" x 12" BCI-RM BOARD OSB	1	1
F82	22' 0"	1" x 12" BCI-RM BOARD OSB	1	1
F83	22' 0"	1" x 12" BCI-RM BOARD OSB	1	1
F84	22' 0"	1" x 12" BCI-RM BOARD OSB	1	1
F85	22' 0"	1" x 12" BCI-RM BOARD OSB	1	1
F86	22' 0"	1" x 12" BCI-RM BOARD OSB	1	1
F87	22' 0"	1" x 12" BCI-RM BOARD OSB	1	1
F88	22' 0"	1" x 12" BCI-RM BOARD OSB	1	1
F89	22' 0"	1" x 12" BCI-RM BOARD OSB	1	1
F90	22' 0"	1" x 12" BCI-RM BOARD OSB	1	1
F91	22' 0"	1" x 12" BCI-RM BOARD OSB	1	1
F92	22' 0"	1" x 12" BCI-RM BOARD OSB	1	1
F93	22' 0"	1" x 12" BCI-RM BOARD OSB	1	1
F94	22' 0"	1" x 12" BCI-RM BOARD OSB	1	1
F95	22' 0"	1" x 12" BCI-RM BOARD OSB	1	1
F96	22' 0"	1" x 12" BCI-RM BOARD OSB	1	1
F97	22' 0"	1" x 12" BCI-RM BOARD OSB	1	1
F98	22' 0"	1" x 12" BCI-RM BOARD OSB	1	1
F99	22' 0"	1" x 12" BCI-RM BOARD OSB	1	1
F100	22' 0"	1" x 12" BCI-RM BOARD OSB	1	1

Item	Qty	Product
H1	2	Simpson 18L25410
H2	3	Simpson HU14
H3	32	Simpson JUS18114
H4	1	Simpson JUS25814

Item	Length	Product	Pieces	Net Qty
Rm1	12' 0"	1" x 14" BCI-RM BOARD OSB	1	1
Rm2	12' 0"	1" x 14" BCI-RM BOARD OSB	1	1
Rm3	28' 0"	1" x 14" BCI-RM BOARD OSB	1	1

Builders FirstSource
 www.bfs.com
 One Casselle
 7601 BOENIG DRIVE
 GREENSBORO, NC 27409
 V (336) 884-5454
 4575 HAMPTON ROAD
 CLEMONS, NC 27409
 V (336) 712-9910
 1133 ROBESON STREET
 FAYETTEVILLE, NC 28305
 V (910) 485-1111
 3186 NC HIGHWAY 5
 ABERDEEN, NC 28315
 V (910) 944-2636

The layout and associated materials list has been prepared based on project plans and/or information provided to Builders FirstSource (BFS). It remains the responsibility of the builder, architect, designer or other responsible persons to review this information to ensure that it is appropriate, accurate, complete and complies with applicable building codes.

- GENERAL NOTES:**
1. READ THE INSTALLATION INSTRUCTIONS BEFORE FRAMING.
 2. NON-LOAD BEARING WALLS NOT SHOWN ARE CONSIDERED.
 3. BRIDGE DIRECTLY TO LOAD BEARING WALLS SUPPORTED BY FOUNDATION.
 4. ALTERATIONS OR ADJUSTMENTS BEFORE WORKING MAY RESULT IN COSTLY REPAIRS.

Raul Garcia
 Hoover Road
 second floor improvement
 Builders FirstSource, Central Carolina Markets
 DRAWN BY: LORIANE BARR
 DATE: 8/10/2024
 JOB NUMBER: 284070
 SCALE: 1/8" = 1'

MINIMUM DESIGN DATA
 LIVE LOAD 40 PSF
 DEAD LOAD 10 PSF
 TOTAL LOAD 50 PSF
 DOL = 100%
 DEFLECTION CRITERIA L/480 (MINIMUM)
 ARCHITECTURAL PLAN DATE XX-XX-XX
 REVISED ARCH. PLAN DATE XX-XX-XX
 XXXXXXXX
 Sheet 3 of 4

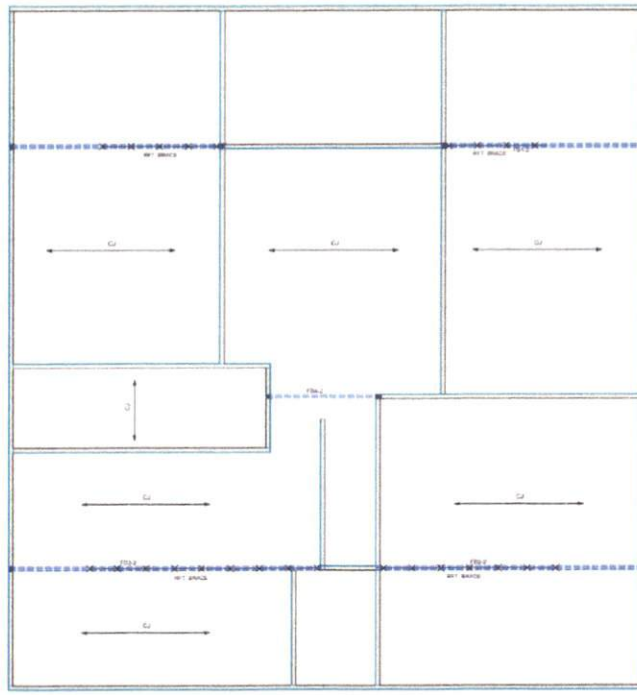
Dona Caserio
 7051 SCENO DRIVE
 GREENSBORO, NC 27409
 V (336) 884-6464

4676 HAMPTON ROAD
 CLEMSON, NC 27408
 V (336) 712-6010

1135 ROBESON STREET
 FAYETTEVILLE, NC 28305
 V (910) 483-1111

3189 NC HIGHWAY 5
 AMERDEEN NC 28315
 V (910) 944-2616

This layout and associated materials list has been prepared based on project plans and/or information provided to Builders FirstSource (BFS). It remains the responsibility of the builder, architect, designer, or other responsible persons to review this information to assure that it is appropriate, accurate, complete and complies with applicable building codes.



PierID	Length	Product	Products	
			Pieces	Net Qty
FBI-2	16' 0"	1-3/4" x 11-7/8" VERSA-LAME LVL 2 1E 3100 SP	2	4
FBI-2	20' 0"	1-3/4" x 14" VERSA-LAME LVL 2 1E 3100 SP	2	2
FBI-2	22' 0"	1-3/4" x 16" VERSA-LAME LVL 2 1E 3100 SP	2	2
FB4-2	8' 0"	2x10 SP No.2	2	2
Bk1	68' 0"	2x8 SP No.2	1	1
Bk2	51' 0"	2x8 SP No.2	1	1

Indicates Pier/Joist From Fig. D1 - Rafter

GENERAL NOTES & DESIGN ASSUMPTIONS

- ◆ = POSTING FROM VALLEY OR HIP
- ALL CEILING JOISTS ARE 2x8 SPF #2 SPACING PER IRC (UNO)
- ALL RAFTERS ARE 2x8 SPF #2 SPACING PER IRC (UNO)
- ALL LOAD HEADERS, NOT SHOWN ON LAYOUT, ARE (2)2x10 SYP #2 (UNO)
- ALL 2x4, 2x6 & 2x8 ARE SPF #2 (UNO)
- ALL 2x10 & 2x12 JOISTS ARE SYP #2 (UNO)
- ALL RIDGES AND HIP RAFTERS ARE 2x10 or 2x12 (UNO)
- ALL VALLEY RAFTERS ARE 2x12 (UNO)
- #J = NUMBER OF 2x4 SPF #2 JACK STUDS REQUIRED (LVL POST PT#)

GENERAL NOTES:

- 1) READ THE INSTALLATION GUIDE BEFORE FRAMING
- 2) OTHERWISE, WALLS NOT SHOWN ARE CONSIDERED NON-LOAD BEARING. REFERENCE ALL CEILING & ROOF LOADS TO FOUNDATION. BRACE DIRECTLY TO LOAD BEARING WALLS SUPPORTED BY FOUNDATION. REFER TO FIRSTSOURCE BEFORE MAKING ANY ALTERATIONS OR ADJUSTMENTS. FAILURE TO DO SO MAY RESULT IN COSTLY REPAIRS.

Raul Garcia
 Hoover Road
 CEILING FWP PLACEMENT PLAN
 Builders FirstSource, Central Carolina Markets
 DRAWN BY: Lorena Mejia
 DATE: 4/10/2024
 JOB NUMBER: 3849010
 SCALE: 1/4" = 1'

MINIMUM DESIGN DATA

LIVE LOAD 40 PSF
 DEAD LOAD 10 PSF

TOTAL LOAD 50 PSF

DOL = 100%

DEFLECTION CRITERIA L/480 (MINIMUM)

ARCHITECTURAL PLAN DATE: XX-XX-XX
 REVISED ARCH. PLAN DATE: XX-XX-XX

Sheet
 4 of 4

7601 BOEING DRIVE
GREENSBORO, NC 27409
V (336) 884-5454

4878 HAMPTON ROAD
CLEMMONS, NC 27409
V (336) 712-6910

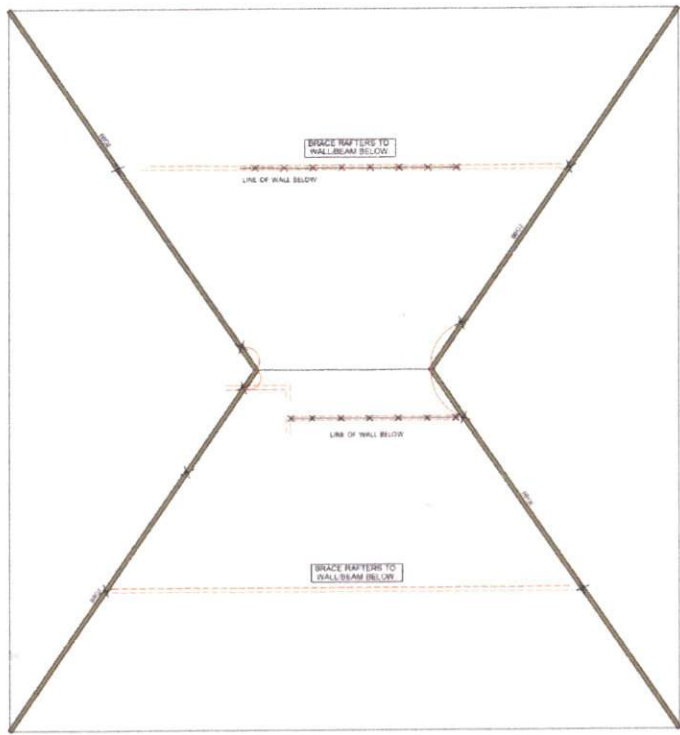
1135 ROBESON STREET
FAYETTEVILLE, NC 28305
V (910) 485-1111

3189 NC HIGHWAY 5
ABERDEEN, NC 28315
V (910) 344-2515

This layout and associated materials list has been prepared based on project plans and/or information provided to Builders FirstSource (BFS). It remains the responsibility of the builder, architect, designer, or other responsible persons to review this information to assure that it is appropriate, accurate, complete and complies with applicable building codes.

- GENERAL NOTES:**
- 1) READ THE INSTALLATION GUIDE BEFORE FRAMING.
 - 2) NON-LOAD BEARING WALLS NOT SHOWN ARE CONSIDERED OTHERWISE. WALLS NOT SHOWN ARE CONSIDERED BRACE DIRECTLY TO LONG BEARING WALLS SUPPORTED BY FOUNDATION.
 - 3) BRACE DIRECTLY TO LONG BEARING WALLS SUPPORTED BY FOUNDATION.
 - 4) ALTERNATIONS OR ADJUSTMENTS - FAILURE TO DO SO MAY RESULT IN COSTLY REPAIRS.

STICK BUILT ROOF 2" X 8" X ? LONG



GENERAL NOTES & DESIGN ASSUMPTIONS

◆ = POSTING FROM VALLEY OR HIP

ALL CEILING JOISTS ARE 2x8 SPF #2 SPACING PER IRC (UNO)

ALL RAFTERS ARE 2x8 SPF #2 SPACING PER IRC (UNO)

ALL LOAD HEADERS, NOT SHOWN ON LAYOUT, ARE (2)2x10 SYP #2 (UNO)

ALL 2x4, 2x6 & 2x8 ARE SPF #2 (UNO)

ALL 2x10 & 2x12 JOISTS ARE SYP #2 (UNO)

ALL RIDGES AND HIP RAFTERS ARE 2x10 or 2x12 (UNO)

ALL VALLEY RAFTERS ARE 2x12 (UNO)

#J = NUMBER OF 2x4 SPF #2 JACK STUDS REQUIRED (LVL POST PT#)

Design is based on Roof Assumptions shown. It is the Builder's Responsibility to verify and inform Builders FirstSource if the Assumptions differ. Additional Design Considerations may apply.

Builders FirstSource Assumes that Ceiling Joist and Rafters are properly attached to provide a Code-Prescribed Rafter Tie (i.e. Compression Roof System) unless noted otherwise. It is the Builder's Responsibility to frame the roof in accordance with the Code. Please inform Builders FirstSource if framing conditions differ from assumptions. Additional Design Considerations may apply.

Raul Garcia
Hoover Road
ROOF FRAMING PLAN
Builders FirstSource, Central Carolina Markets
DRAWN BY: Lorena Mejia
DATE: 4/10/2024
JOB NUMBER: 1049010
SCALE: 1/4" = 1'

MINIMUM DESIGN DATA
LIVE LOAD 40 PSF
DEAD LOAD 10 PSF
TOTAL LOAD 50 PSF

DOL = 100%
DEFLECTION CRITERIA
L/480 (MINIMUM)

ARCHITECTURAL PLAN DATE
XX-XX-XX

REVISED ARCH. PLAN DATE
XX-XX-XX

Sheet
5 of 5