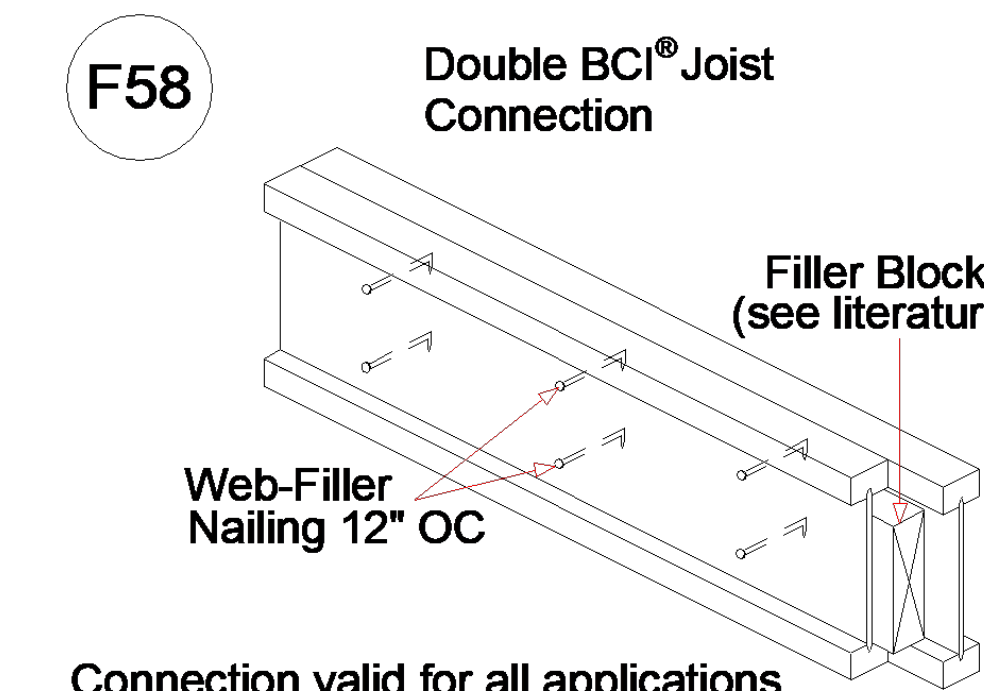


Backer blocks are required for all hangers supported by I-joists.

Connector Summary			
Qty	Manuf	Product	Flange
1	Simpson	HHUS410	None
3		HUC3514	None
13	Simpson	IUS2.37/14	None
4	Simpson	MIT3514-2	None

Products				
PlotID	Length	Product	Plies	Net Qty
J2-1	27' 0"	14" BCI® 6000s-1.8	1	3
J2-2	27' 0"	14" BCI® 6000s-1.8	2	4
J2-3	21' 0"	14" BCI® 6000s-1.8	1	4
J2-4	21' 0"	14" BCI® 6000s-1.8	2	6
J2-5	18' 0"	14" BCI® 6000s-1.8	1	30
J2-6	18' 0"	14" BCI® 6000s-1.8	2	4
J2-7	13' 0"	14" BCI® 6000s-1.8	1	4
J2-8	9' 0"	14" BCI® 6000s-1.8	1	2
J2-9	6' 0"	14" BCI® 6000s-1.8	1	7
J2-10	6' 0"	14" BCI® 6000s-1.8	2	2
BM2-1	8' 0"	1-3/4" x 9-1/2" VERSA-LAM® 2.0 3100 SP	2	2
BM2-2	10' 0"	1-3/4" x 11-7/8" VERSA-LAM® 2.0 3100 SP	2	2
BM2-3	10' 0"	1-3/4" x 14" VERSA-LAM® 2.0 3100 SP	2	2
BM2-4	8' 0"	1-3/4" x 14" VERSA-LAM® 2.0 3100 SP	2	2
BM2-5	22' 0"	1-3/4" x 18" VERSA-LAM® 2.0 3100 SP	3	3
Rim1	12' 0"	1-1/8" x 14" BC RIM BOARD OSB	1	17
Blk1	2' 0"	14" BLOCKING	1	36

Connect all 2-ply joists in the field per detail F58.



Connection valid for all applications. Contact Boise EWP Engineering for specific conditions.

FOR PERMIT

Client:	MATTAMY HOMES-RALEIGH	LEVEL
Job:	LOT 18 PROVIDENCE CREEK	
Plan Information:	SHENANDOAH-CR	
	OPTIONS	
NOT TO SCALE	Date: DATE	
Drawn By: MBB	Job #: 24-2859-J02	Sales Rep: KYLE GIBSON
	Phone: 24-2859-J02	

▲ = LEFT END OF TRUSS

REVISIONS:



Moncks Corner/Easley, SC (800) 475-3999
Sparta, NC (336) 372-2226

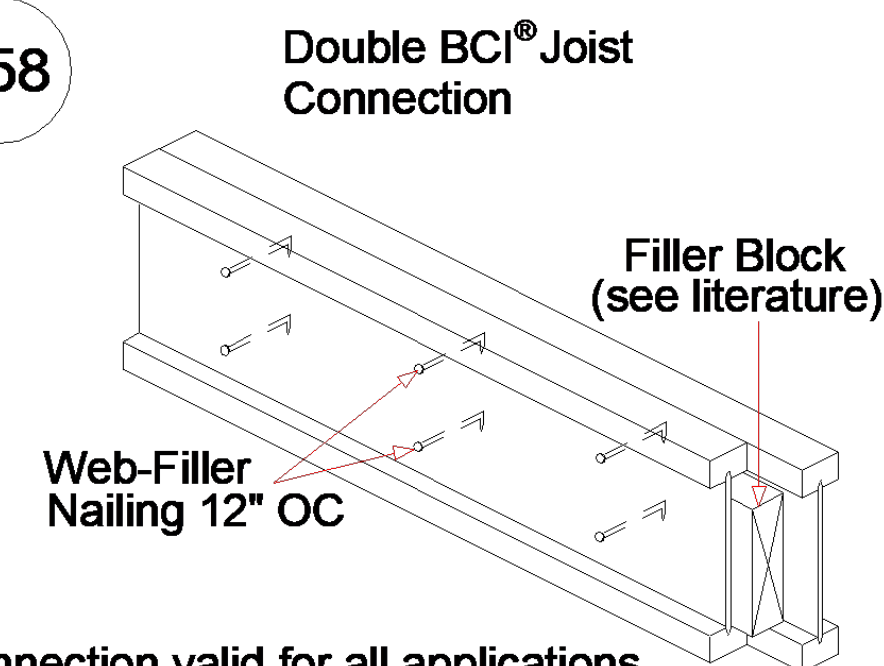
Backer blocks are required for all hangers supported by I-joists.

Connector Summary			
Flange	Product	Manuf	Qty
None	HHUS410	Simpson	1
None	HUC3514		3
None	IUS2.37/14	Simpson	13
None	MIT3514-2	Simpson	4

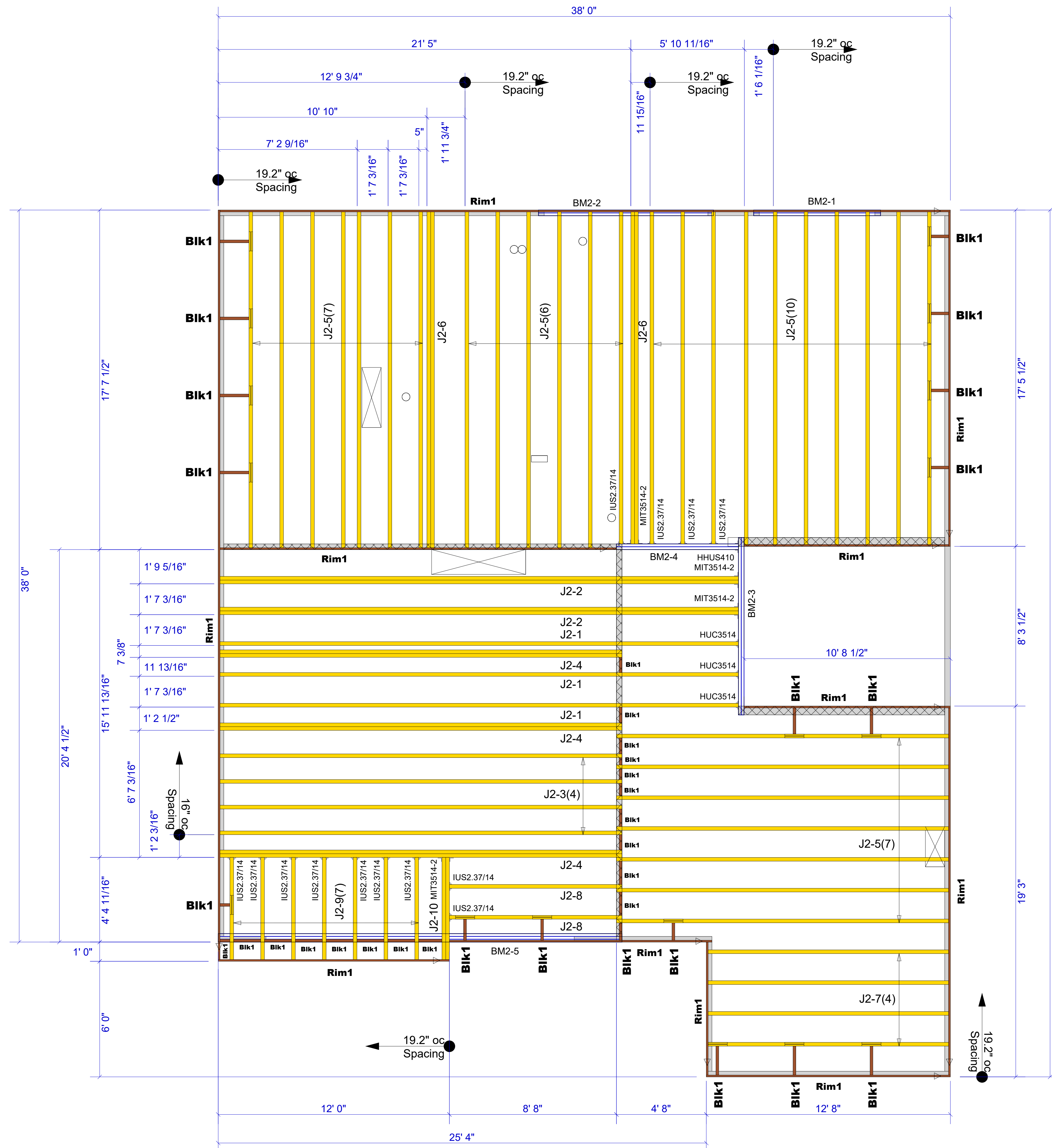
Products					
Net Qty	Plies		Product	Length	PlotID
3	1		14" BCI@ 6000s-1.8	27' 0"	J2-1
4	2		14" BCI@ 6000s-1.8	27' 0"	J2-2
4	1		14" BCI@ 6000s-1.8	21' 0"	J2-3
6	2		14" BCI@ 6000s-1.8	21' 0"	J2-4
30	1		14" BCI@ 6000s-1.8	18' 0"	J2-5
4	2		14" BCI@ 6000s-1.8	18' 0"	J2-6
4	1		14" BCI@ 6000s-1.8	13' 0"	J2-7
2	1		14" BCI@ 6000s-1.8	9' 0"	J2-8
7	1		14" BCI@ 6000s-1.8	6' 0"	J2-9
2	2		14" BCI@ 6000s-1.8	6' 0"	J2-10
2	2		1-3/4" x 9-1/2" VERSA-LAM@ 2.0 3100 SP	8' 0"	BM2-1
2	2		1-3/4" x 11-7/8" VERSA-LAM@ 2.0 3100 SP	10' 0"	BM2-2
2	2		1-3/4" x 14" VERSA-LAM@ 2.0 3100 SP	10' 0"	BM2-3
2	2		1-3/4" x 14" VERSA-LAM@ 2.0 3100 SP	8' 0"	BM2-4
3	3		1-3/4" x 18" VERSA-LAM@ 2.0 3100 SP	22' 0"	BM2-5
17	1		1-1/8" x 14" BC RIM BOARD OSB	12' 0"	Rim1
36	1		14" BLOCKING	2' 0"	Blk1

Connect all 2-ply joists in the field per detail F58.

F58



Connection valid for all applications. Contact Boise EWP Engineering for specific conditions.



▲ = LEFT END OF TRUSS

REVISIONS:



Moncks Corner/Easley, SC (800) 475-3999
Sparta, NC (336) 372-2226

FOR PERMIT

Client: MATTAMY HOMES-RALEIGH
Job: LOT 18 PROVIDENCE CREEK

Plan Information:
SHENANDOAH-CR
OPTIONS

NOT TO SCALE
Date: DATE
Job #: Sales Rep: KYLE GIBSON
Drawn By: MBB Phone: 24-2859-J02

LEVEL