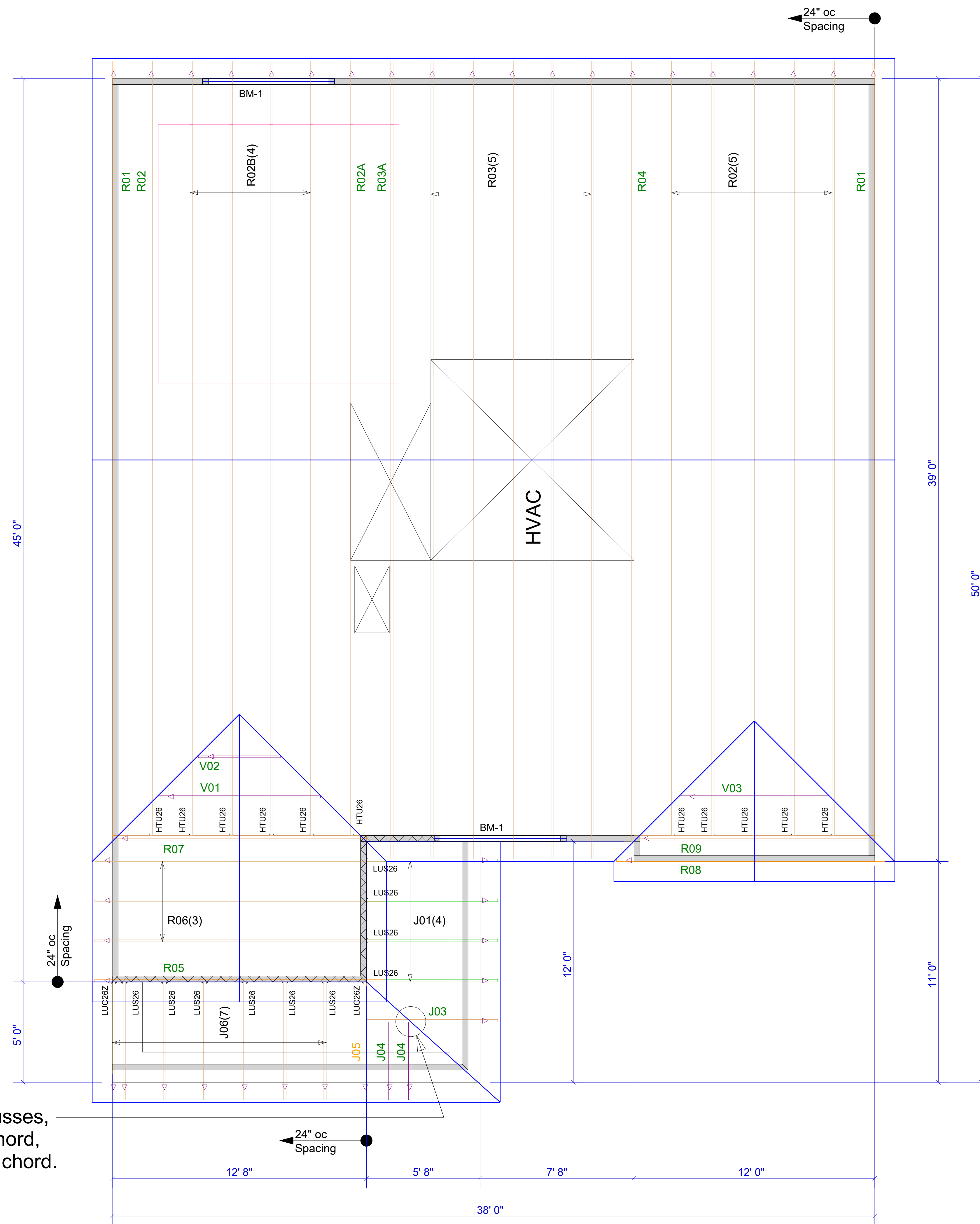


Products				
PlotID	Length	Product	Plies	Net Qty
BM-1	8-00-00	1-3/4" x 9-1/2" VERSA-LAM® 2.0 3100 SP	2	4

Truss Connector Total List		
Manuf	Product	Qty
Simpson	HTU26	11
Simpson	LUC26Z	2
Simpson	LUS26	10

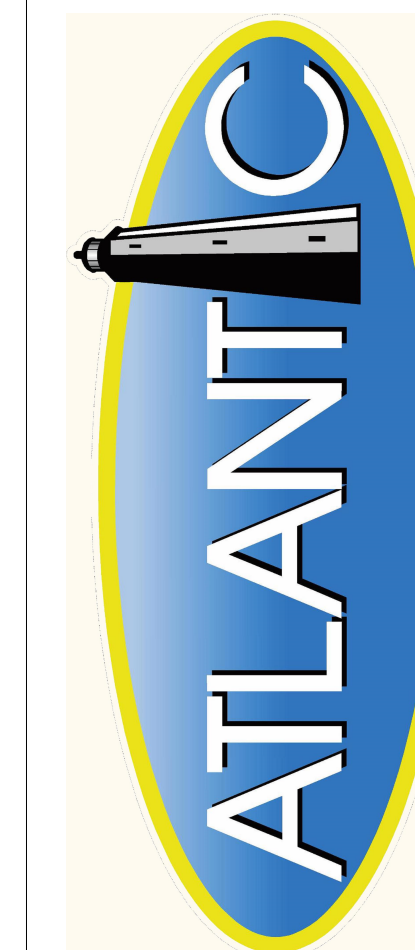
For all small open-ended mono trusses, use (3) 10d toe nails in the top chord, and (3) 10d toe nails in the bottom chord.



▲ = LEFT END OF TRUSS

FOR PERMIT

REVISIONS:



Moncks Corner/Easley, SC (800) 475-3999
Sparta, NC (336) 372-2226

Client: MATTAMY HOMES-RALEIGH
Job: LOT 9 PROVIDENCE CREEK

Plan Information:
SHENANDOAH-CR

NOT TO SCALE

Drawn By: MBB

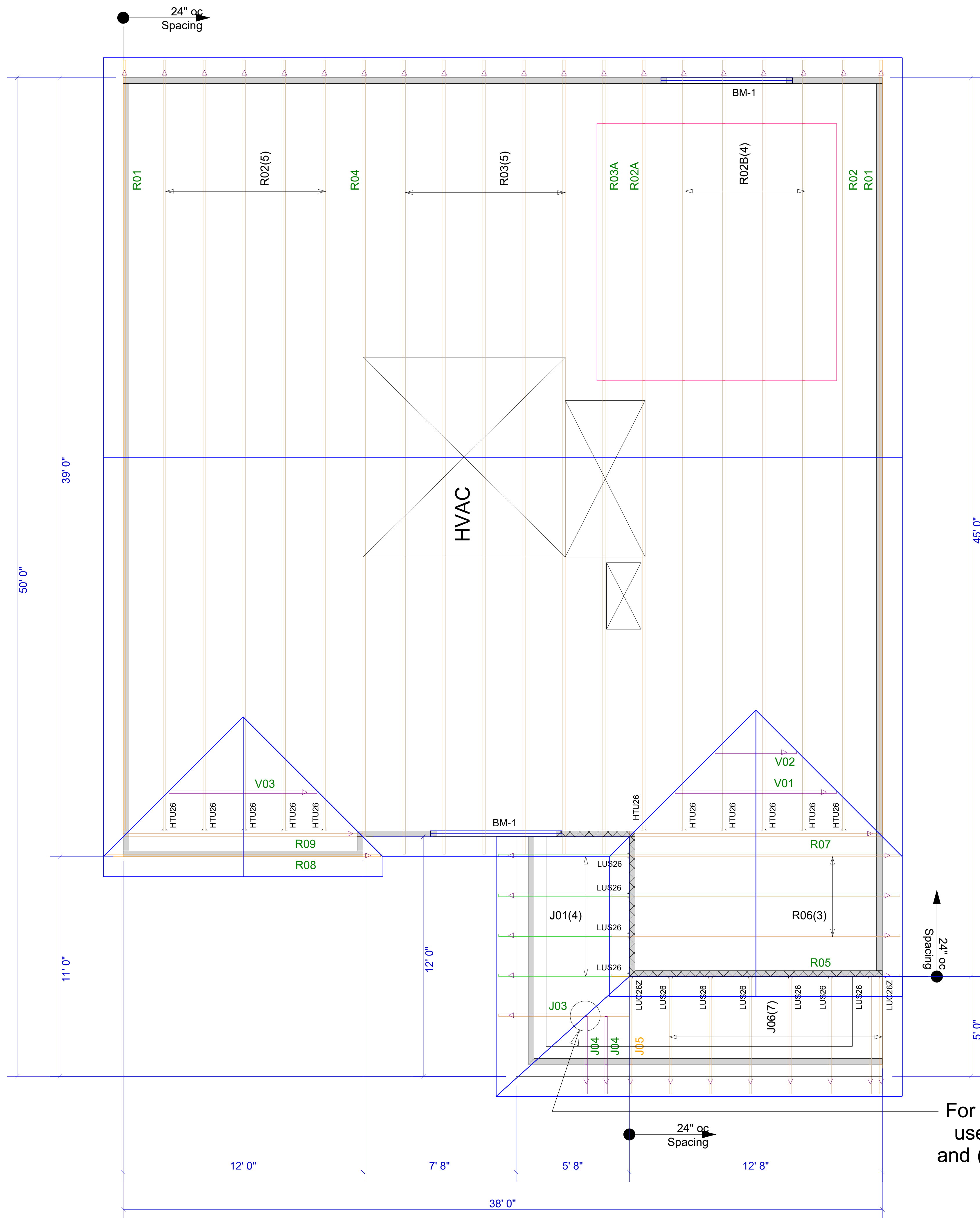
Date: 03/27/24

Job #: 24-2853-R01

Sales Rep: KYLE GIBSON

Phone:

ROOF



Net Qty	Plies	Products	Product	Length	PlotID
4	2	1-3/4" x 9-1/2" VERSA-LAM® 2.0 3100 SP	8-00-00	BM-1	

Truss Connector Total List		
Qty	Product	Manuf
11	HTU26	Simpson
2	LUC26Z	Simpson
10	LUS26	Simpson

For all small open-ended mono trusses, use (3) 10d toe nails in the top chord, and (3) 10d toe nails in the bottom chord.

▲ = LEFT END OF TRUSS

FOR PERMIT

Client: **MATTAMY HOMES-RALEIGH**
 Job: **LOT 9 PROVIDENCE CREEK**
 Plan Information: **SHENANDOAH-CR**
 NOT TO SCALE
 Drawn By: **MBB**
 Date: 03/27/24
 Job #: **24-2853-R01**
 Sales Rep: **KYLE GIBSON**
 Phone:

REVISIONS:



Moncks Corner/Easley, SC (800) 475-3999
 Sparta, NC (336) 372-2226

WARNING! Long span trusses, 60' or greater in length, require extreme care and experience for proper and safe handling and installation. For general handling and installation guidance, see the "Guide to Good Practice for Handling, Installing, Restraining & Bracing of Metal Plate Connected Wood Trusses ("BCSI"), JOINTLY PRODUCED BY SBCA and TPI. For project specific guidance, consult with a registered design professional. ATLANTIC assumes no responsibility for the handling, installation or bracing of trusses.