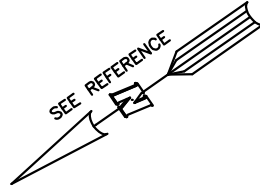


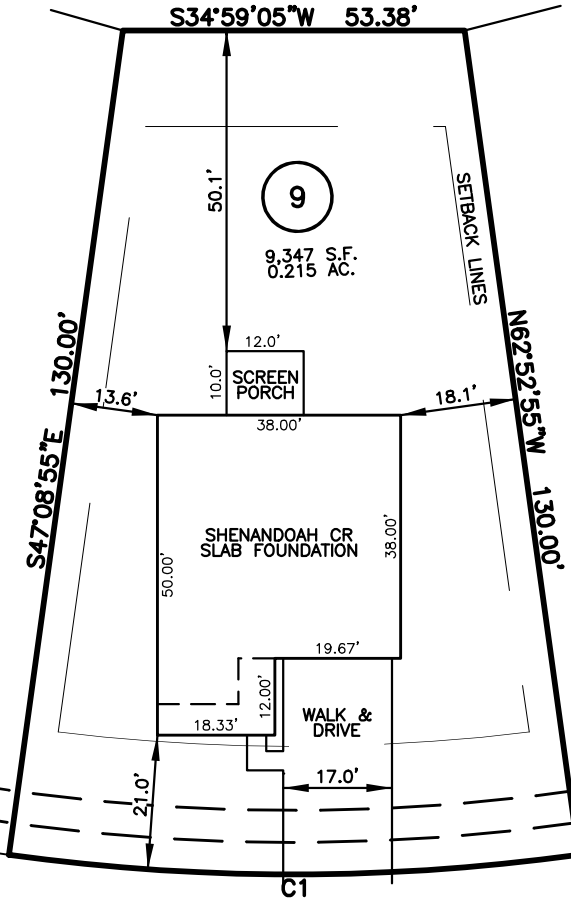
PLOT PLAN FOR  
**MATTAMY HOMES**  
 213 PROVIDENCE CREEK DRIVE  
 LOT 9, PROVIDENCE CREEK, PHASE 1  
 HECTORS CREEK AND BLACK RIVER TOWNSHIP, HARNETT COUNTY, NORTH CAROLINA



OPEN SPACE #9

**LEGEND**

- AIR CONDITIONER
- BACK OF CURB
- BACK FLOW PREVENTER
- CLEANOUT
- CURB INLET
- DRILL HOLE SET
- EXISTING CONCRETE MONUMENT
- EXISTING DRILL HOLE
- EXISTING IRON STAKE
- EXISTING IRON PIPE
- ELECTRIC METER
- EXISTING PK NAIL
- ELECTRIC STUB
- FLARED END SECTION
- FIRE HYDRANT
- FIBER OPTIC PEDESTAL
- GAS METER
- GUY
- INVERT
- IRON PIPE SET
- IRON ROD SET
- LIGHT POLE
- MAGNETIC NAIL SET
- MANHOLE SANITARY SEWER
- MANHOLE STORM SEWER
- OVERHEAD WIRES
- PK NAIL SET
- POINT NOT SET
- RAIL ROAD SPIKE
- TELEPHONE PEDESTAL
- TRANSFORMER
- CABLE TV PEDESTAL
- UTILITY POLE
- WATER METER
- WATER VALVE
- YARD INLET
- FIELD MEASUREMENT



PROVIDENCE CREEK DRIVE  
 50' PUBLIC R/W & UTILITY

NUM	RADIUS	ARC	DELTA	CHORD BRG	CHORD
C1	325.00'	89.25'	15°44'01"	N 34°59'05" E	88.97'

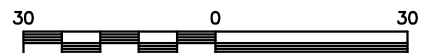
IMPERVIOUS SURFACES	S.F.
HOUSE	1,670
WALK & DRIVE	600
PORCH	120
TOTAL	2,390
PERCENT IMPERVIOUS	25.6%

**SETBACK INFO**

FRONT: \_\_\_\_\_ 20'  
 REAR: \_\_\_\_\_ 15'  
 SIDES: \_\_\_\_\_ 5'  
 CORNER SIDE: \_\_\_\_\_ 15'

**REFERENCES:**

BM 2022 PGS 346-351



SCALE: 1" = 30'

**NOTES**

1. THIS SURVEY SUBJECT TO ANY FACTS THAT MAY BE DISCLOSED BY A FULL AND ACCURATE TITLE SEARCH.
2. THIS MAP MAY NOT BE A CERTIFIED SURVEY AND HAS NOT BEEN REVIEWED BY A LOCAL GOVERNMENT AGENCY FOR COMPLIANCE WITH ANY APPLICABLE LAND DEVELOPMENT REGULATIONS AND HAS NOT BEEN REVIEWED FOR COMPLIANCE WITH RECORDING REQUIREMENTS FOR PLATS.

PLOT PLAN  
 PRELIMINARY PLAT- NOT FOR RECORDATION,  
 CONVEYANCE OR SALES

REV CODE: 1.FLIP, 2.PLAN, 3.ROTATE, 4.MOVE, 5.SS  
 6.SEVERAL OF ABOVE, 7.LAND FEATURE, 8. OTHER

DATE: APRIL 02, 2024

F.B. \_\_\_\_\_

RWK, PA

**ENGINEERING ~ SURVEYING**

CORPORATE LICENSE: C-1771  
 101 W. MAIN ST., SUITE 202  
 GARNER, NC 27529  
 PHONE (919) 779-4854  
 FAX (919) 779-4056