

SOIL/SITE EVALUATION

(Continuation Sheet-Complete all field in full)

Sheet 1 of 4

DEPARTMENT OF HEALTH AND HUMAN SERVICES
 DIVISION OF PUBLIC HEALTH
 ENVIRONMENTAL HEALTH SECTION
 ON-SITE WATER PROTECTION BRANCH

PROPERTY ID #: 9579-52-3028
 DATE OF EVALUATION: 7/21/23
 COUNTY: HARNETT

P R O F I L E #	.1940 LANDSCAPE POSITION/ SLOPE %	HORIZ ON DEPTH (IN.)	SOIL MORPHOLOGY (.1941)		OTHER PROFILE FACTORS				PROFILE CLASS & LTAR
			.1941 STRUCTURE/ TEXTURE	.1941 CONSISTENCE/ MINERALOGY	.1942 SOIL WEIENESS/ COLOR	.1943 SOIL DEPTH	.1956 SAPRO CLASS	.1944 RESTR HORIZ	
1	SS 29% PS	0-18	GR, SL	FR, NP, NS	30" 10yr 7/2 PS	40"+ PS	—	—	PS 0.4
		18-30	SBK, SCL	F, SP, SS, SXP					
		30-40	SBK, SCL	VF, SP, SS, SXP					
2	SS 39% PS	0-8	GR, SL	FR, NP, NS	18" 10yr 8/ 10yr 8 1/2 U/PS DRIP	28"+ U/PS	—	—	U/PS DRIP SFC/6" 0.3
		8-16	ABK, SCL	F, SP, SS, SXP					
		18-24	SBK, C	F, P, S, SXP					
		24-28	SBK, C	F, P, S, SXP					
3	SS 39% PS	0-6	GR, SL	FR, NP, NS	24" 10yr 8/ 10yr 8 1/2 U/PS LP ACCEP.	40"+ PS	—	—	U/PS 12" 0.3 DRIP
		6-12	ABK, SCL	F, SP, SS, SXP					
		12-24	SBK, C	F, P, S, SXP					
		24-40	SBK, C	F, P, S, SXP					
4	SS 59% PS	0-6	GR, SL	FR, NP, NS	24" 10yr 8 1/2 U/PS	48" PS	—	—	U/PS 12" 0.3 DRIP
		6-12	GR, SCL	F, SP, SS, SXP					
		12-24	SBK, SC	F, P, S, SXP					
		24-48	SBK, SC	F, P, S, SXP					
5	SS 59% PS	0-8	GR, SL	FR, NP, NS	48" PS	48"	—	—	PS 0.4 CONV.
		8-18	GR, SL	FR, NP, NS					
		18-28	SBK, SCL	F, SP, SS, SXP					
		28-48	ABK, SCL	F, SP, SS, SXP					

COMMENTS: HOLES 1, 8, 9, 10, 11 + 12 PS FOR SHALLOW CONVENTIONAL (12") OR LOW PROFILE CHAMBER WITHOUT 25% REDUCTION, HOLES 2, 3, 5, 6, 7 → SURFACE DRIP PUMP MAY BE REQUIRED.

SOIL/SITE EVALUATION

(Continuation Sheet-Complete all field in full)

Sheet 2 of 4

DEPARTMENT OF HEALTH AND HUMAN SERVICES
 DIVISION OF PUBLIC HEALTH
 ENVIRONMENTAL HEALTH SECTION
 ON-SITE WATER PROTECTION BRANCH

PROPERTY ID #: 9579-52-3028
 DATE OF EVALUATION: 7/21/23
 COUNTY: HARNETT

P R O F I L E #	.1940 LANDSCAPE POSITION/ SLOPE %	HORIZ ON DEPTH (IN.)	SOIL MORPHOLOGY (.1941)		OTHER PROFILE FACTORS				PROFILE CLASS & LTAR
			.1941 STRUCTURE/ TEXTURE	.1941 CONSISTENCE/ MINERALOGY	.1942 SOIL WETNESS/ COLOR	.1943 SOIL DEPTH	.1956 SAPRO CLASS	.1944 RESTR HORIZ	
6	SS 49% PS	0-6	GR, SL	FR, NP, NS	U/PS	PS 36"	—	—	U/PS DRIP 0.3
		6-12	GR, SL	FR, NP, NS	20"				
		12-20	SBK, SCL	F, SP, SS, SXP	10yr 8/1				
		20-36	SBK, SCL	F, P, S, SXP	10yr 8/2				
7	SS 29% PS	0-4	GR, SL	FR, NP, NS	U/PS	PS 36"	—	—	U/PS DRIP 0.3
		4-10	GR, SL	FR, NP, NS	18"				
		10-18	SBK, SCL	F, SP, SS, SXP	10yr 8/1				
		16-24	SBK, SCL	F, P, S, SXP	10yr 8/2				
8	SS 29% PS	0-4	GR, SL	FR, NP, NS	U/PS	PS 36"	—	—	U/PS 0.4
		4-8	GR, SL	FR, NP, NS	30"				
		8-24	SBK, SCL	F, SP, SS, SXP	10yr 7/2				
		24-36	SBK, SCL	F, SP, SS, SXP	10yr 8/2				
9	SS 29% PS	0-6	GR, SL	FR, NP, NS	U/PS	PS 36"	—	—	U/PS 0.4
		6-10	GR, SL	FR, NP, NS	28"				
		10-24	ABK, SCL	FR, SP, SS, SXP	10yr 7/2				
		24-28	SBK, SC	F, P, S, SXP	10yr 8/2				
10	SS 29% PS	0-4	GR, SL	FR, NP, NS	U/PS	PS 36"	—	—	U/PS 0.4
		4-18	GR, SL	FR, NP, NS	28"				
		18-28	ABK, SCL	F, SP, SS, SXP	10yr 7/2				
		28-36	SBK, SCL	F, SP, SS, SXP	10yr 8/1				

COMMENTS:

SOIL/SITE EVALUATION

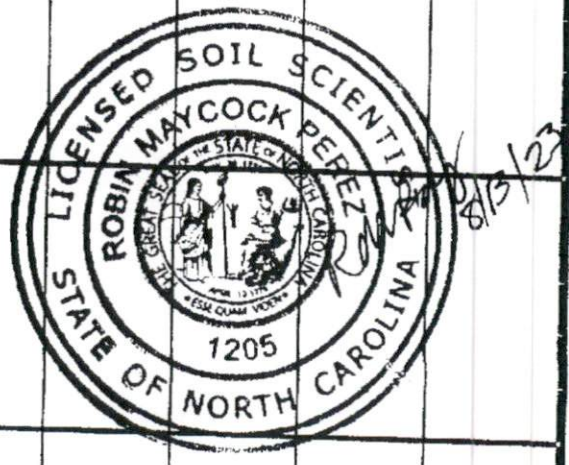
(Continuation Sheet-Complete all field in full)

Sheet 3 of 4

DEPARTMENT OF HEALTH AND HUMAN SERVICES
 DIVISION OF PUBLIC HEALTH
 ENVIRONMENTAL HEALTH SECTION
 ON-SITE WATER PROTECTION BRANCH

PROPERTY ID #: 9579-52-3028
 DATE OF EVALUATION: 7/21/2023
 COUNTY: HARNETT

P R O F I L E #	.1940 LANDSCAPE POSITION/ SLOPE %	HORIZ ON DEPTH (IN.)	SOIL MORPHOLOGY (.1941)		OTHER PROFILE FACTORS				PROFILE CLASS & LTAR
			.1941 STRUCTURE/ TEXTURE	.1941 CONSISTENCE/ MINERALOGY	.1942 SOIL WETNESS/ COLOR	.1943 SOIL DEPTH	.1956 SAPRO CLASS	.1944 RESTR HORIZ	
11	SS	0-6	GR, SL	FR, NP, NS	U/PS	PS			U/PS
	390	6-15	GR, SL	FR, NP, NS	28" 10yr ^T /2	36"	—	—	0.4
		15-28	ABK, SCL	F, SP, SS, SXP					
		28-36	SBK, SCL	F, SP, SS, SXP					
PS									
12	SS	0-6	GR, SL	FR, NP, NS	U/PS	PS			U/PS
	290	6-18	GR, SL	FR, NP, NS	30" 10yr ⁸ /1	36"	—	—	0.4
		18-30	ABK, SCL	F, SP, SS, SXP					
		30-36	SBK, SCL	F, SP, SS, SXP					
PS									



COMMENTS: LOW PROFILE CHAMBER OR SHALLOW CONVENTIONAL PUMP MAY BE REQUIRED.

LEGEND

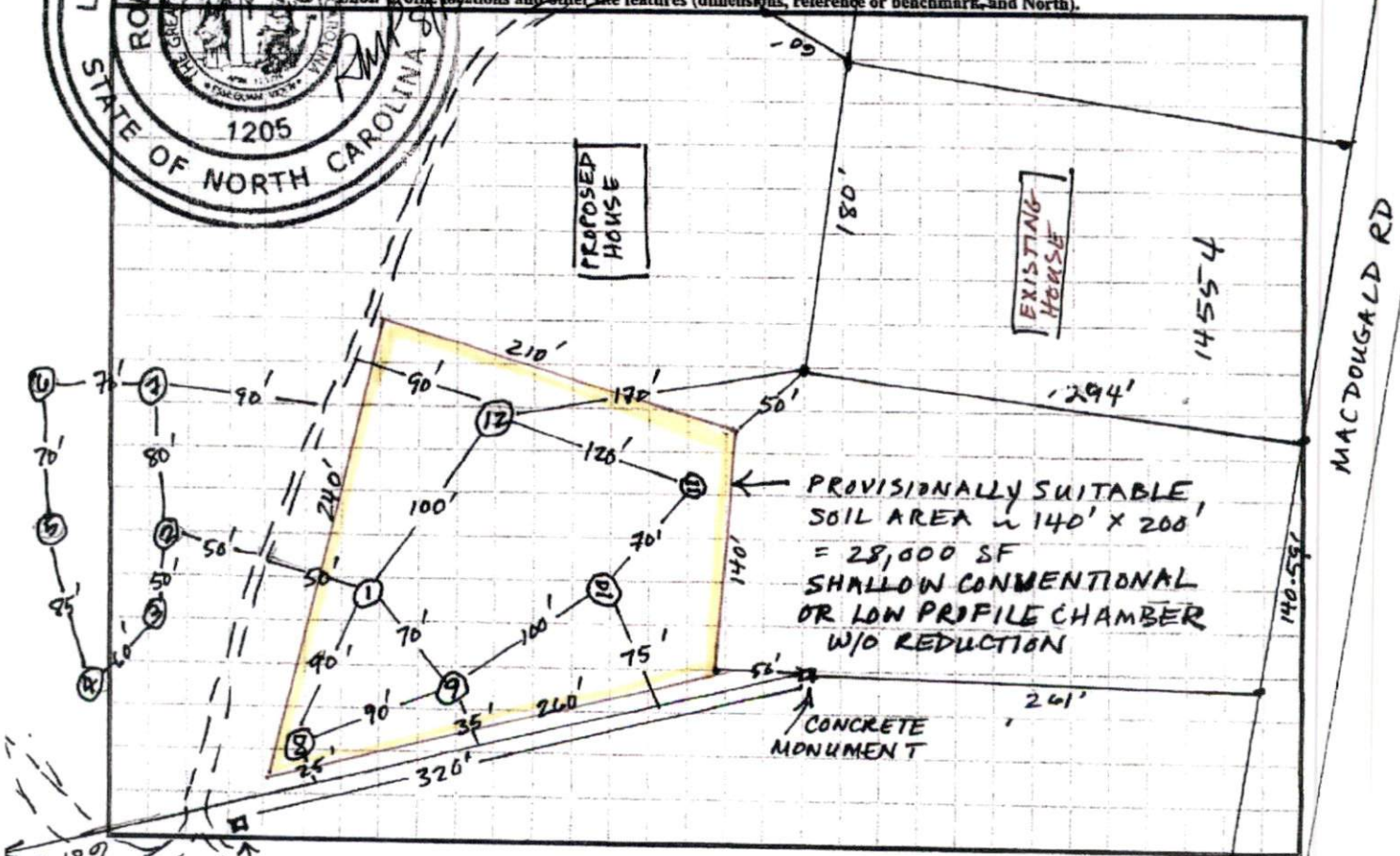
use the following standard abbreviations

LANDSCAPE POSITION	GROUP	SOIL TEXTURE	CONVENTIONAL .1955 LTAR*	LPP 1957 LTAR*	MINERALOGY/ CONSISTENCE	STRUCTURE
CC (Concave Slope)	I	S (Sand)	1.2 - 0.8	0.6 - 0.4	SEXP (Slightly Expansive)	G (Single Grain)
CV (Convex Slope)		LS (Loamy Sand)				M (Massive)
D (Drainage Way)	II	SL (Sandy Loam)	0.8 - 0.6	0.4 - 0.3	EXP (Expansive)	CR (Crumb)
DS (Debris Slump)		L (Loam)				GR (Granular)
FP (Flood Plain)	III	Si (Silt)	0.6 - 0.3	0.3 - 0.15		SBK (Subangular Blocky)
FS (Foot Slope)		SiCL (Silty Clay)				ABK (Angular Blocky)
H (Head Slope)		CL (Clay Loam)				PL (Platy)
L (Linear Slope)		SCL (Sandy Clay L.)				PR (Prismatic)
N (Nose Slope)	IV	SiL (Silt Loam)	None	None		
R (Ridge)		SC (Sandy Clay)				
S (Shoulder Slope)		SiC (Silty Clay)				
T (Terrace)		C (Clay)				
		O (Organic)				

MOIST	WET
VFR (Very Friable)	NS (Non-sticky)
FR (Friable)	SS (Slightly Sticky)
FI (Firm)	S (Sticky)
VFI (Very Firm v. Very Sticky)	VS (Very Sticky)
EFI (Extremely Firm)	NP (Non-plastic)
	SP (Slightly Plastic)
	P (Plastic)
	VP (Very Plastic)

*Adjust LTAR due to depth, consistence, structure, soil wetness, landscape, position, wastewater flow and quality.

- NOTES**
- HORIZON DEPTH: In inches below natural soil surface
 - DEPTH OF FILL: In inches from land surface
 - RESTRICTIVE HORIZON: Thickness and depth from land surface
 - SAPROLITE: (S) (suitable), (U) (unsuitable)
 - SOIL WETNESS: (W) (wet), (D) (dry), (M) (moist)
 - CLASSIFICATION: (S) (Sample), PS (Provisionally Suitable), or U (Unsuitable)
 - Evaluation of saporite shall be by...
 - Long-term Acceptance Value (LTAR): 0.4



$$6 \text{ BDRMS} = \frac{720 \text{ GPD}}{0.4} = \frac{1800 \text{ SF}}{3} = 600 \text{ LF}$$

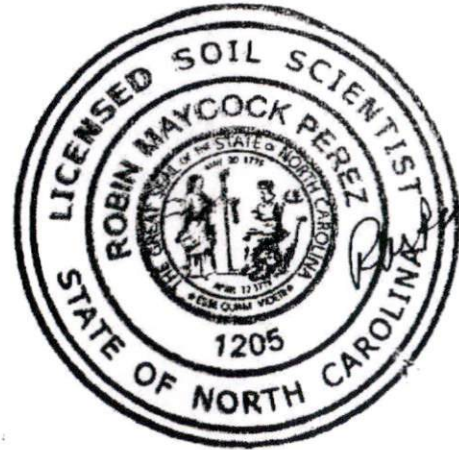
600 LF RESERVE
 1200 LF

INSTALL ~ 60' X 100'
 60 100' LINES

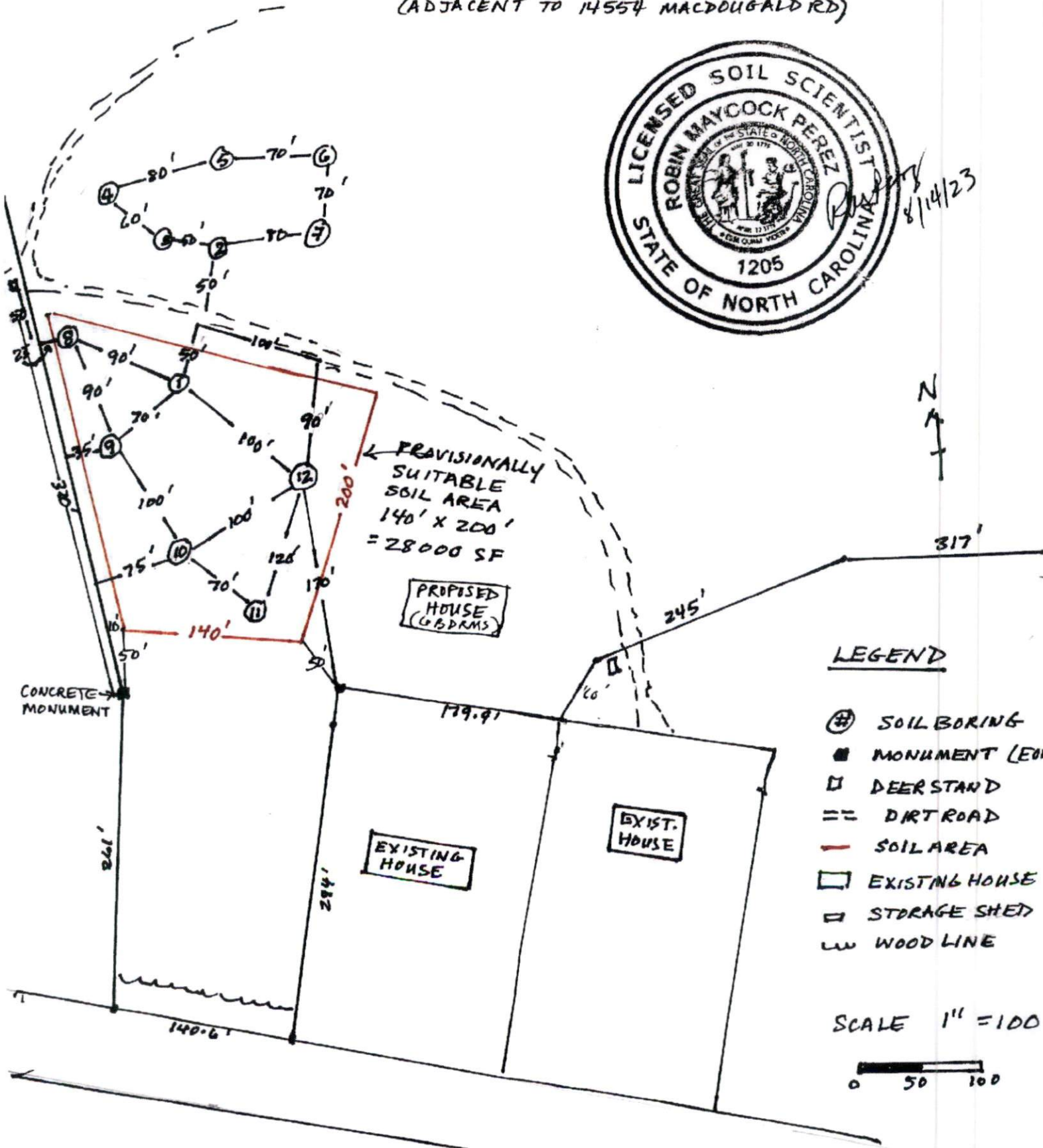
N ←
 SCALE 1" = 100'

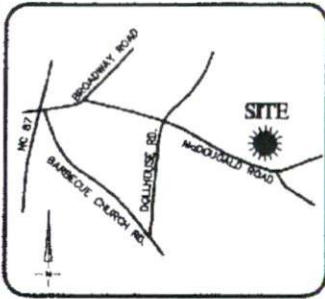


14652
 SOIL/SITE SKETCH FOR 15.295 AC ON MACDOUGALD RD
 PIN: 9579-62-3028, HARNETT CO. 8/13/2023
 (ADJACENT TO 14554 MACDOUGALD RD)



8/14/23

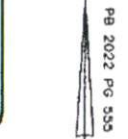




VICINITY MAP
Not To Scale



N/F
GROSS LAND COMPANY, LLC
PIN 9579-42-1362
DB 3960 PG 496
PB 2016 PG 257



INSET
N.T.S.

IMPERVIOUS SURFACE AREA	
DESCRIPTION	AREA
HOUSE w/ PORCH	3,540 S.F.
SC PORCH/PATIO/HVAC	838 S.F.
DRIVEWAY & WALKS	11,233 S.F.
DETACHED GARAGE	1,201 S.F.
TOTAL (PROPOSED)	16,812 S.F.
LOT AREA =	666,488 S.F.
% IMPERVIOUS AREA	= 2.5%

THIS PROPERTY MAY BE SUBJECT TO ANY AND ALL APPLICABLE DEED RESTRICTIONS, EASEMENTS, RIGHT-OF-WAY, UTILITIES AND RESTRICTIVE COVENANTS WHICH MAY BE OF RECORD OR IMPLIED

N/F
RUSSELL E. MCLEAN
PIN 9579-41-8816
DB 3950 PG 902
PB 2016 PG 55

N/F
FRANCES W. SPIVEY
PIN 9579-42-8763
DB 2429 PG 211

N/F
DORIS C. HARRINGTON &
ANDREW B. HARRINGTON
PIN 9579-82-0809
DB 1299 PG 895

SETBACKS (PB 2022 PG 555):
FRONT (FROM R/W) - 35'
SIDE - 10'
REAR - 25'

N/F
GRANVILLE S. STY.
PIN 9579-61-1888
DB 1980 PG 120

REV.	DATE	REVISIONS BY	COMMENTS
1	3/28/24	AS	INITIALS & SIGNED HOUSE

McDOUGALD ROAD
(SR 1229)
60' PRIVATE R/W

100 0 100
SCALE: 1" = 100'

**RESIDENTIAL
LAND SERVICES, PLLC.**
1917 Evans Road
Cary, North Carolina 27513
Phone (919) 378-9316

HOUSE LOCATION PLOT PLAN
FOR
McDOUGALD ROAD
LOT 4A, PAULA SPIVEY SMITH SUBDIVISION
Barbecue Township, Harrett County, North Carolina

PROPERTY OF: _____
MAP BOOK 2022 PAGE 555 DEED REFERENCE _____ PAGE _____

DRAWN: JLA SURVEYED: N/A CHECKED: DMR DATE: MARCH 11, 2024

