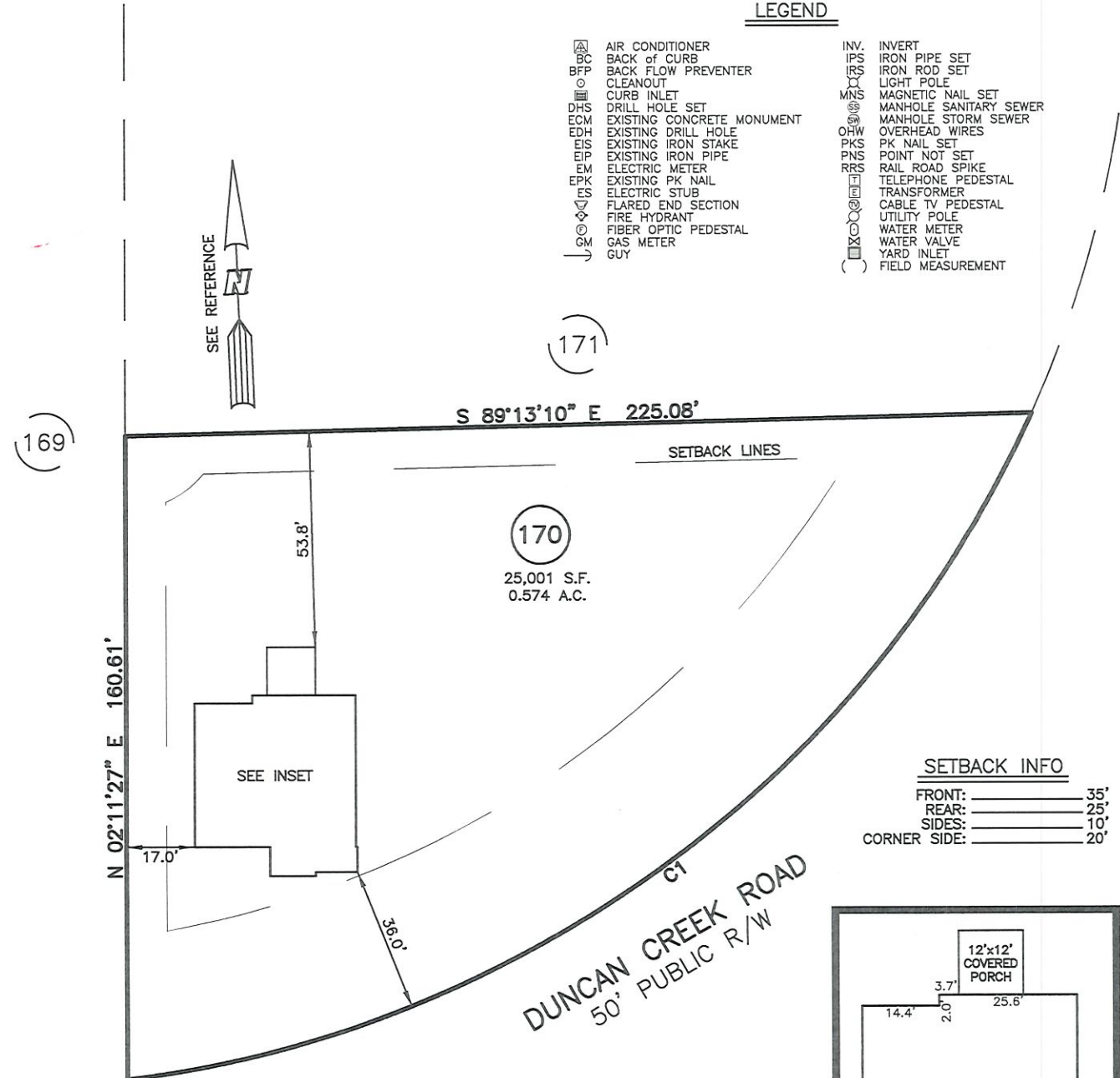


AS-BUILT IMPROVEMENTS FOR  
**NEW HOME, INC.**  
 134 DUNCAN CREEK ROAD  
 LOT 170, DUNCAN'S CREEK PHASE 1  
 UPPER LITTLE CREEK TOWNSHIP, HARNETT COUNTY, NORTH CAROLINA

**LEGEND**

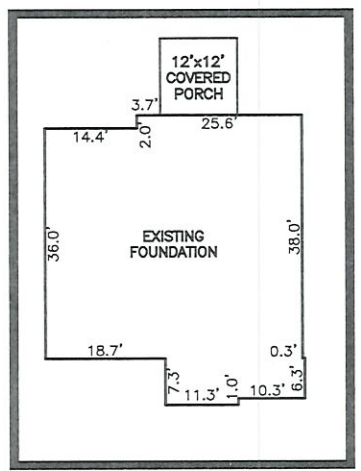
- |   |  |
|---|--|
| <ul style="list-style-type: none"> <li>△ AIR CONDITIONER</li> <li>BC BACK OF CURB</li> <li>BFP BACK FLOW PREVENTER</li> <li>○ CLEANOUT</li> <li>□ CURB INLET</li> <li>DHS DRILL HOLE SET</li> <li>EDM EXISTING CONCRETE MONUMENT</li> <li>EDH EXISTING DRILL HOLE</li> <li>EIS EXISTING IRON STAKE</li> <li>EIP EXISTING IRON PIPE</li> <li>EM ELECTRIC METER</li> <li>EPK EXISTING PK NAIL</li> <li>ES ELECTRIC STUB</li> <li>▽ FLARED END SECTION</li> <li>⊕ FIRE HYDRANT</li> <li>⊙ FIBER OPTIC PEDESTAL</li> <li>GM GAS METER</li> <li>→ GUY</li> </ul> | <ul style="list-style-type: none"> <li>INV. INVERT</li> <li>IPS IRON PIPE SET</li> <li>IRS IRON ROD SET</li> <li>○ LIGHT POLE</li> <li>MNS MAGNETIC NAIL SET</li> <li>⊕ MANHOLE SANITARY SEWER</li> <li>⊕ MANHOLE STORM SEWER</li> <li>OHV OVERHEAD WIRES</li> <li>PKS PK NAIL SET</li> <li>PNS POINT NOT SET</li> <li>RRS RAIL ROAD SPIKE</li> <li>⊕ TELEPHONE PEDESTAL</li> <li>⊕ TRANSFORMER</li> <li>⊕ CABLE TV PEDESTAL</li> <li>○ UTILITY POLE</li> <li>○ WATER METER</li> <li>○ WATER VALVE</li> <li>○ YARD INLET</li> <li>( ) FIELD MEASUREMENT</li> </ul> |
|---|--|



**SETBACK INFO**

FRONT:	35'
REAR:	25'
SIDES:	10'
CORNER SIDE:	20'

NUM	RADIUS	ARC	DELTA	CHORD BRG	CHORD
C1	285.00'	292.36'	58°46'30"	S55°44'57"W	279.71'



INSET SCALE: 1"=30'

THIS AS-BUILT IS FOR CODE COMPLIANCE. NOT FOR SALES OR CONVEYANCE

WAKE COUNTY, NORTH CAROLINA

I CERTIFY THAT THIS MAP WAS DRAWN UNDER MY SUPERVISION FROM FIELDWORK DONE UNDER MY SUPERVISION; THAT THE IMPROVEMENTS LIE WHOLLY UPON THE LOT AND THAT THE PROPERTY SHOWN IS AN EXISTING PARCEL OR PARCELS OF LAND.

*Charles R. Piratzky*  
 CHARLES R. PIRATZKY, P.L.S.  
 L-2813

6-18-24  
 DATE



**REFERENCES:**

P.B. 2022, PGS 594-596



SCALE: 1" = 40'

**NOTES**

1. THIS SURVEY SUBJECT TO ANY FACTS THAT MAY BE DISCLOSED BY A FULL AND ACCURATE TITLE SEARCH.
2. THIS MAP MAY NOT BE A CERTIFIED SURVEY AND HAS NOT BEEN REVIEWED BY A LOCAL GOVERNMENT AGENCY FOR COMPLIANCE WITH ANY APPLICABLE LAND DEVELOPMENT REGULATIONS AND HAS NOT BEEN REVIEWED FOR COMPLIANCE WITH RECORDING REQUIREMENTS FOR PLATS.

DATE: MAY 31, 2024

Q:\Fieldloc\DNCK 170\_FDN.txt

**RWK, PA**  
 ENGINEERING ~ SURVEYING  
 CORPORATE LICENSE: C-1771  
 101 W. MAIN ST., SUITE 202  
 GARNER, NC 27529  
 PHONE (919) 779-4854  
 FAX (919) 779-4056