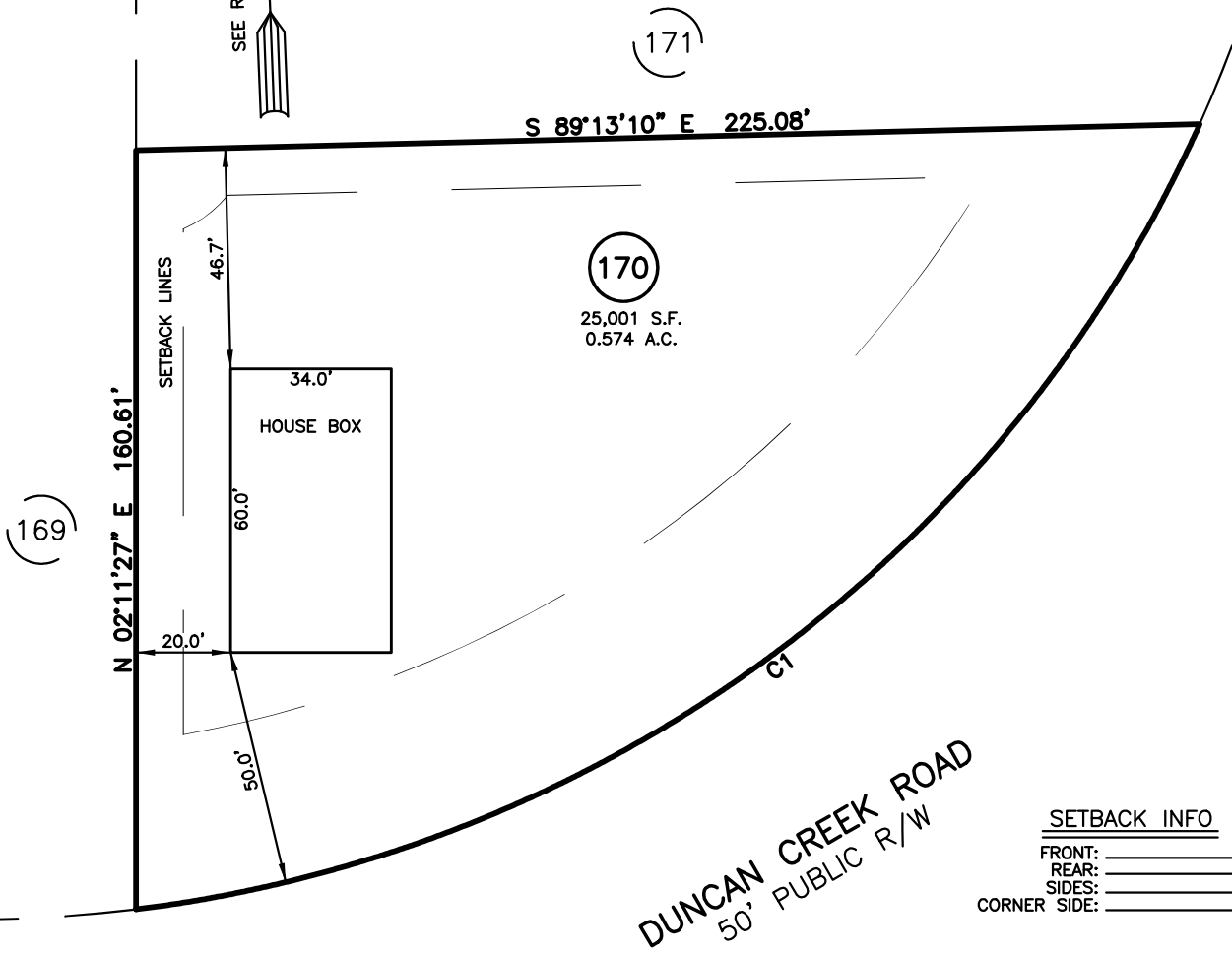


HOUSE FIT
NEW HOME, INC., LLC
 DUNCAN CREEK ROAD
 LOT 170, DUNCAN'S CREEK PHASE 1
 UPPER LITTLE CREEK TOWNSHIP, HARNETT COUNTY, NORTH CAROLINA

LEGEND

- | | | | |
|-----|----------------------------|------|------------------------|
| △ | AIR CONDITIONER | INV. | INVERT |
| BC | BACK of CURB | IPS | IRON PIPE SET |
| BFP | BACK FLOW PREVENTER | IRS | IRON ROD SET |
| ○ | CLEANOUT | ○ | LIGHT POLE |
| ■ | CURB INLET | MNS | MAGNETIC NAIL SET |
| DHS | DRILL HOLE SET | ⊗ | MANHOLE SANITARY SEWER |
| ECM | EXISTING CONCRETE MONUMENT | ⊗ | MANHOLE STORM SEWER |
| EDH | EXISTING DRILL HOLE | OHW | OVERHEAD WIRES |
| EIS | EXISTING IRON STAKE | PKS | PK NAIL SET |
| EIP | EXISTING IRON PIPE | PNS | POINT NOT SET |
| EM | ELECTRIC METER | RRS | RAIL ROAD SPIKE |
| EPK | EXISTING PK NAIL | TEL | TELEPHONE PEDESTAL |
| ES | ELECTRIC STUB | TRF | TRANSFORMER |
| ▽ | FLARED END SECTION | TV | CABLE TV PEDESTAL |
| ⊕ | FIRE HYDRANT | UT | UTILITY POLE |
| ⊕ | FIBER OPTIC PEDESTAL | WM | WATER METER |
| GM | GAS METER | WV | WATER VALVE |
| → | GUY | YI | YARD INLET |
| | | () | FIELD MEASUREMENT |



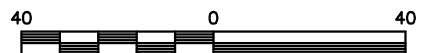
SETBACK INFO

- | | | |
|--------------|-------|-----|
| FRONT: | _____ | 35' |
| REAR: | _____ | 25' |
| SIDES: | _____ | 10' |
| CORNER SIDE: | _____ | 20' |

NUM	RADIUS	ARC	DELTA	CHORD BRG	CHORD
C1	285.00'	292.36'	58°46'30"	N 55°44'57" E	279.71'

REFERENCES:

P.B. 2022, PGS 594-596



SCALE: 1" = 40'

NOTES

1. THIS SURVEY SUBJECT TO ANY FACTS THAT MAY BE DISCLOSED BY A FULL AND ACCURATE TITLE SEARCH.
2. THIS MAP MAY NOT BE A CERTIFIED SURVEY AND HAS NOT BEEN REVIEWED BY A LOCAL GOVERNMENT AGENCY FOR COMPLIANCE WITH ANY APPLICABLE LAND DEVELOPMENT REGULATIONS AND HAS NOT BEEN REVIEWED FOR COMPLIANCE WITH RECORDING REQUIREMENTS FOR PLATS.

FOR REPRESENTATIVE PURPOSES ONLY
 NOT FOR PERMITTING, RECORDATION,
 CONVEYANCE OR SALES

HOUSE FIT
 ONLY

DATE: DEC. 15, 2023

F.B. _____

RWK, PA

ENGINEERING ~ SURVEYING

CORPORATE LICENSE: C-1771
 101 W. MAIN ST., SUITE 202
 GARNER, NC 27529
 PHONE (919) 779-4854
 FAX (919) 779-4056