

I, MICHAEL P. GRIFFIN, certify that under my direction and supervision this map was drawn from an actual field survey; that the error of closure of the survey as calculated by coordinates is 1: 10,000+; that the area shown hereon was calculated by coordinates.

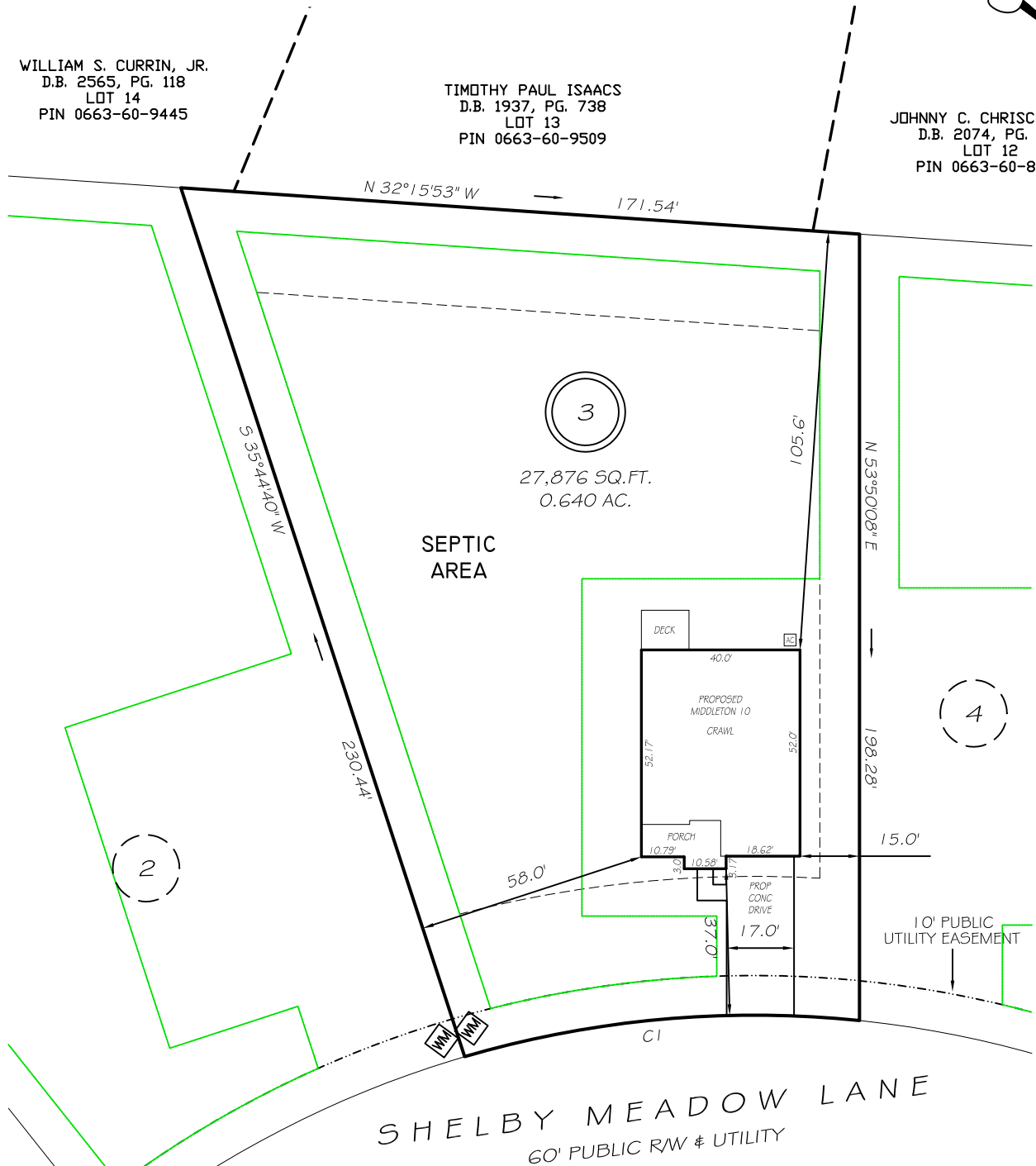
Witness my hand and seal this day of MONTH 2023.

BM 2023 PAGE 248-249
HARNETT CO. REGISTRY

WILLIAM S. CURRIN, JR.
D.B. 2565, PG. 118
LOT 14
PIN 0663-60-9445

TIMOTHY PAUL ISAACS
D.B. 1937, PG. 738
LOT 13
PIN 0663-60-9509

JOHNNY C. CHRISCOE, JR.
D.B. 2074, PG. 133
LOT 12
PIN 0663-60-8629



IMPERVIOUS AREAS

HOUSE	2115 SQ. FT.
DRIVE & WALKS	729 SQ. FT.
AVC PAD	9 SQ. FT.
TOTAL	2853 SQ. FT.
ALLOWED	4130 SQ. FT.
C1 R=260.00' L=100.63' S41°23'24"E 100.00'	

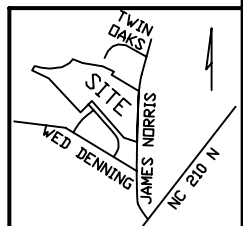
ZONING RA-30
SETBACKS

FRONT	35'
REAR	25'
SIDE	10'
CORNER SIDE	20'

REVISION: NEW PLANS 2/29/24
REVISION: NEW PLANS 2/7/24

LEGEND

EIP	EXISTING IRON PIPE	FES	FLARED END SECTION
IPS	IRON PIPE SET	WM	WATER METER
R/W	RIGHT OF WAY	CO	CLEAN OUT
N/F	NOW OR FORMERLY	FH	FIRE HYDRANT
EIS	EXISTING IRON STAKE	CB	CATCH BASIN



PRELIMINARY
NOT FOR RECORDATION,
SALES OR CONVEYANCE



GRIFFIN LAND SURVEYING, INC.

P.O. BOX 148
FUQUAY-VARINA, NC 27526
(919) - 567 - 1963

PLOT PLAN
FOR

DRB HOMES

HONEYCUTT HILLS

LOT 3

53 SHELBY MEADOW LANE

ANGIER, N.C.

HARNETT COUNTY BLACK RIVER TOWNSHIP

DRAWN BY KDF

DATE 6/27/23

CHECKED BY MPG

SCALE 1" = 40'