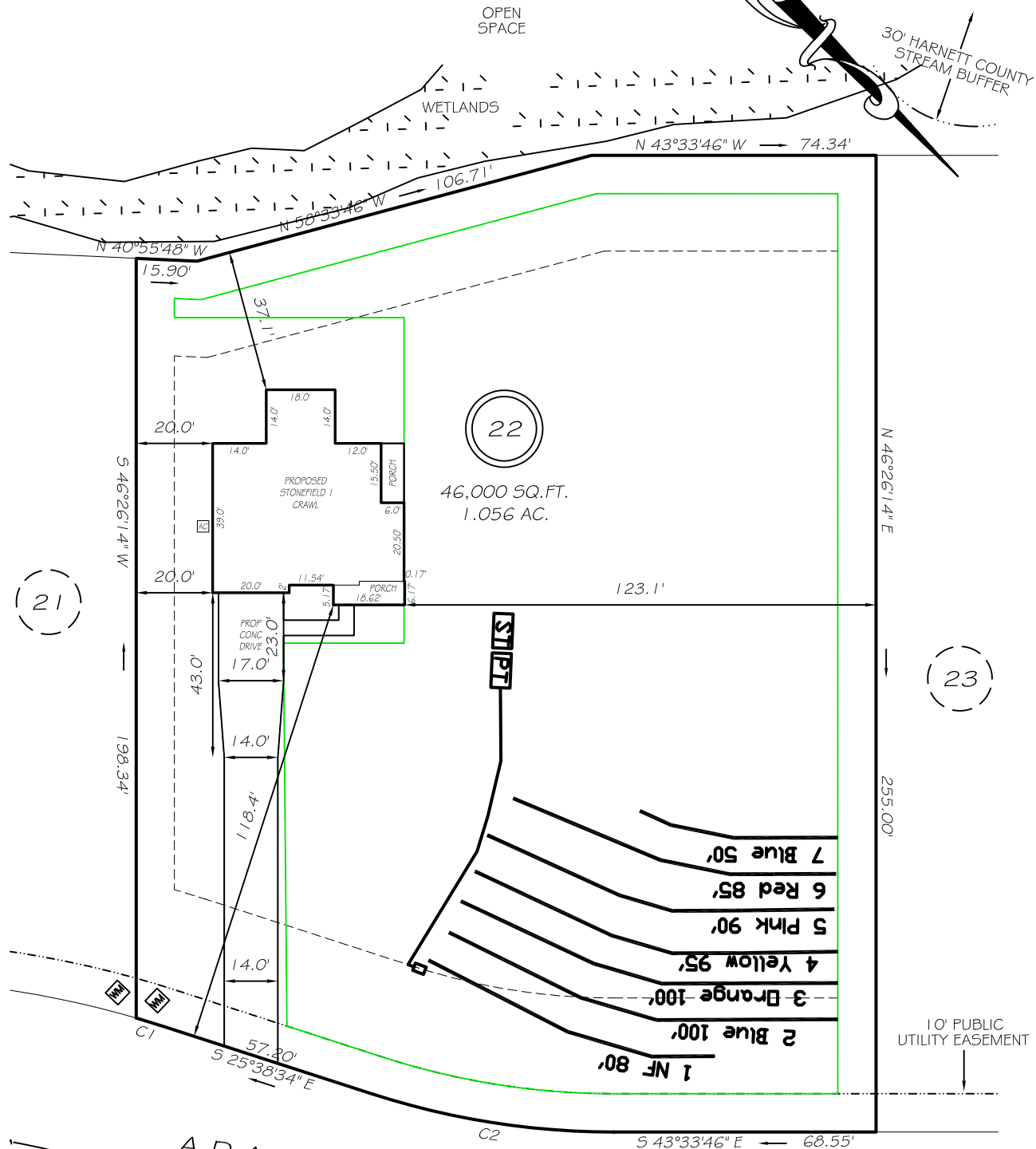


I, MICHAEL P. GRIFFIN, certify that under my direction and supervision this map was drawn from an actual field survey; that the error of closure of the survey as calculated by coordinates is 1: 10,000+; that the area shown hereon was calculated by coordinates.

Witness my hand and seal this day of MONTH 2024.

BM 2023 PAGE 248-249  
HARNETT CO. REGISTRY



HOUSE	2238 SQ. FT.
DRIVE & WALKS	1877 SQ. FT.
A/C PAD	9 SQ. FT.
<b>TOTAL</b>	<b>4124 SQ. FT.</b>
ALLOWED	4130 SQ. FT.
C1 R=255.00' L=7.59' S26°29'41"E 7.58'	
C2 R=205.00' L=64.12' S34°36'10"E 63.86'	

ADAMS POINTE COURT  
50' PUBLIC RW & UTILITY

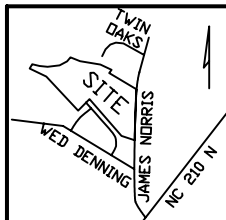
ZONING RA-30  
SETBACKS

FRONT	35'
REAR	25'
SIDE	10'
CORNER SIDE	20'

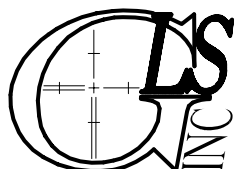
REVISION: MOVE RIGHT 3/12/24

LEGEND

EIP	EXISTING IRON PIPE	FES	FLARED END SECTION
IPS	IRON PIPE SET	WM	WATER METER
R/W	RIGHT OF WAY	CO	CLEAN OUT
N/F	NOW OR FORMERLY	FH	FIRE HYDRANT
EIS	EXISTING IRON STAKE	CB	CATCH BASIN



**PRELIMINARY**  
NOT FOR RECORDATION,  
SALES OR CONVEYANCE



GRIFFIN LAND SURVEYING, INC.

P. O. BOX 148  
FUQUAY-VARINA, NC 27526  
(919) - 567 - 1963

PLOT PLAN  
FOR

**DRB HOMES**

HONEYCUTT HILLS

LOT 22

ADAMS POINTE COURT

ANGIER, N.C.

HARNETT COUNTY BLACK RIVER TOWNSHIP

DRAWN BY **KDF**

DATE **3/12/24**

CHECKED BY **MPG**

SCALE **1" = 40'**