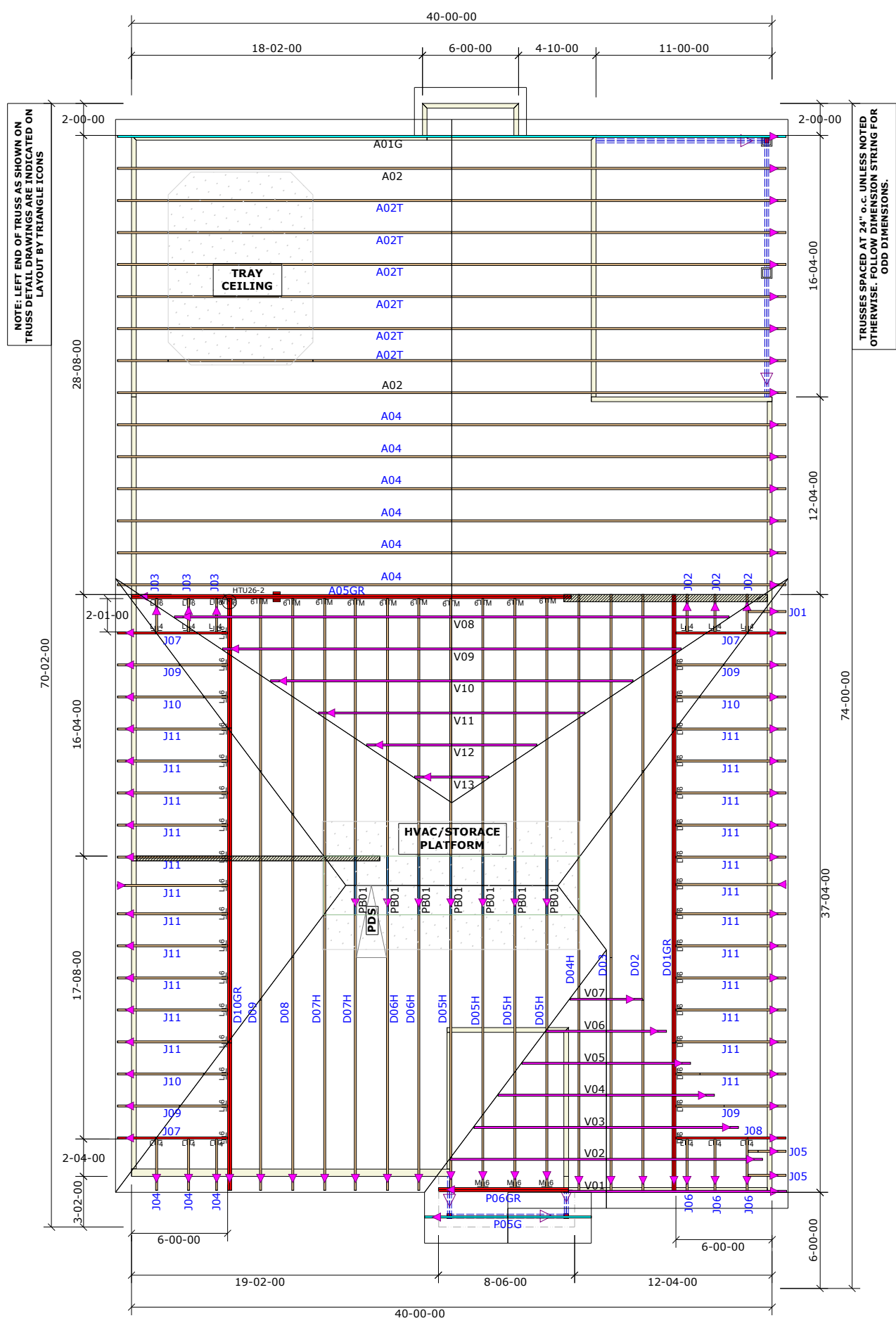
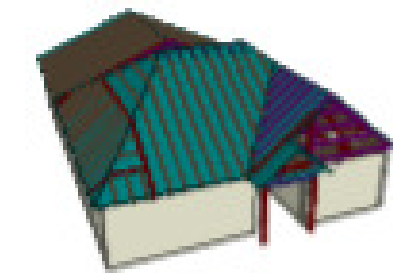


General Notes:
 - Per ANSI/TPI 1-2002 all "Truss to Wall" connections are the responsibility of the Building Designer, not the Truss Manufacturer.
 - Dimensions are Feet-Inches- Sixteenths.
 - Trusses are to be 24" o.c. unless noted otherwise (U.N.O.)
 - Trusses are not designed to support brick U.N.O.

- Do not cut or modify trusses without first contacting Builders FirstSource.
 - Immediately contact Builders FirstSource if trusses are damaged.
Connection Notes:
 - All hangers are to be Simpson or equivalent U.N.O.
 - Use Manufacturer's specifications for all hanger connections U.N.O.
 - Use 10d x 1 1/2" Nails in hanger connections to single ply roof girder trusses.

Floor Notes:
 - Shift truss as required to avoid plumbing traps.
 - Installation Contractor and/or Field Supervisor are to verify all dimensions, trap locations, and options prior to installation

Dimension Notes:
 - Drawing not to scale. Do not scale dimensions



NOTE: LEFT END OF TRUSS AS SHOWN ON TRUSS DETAIL DRAWINGS ARE INDICATED ON LAYOUT BY TRIANGLE ICONS

TRUSSES SPACED AT 24" o.c. UNLESS NOTED OTHERWISE. FOLLOW DIMENSION STRING FOR ODD DIMENSIONS.

Hanger List		All Tie Downs H2.5T Unless noted	
12	LUS24	U14	
13	HTU26	M16	
36	LUS26	U16	
1	HTU26-2	U16	

Special Items List	

Misc Material	

Chesapeake Homes			
307	Elev:	C	
Farm @ Neills Creek			
Harnett County	NC	Lot:	133
Master Tray/Fireplace/Screen Porch/Garage Left		Appwright #	
		Permit (3959709)	
		Code: IRC 2015	
		Loading:	
		T.C.L.L.	20
		T.C.D.L.	10
		B.C.L.L.	0
		B.C.D.L.	10
Designed By: CFC		Wind:	
Layout: C-MTFPSP-L		M.P.H. 120	
L/O Date: 04/06/2024		Exposure Category	
		B (Wooded areas/other)	
Pick Ticket: ---		Job No.: ---	
Sales No.: ---		Acct No.: ---	

Hatch Legend	
	Attic Room
	Volume Ceiling
	Stick Framing