

I, MICHAEL P. GRIFFIN, certify that under my direction and supervision this map was drawn from an actual field survey; that the error of closure of the survey as calculated by coordinates is 1: 10,000+; that the area shown hereon was calculated by coordinates.

Witness my hand and seal this day of MONTH 2023.

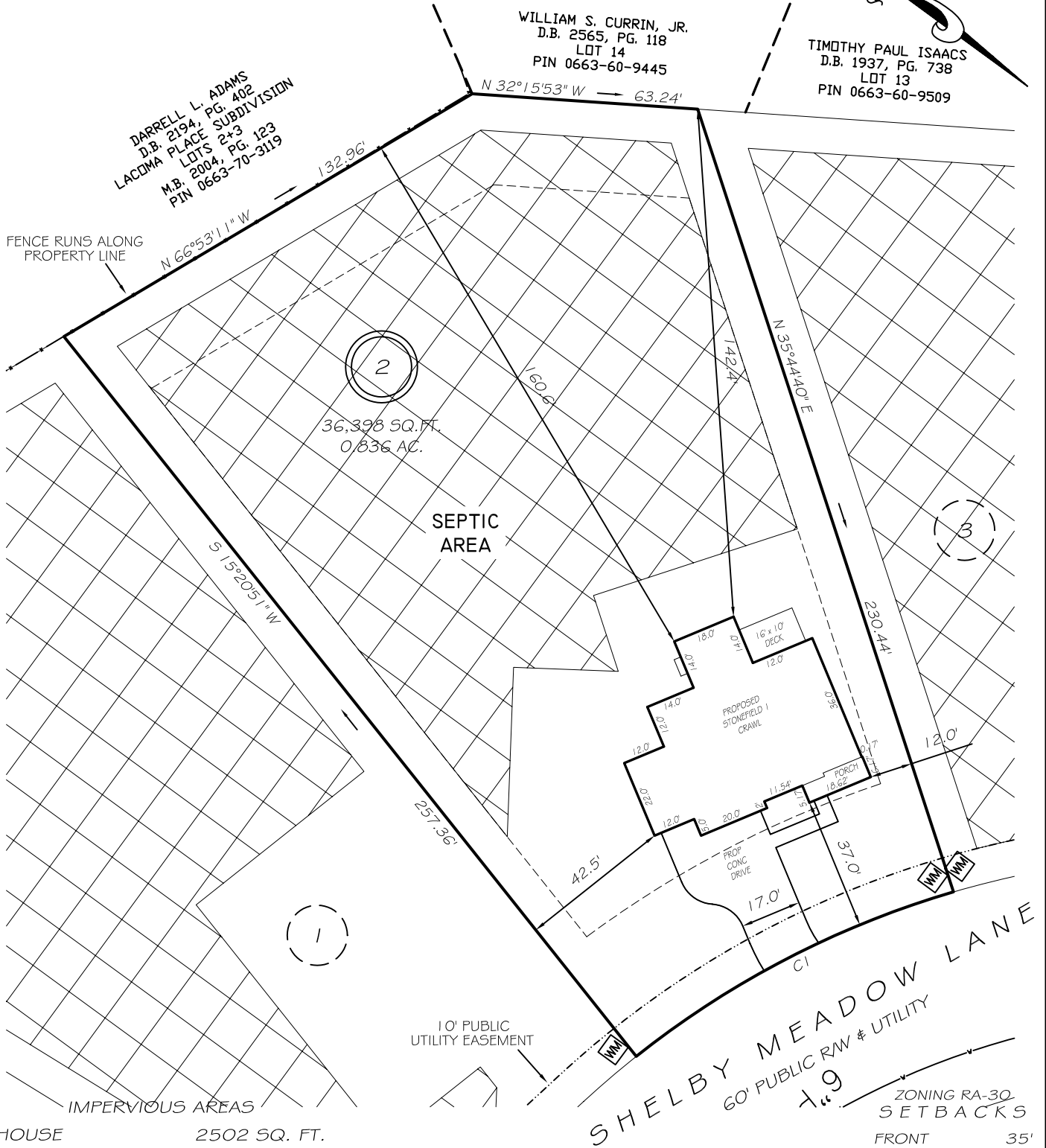
BM 2023 PAGE 248-249  
HARNETT CO. REGISTRY

TIMOTHY PAUL ISAACS  
D.B. 1937, PG. 738  
LOT 13  
PIN 0663-60-9509

WILLIAM S. CURRIN, JR.  
D.B. 2565, PG. 118  
LOT 14  
PIN 0663-60-9445

DARRELL L. ADAMS  
D.B. 2194, PG. 402  
LACINA PLACE SUBDIVISION  
LOTS 2+3  
M.B. 2004, PG. 123  
PIN 0663-70-3119

FENCE RUNS ALONG PROPERTY LINE



HOUSE	2502 SQ. FT.
DRIVE & WALKS	1048 SQ. FT.
PATIO	0 SQ. FT.
<b>TOTAL</b>	<b>3550 SQ. FT.</b>
ALLOWED	4130 SQ. FT.

C1 R=260.00' L=100.63' S63°33'54"E 100.00'

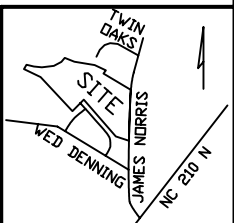
REVISION: NEW PLANS 2/7/24

**LEGEND**

EIP	EXISTING IRON PIPE	FES	FLARED END SECTION
IPS	IRON PIPE SET	WM	WATER METER
R/W	RIGHT OF WAY	CO	CLEAN OUT
N/F	NOW OR FORMERLY	FH	FIRE HYDRANT
EIS	EXISTING IRON STAKE	CB	CATCH BASIN

ZONING RA-30  
SETBACKS

FRONT	35'
REAR	25'
SIDE	10'
CORNER SIDE	20'



**P R E L I M I N A R Y**  
NOT FOR RECORDATION,  
SALES OR CONVEYANCE



**GRIFFIN LAND SURVEYING, INC.**  
P.O. BOX 148  
FUQUAY-VARINA, NC 27526  
(919) - 567 - 1963

**PLOT PLAN**  
FOR  
**DRB HOMES**

HONEYCUTT HILLS

LOT 2

37 SHELBY MEADOW LANE

ANGIER, N.C.

HARNETT COUNTY BLACK RIVER TOWNSHIP

DRAWN BY KDF

DATE 6/27/23

CHECKED BY MPG

SCALE 1" = 40'