

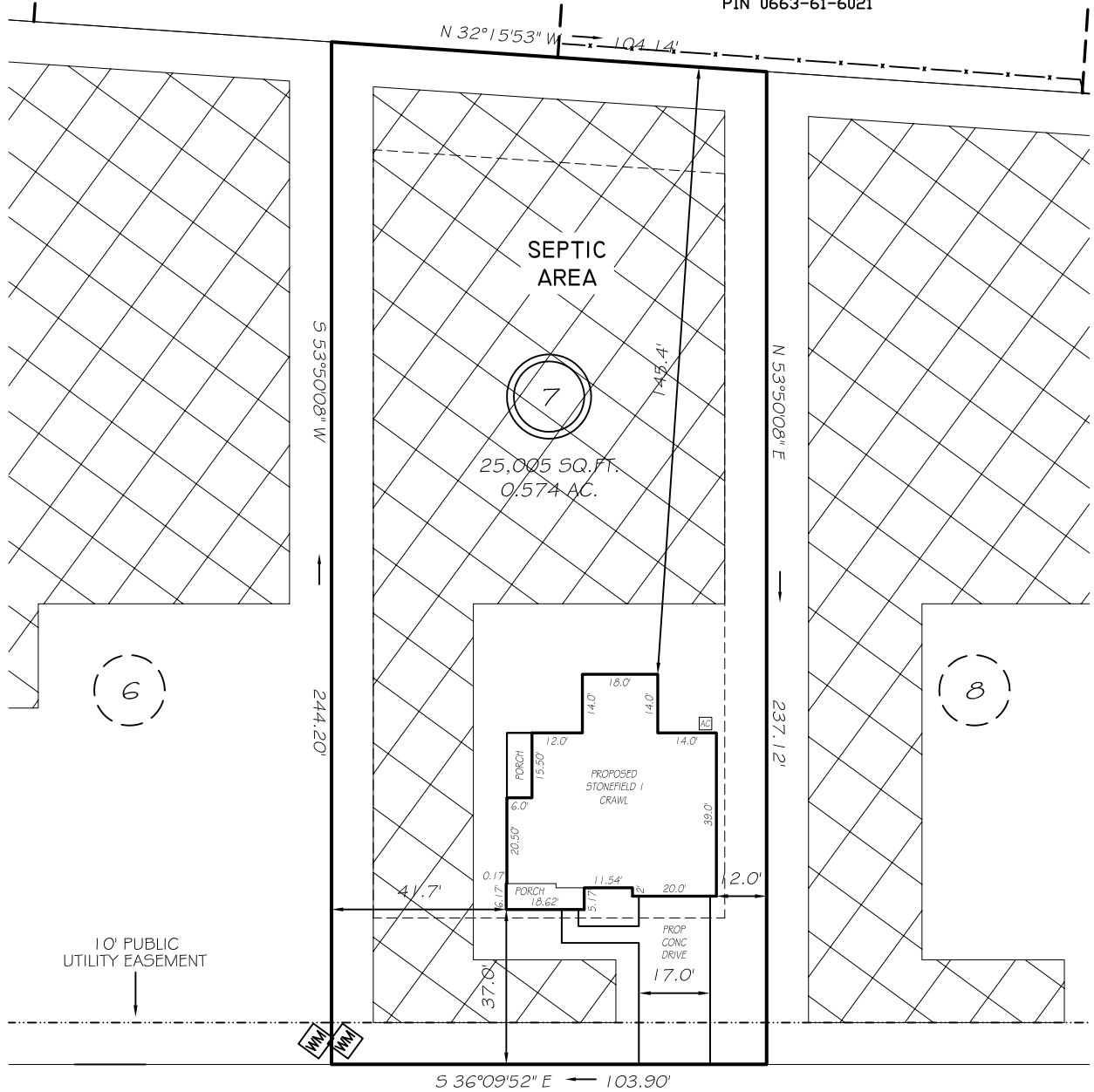
I, MICHAEL P. GRIFFIN, certify that under my direction and supervision this map was drawn from an actual field survey; that the error of closure of the survey as calculated by coordinates is 1: 10,000+; that the area shown hereon was calculated by coordinates.

Witness my hand and seal this day of MONTH 2024.

BM 2023 PAGE 248-249  
HARNETT CO. REGISTRY

DAVID L. SMITH  
D.B. 3388, PG. 577  
LOT 10  
PIN 0663-60-6980

SANDRA M. STILES  
D.B. 3258, PG. 719  
LOT 9  
PIN 0663-61-6021



SHELBY MEADOW LANE

ZONING RA-30  
SETBACKS

IMPERVIOUS AREAS	
HOUSE	2238 SQ. FT.
DRIVE & WALKS	773 SQ. FT.
AC PAD	9 SQ. FT.
<b>TOTAL</b>	<b>3020 SQ. FT.</b>
<b>ALLOWED</b>	<b>4130 SQ. FT.</b>

60' PUBLIC RAW & UTILITY

FRONT	35'
REAR	25'
SIDE	10'
CORNER SIDE	20'

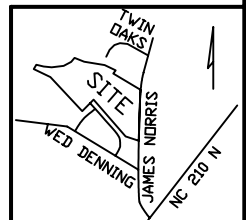
REVISION: MOVE AC 3/20/24

PRELIMINARY

NOT FOR RECORDATION,  
SALES OR CONVEYANCE

LEGEND

EIP	EXISTING IRON PIPE	FES	FLARED END SECTION
IPS	IRON PIPE SET	WM	WATER METER
RAW	RIGHT OF WAY	CO	CLEAN OUT
N/F	NOW OR FORMERLY	FH	FIRE HYDRANT
EIS	EXISTING IRON STAKE	CB	CATCH BASIN



GRIFFIN LAND SURVEYING, INC.

P. O. BOX 148  
FUQUAY-VARINA, NC 27526  
(919) - 567 - 1963

PLOT PLAN  
FOR

**DRB HOMES**

HONEYCUTT HILLS

LOT 7

135 SHELBY MEADOW LANE

ANGIER, N.C.

HARNETT COUNTY BLACK RIVER TOWNSHIP

DRAWN BY KDF

DATE 3/18/24

CHECKED BY MPG

SCALE 1" = 40'