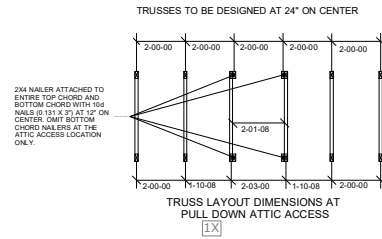


Truss Connector Total List		
Qty	Product	Manuf
7	HUS26	Simpson

THE PURPOSE OF THIS DETAIL IS TO ILLUSTRATE HOW TO PROPERLY SPACE 24" O.C. ROOF TRUSSES TO ALLOW FOR A 25 1/2" OPENING FOR PULL DOWN ATTIC ACCESS



84 Components  
 200 Emmett Rd  
 Dunn NC 28334  
 United States  
 Office: 770-787-8715

**KB HOMES**  
**135 BIRCHWOOD GROVE**

**135 BIRCHWOOD GROVE**

**Job# - 2401099**

Location	2383-Dunn* (Differs)
Designer	INIT

DO NOT CUT, NOTCH, OR BORE HOLES UNLESS SPECIFIC WRITTEN PERMISSION IS PROVIDED BY AN AUTHORIZED REPRESENTATIVE OF 84 LUMBER.

TRUSS INSTALLATION REQUIRES TEMPORARY AND PERMANENT BRACING. GENERAL GUIDANCE IS PROVIDED IN SBCA DOC'S B-1 and B-3. THESE ARE INCLUDED WITH EACH JOB IN YOUR TRUSS PACKET.

Sheet # **1** of **1**

**Roof Truss Placement Plan**

NOT TO SCALE

DESIGNED DATE

4/1/2024