

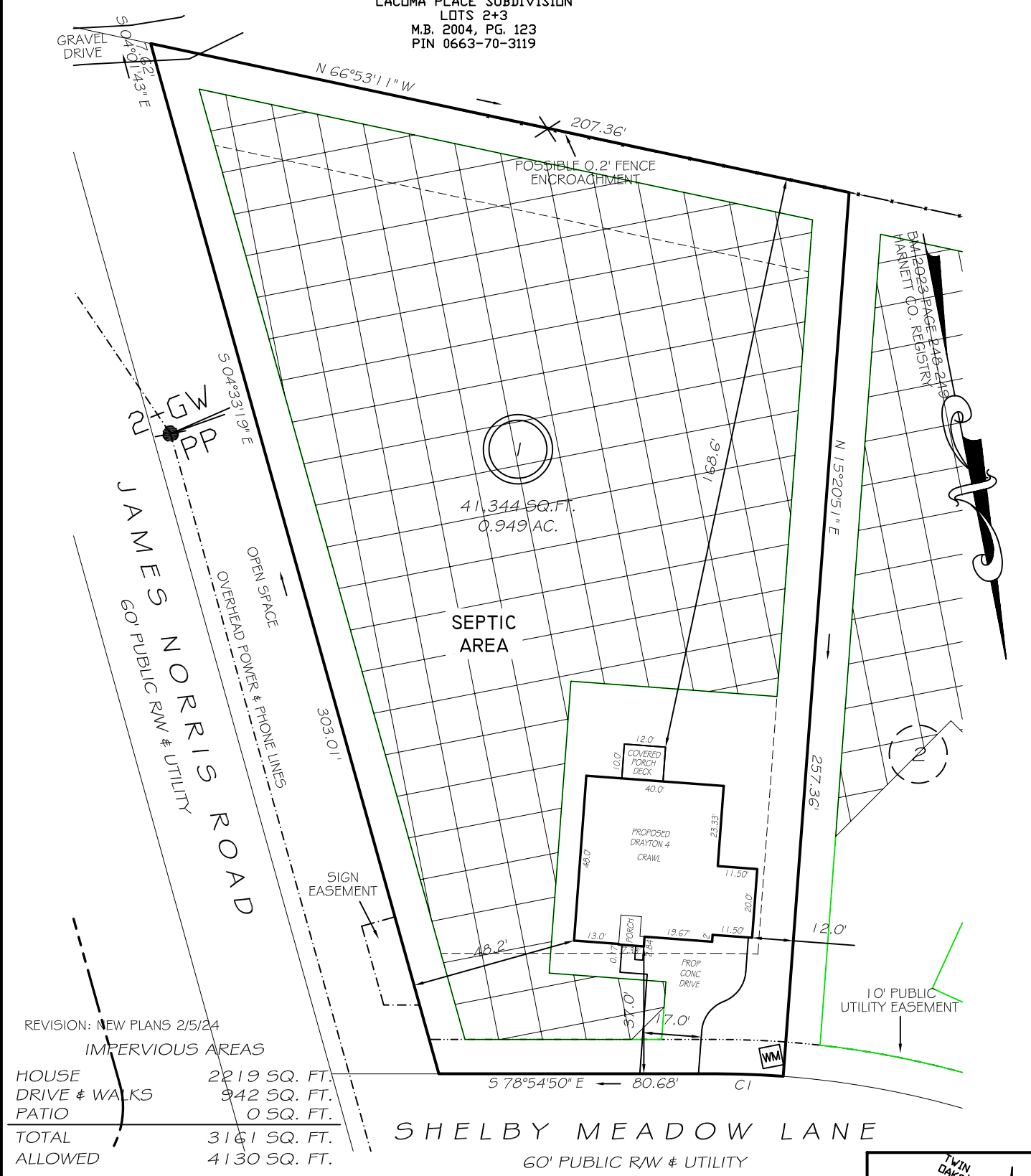
ZONING RA-30  
SETBACKS

FRONT 35'  
REAR 25'  
SIDE 10'  
CORNER SIDE 20'

I, MICHAEL P. GRIFFIN, certify that under my direction and supervision this map was drawn from an actual field survey; that the error of closure of the survey as calculated by coordinates is 1: 10,000+; that the area shown hereon was calculated by coordinates.

Witness my hand and seal this day of MONTH 2023.

DARRELL L. ADAMS  
D.B. 2194, PG. 402  
LACOMA PLACE SUBDIVISION  
LOTS 2+3  
M.B. 2004, PG. 123  
PIN 0663-70-3119



REVISION: NEW PLANS 2/5/24

IMPERVIOUS AREAS

HOUSE	2219 SQ. FT.
DRIVE & WALKS	942 SQ. FT.
PATIO	0 SQ. FT.
<b>TOTAL</b>	<b>3161 SQ. FT.</b>
ALLOWED	4130 SQ. FT.

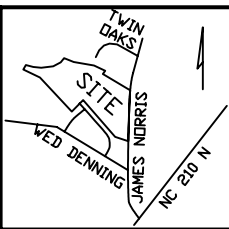
CI R=260.00' L=19.34' S76°46'59"E 19.33'

SHELBY MEADOW LANE

60' PUBLIC RW & UTILITY

LEGEND

EIP	EXISTING IRON PIPE	FES	FLARED END SECTION
IPS	IRON PIPE SET	WM	WATER METER
R/W	RIGHT OF WAY	CO	CLEAN OUT
N/F	NOW OR FORMERLY	FH	FIRE HYDRANT
EIS	EXISTING IRON STAKE	CB	CATCH BASIN



**PRELIMINARY**  
NOT FOR RECORDATION,  
SALES OR CONVEYANCE



GRIFFIN LAND SURVEYING, INC.

P. O. BOX 148  
FUQUAY-VARINA, NC 27526  
(919) - 567 - 1963

DRAWN BY KDF

DATE 6/27/23

CHECKED BY MPG

SCALE 1" = 40'

PLOT PLAN FOR  
**DRB HOMES**

HONEYCUTT HILLS

LOT 1

17 SHELBY MEADOW LANE

ANGIER, N.C.

HARNETT COUNTY BLACK RIVER TOWNSHIP