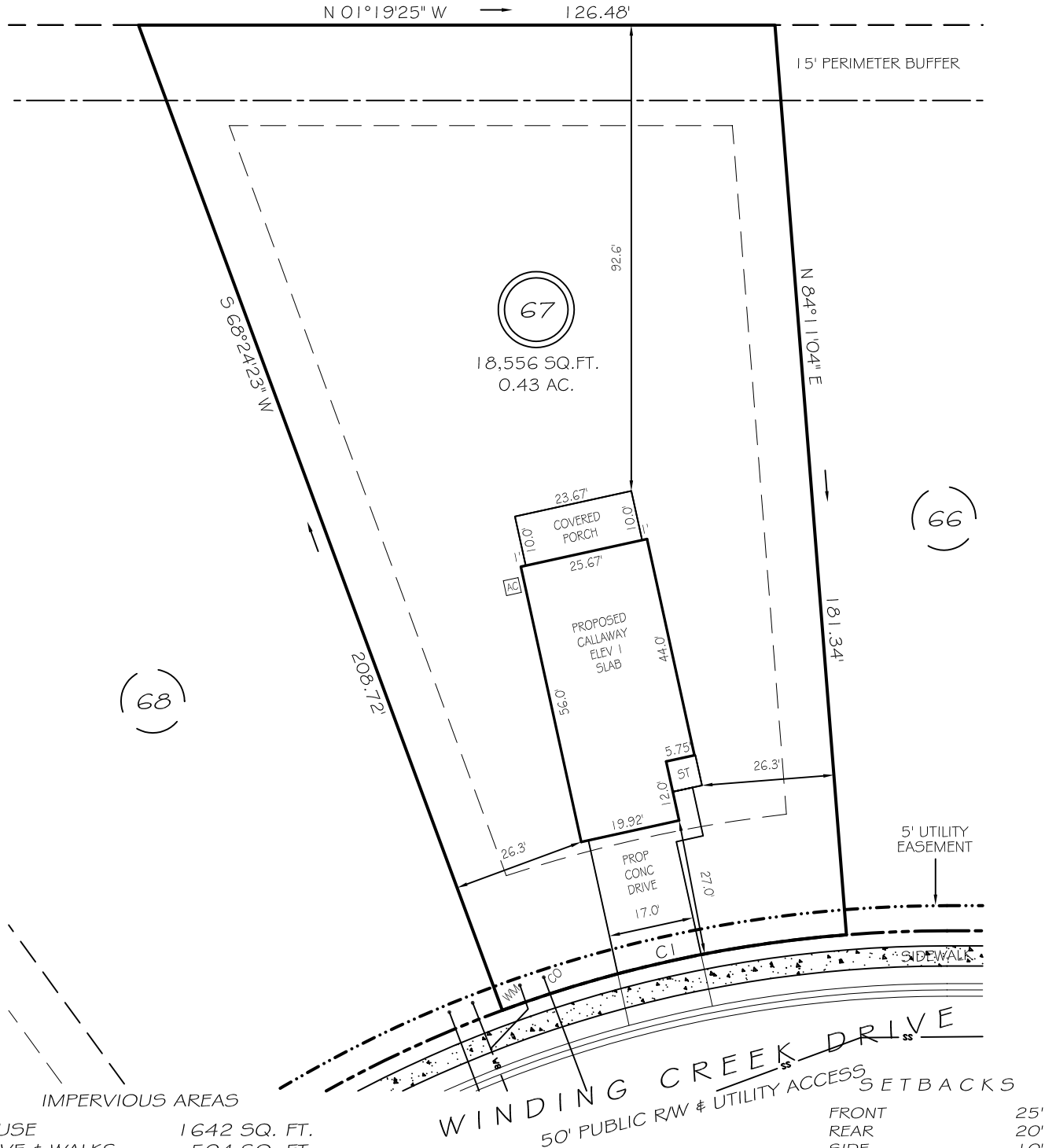


I, MICHAEL P. GRIFFIN, certify that under my direction and supervision this map was drawn from an actual field survey; that the error of closure of the survey as calculated by coordinates is 1: 10,000+; that the area shown hereon was calculated by coordinates.

Witness my hand and seal this day of MONTH 2024.

BK 2023 PGS 658-660  
HARNETT CO. REGISTRY

N / F  
TRAVIS WESTER  
ESTATE 92E, PG 105  
DB 304, PG 30  
PB 2021, PG 41



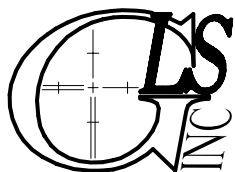
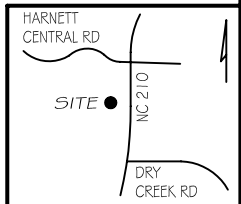
HOUSE	1642 SQ. FT.
DRIVE & WALKS	504 SQ. FT.
AC PAD	9 SQ. FT.
<b>TOTAL</b>	<b>2155 SQ. FT.</b>
ALLOWED	3800 SQ. FT.

FRONT	25'
REAR	20'
SIDE	10'
CORNER SIDE	20'

CI R=255.00' L=70.22' S13°42'17"E 70.00'

**PRELIMINARY**  
NOT FOR RECORDATION,  
SALES OR CONVEYANCE

EIP	EXISTING IRON PIPE	FES	FLARED END SECTION
IPS	IRON PIPE SET	WM	WATER METER
R/W	RIGHT OF WAY	CO	CLEAN OUT
N/F	NOW OR FORMERLY	FH	FIRE HYDRANT
EIS	EXISTING IRON STAKE	CB	CATCH BASIN



**GRIFFIN LAND SURVEYING, INC.**

P. O. BOX 148  
FUQUAY-VARINA, NC 27526  
(919) - 567 - 1963

**PLOT PLAN**  
FOR  
**DRB HOMES**  
THE FARM AT  
NEILLS CREEK  
**LOT 67**

361 WINDING CREEK DRIVE  
NORTH CAROLINA  
HARNETT COUNTY NEILL'S CREEK TWSHP

DRAWN BY KDF

DATE 3/22/24

CHECKED BY MPG

SCALE 1" = 30'