

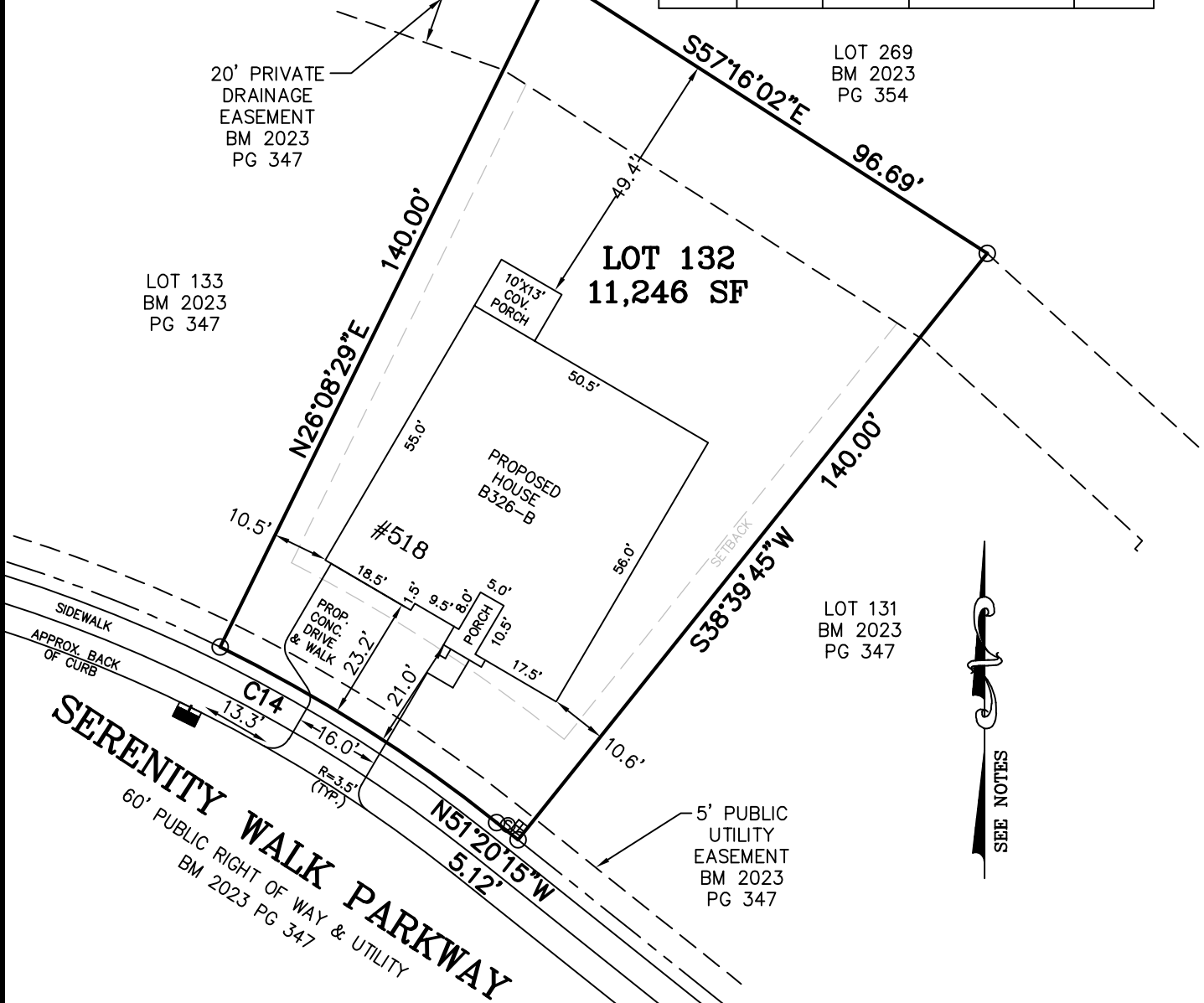
LEGEND

- MATHEMATICAL POINT
- CONTROL CORNER
- ⊞ WATER METER
- ⊙ SEWER CLEAN OUT
- ⊗ FIRE HYDRANT

N/F GREENFIELD SERENITY
 DB 3962, PG 793
 SERENITY LOT 2
 BM 2021 PG 21-26
 BM 2022 PG 45-50

CURVE TABLE				
CURVE	LENGTH	RADIUS	CHORD BEARING	CHORD
C14	61.19'	280.00'	N57°35'53"W	61.07'

VICINITY MAP (NTS)



20' PRIVATE DRAINAGE EASEMENT
 BM 2023 PG 347

LOT 133
 BM 2023 PG 347

LOT 132
 11,246 SF

LOT 269
 BM 2023 PG 354

LOT 131
 BM 2023 PG 347

SEE NOTES

NOTES:
 -REFERENCE HARNETT CO. BM 2023, PG 343-349 FOR BOUNDARY INFORMATION, NORTH INDEX & TIE LINES TO SUBDIVISION CONTROL CORNERS.
 -ZONED: RA-30, RA-40, & CONSERVATION.
 -SETBACKS, PER BM 2023 PG 343:
 >43' LOT WIDTH:
 FRONT YARD-20', SIDE YARD-5', REAR YARD-20', CORNER YARD-12'.
 -PROPERTY IS NOT LOCATED WITHIN A SPECIAL FLOOD HAZARD AREA AS SCALED FROM THE NFIP FIRM No. 3720065500L (EFFECTIVE DATE: JULY 19, 2022) AND/OR 3720064500J (EFFECTIVE DATE: 10/3/2006).

MAXIMUM ALLOWABLE IMPERVIOUS-3,700 SF

TOTAL ESTIMATED IMPERVIOUS-3,557 SF	
SITE	SQ. FT.
HOUSE	2,801
DRIVEWAY	587
LEAD WALK	30
COV. PORCH	130
A/C PAD	9

PERMIT PLAN LOT: 132

SERENITY SUBDIVISION, PHASE 1D
 HECTORS CREEK TOWNSHIP, HARNETT COUNTY, NC

SURVEYED FOR
DAVID WEEKLEY HOMES
 1901 N. HARRISON AVENUE, SUITE 200
 CARY, NC 27513



MSS LAND CONSULTANTS, PC
 "Committed to Total Quality Service"
 Firm License: C-2070
 EST. 1998

6118 St. Giles St Phone (919) 510-4464
 (Suite E) Fax (919) 510-9102
 Raleigh, NC 27612 Email: gowersw@mssland.com

I HEREBY CERTIFY THAT THE BUILDING WILL LIE WHOLLY ON THE LOT. THIS PLAT IS OF AN EXISTING PARCEL OF LAND. THIS IS NOT A SURVEY AND NOT FOR RECORDATION PURPOSES.

PRELIMINARY PLAN

WADE A. GOWERS, PLS L-4639

O:\DWHOMES\IDWH-22-02.dwg (132.dwg) Layout1, 3/8/2024 3:09:43 PM, crawfordc, 1:1