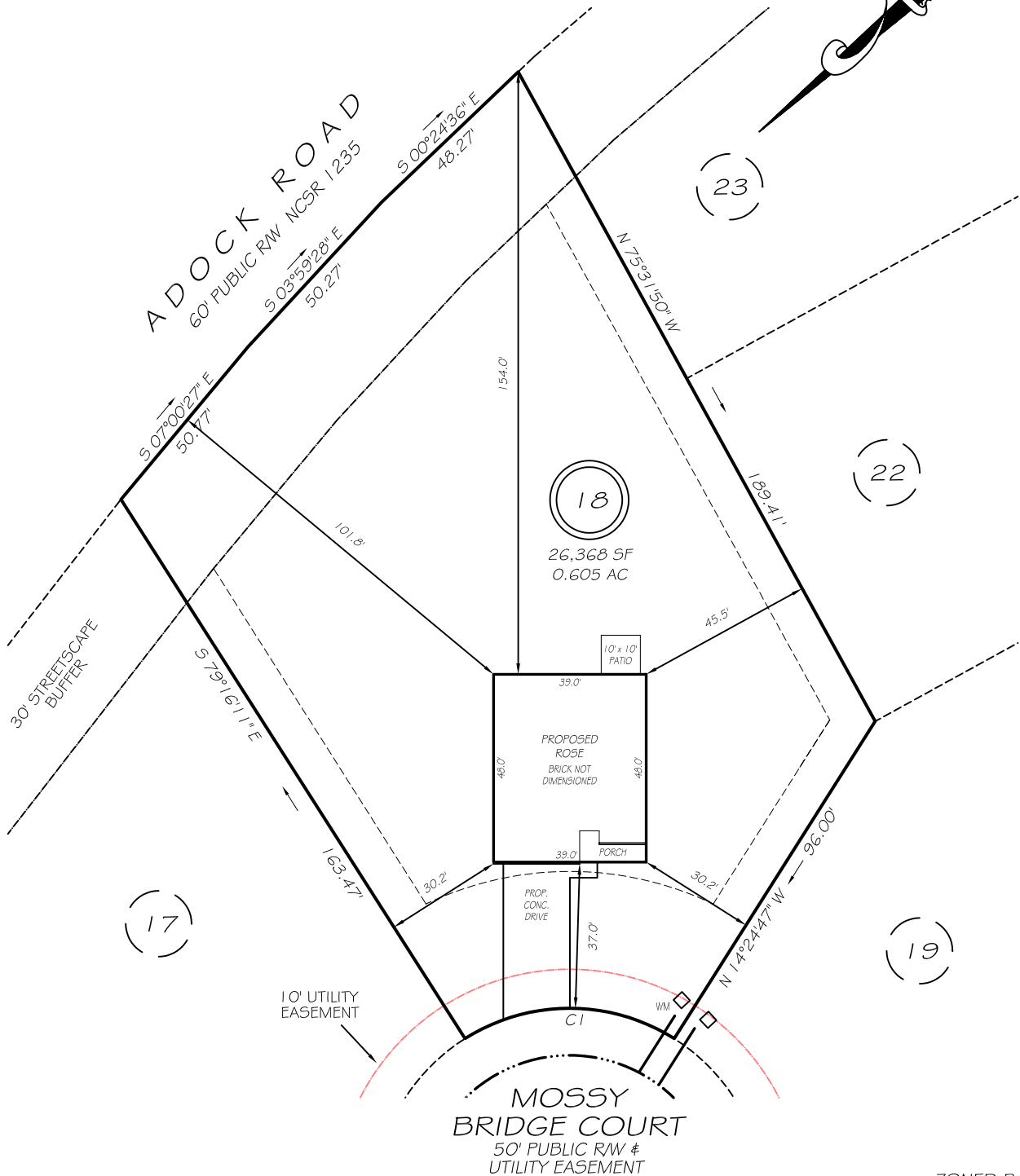
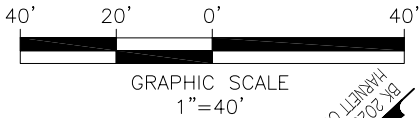


I, MICHAEL P. GRIFFIN, certify that under my direction and supervision this map was drawn from an actual field survey; that the error of closure of the survey as calculated by coordinates is 1: 10,000+; that the area shown hereon was calculated by coordinates. Dashed lines shown hereon were not surveyed.

Witness my hand and seal this day of MONTH 2024.



IMPERVIOUS AREAS

HOUSE	1881 SQ. FT.
DRIVE & WALKS	672 SQ. FT.
PATIO	100 SQ. FT.
TOTAL	2653 SQ. FT.
ALLOWED	9932 SQ. FT.

CI R=50.00' L=56.42' S43°15'30"W 53.48'

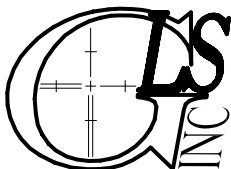
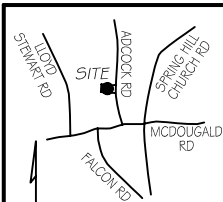
ZONED RA-30  
SETBACKS

FRONT	35'
REAR	25'
SIDE	10'
CORNER SIDE	20'

PRELIMINARY  
NOT FOR RECORDATION,  
SALES OR CONVEYANCE

LEGEND

EIP	EXISTING IRON PIPE	FES	FLARED END SECTION
IPS	IRON PIPE SET	WM	WATER METER
R/W	RIGHT OF WAY	CO	CLEAN OUT
N/F	NOW OR FORMERLY	FH	FIRE HYDRANT
EIS	EXISTING IRON STAKE	CB	CATCH BASIN



GRIFFIN LAND SURVEYING, INC.

P. O. BOX 148  
FUQUAY-VARINA, NC 27526  
(919) - 567 - 1963

FIRM LIC.# C-1345

PLOT PLAN  
FOR

A & G RESIDENTIAL

JONES CREEK MEADOWS

LOT 18

JONES CREEK LANE

FOUR OAKS, N.C.

HARNETT COUNTY UPPER LITTLE RIVER TOWNSHIP

DRAWN BY KDF

DATE 3/7/24

CHECKED BY MPG

SCALE 1" = 40'