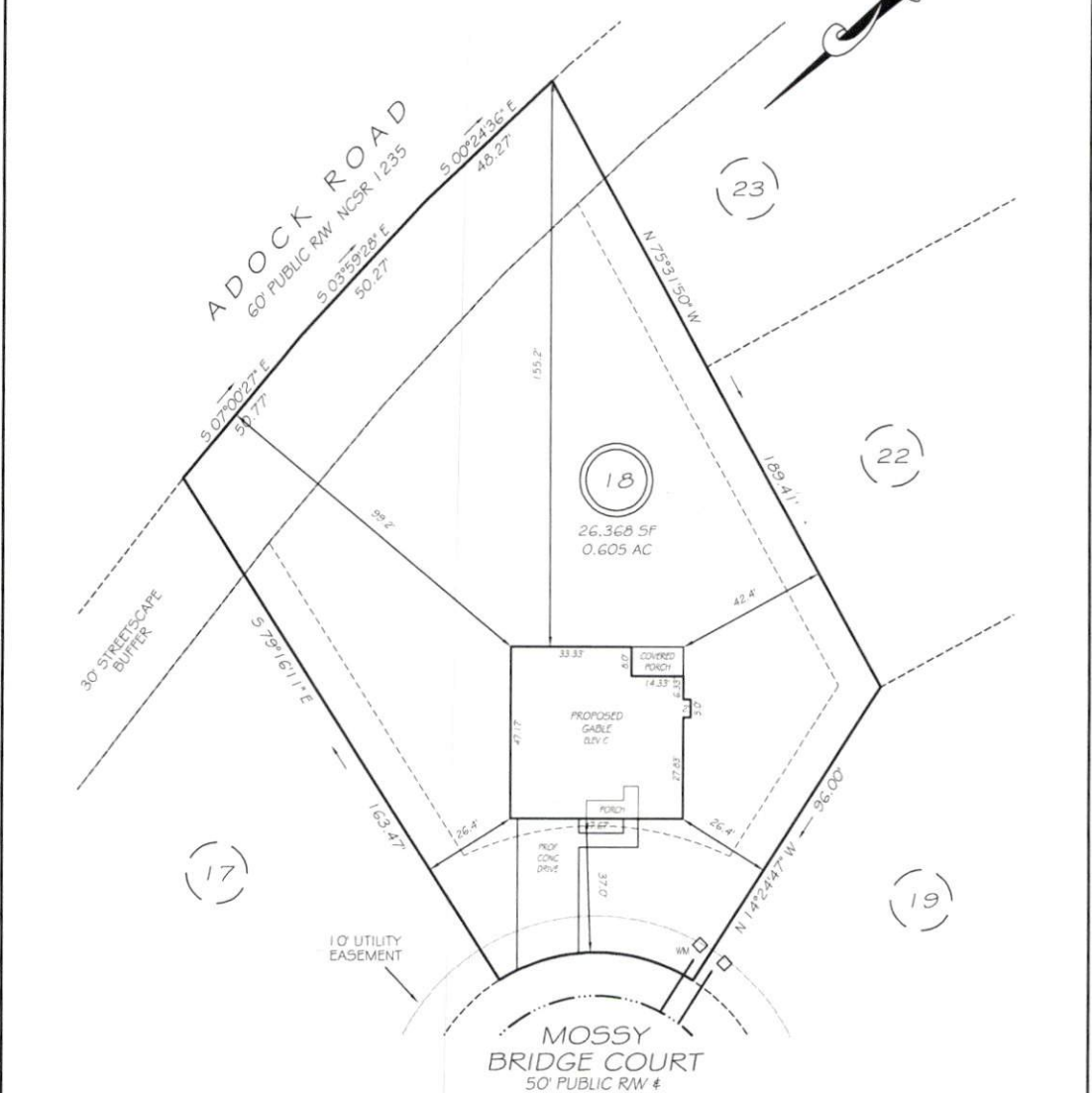


I, MICHAEL P. GRIFFIN, certify that under my direction and supervision this map was drawn from an actual field survey; that the error of closure of the survey as calculated by coordinates is 1: 10,000+; that the area shown hereon was calculated by coordinates.
 Witness my hand and seal this day of MONTH 2024.

MICHAEL P. GRIFFIN
 1972-2002, 024, F202-30



IMPERVIOUS AREAS

HOUSE	2258 SQ. FT.
DRIVE & WALKS	745 SQ. FT.
PATIO	0 SQ. FT.
TOTAL	3003 SQ. FT.
ALLOWED	9932 SQ. FT.

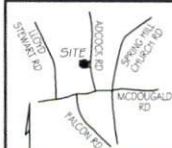
ZONED RA-30
 SETBACKS

FRONT	35'
REAR	25'
SIDE	10'
CORNER SIDE	20'

PRELIMINARY
 NOT FOR RECORDATION,
 SALES OR CONVEYANCE

LEGEND

EIP	EXISTING IRON PIPE	FES	FLARED END SECTION
IPS	IRON PIPE SET	WM	WATER METER
R/W	RIGHT OF WAY	CO	CLEAN OUT
N/F	NOW OR FORMERLY	FH	FIRE HYDRANT
EIS	EXISTING IRON STAKE	CB	CATCH BASIN



GLS GRIFFIN LAND SURVEYING, INC.
 P.O. BOX 148
 FUQUAY-VARINA, NC 27526
 (919) - 567-1963

PLOT PLAN
 FOR
A & G RESIDENTIAL
 JONES CREEK MEADOWS
 LOT 18
 JONES CREEK LANE
 FOUR OAKS, N.C.
 HARNETT COUNTY UPPER LITTLE RIVER TOWNSHIP

DRAWN BY KDF	DATE 3/7/24
CHECKED BY MPG	SCALE 1" = 40'