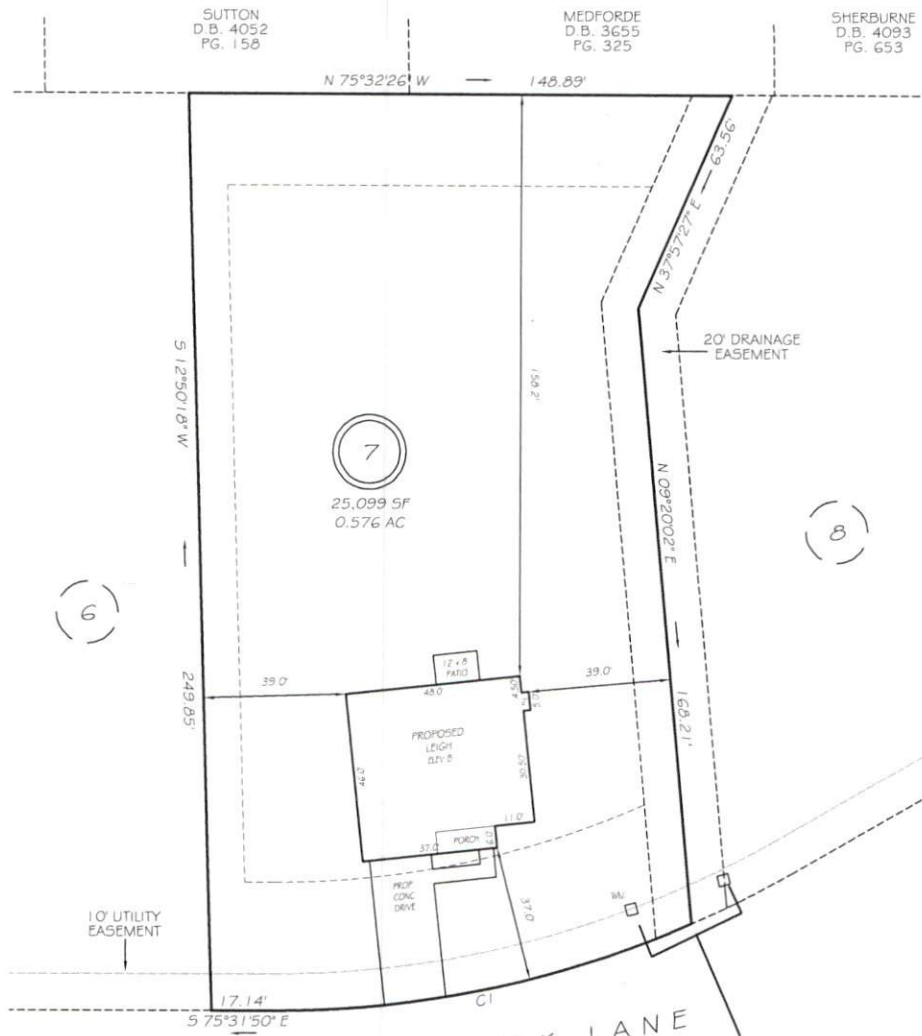


I, MICHAEL P. GRIFFIN, certify that under my direction and supervision this map was drawn from an actual field survey; that the error of closure of the survey as calculated by coordinates is 1:10,000+; that the area shown hereon was calculated by coordinates.
 Witness my hand and seal this day of MONTH 2024.



IMPERVIOUS AREAS

HOUSE	2152 SQ. FT.
DRIVE & WALKS	753 SQ. FT.
PATIO	96 SQ. FT.
TOTAL	3001 SQ. FT.
ALLOWED	9932 SQ. FT.

ZONED RA-30 SETBACKS

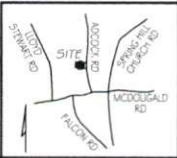
FRONT	35'
REAR	25'
SIDE	10'
CORNER SIDE	20'

C1 R=285.00' L=117.68' N87°21'34"W 116.84'

PRELIMINARY
 NOT FOR RECORDATION,
 SALES OR CONVEYANCE

LEGEND

EIP	EXISTING IRON PIPE	FES	FLARED END SECTION
IPS	IRON PIPE SET	WM	WATER METER
RW	RIGHT OF WAY	CO	CLEAN OUT
N/F	NOW OR FORMERLY	FH	FIRE HYDRANT
EIS	EXISTING IRON STAKE	CB	CATCH BASIN



GRiffin Land Surveying, Inc.
 P.O. BOX 148
 FUQUAY-VARINA, NC 27526
 (919) - 567 - 1963

PLOT PLAN FOR
A & G RESIDENTIAL
 JONES CREEK MEADOWS
 LOT 7
 JONES CREEK LANE
 FOUR OAKS, N.C.
 HARNETT COUNTY UPPER LITTLE RIVER TOWNSHIP

DRAWN BY <u>KDF</u>	DATE <u>3/7/24</u>
CHECKED BY <u>MPG</u>	SCALE <u>1" = 40'</u>