

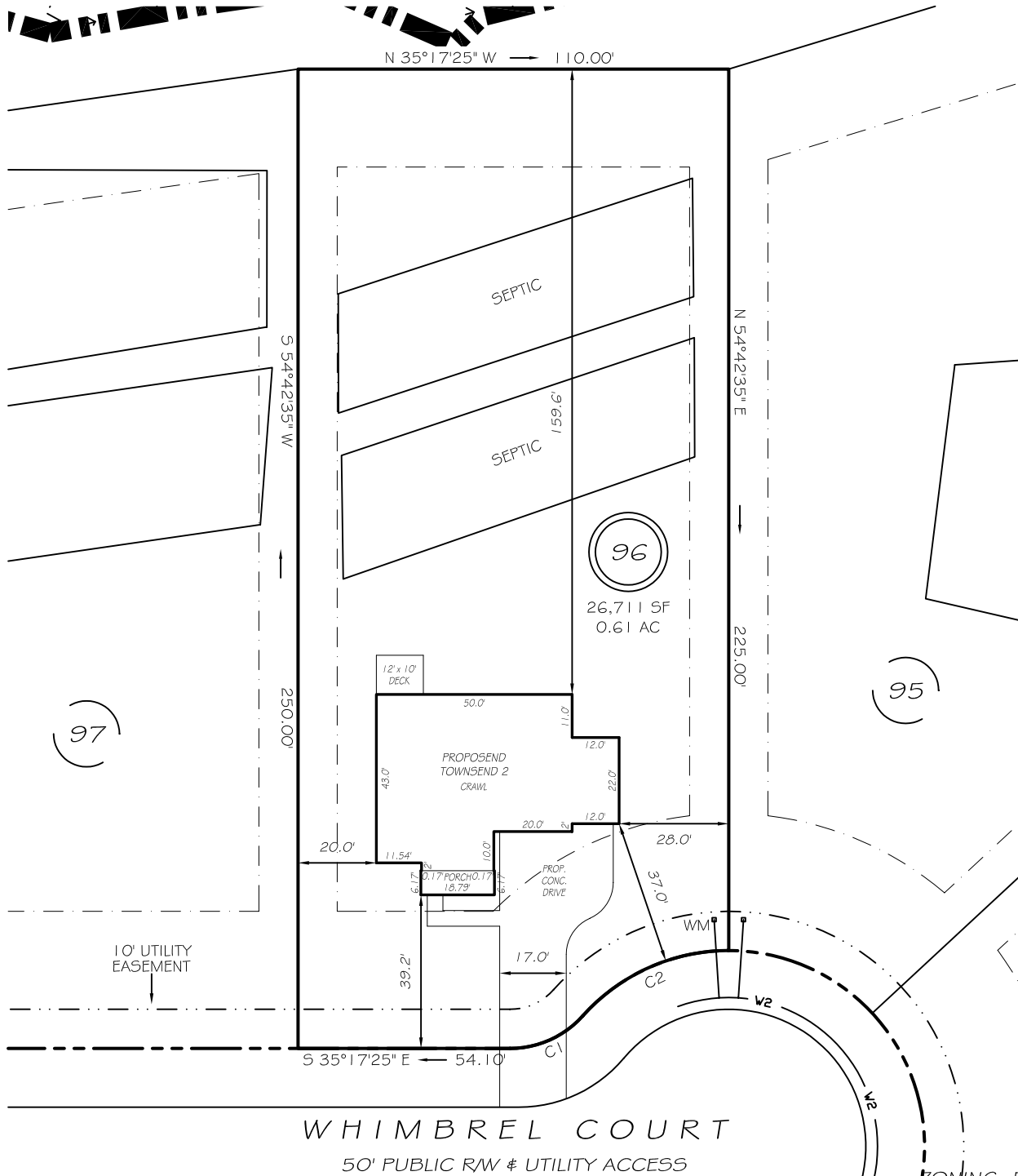
I, MICHAEL P. GRIFFIN, certify that under my direction and supervision this map was drawn from an actual field survey; that the error of closure of the survey as calculated by coordinates is 1: 10,000+; that the area shown hereon was calculated by coordinates.

Witness my hand and seal this day of MONTH 2024.

CA7

N/F  
DRB GROUP NORTH CAROLINA, LLC  
TRACT 1, PARCEL B OF  
DB 4156, PG 2082  
PORTION OF  
DB 4156, PG 2092

BK 2023 PG 381  
HARNETT CO. REGISTRY



WHIMBREL COURT  
50' PUBLIC RW & UTILITY ACCESS

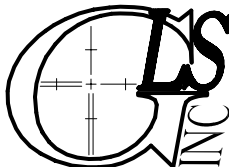
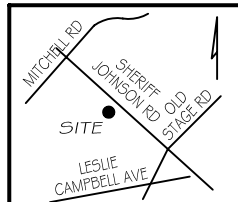
ZONING: RA-30  
SETBACKS  
FRONT 35'  
REAR 25'  
SIDE 10'  
CORNER SIDE 20'

C1 R=25.00' L=21.03' N59°23'06"W 20.41'  
C2 R=50.00' L=42.05' S59°23'06"E 40.82'

LEGEND

**PRELIMINARY**  
NOT FOR RECORDATION,  
SALES OR CONVEYANCE

EIP	EXISTING IRON PIPE	FES	FLARED END SECTION
IPS	IRON PIPE SET	WM	WATER METER
RW	RIGHT OF WAY	CO	CLEAN OUT
N/F	NOW OR FORMERLY	FH	FIRE HYDRANT
EIS	EXISTING IRON STAKE	CB	CATCH BASIN



GRIFFIN LAND SURVEYING, INC.

P.O. BOX 148  
FUQUAY-VARINA, NC 27526  
(919) - 567 - 1963

PLOT PLAN  
FOR

**DRB HOMES**

BLAKE POND SUBDIVISION

LOT 96

127 WHIMBREL COURT

LILLINGTON, N.C.

HARNETT COUNTY NEILL'S CREEK & GROVE TOWNSHIP

DRAWN BY KDF

DATE 2/15/24

CHECKED BY MPG

SCALE 1" = 40'