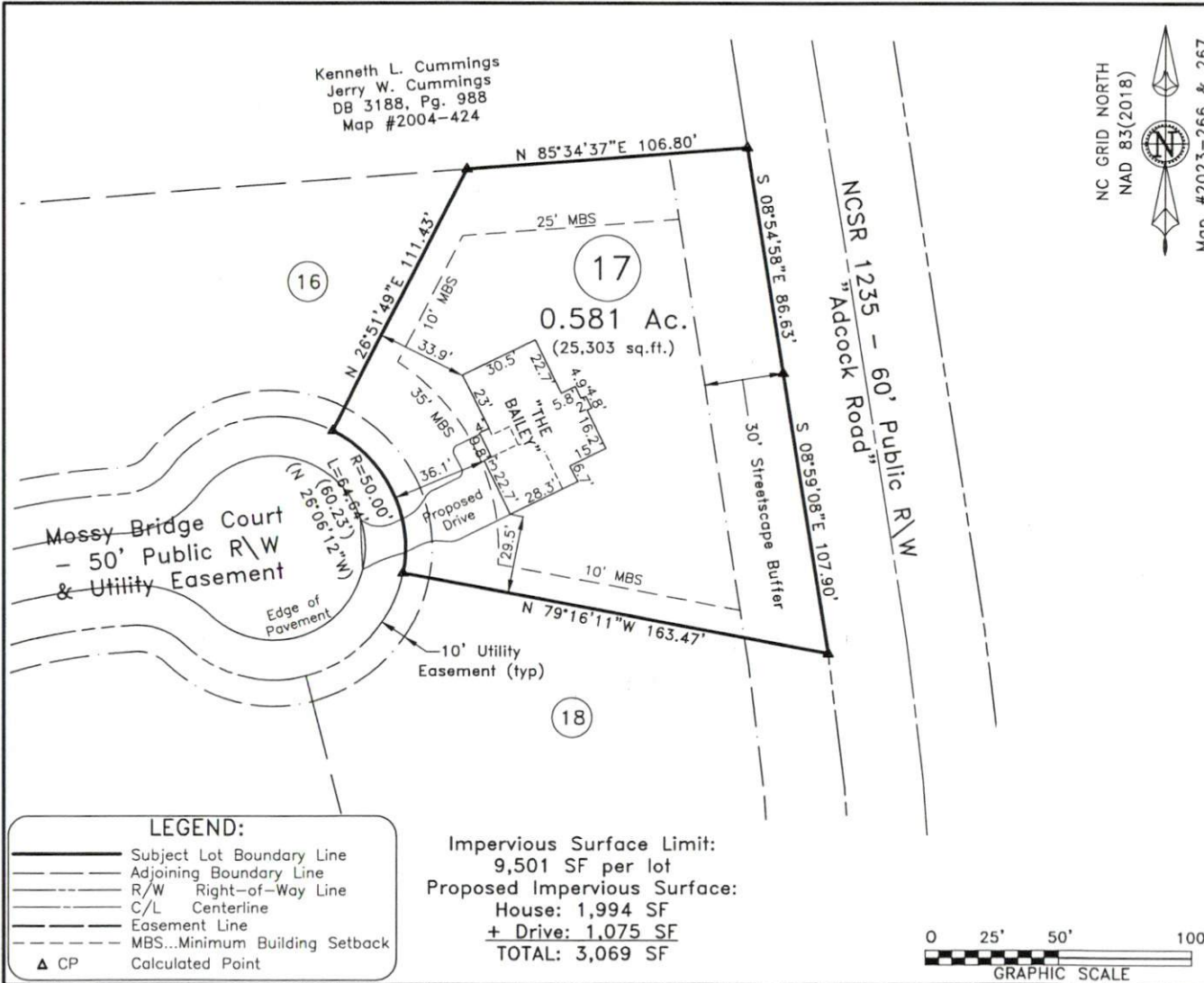


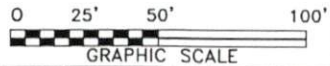
Kenneth L. Cummings
 Jerry W. Cummings
 DB 3188, Pg. 988
 Map #2004-424



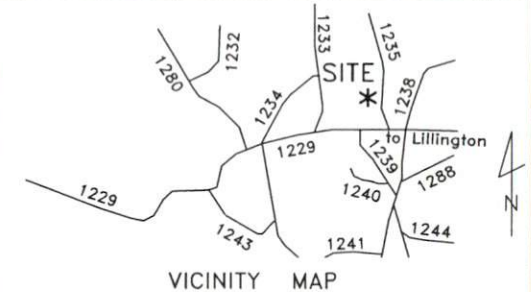
LEGEND:

- Subject Lot Boundary Line
- - - - - Adjoining Boundary Line
- - - - - R/W Right-of-Way Line
- - - - - C/L Centerline
- - - - - Easement Line
- - - - - MBS...Minimum Building Setback
- ▲ CP Calculated Point

Impervious Surface Limit:
 9,501 SF per lot
 Proposed Impervious Surface:
 House: 1,994 SF
 + Drive: 1,075 SF
 TOTAL: 3,069 SF



NC GRID NORTH
 NAD 83(2018)
 Map #2023-266 & 267



~ 109 Mossy Bridge Ct., Lillington ~
 Lot 17, Jones Creek Meadows
 Map #2023-266 & 267

Plot Plan For:
Signature Home Builders Inc.

Upper Little River Twsp. - Harnett County
 Scale: 1" = 50' | Date: Mar. 22, 2024

Surveyed & Mapped By
STREAMLINE LAND SURVEYING, Inc.
 NC FIRM C-1898
 870 NC 55 W, Coats, N.C. 27521
 Phone: 910-897-7715

~PRELIMINARY PLOT PLAN~
 - Not an actual survey -
 This plan represents proposed improvements to a lot of record. This plan is subject to review and approval by County Planning and Inspections Departments.

NOT FOR RECORDATION

DATA\0519\230629SI.dwg (L17-PlotPlan)