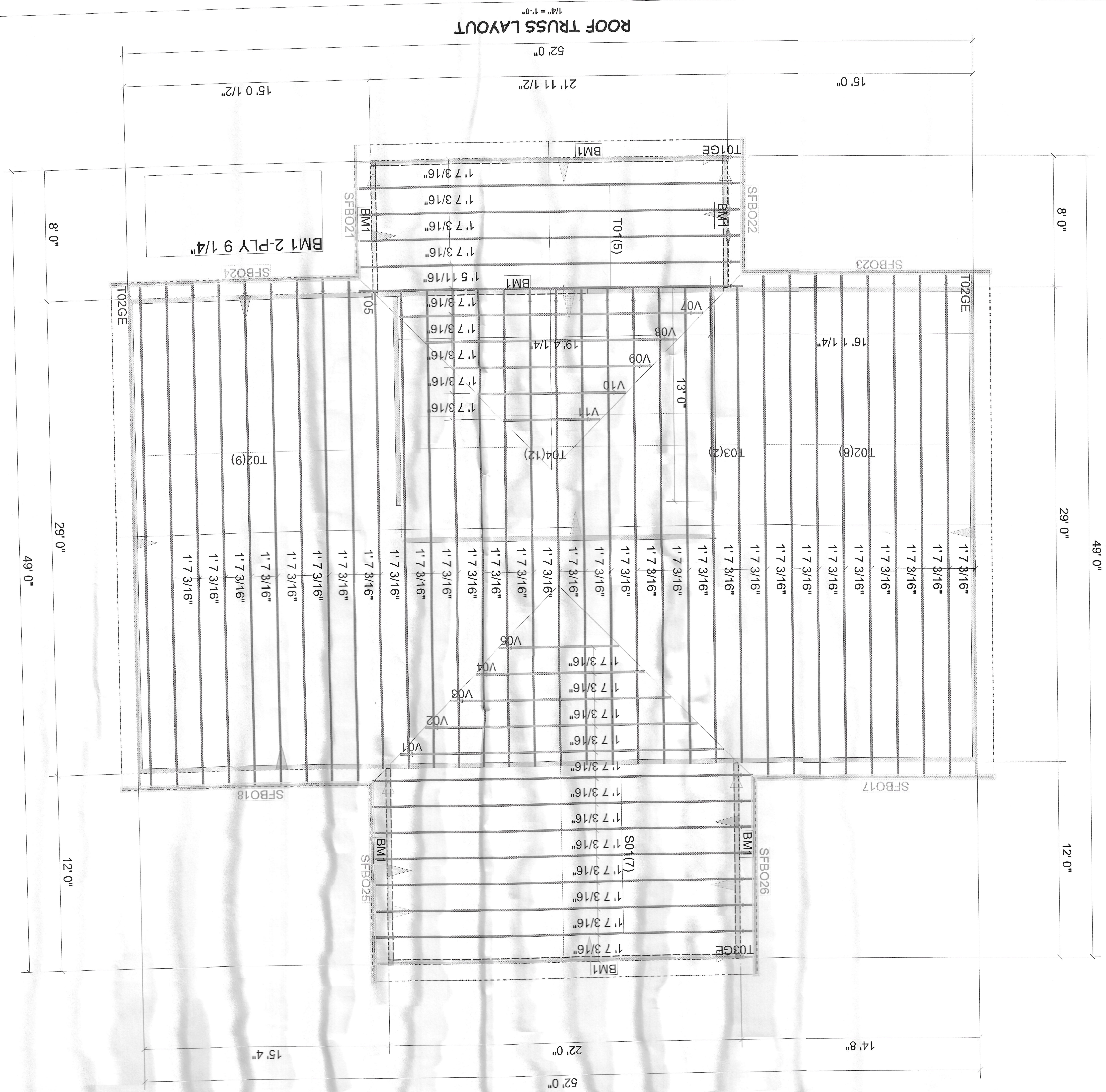


Floor Area: 0 SF
 Floor Plywood: 0
 Roof Area: 2688.39 SF
 Roof Plywood: 90 sheets
 Roof Shingles: 32 Squares



ROOF TRUSS LAYOUT
 1/4" = 1'-0"

Client: **SERVICE BUILDING SUPPLY**
 Project: **JUAN**
 Model: **Model**
 Subdivision:
 Order #: **P24071353**
 Designer: **MTI**
 Date:



NOTE
 IT IS THE RESPONSIBILITY OF THE BUILDING DESIGNER OR ARCHITECT TO PROVIDE AN APPROPRIATE CONNECTION FOR TRUSSES TO SUPPORTING STRUCTURE. THE REPERATIONS SHOWN ON TRUSS ENGINEERING SPECIAL CONSIDERATIONS FOR MECHANICAL, EQUIPMENT AND/OR PLUMBING (AND THEIR CONNECTIONS) IN TRUSS SPACE MUST BE DIAGRAMMED BY BUILDER ON APPROVED TRUSS LAYOUT PRIOR TO FABRICATION. THIS COMPANY IS A TRUSS MANUFACTURER WHOSE RESPONSIBILITIES ARE LIMITED TO THOSE DESCRIBED IN WTCAL-1995 DESIGN RESPONSIBILITIES. ACCORDINGLY, IT DISCLAIMS ANY RESPONSIBILITIES AND/OR LIABILITY FOR THE CONSTRUCTION, DESIGN, DRAWINGS, DOCUMENTS INCLUDING THE INSTALLATION AND BRACING OF TRUSSES MANUFACTURED BY THIS COMPANY. SEE <http://support.stondustry.com/pubs/TTBDResp-D>

4476 Hwy. 21 W
 West End, NC, 27376
 (910) 673-4711