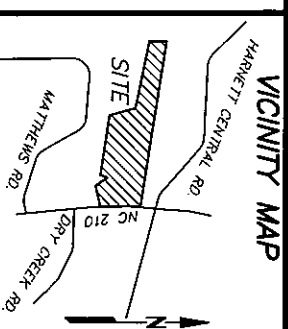


CURVE TABLE

CURVE	DELTA	RADIUS	ARC	CHORD	TANGENT	CHORD BRG
C1	8°27'04"	475.00'	70.06'	70.00'	35.10'	N 74°03'51" E

LINE TABLE

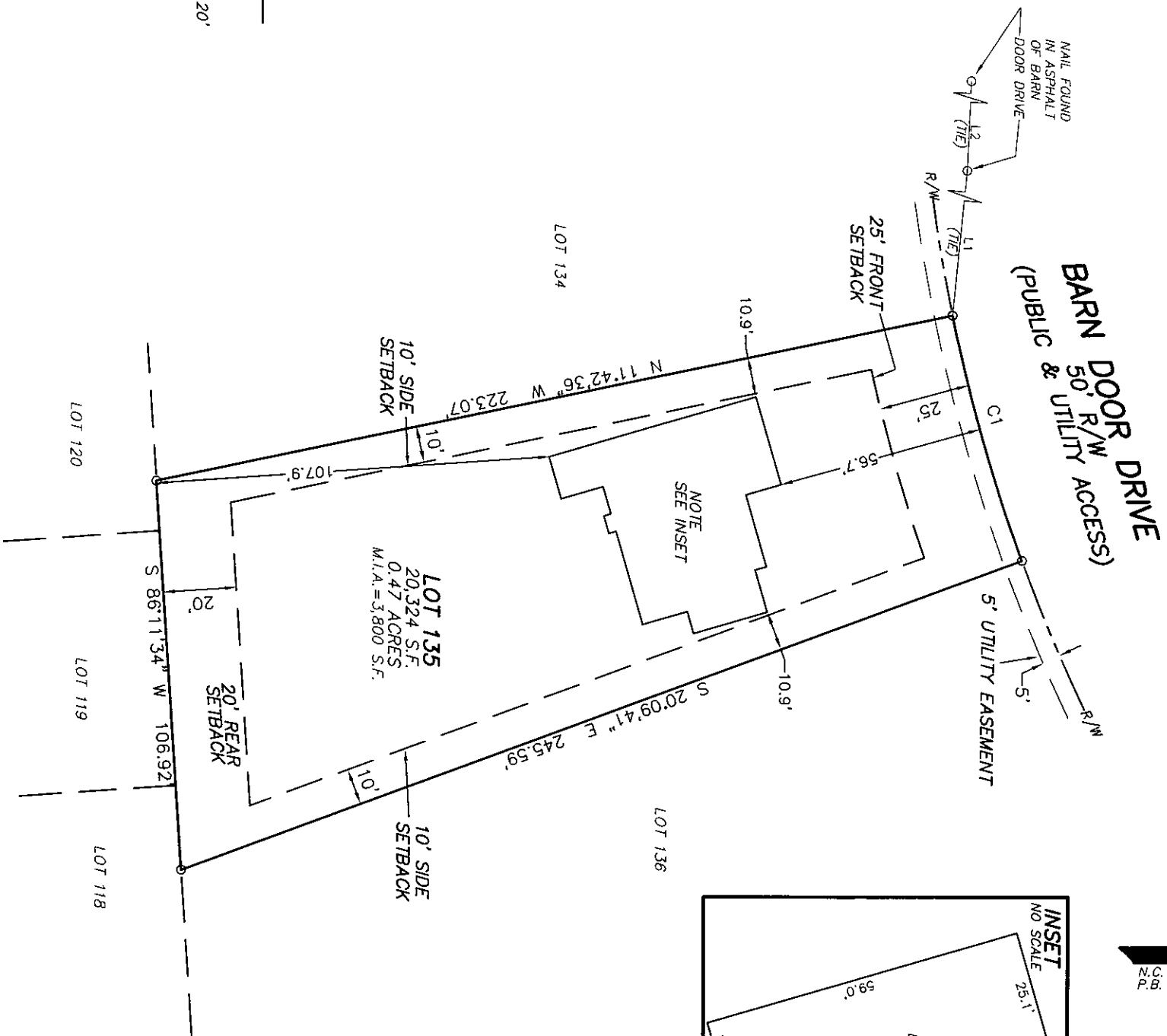
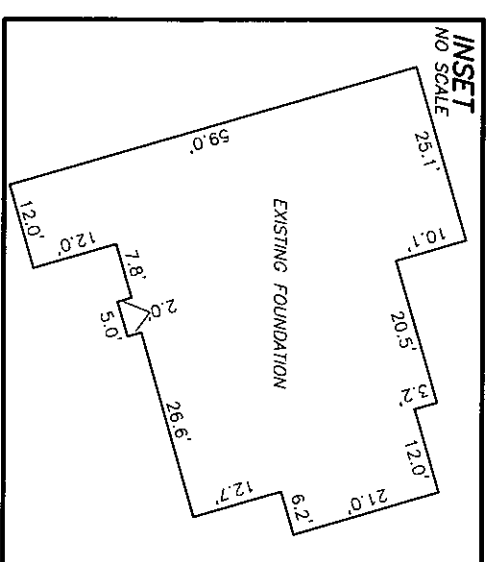
LINE	BEARING	DISTANCE
L1	N 84°24'21" W	261.74'
L2	N 87°33'23" W	239.18'



NOT TO SCALE

- REFERENCES:
- D.B. 4188, PG. 96
PIN 0662-00-4228.000
PID 110662 0027 64
 - D.B. 4072, PG. 220

N.C. GRID NORTH (NAD83) FROM
P.B. 2022, PG. 203-205



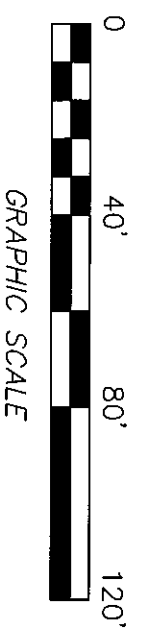
SETBACKS
FRONT-25'
SIDE-10'
REAR-20'
CORNER SIDE-20'

- NOTES:
- ALL EASEMENTS, RIGHTS OF WAY AND BOUNDARY INFORMATION TAKEN FROM P.B. 2022, PG 203-205 UNLESS OTHERWISE NOTED.
 - PROPERTY IS SUBJECT TO ALL EASEMENTS AND RESTRICTIONS OF RECORD. NO TITLE EXAMINATION HAS BEEN DONE BY ROBINSON & PLANTE, P.C.
 - THE PROJECT IS WITHIN THE WS IV WATERSHED. THE MAXIMUM IMPERVIOUS AREA PER LOT IS 3,800 SF.

NOTE:
RATIO OF PRECISION IS 1:10,000+, MISCLOSURE WAS DISTRIBUTED BY THE COMPASS METHOD. THE DISTANCES ON THIS MAP ARE ADJUSTED HORIZONTAL GROUND UNLESS NOTED OTHERWISE. ALL AREAS ARE CALCULATED BY COORDINATE COMPUTATION.

**LOT 135 THE FARM AT NEILLS CREEK
PHASE 1
71 BARN DOOR DR
HARNETT COUNTY
LILLINGTON, N.C. 27546**

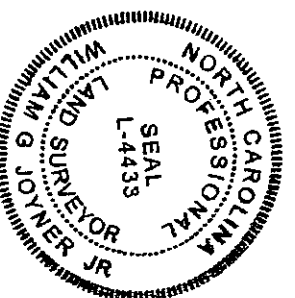
REFERENCE: PLAT BOOK 2022 PAGE 203-205.



FOUNDATION SURVEY FOR
CHESAPEAKE HOMES

FILE: FNCL07135FD

I CERTIFY THAT THIS MAP WAS DRAWN UNDER MY SUPERVISION FROM AN ACTUAL SURVEY MADE UNDER MY SUPERVISION DESCRIPTION RECORDED IN REFERENCES AS SHOWN; THAT THE BOUNDARIES NOT SURVEYED ARE INDICATED AS DRAWN FROM INFORMATION IN THIS MAP MEET THE REQUIREMENTS OF THE STANDARDS OF PRACTICE FOR LAND SURVEYING IN NORTH CAROLINA (21 NCAC 56 16000). THIS 9th DAY OF JULY 2024.
William G Joyner
PROFESSIONAL LAND SURVEYOR L-4433



ROBINSON & PLANTE PC
LAND SURVEYING
C-2687
970 TRINITY ROAD
RALEIGH NC, 27607
PHONE (919) 859-6030
FAX (919) 859-6032

DATE: 7-8-24

SCALE: 1"=40'