

**General Notes:**

- Per ANSI/TPI 1-2002 all " Truss to Wall" connections are the responsibility of the Building Designer, not the Truss Manufacturer.
- Dimensions are Feet-Inches- Sixteenths.
- Trusses are to be 24" o.c. unless noted otherwise (U.N.O.)
- Trusses are not designed to support brick U.N.O.
- Do not cut or modify trusses without first contacting Builders FirstSource.
- Immediately contact Builders FirstSource if trusses are damaged.

**Connection Notes:**

- All hangers are to be Simpson or equivalent U.N.O.
- Use Manufacturer's specifications for all hanger connections U.N.O.
- Use 10d x 1 1/2" Nails in hanger connections to single ply roof girder trusses.

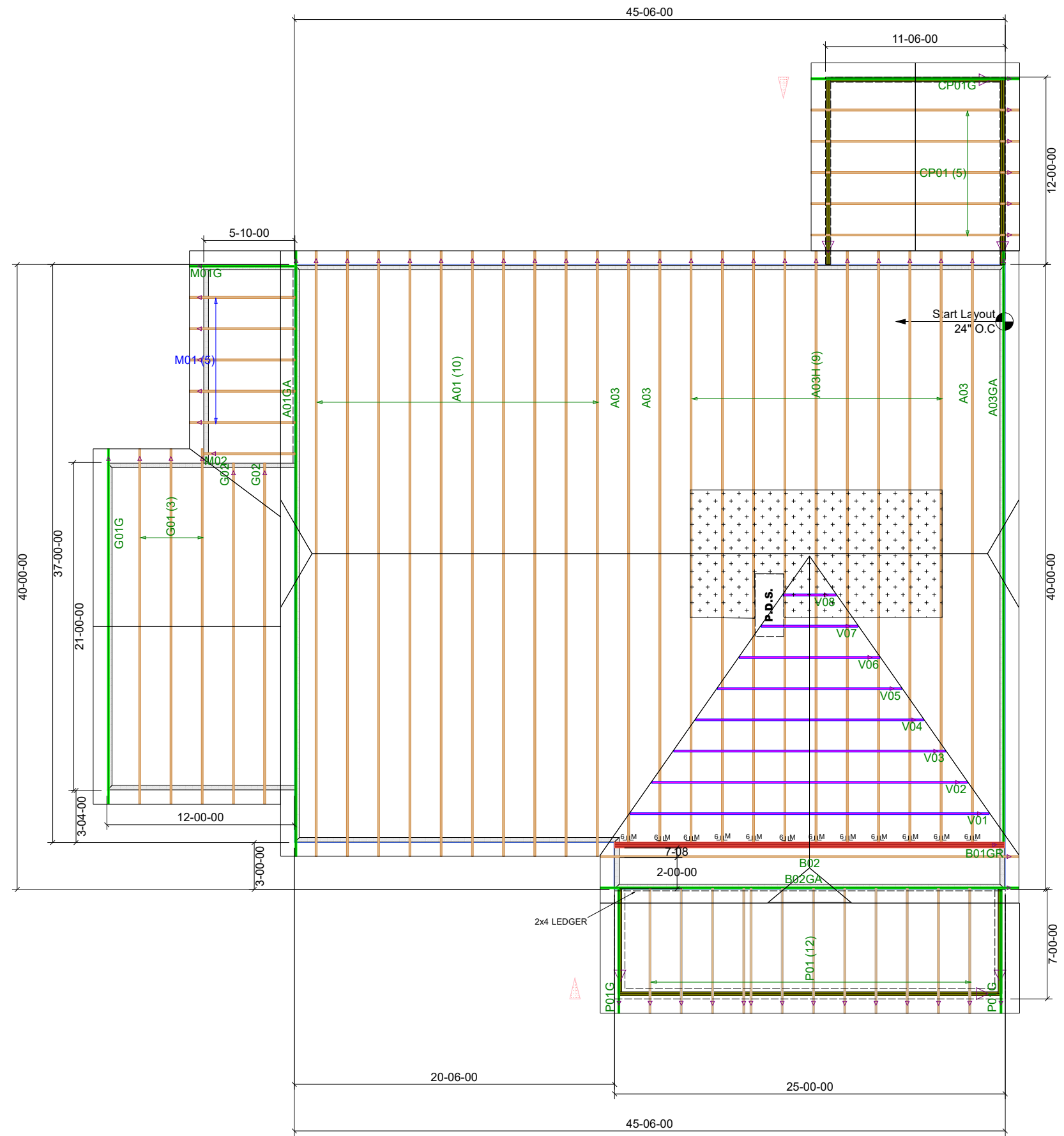
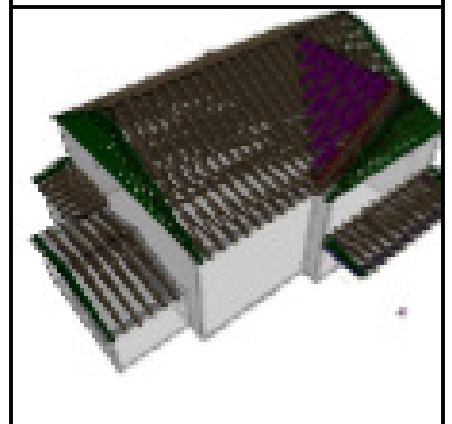
**Floor notes:**

- Shift truss as required to avoid plumbing traps.
- Installation Contractor and/or Field Supervisor are to verify all dimensions, trap locations, and options prior to installation

**Dimension Notes:**

- Drawing not to scale. Do not scale dimensions

△◁▷ LEFT END OF TRUSS AS SHOWN ON TRUSS DETAIL DRAWINGS ARE INDICATED BY TRIANGLE ICONS.



<b>HANGER LIST</b>	ALL TIE DOWNS H2.5A UNLESS NOTED
	<b>SPECIAL ITEMS LIST</b>
	<b>MISC MATERIAL</b>

CHESAPEAKE	
628	ELEV: A
FARM AT NEILL CREEK	
---	NC LOT: 135
<b>APPWRIGHT #</b>	
---	
• [OPTION 1]	<b>CODE:</b> IRC 2015
• [OPTION 2]	<b>LOADING:</b>
• [OPTION 3]	T.C.L.L. 40 PSF
<b>DESIGNED BY:</b> HYS	T.C.D.L. 10 PSF
<b>LAYOUT:</b> ---	B.C.L.L. 0 PSF
<b>L/O DATE:</b> 3/11/2024	B.C.D.L. 5 PSF

<b>REVISION HISTORY</b>		<b>WIND:</b>	
REV1:	XX/XX/XX	M.P.H.	115 MPH
REV2:	XX/XX/XX	EXPOSURE CATEGORY	
REV3:	XX/XX/XX	B (WOODED AREAS/OTHERS)	
<b>PICK TICKET:</b> ---	<b>JOB NO.:</b> ---		
<b>SALES NO.:</b> ---	<b>ACCT NO.:</b> ---		

<b>HATCH LEGEND</b>	
	ATTIC ROOM
	VOLUME CEILING
	STICK FRAMING