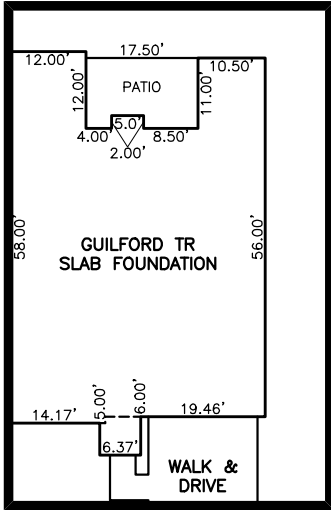


PLOT PLAN FOR
NEW HOME, INC. LLC
 327 BEACON HILL ROAD
 LOT 22, DUNCAN'S CREEK, PHASE I
 UPPER LITTLE CREEK TOWNSHIP, HARNETT COUNTY, NORTH CAROLINA

N\F
 STEPHANIE & JASEN CARRICO
 D.B. 4187, PG. 2991
 P.B. 2013, PG. 392

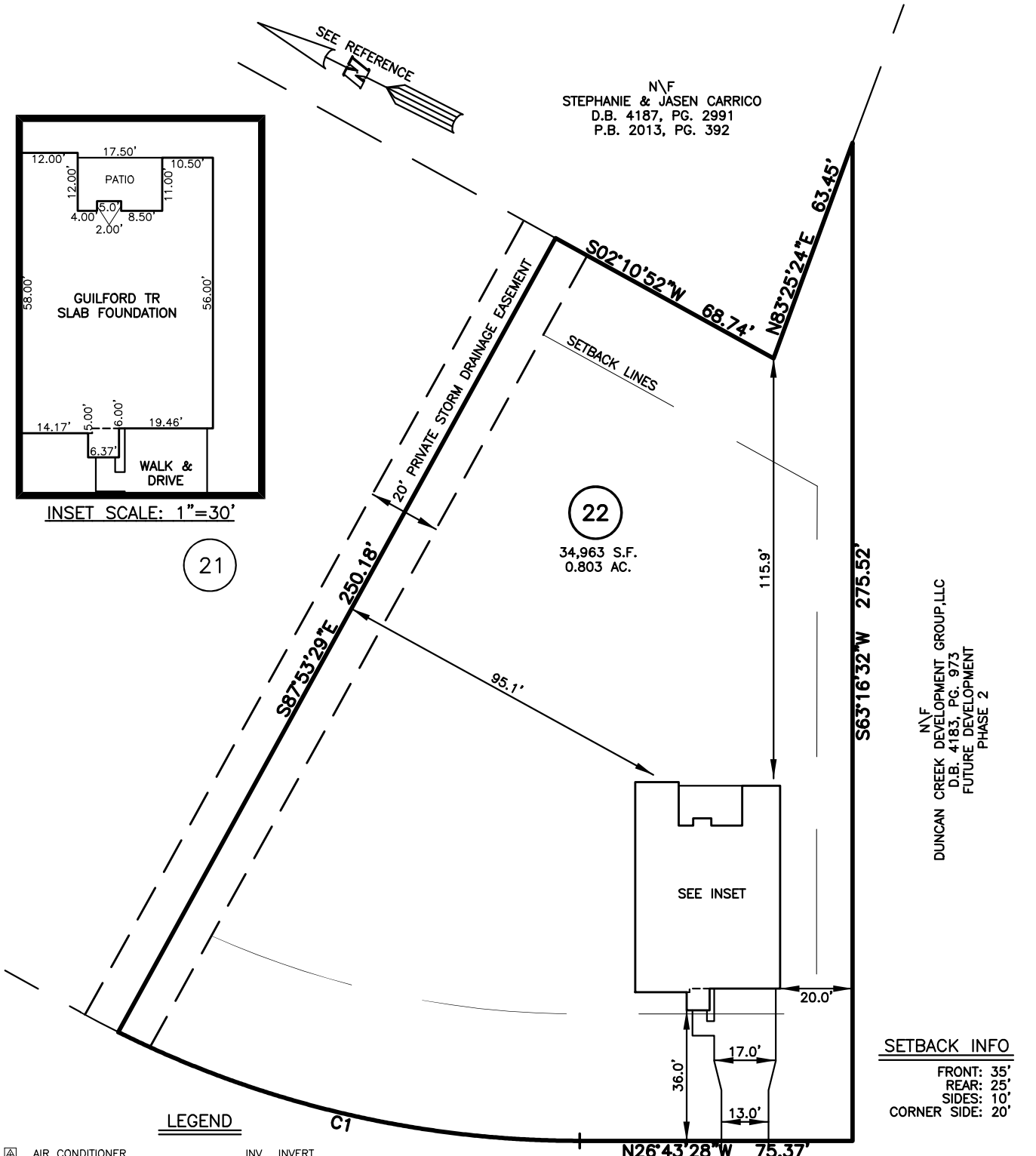


INSET SCALE: 1"=30'

21

22

34,963 S.F.
0.803 AC.



N\F
 DUNCAN CREEK DEVELOPMENT GROUP, LLC
 D.B. 4183, PG. 973
 FUTURE DEVELOPMENT
 PHASE 2

SETBACK INFO

FRONT:	35'
REAR:	25'
SIDES:	10'
CORNER SIDE:	20'

- LEGEND**
- AIR CONDITIONER
 - BC BACK OF CURB
 - BFP BACK FLOW PREVENTER
 - CLEANOUT
 - CURB INLET
 - DHS DRILL HOLE SET
 - ECM EXISTING CONCRETE MONUMENT
 - EDH EXISTING DRILL HOLE
 - EIS EXISTING IRON STAKE
 - EIP EXISTING IRON PIPE
 - EM ELECTRIC METER
 - EPK EXISTING PK NAIL
 - ES ELECTRIC STUB
 - FLARED END SECTION
 - FIRE HYDRANT
 - FIBER OPTIC PEDESTAL
 - GM GAS METER
 - GUY

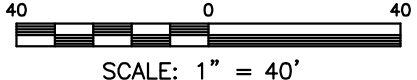
- INV. INVERT
- IPS IRON PIPE SET
- IRS IRON ROD SET
- LIGHT POLE
- MNS MAGNETIC NAIL SET
- MANHOLE SANITARY SEWER
- MANHOLE STORM SEWER
- OHV OVERHEAD WIRES
- PKS PK NAIL SET
- PNS POINT NOT SET
- RRS RAIL ROAD SPIKE
- TELEPHONE PEDESTAL
- TRANSFORMER
- CABLE TV PEDESTAL
- UTILITY POLE
- WATER METER
- WATER VALVE
- YARD INLET
- () FIELD MEASUREMENT

BEACON HILL ROAD
 50' PUBLIC R/W

IMPERVIOUS SURFACES	S.F.
HOUSE	2,130
WALK & DRIVE	680
PATIO	180
TOTAL	2,990
PERCENT IMPERVIOUS	8.5%

NUM	RADIUS	ARC	DELTA	CHORD BRG	CHORD
C1	285.00'	131.98'	26°32'00"	N13°27'28"W	130.81'

REFERENCES:
 B.M. 2022, PGS. 594-596



- NOTES**
- THIS SURVEY SUBJECT TO ANY FACTS THAT MAY BE DISCLOSED BY A FULL AND ACCURATE TITLE SEARCH.
 - THIS MAP MAY NOT BE A CERTIFIED SURVEY AND HAS NOT BEEN REVIEWED BY A LOCAL GOVERNMENT AGENCY FOR COMPLIANCE WITH ANY APPLICABLE LAND DEVELOPMENT REGULATIONS AND HAS NOT BEEN REVIEWED FOR COMPLIANCE WITH RECORDING REQUIREMENTS FOR PLATS.

PLOT PLAN
 PRELIMINARY PLAT- NOT FOR RECORDATION,
 CONVEYANCE OR SALES

DATE: MAR. 01, 2024

REV CODE: 1.FLIP, 2.PLAN, 3.ROTATE, 4.MOVE, 5.SS
 6.SEVERAL OF ABOVE, 7.LAND FEATURE, 8. OTHER

F.B. _____

RWK, PA
ENGINEERING ~ SURVEYING
 CORPORATE LICENSE: C-1771
 101 W. MAIN ST., SUITE 202
 GARNER, NC 27529
 PHONE (919) 779-4854
 FAX (919) 779-4056