

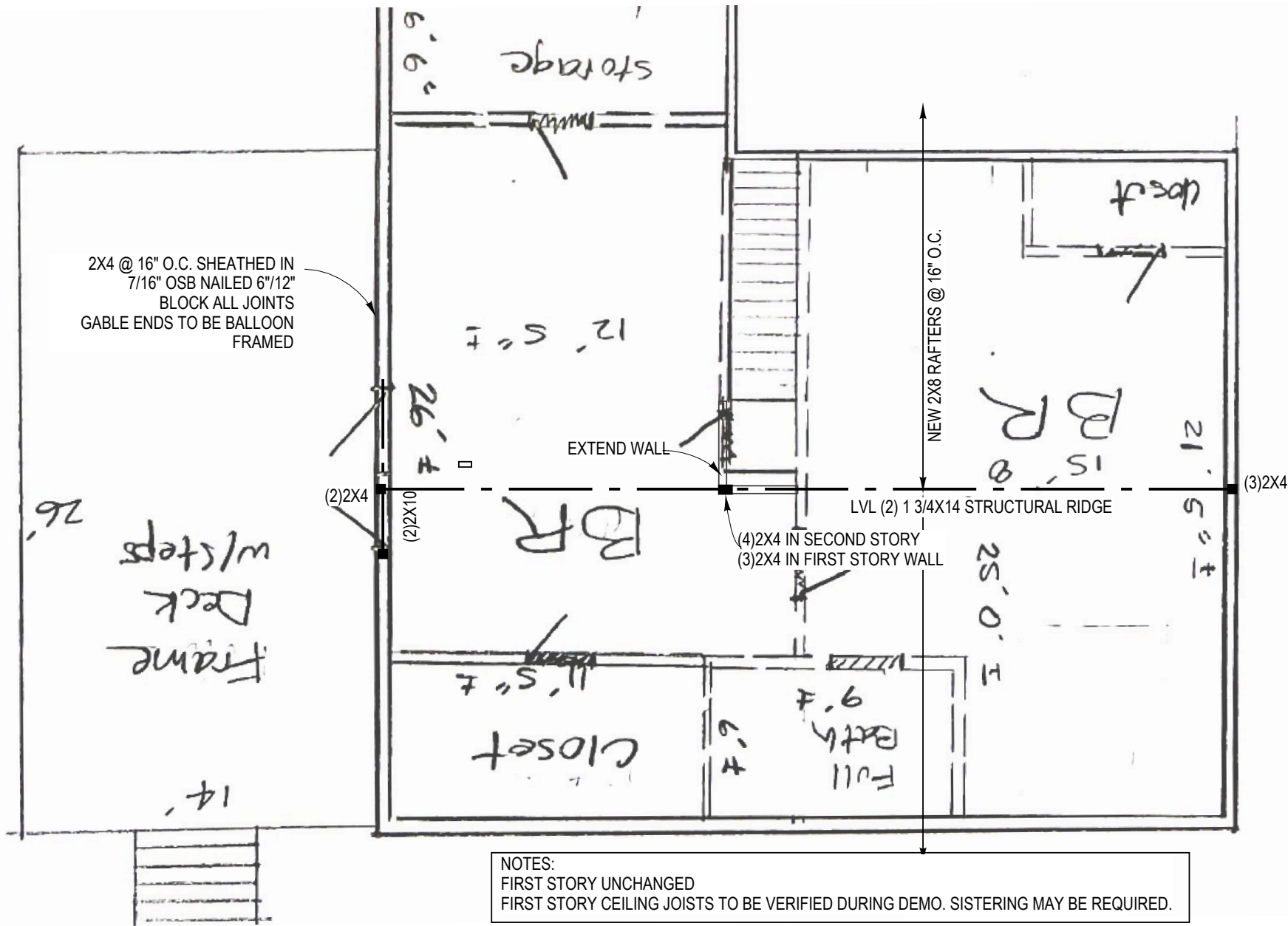
**2 DETACHED SUNROOM FOUNDATION PLAN**  
 S1 SCALE: 3/16" = 1'-0" APPROX

= PIER DROPPED ONE COURSE  
 = FLUSH PIER

PIER FOOTINGS TO BE 10" THICK WITH 8" PROJECTION  
 LOCATE PIERS APPROXIMATELY AT THE CURRENT LOCATIONS

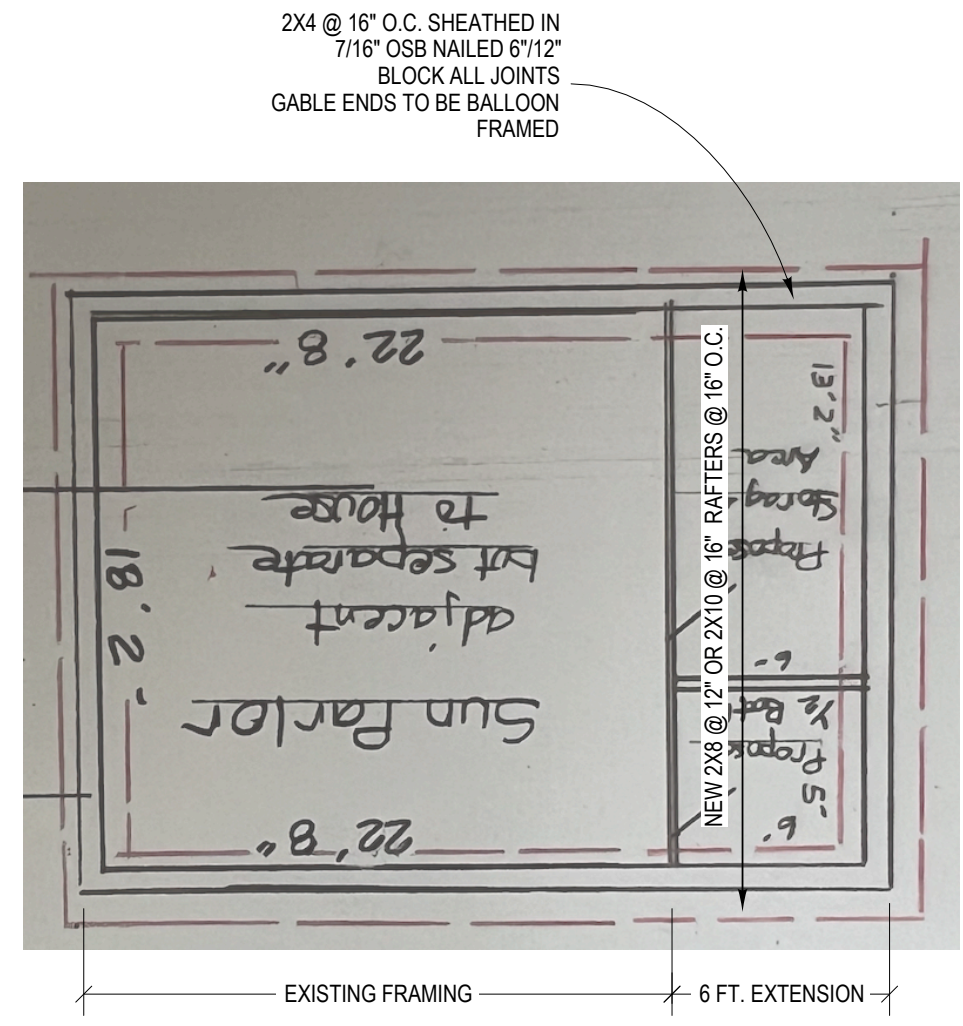
**1 HOUSE FOUNDATION PLAN**  
 S1 SCALE: 3/16" = 1'-0" APPROX

NOTES:  
 FOOTINGS ASSUMED TO BE LOCATED BY A SURVEYOR  
 REFER TO THE NCSBC FOR DETAILS AND CONSTRUCTION NOT SPECIFICALLY SHOWN  
 CONTRACTOR RESPONSIBLE FOR MEANS & METHODS OF CONSTRUCTION AND JOBSITE SAFETY  
 ACCURATELY VERIFY ALL DIMENSIONS AND PIER LOCATIONS. DO NOT SCALE DRAWING  
 CONSTRUCTING FOOTINGS AND FOUNDATION WHILE HOUSE IS SUSPENDED IS RECOMMENDED TO AVOID PLACEMENT ERRORS  
 UNLESS PREVIOUSLY NEGOTIATED IN WRITING, THIS PROJECT DOES NOT INCLUDE JOBSITE OBSERVATION SERVICES  
 THE SCOPE OF THIS PROJECT IS THIS FRAMING PLAN.  
 THIS PROJECT WAS BILLED HOURLY AND HAS A LIABILITY LIMITATION OF 10 TIMES FEES COLLECTED  
 HOUSE MOVED FROM 520 SEAWELL ROSSER ROAD



NOTES:  
 FIRST STORY UNCHANGED  
 FIRST STORY CEILING JOISTS TO BE VERIFIED DURING DEMO. SISTERING MAY BE REQUIRED.

1 SECOND STORY PLAN  
 S2 SCALE: 3/16" = 1'-0"



2 SUNROOM EXTENSION  
 S2 SCALE: 3/16" = 1'-0"

