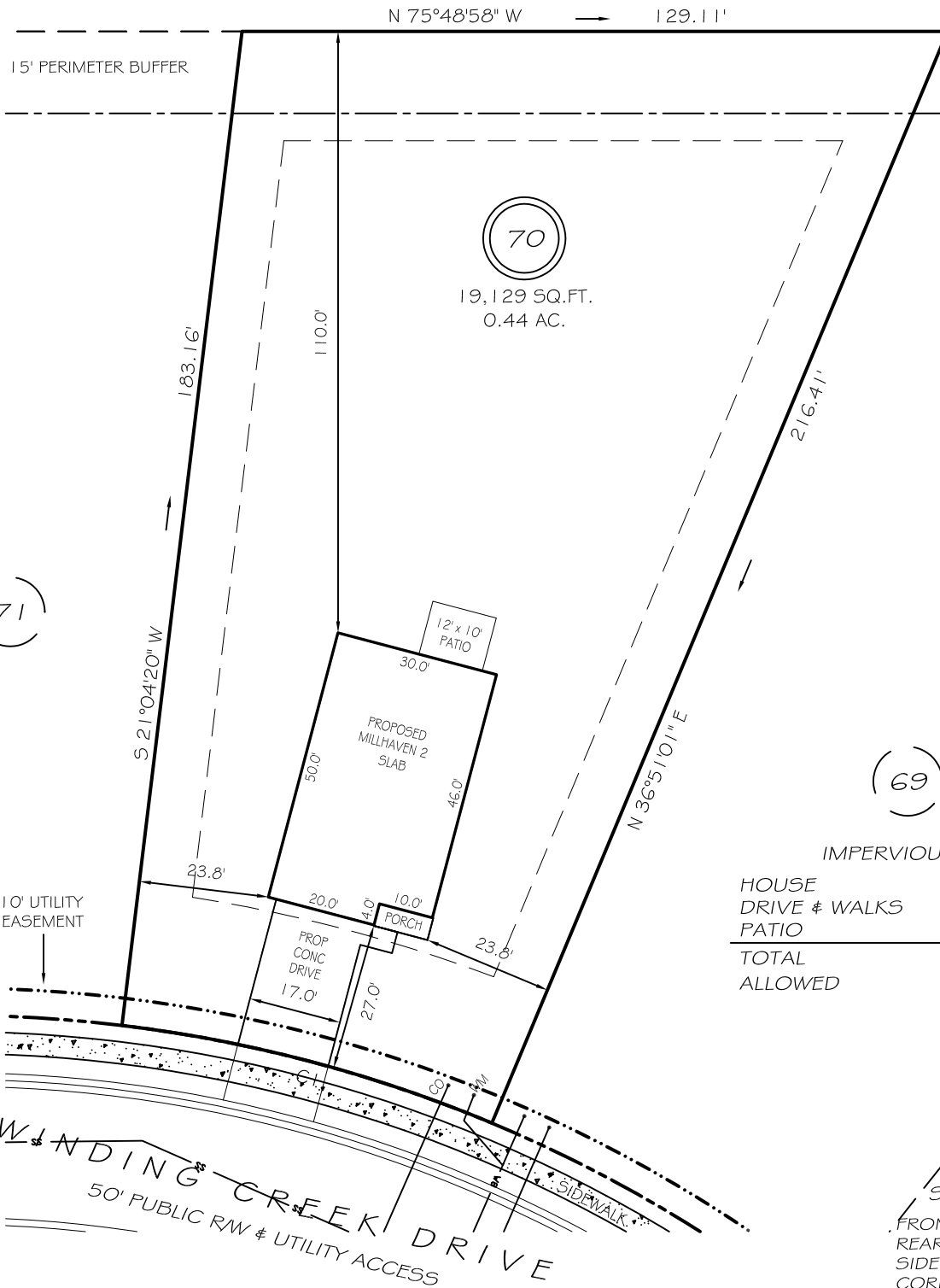


I, MICHAEL P. GRIFFIN, certify that under my direction and supervision this map was drawn from an actual field survey; that the error of closure of the survey as calculated by coordinates is 1: 10,000+; that the area shown hereon was calculated by coordinates.

Witness my hand and seal this day of MONTH 2024.

N / F  
 TRAVIS WESTER  
 ESTATE 92E, PG 105  
 DB 304, PG 30  
 PB 2021, PG 41

BK 2023 PGS 658-660  
 HARNETT CO. REGISTRY



IMPERVIOUS AREAS

HOUSE	1502 SQ. FT.
DRIVE & WALKS	487 SQ. FT.
PATIO	120 SQ. FT.
<b>TOTAL</b>	<b>2109 SQ. FT.</b>
<b>ALLOWED</b>	<b>3800 SQ. FT.</b>

SETBACKS

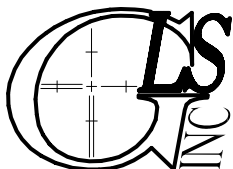
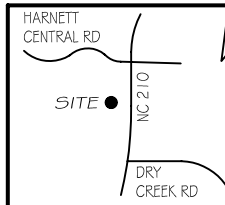
FRONT	25'
REAR	20'
SIDE	10'
CORNER SIDE	20'

CI R=255.00' L=70.22' S61°02'20"E 70.0'

**PRELIMINARY**  
 NOT FOR RECORDATION,  
 SALES OR CONVEYANCE

LEGEND

EIP	EXISTING IRON PIPE	FES	FLARED END SECTION
IPS	IRON PIPE SET	WM	WATER METER
RAW	RIGHT OF WAY	CO	CLEAN OUT
N/F	NOW OR FORMERLY	FH	FIRE HYDRANT
EIS	EXISTING IRON STAKE	CB	CATCH BASIN



GRIFFIN LAND SURVEYING, INC.

P.O. BOX 148  
 FUQUAY-VARINA, NC 27526  
 (919) - 567-1963

**PLOT PLAN**  
 FOR  
**DRB HOMES**  
 THE FARM AT  
 NEILLS CREEK  
 LOT 70

325 WINDING CREEK DRIVE  
 NORTH CAROLINA

HARNETT COUNTY NEILL'S CREEK TWSHP

DRAWN BY **KDF**

DATE **2/8/24**

CHECKED BY **MPG**

SCALE **1" = 30'**