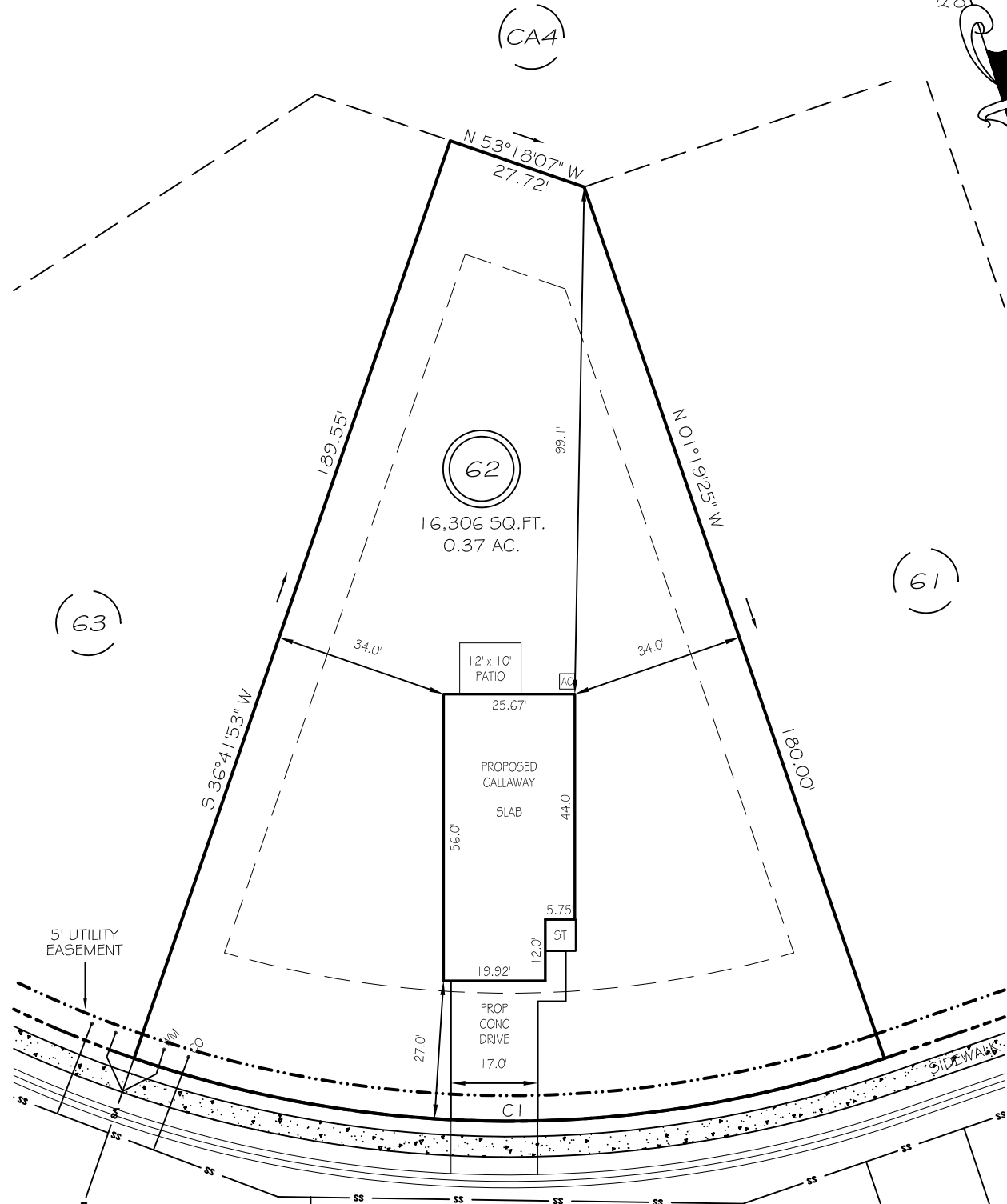


I, MICHAEL P. GRIFFIN, certify that under my direction and supervision this map was drawn from an actual field survey; that the error of closure of the survey as calculated by coordinates is 1: 10,000+; that the area shown hereon was calculated by coordinates.

Witness my hand and seal this day of MONTH 2024.

BK 2023 PGS 65-89-96 CO  
HARNETT CO. REGISTRAR



IMPERVIOUS AREAS      WINDING CREEK DRIVE      SETBACKS

HOUSE	1405 SQ. FT.
DRIVE & WALKS	510 SQ. FT.
PATIO	120 SQ. FT.
AC PAD	9 SQ. FT.
<b>TOTAL</b>	<b>2044 SQ. FT.</b>
ALLOWED	3800 SQ. FT.

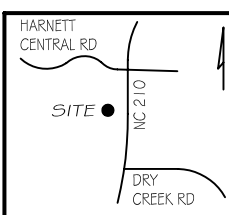
FRONT	25'
REAR	20'
SIDE	10'
CORNER SIDE	20'

CI R=225.00' L=149.31' S72°18'46"E 146.59'

**PRELIMINARY**  
NOT FOR RECORDATION,  
SALES OR CONVEYANCE

**LEGEND**

EIP	EXISTING IRON PIPE	FES	FLARED END SECTION
IPS	IRON PIPE SET	WM	WATER METER
R/W	RIGHT OF WAY	CO	CLEAN OUT
N/F	NOW OR FORMERLY	FH	FIRE HYDRANT
EIS	EXISTING IRON STAKE	CB	CATCH BASIN



**GLS** GRIFFIN LAND SURVEYING, INC.  
P.O. BOX 148  
FUQUAY-VARINA, NC 27526  
(919) - 567-1963

**PLOT PLAN**  
FOR  
**DRB HOMES**  
THE FARM AT  
NEILLS CREEK  
**LOT 62**  
481 WINDING CREEK DRIVE  
NORTH CAROLINA  
HARNETT COUNTY NEILL'S CREEK TWSHP

DRAWN BY <b>KDF</b>	DATE <b>3/13/24</b>
CHECKED BY <b>MPG</b>	SCALE <b>1" = 30'</b>