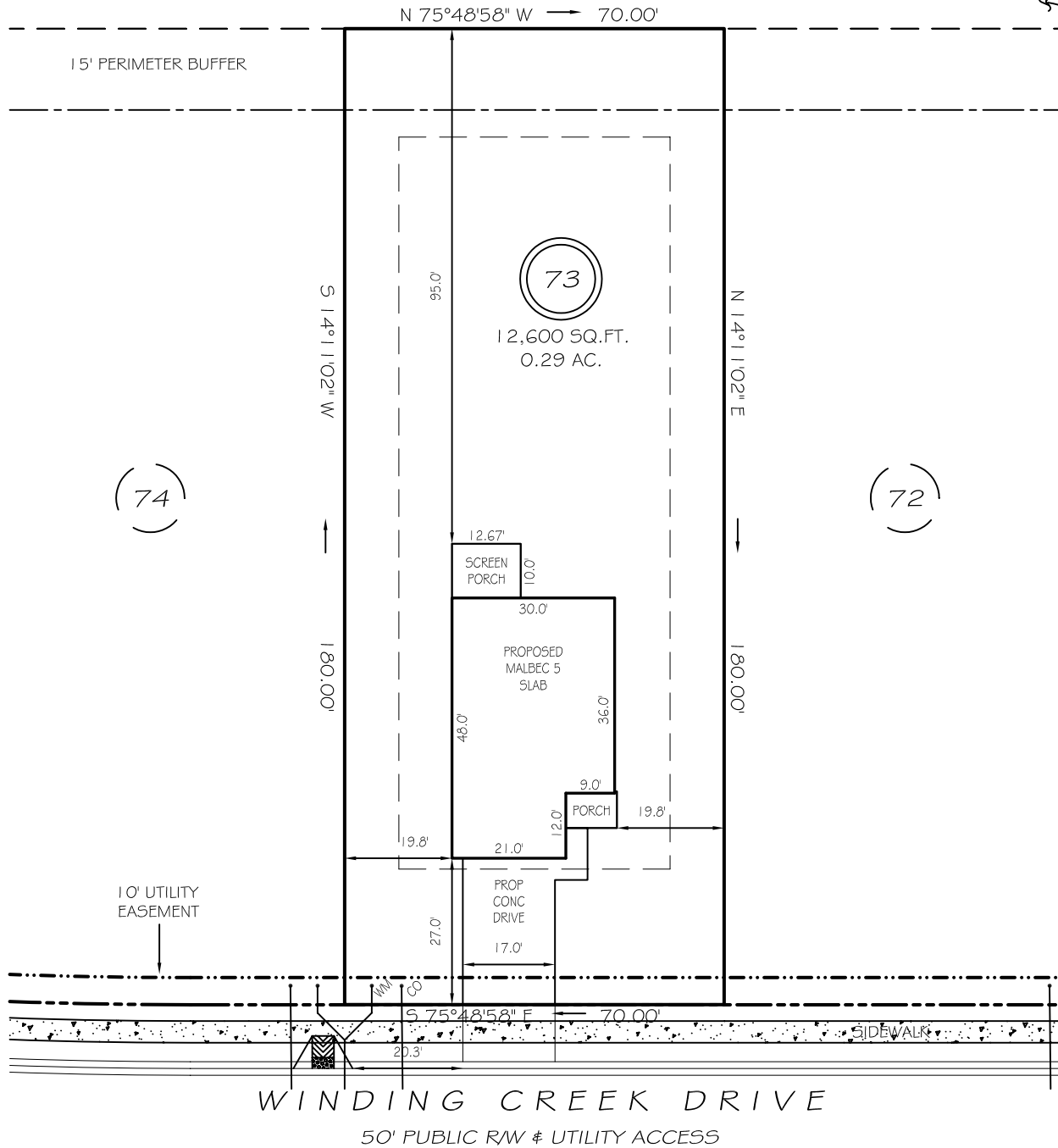


I, MICHAEL P. GRIFFIN, certify that under my direction and supervision this map was drawn from an actual field survey; that the error of closure of the survey as calculated by coordinates is 1: 10,000+; that the area shown hereon was calculated by coordinates.

Witness my hand and seal this day of MONTH 2024.

BK 2023 PGS 658-660  
HARNETT CO. REGISTRY

N / F  
TRAVIS WESTER  
ESTATE 92E, PG 105  
DB 304, PG 30  
PB 2021, PG 41



IMPERVIOUS AREAS

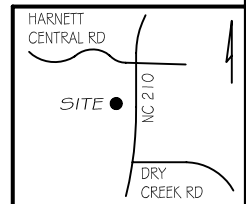
HOUSE	1519 SQ. FT.
DRIVE & WALKS	505 SQ. FT.
PATIO	0 SQ. FT.
<b>TOTAL</b>	<b>2024 SQ. FT.</b>
<b>ALLOWED</b>	<b>3800 SQ. FT.</b>

SETBACKS

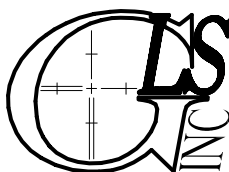
FRONT	25'
REAR	20'
SIDE	10'
CORNER SIDE	20'

LEGEND

EIP	EXISTING IRON PIPE	FES	FLARED END SECTION
IPS	IRON PIPE SET	WM	WATER METER
RW	RIGHT OF WAY	CO	CLEAN OUT
N/F	NOW OR FORMERLY	FH	FIRE HYDRANT
EIS	EXISTING IRON STAKE	CB	CATCH BASIN



**PRELIMINARY**  
NOT FOR RECORDATION,  
SALES OR CONVEYANCE



**GRIFFIN LAND SURVEYING, INC.**  
P.O. BOX 148  
FUQUAY-VARINA, NC 27526  
(919) - 567-1963

**PLOT PLAN**  
FOR  
**DRB HOMES**  
THE FARM AT  
NEILLS CREEK  
**LOT 73**

287 WINDING CREEK DRIVE  
NORTH CAROLINA

HARNETT COUNTY NEILL'S CREEK TWSHP

DRAWN BY **KDF**

DATE **2/19/24**

CHECKED BY **MPG**

SCALE **1" = 30'**