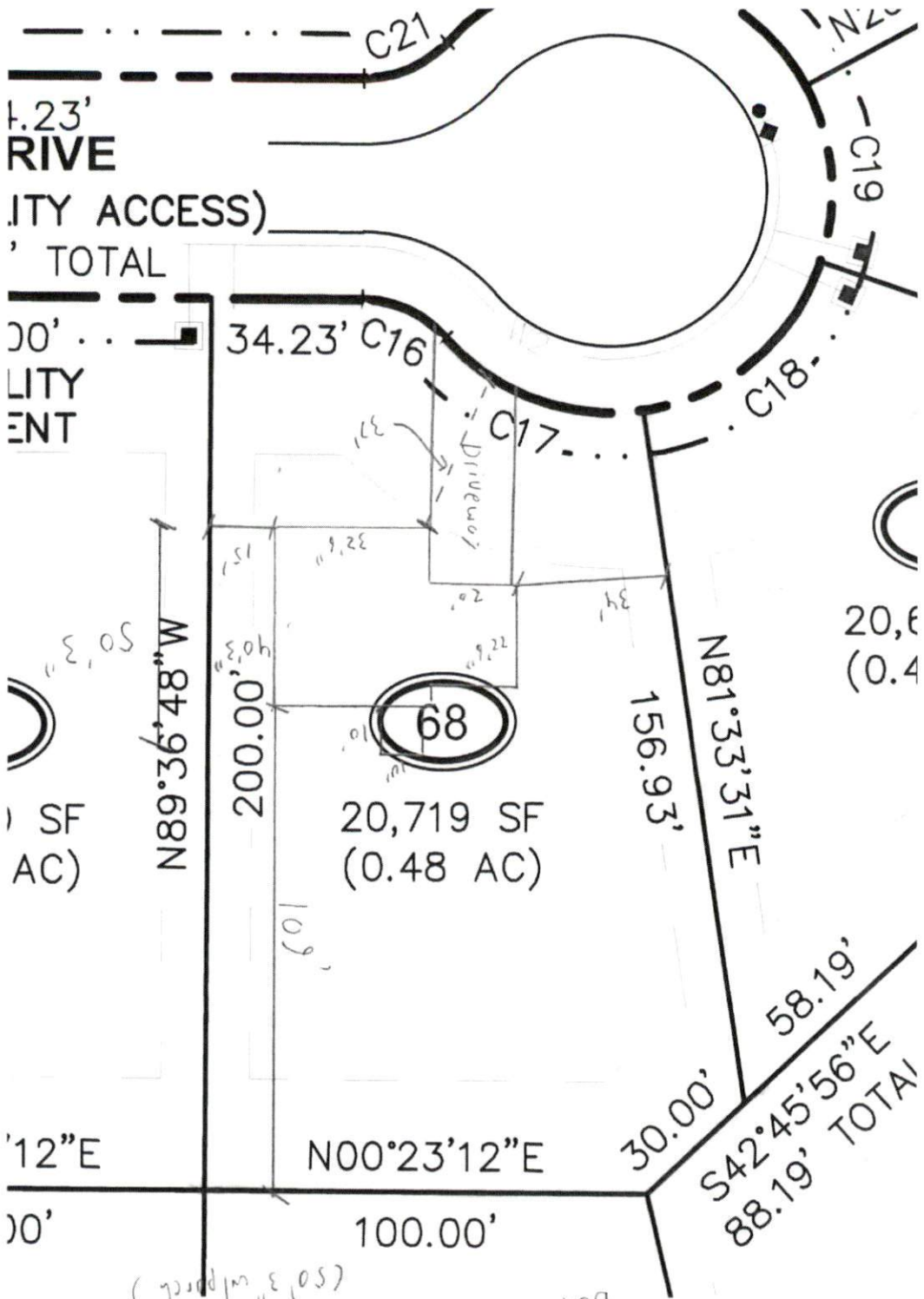


Sam Adams Dr.



RIVER

(UTILITY ACCESS)

TOTAL

100' ...
UTILITY
ENT

34.23' C16

C17

C18

20,600
(0.47)

50' 3"
SF
AC)

N89°36'48"W
200.00'

20,719 SF
(0.48 AC)

156.93'
N81°33'31"E

12"E

N00°23'12"E

30.00'
58.19'
S42°45'56"E
88.19' TOTAL

100'

100.00'

56 Sam Adams Dr., Cameron, NC
 Liberty Meadows Lot 68
 PIN: 9566-78-8634
 Box = 52'6" wide x 40'3" deep + 10' x 10' porch
 (50'3" width)