

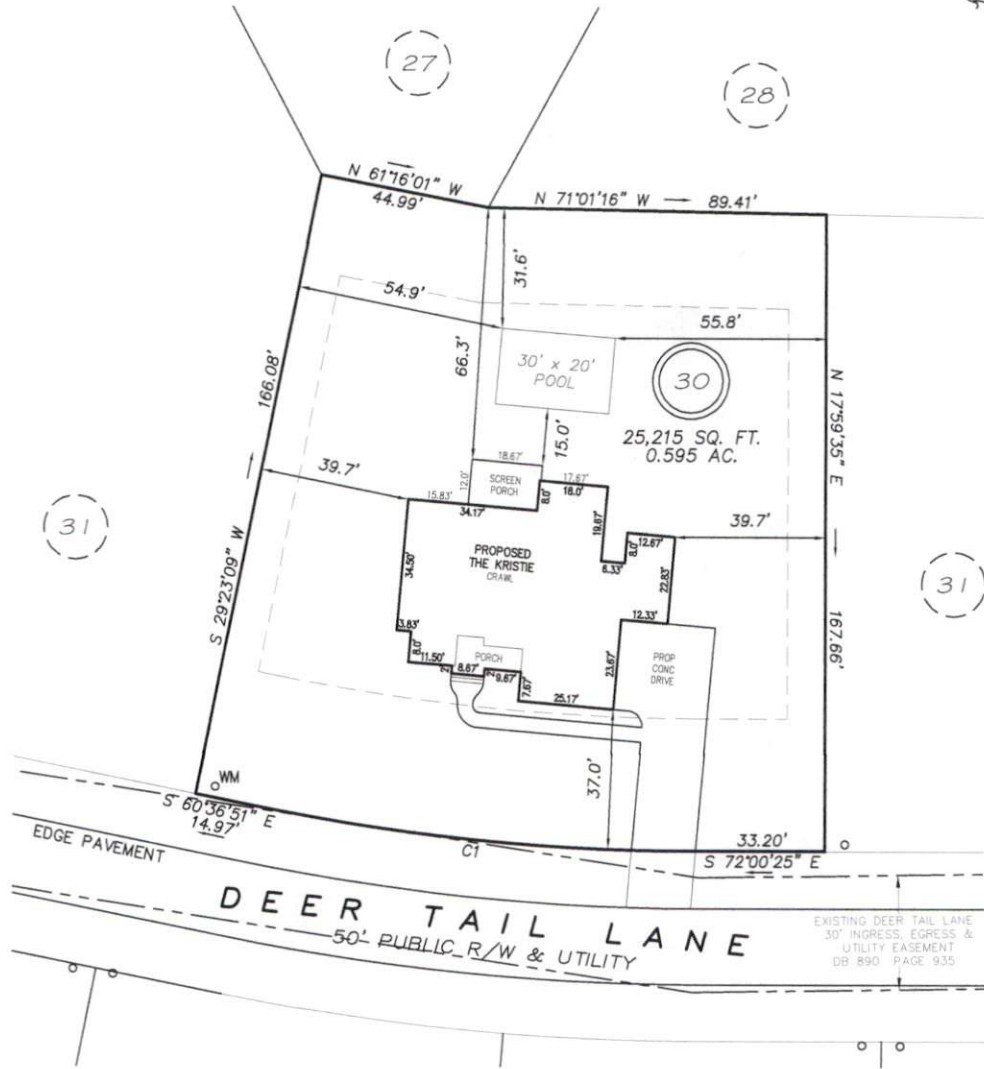
I, MICHAEL P. GRIFFIN, certify that under my direction and supervision this map was drawn from an actual field survey, that the error of closure of the survey as calculated by coordinates is 1: 10,000+; that the area shown hereon was calculated by coordinates.

Witness my hand and seal this day of MONTH 2024.

IMPERVIOUS DATA

HOUSE	3031 SQ. FT.
SCREENED PORCH	221 SQ. FT.
DRIVE & WALKS	1459 SQ. FT.
TOTAL	4711 SQ. FT.
ALLOWED	7000 SQ. FT.

HARNETT CO. REG. 101
 BN 2023 PAGES 700-701



REVISION: ADD POOL 2/8/24
 REVISION: MOVE FORWARD 1/18/24
 C1 R=579.01' L=119.32' N66°18'38"W 119.11'

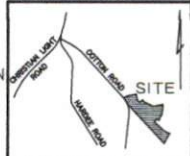
SETBACKS

FRONT	35'
REAR	25'
SIDE	10'
CORNER SIDE	20'

PRELIMINARY
 NOT FOR RECORDATION,
 SALES OR CONVEYANCE

LEGEND

EIP	EXISTING IRON PIPE	FES	FLARED END SECTION
IPS	IRON PIPE SET	WM	WATER METER
R/W	RIGHT OF WAY	CO	CLEAN OUT
N/F	NOW OR FORMERLY	FH	FIRE HYDRANT
EIS	EXISTING IRON STAKE	CB	CATCH BASIN



GLS GRIFFIN LAND SURVEYING, INC.
 P. O. BOX 148
 FUQUAY-VARINA, NC 27526
 (919) 567-1963

PLOT PLAN
 FOR
NCT SPECIALTY CONTRACTING, INC.
 COTTON FARMS
 LOT 30
 COTTON FIELD LANE
 FUQUAY VARINA, N.C.
 HARNETT COUNTY HECTOR'S CREEK TOWNSHIP

DRAWN BY KDF	DATE 1/17/24
CHECKED BY MPG	SCALE 1" = 40'