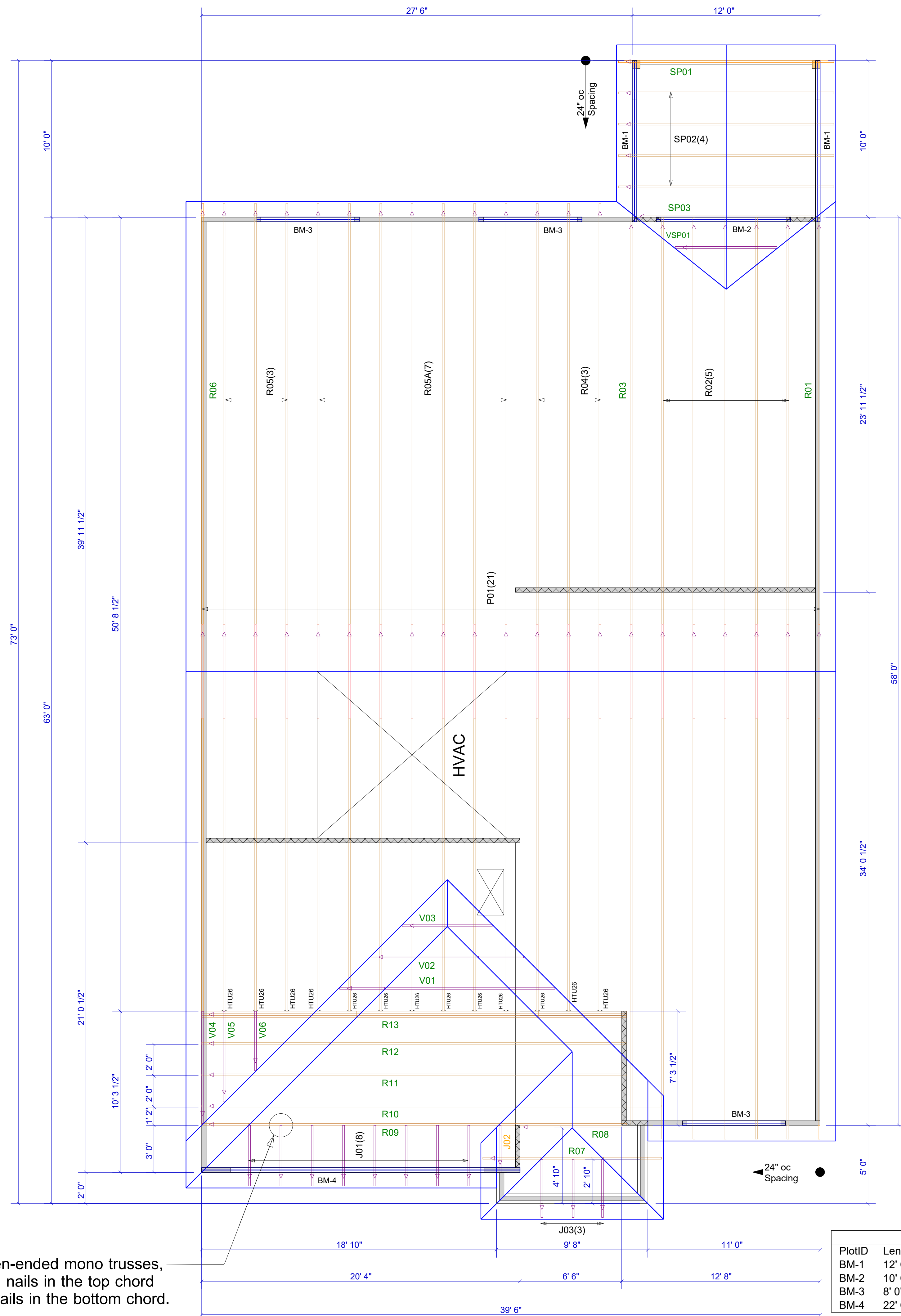


For all small open-ended mono trusses, use (3) 10d toe nails in the top chord and (3) 10d toe nails in the bottom chord.



Extreme care must be taken to not set any of these trusses backwards.

The J03, R07, and R08 trusses bear at a 10-6-8 plate height. All other trusses bear at a 9-1-8 plate height, unless otherwise indicated.

Truss Connector Total List		
Manuf	Product	Qty
Simpson	HTU26	13

Products				
PlotID	Length	Product	Plies	Net Qty
BM-1	12' 0"	1-3/4" x 9-1/2" VERSA-LAM® 2.0 3100 SP	2	4
BM-2	10' 0"	1-3/4" x 9-1/2" VERSA-LAM® 2.0 3100 SP	2	2
BM-3	8' 0"	1-3/4" x 9-1/2" VERSA-LAM® 2.0 3100 SP	2	6
BM-4	22' 0"	1-3/4" x 11-7/8" VERSA-LAM® 2.0 3100 SP	2	2

**WARNING!** Long span trusses, 60' or greater in length, require extreme care and experience for proper and safe handling and installation. For general handling and installation guidance, see the "Guide to Good Practice for Handling, Installing, Restraining & Bracing of Metal Plate Connected Wood Trusses ("BCSI"), JOINTLY PRODUCED BY SBCA and TPI. For project specific guidance, consult with a registered design professional. ATLANTIC assumes no responsibility for the handling, installation or bracing of trusses.

▲ = LEFT END OF TRUSS

**FOR PERMIT**

Client: **MATTAMY HOMES-RALEIGH**

Job: **LOT 36 PROVIDENCE CREEK**

Plan Information: **CASCADES-FC**

NOT TO SCALE

Drawn By: **MBB**

Date: 02/09/24

Job #: **24-1269-R01**

Sales Rep: **KYLE GIBSON**

Phone: **864-304-3282**

REVISIONS:



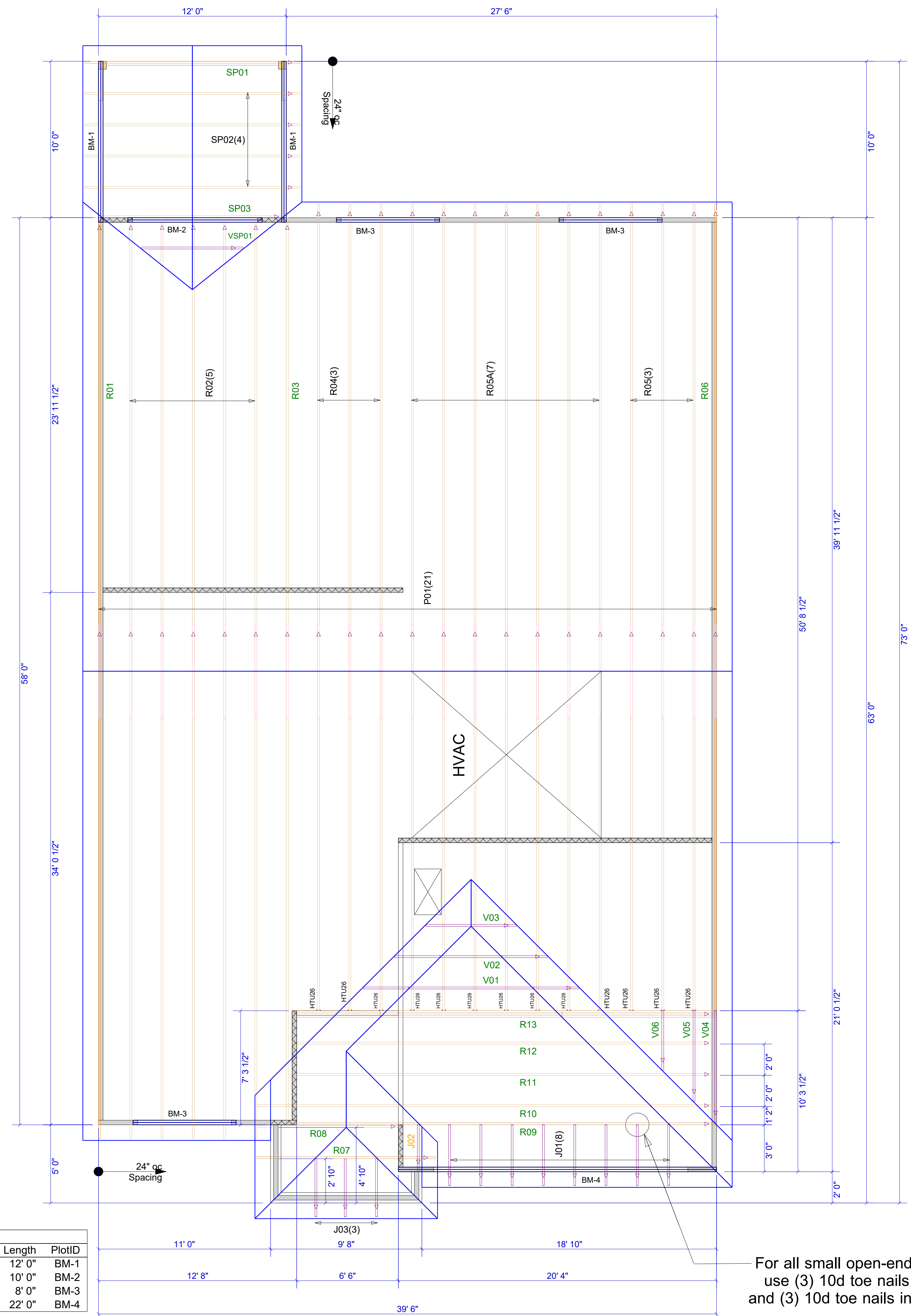
Moncks Corner/Easley, SC (800) 475-3999  
Sparta, NC (336) 372-2226

ROOF

Extreme care must be taken to not set any of these trusses backwards.

The J03, R07, and R08 trusses bear at a 10-6-8 plate height. All other trusses bear at a 9-1-8 plate height, unless otherwise indicated.

Truss Connector Total List					
Qty	Product	Manuf			
13	HTU26	Simpson			
Products					
Net Qty	Plies	Product	Length	PlotID	
4	2	1-3/4" x 9-1/2" VERSA-LAM® 2.0 3100 SP	12' 0"	BM-1	
2	2	1-3/4" x 9-1/2" VERSA-LAM® 2.0 3100 SP	10' 0"	BM-2	
6	2	1-3/4" x 9-1/2" VERSA-LAM® 2.0 3100 SP	8' 0"	BM-3	
2	2	1-3/4" x 11-7/8" VERSA-LAM® 2.0 3100 SP	22' 0"	BM-4	



▲ = LEFT END OF TRUSS

REVISIONS:



Moncks Corner/Easley, SC (800) 475-3999  
Sparta, NC (336) 372-2226

FOR PERMIT

Client: **MATTAMY HOMES-RALEIGH**  
Job: **LOT 36 PROVIDENCE CREEK**  
Plan Information: **CASCADES-FC**

NOT TO SCALE  
Drawn By: **MBB**  
Date: 02/09/24  
Job #: **24-1269-R01**  
Sales Rep: **KYLE GIBSON**  
Phone: **864-304-3282**

ROOF