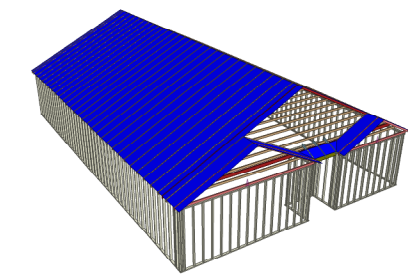


NOTE: LEFT END OF TRUSS AS SHOWN ON TRUSS DETAIL DRQWINGS ARE INDICATED ON LAYOUT BY TRIANGLE ICONS

- General Notes:**
- Per ANSI/TPI 1-2002 all " Truss to Wall" connections are the responsibility of the Building Designer, not the Truss Manufacturer.
 - Dimensions are Feet-Inches- Sixteenths.
 - Trusses are to be 24" o.c. unless noted otherwise (U.N.O.)
 - Trusses are not designed to support brick U.N.O.
 - Do not cut or modify trusses without first contacting Builders FirstSource.
 - Immediately contact Builders FirstSource if trusses are damaged.
- Connection Notes:**
- All hangers are to be Simpson or equivalent U.N.O.
 - Use Manufacturer's specifications for all hanger connections U.N.O.
 - Use 10d x 1/2" Nails in hanger connections to single ply roof girder trusses.
- Floor Notes:**
- Shift truss as required to avoid plumbing traps.
 - Installation Contractor and/or Field Supervisor are to verify all dimensions, trap locations, and options prior to installation
- Dimension Notes:**
- Drawing not to scale. Do not scale dimensions



Hanger List		All Tie Downs H2.5A unless noted	
3	LUS24	U	LE
Special Items List			
Misc Material			
DR Horton			
Cali	Elev:	N	
MCKAY PLACE			
HARNETT	NC	Lot:	37
Appwright #			

GARAGE LEFT		Code:	IRC 2015
		Loading:	
		T.C.L.L.	20
		T.C.D.L.	10
Designed By:	AS	B.C.L.L.	0
Layout:	CNC	B.C.D.L.	10
L/O Date:	02/18/2024		
Revision History		Wind:	
Rev1:	xx/xx/xx	M.P.H.	120
Rev2:	xx/xx/xx	Exposure Category	
Rev3:	xx/xx/xx	B (Wooded areas/other)	
Pick Ticket:	---	Job No:	---
Sales No:	---	Acct No:	---
Hatch Legend			
	Attic Room		
	Volume Ceiling		
	Stick Framing		