

ENGINEERED WOOD MATERIAL LIST

DR HORTON
HAYDEN
2ND FLOOR I-JOIST PLACEMENT PLAN

BASE - ALL ELEVATIONS

MARK	QTY	CUT LENGTH	DESCRIPTION (Notes)
2	2	2'-0"	2" x 14" BCI 5000
3	2	3'-0"	2" x 14" BCI 5000
16a	8	16'-0"	2" x 14" BCI 5000 < 2 >
20a	20	20'-0"	2" x 14" BCI 5000 < 2 >
21	6	21'-0"	2" x 14" BCI 5000
39a	11	39'-0"	2" x 14" BCI 5000 < 2 > [Total 1049']

BEAMS AND HEADERS

LVL1	4	20'-0"	1 3/4" x 14" LVL 2.0E (Flush)
------	---	--------	-------------------------------

ACCESSORIES & OTHER MATERIALS (Simpson Hangers)

ITEM	QTY	UNIT	DESCRIPTION
14" Rim	177	LF	1 1/2" x 14" Rim 15 pcs@12" or 12 pcs@16"
BP	6	1'-5 1/8"	14" Blocking Panel [Total 12']
H4c	3	PCS	M1U4.28/14 Double Face Mint Hanger
H3c	12	PCS	IUS2.06/14 Single Face Mint Hanger
10CUT14C	78	HOLE	10" Circular Cutout
BCLAYOUT	1	PCS	BCI Placement Layout
BGGUIDE	1	PCS	BCI Installation Guide

SEE MATERIAL LIST FOR DEPTH, SERIES & LENGTH

INDICATED I-JOIST
INDICATED FIBERGLASS W/FR. LIN.
INDICATED FIBERGLASS LIN.
INDICATED PARALLEL PCL
INDICATED BULKHEAD

INDICATES A SECTION FROM THE INSTALLATION GUIDE DETAIL IS ALSO SHOWN ON THIS SHEET

LOAD BEARING WALL ABOVE
BEAM BY CHAINS
EXTRA JOIST ADDED
EXTRA JOIST (1) UNDER WALL
DOUBLE JOIST (2)
TYPICAL JOIST (2)
JOIST BRACKET PANEL
1 JOIST OR 1 JOIST WITH BOARD
CONCENTRATED POINT LOAD FROM ABOVE
DEEP BEAM
FLUSH BEAM

THIS SHOP DRAWING IS BASED ON THE FOLLOWING

PROJECT LOCATION	PROJECT NUMBER	ARCHITECT DNGS BY	ARCHITECT REVISION	CHECKED BY	DATE

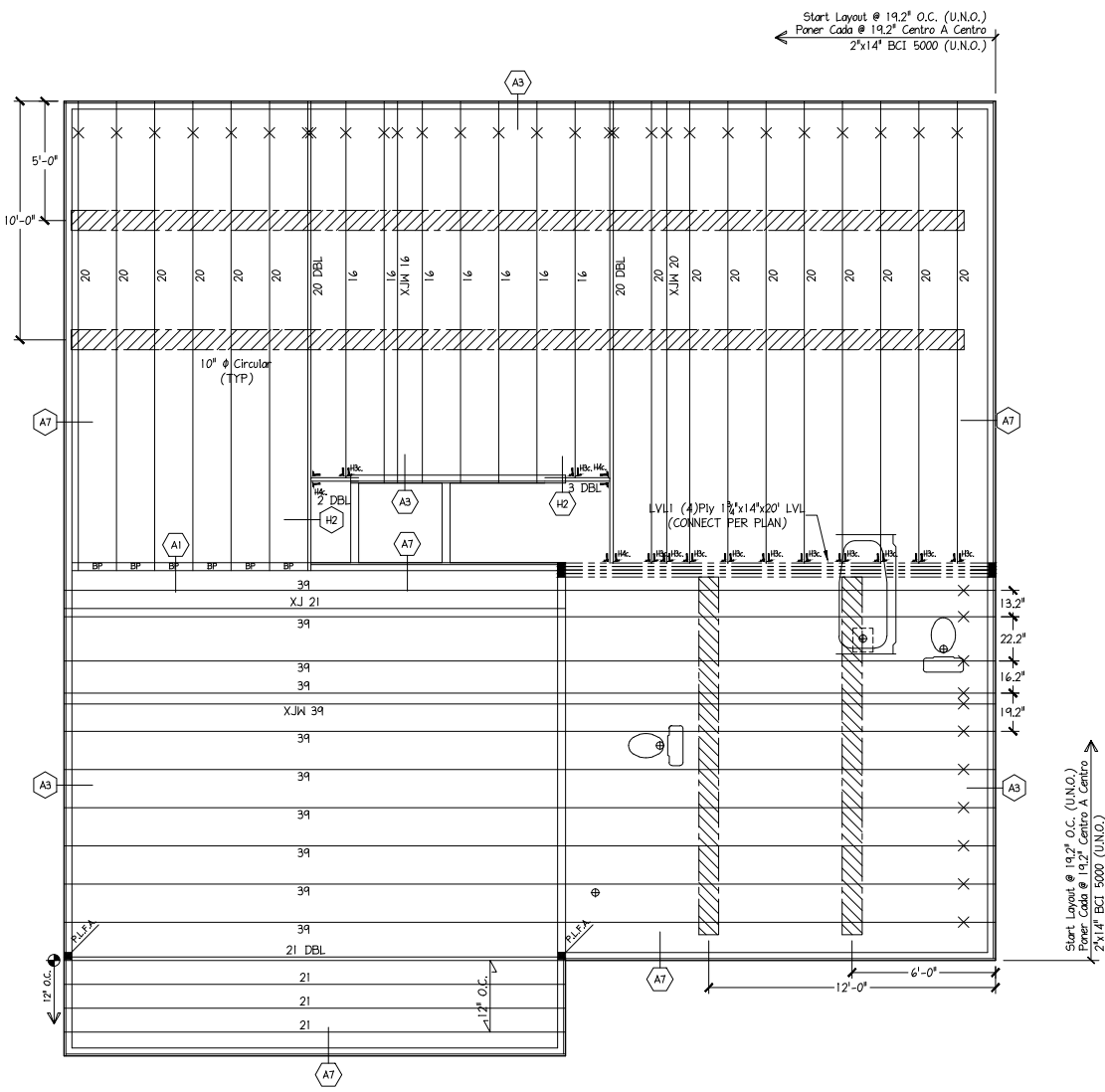
DESIGN DATA

LIVE	40 PSF
DEAD	10 PSF
TOTAL LOAD	= 50 PSF
STRESS DURATION	= 100%
DEFLECTION CRITERIA	= (L/480)

Builder's FirstSource

1-800-391-3333

www.buildersfirstsource.com



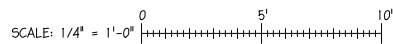
2ND FLOOR I-JOIST PLACEMENT PLAN
DR HORTON - HAYDEN

I-Joists

12BC14500 = 12TJI110
12BC15000 = 12TJI210
14BC14500 = 14TJI110
14BC15000 = 14TJI210
14BC16000 = 14TJI230
16BC15000 = 16TJI210
16BC16000 = 16TJI360

POINT LOAD FROM ABOVE (P.L.F.A.)

USE SOLID BLOCKING TO TRANSFER LOAD FROM ABOVE TO FOUNDATION



DR HORTON
HAYDEN
2ND FLOOR I-JOIST PLACEMENT PLAN
DATE: TUESDAY, 18 OCTOBER 2022 - 12:57 AM
FILE: I:\APEX\11\ACADDWG\DR_HORTON\HAYDEN.DWG

DR HORTON
HAYDEN
2ND FLOOR I-JOIST PLACEMENT PLAN
DATE: TUESDAY, 18 OCTOBER 2022 - 12:57 AM
FILE: I:\APEX\11\ACADDWG\DR_HORTON\HAYDEN.DWG

DRAWN BY: NJH DATE: 9/16/21

SHEET: 2 OF 2 SHEETS