

THIS LAYOUT IS INTENDED FOR THE PURPOSE OF TRUSS LOCATION AND PLACEMENT ONLY. REFER TO THE BUILDING PLANS FOR ACTUAL BUILDING CONSTRUCTION.



DEDICATED TO QUALITY AND EXCELLENCE
200 EMMETT ROAD
DUNN, NORTH CAROLINA 28334
PHONE: 910-892-8400

PROJECT: **LOT 164 BIRCHWOOD GROVE**

CUSTOMER: **KB HOME**

MODEL: **150-1773 - ELEVATION C - 10X10 COVERED PATIO - GR**

QUOTE #: **07382** PRINT DATE: **12/20/2023** DRAWN BY: **Mike Bolt** SCALE: **N.T.S**

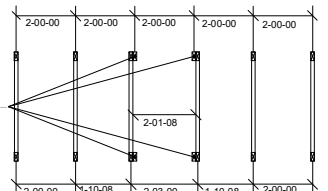
TOP LIVE LOAD: 20
TOP DEAD LOAD: 10
BOTTOM DEAD LOAD: 10
WIND SPEED: 130

GENERAL NOTES:
DO NOT CUT OR MODIFY TRUSSES
TRUSSES ARE SPACED 24" ON CENTER UNLESS OTHERWISE NOTED
REFER TO THE INDIVIDUAL TRUSS DESIGN DRAWINGS FOR THE LOCATION OF LATERAL BRACING AND MULTI-PLY CONNECTION REQUIREMENTS.
PER ANSITP 1-2002 THE TRUSS ENGINEER IS RESPONSIBLE FOR TRUSS TO TRUSS CONNECTIONS AND TRUSS PLY TO PLY CONNECTIONS. THIS TRUSS PLAN RECOMMENDS TRUSS TO BEARING CONNECTIONS AND TRUSS TO BEAM CONNECTIONS WHICH SHALL BE REVIEWED BY THE BUILDING DESIGNER. IT IS THE RESPONSIBILITY OF THE BUILDING DESIGNER TO RESOLVE ALL ROOF FORCES ADEQUATELY TO THE FOUNDATION.

Qty	Product	Manuf
1	HHUS26-2	Simpson
10	HUS26	Simpson
38	LUS24	Simpson

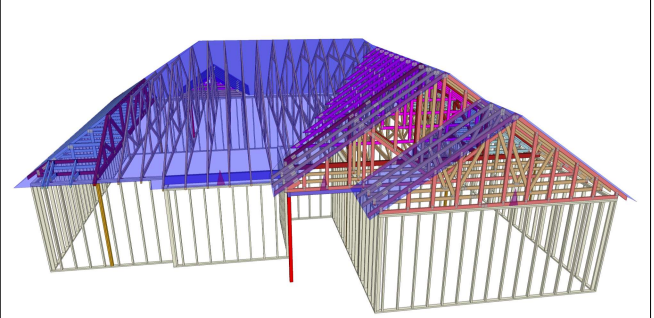
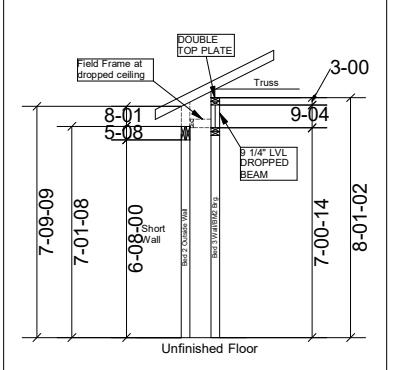
THE PURPOSE OF THIS DETAIL IS TO ILLUSTRATE HOW TO PROPERLY SPACE 24" O.C. ROOF TRUSSES TO ALLOW FOR A 25 1/2" OPENING FOR PULL DOWN ATTIC ACCESS

TRUSSES TO BE DESIGNED AT 24" ON CENTER



TRUSS LAYOUT DIMENSIONS AT PULL DOWN ATTIC ACCESS

DETAIL 1



1st Level Roof Area	2nd Level Roof Area
0	0

