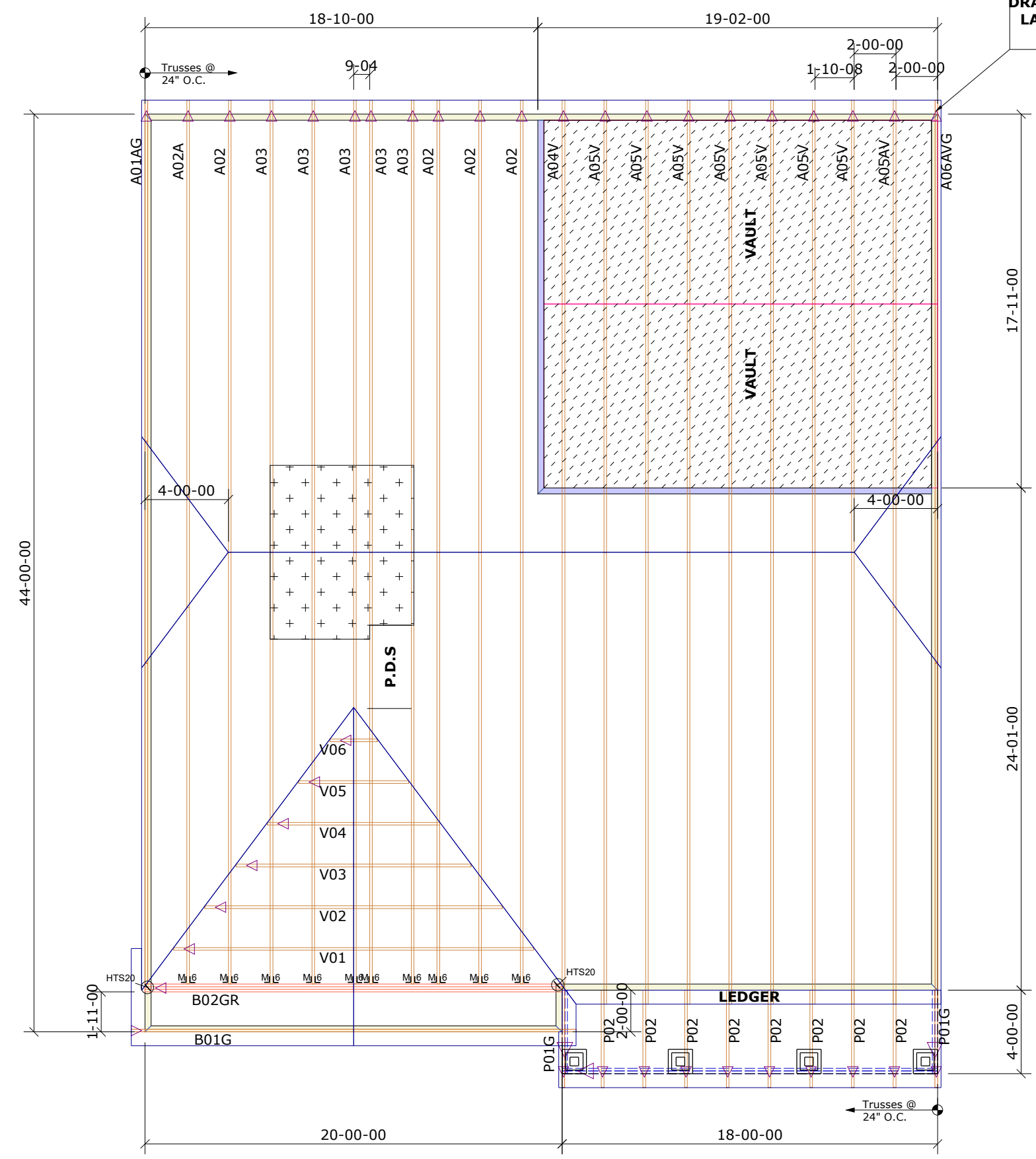


NOTE: LEFT END OF TRUSS AS SHOWN ON TRUSS DETAIL DRAWINGS ARE INDICATED ON LAYOUT BY TRIANGLE ICONS



General Notes:
 - Per ANSI/TPI 1-2002 all "Truss to Wall" connections are the responsibility of the Building Designer, not the Truss Manufacturer.
 - Dimensions are Feet-Inches- Sixteenths.
 - Trusses are to be 24" o.c. unless noted otherwise (U.N.O.)
 - Trusses are not designed to support brick U.N.O.
 - Do not cut or modify trusses without first contacting Builders FirstSource.
 - Immediately contact Builders FirstSource if trusses are damaged.

Connection Notes:
 - All hangers are to be Simpson or equivalent U.N.O.
 - Use Manufacturer's specifications for all hanger connections U.N.O.
 - Use 10d x 1 1/2" Nails in hanger connections to single ply roof girder trusses.

Floor Notes:
 - Shift truss as required to avoid plumbing traps.
 - Installation Contractor and/or Field Supervisor are to verify all dimensions, trap locations, and options prior to installation

Dimension Notes:
 - Drawing not to scale. Do not scale dimensions

Hanger List		All Tie Downs H2.5A Unless noted	
10	HTU26	M/Ls	Special Items List
2	HTS20		

Misc Material	

DR HORTON			
WILMINGTON	Elev:	A	
MCKAY PLACE			
HARNETT CO	NC	Lot:	24
OWNER'S VAULT			
Appwright #		---	
Code:		IRC 2015	
Loading:			
T.C.L.L.		20.0 lb/ft2	
T.C.D.L		10.0 lb/ft2	
B.C.L.L.		0.0 lb/ft2	
B.C.D.L.		10.0 lb/ft2	
Designed By:		MWA	
Layout:		WILMINGTON	
L/O Date:		02/07/2024	

Revision History		Wind:	
Rev1:	xx/xx/xx	M.P.H.	120
Rev2:	xx/xx/xx	Exposure Category	
Rev3:	xx/xx/xx	B	
Pick Ticket:		---	
Sales No:		---	
Job No:		---	
Acct No:		---	

Hatch Legend	
	Attic Room
	Volume Ceiling
	Stick Framing