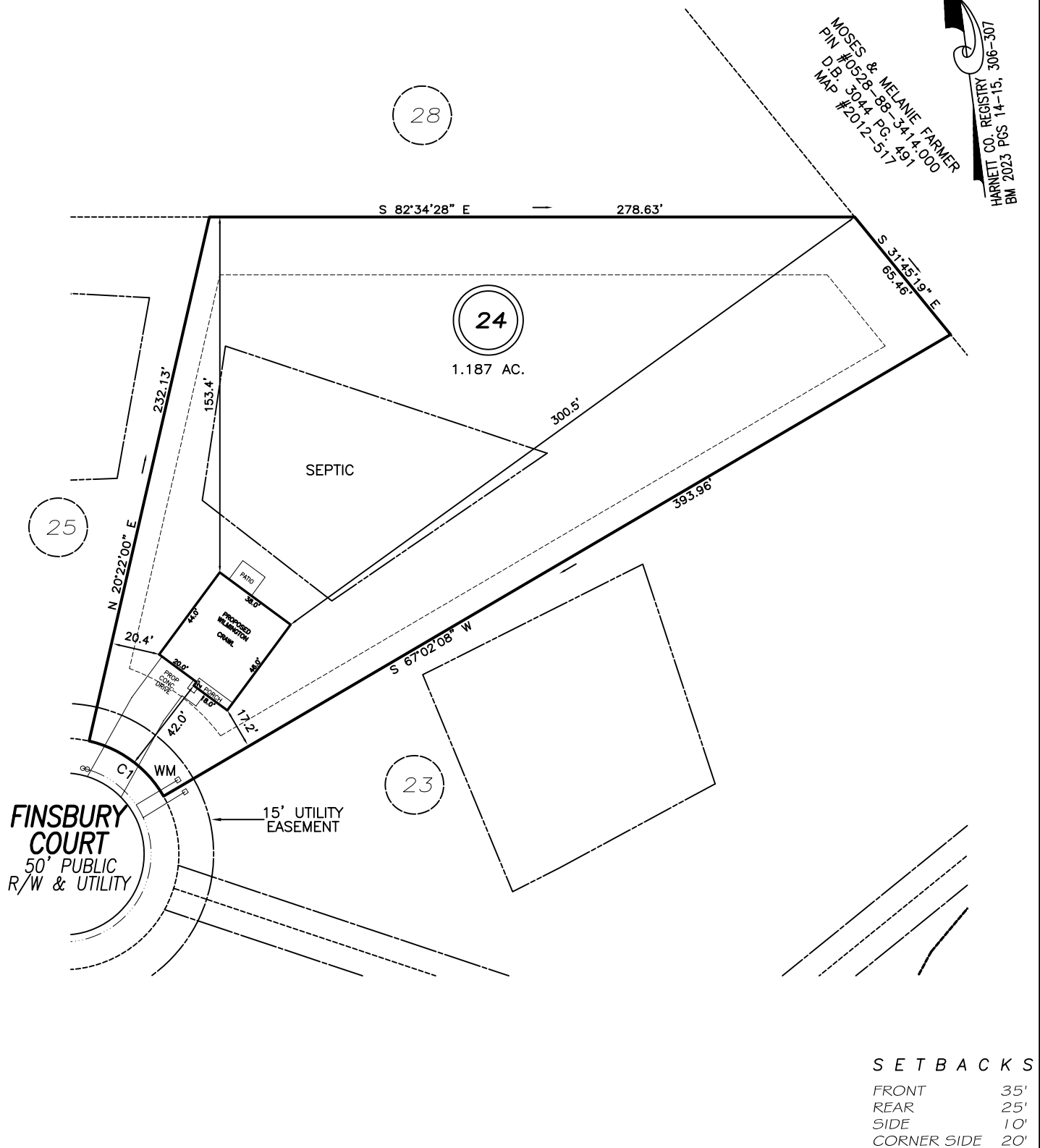


I, MICHAEL P. GRIFFIN, certify that under my direction and supervision this map was drawn from an actual field survey; that the error of closure of the survey as calculated by coordinates is 1: 10,000+; that the area shown hereon was calculated by coordinates.

Witness my hand and seal this day of MONTH 2023.

MOSES & MELANIE FARMER
 PIN #0528-88-3414.000
 D.B. 3044 PG. 491
 MAP #2012-517
 HARNETT CO. REGISTRY
 BM 2023 PGS 14-15, 306-307



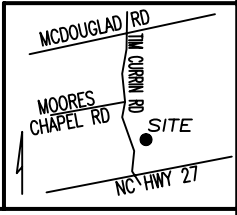
SETBACKS

FRONT	35'
REAR	25'
SIDE	10'
CORNER SIDE	20'

REVISION: MOVE BACK 1/11/24
 C1 R=50.00' L=41.15' N46°03'19"W 40.00'

LEGEND

EIP	EXISTING IRON PIPE	FES	FLARED END SECTION
IPS	IRON PIPE SET	WM	WATER METER
R/W	RIGHT OF WAY	CO	CLEAN OUT
N/F	NOW OR FORMERLY	FH	FIRE HYDRANT
EIS	EXISTING IRON STAKE	CB	CATCH BASIN



PRELIMINARY
 NOT FOR RECORDATION,
 SALES OR CONVEYANCE

GLS GRIFFIN LAND SURVEYING, INC.
 P.O. BOX 148
 FUQUAY-VARINA, NC 27526
 (919) - 567 - 1963

DRAWN BY KDF	DATE 9/29/23
CHECKED BY MPG	SCALE 1" = 60'

PLOT PLAN
 FOR
D.R. HORTON
 MCKAY PLACE
 LOT 24
 FINSBURY COURT
 LILLINGTON, N.C.
 HARNETT COUNTY UPPER LITTLE RIVER TOWNSHIP